

U.S. PUBLIC LAND SURVEY MONUMENT RECORD

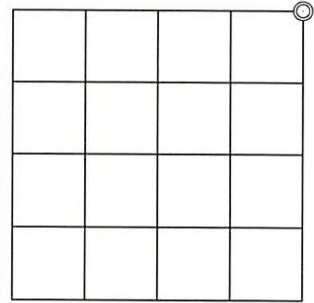
Oneida County
Land Information Office
Filed
1/23/2024

Note: This form is intended and designed to fulfill all requirements of the Wisconsin Administrative Code, Chapter A-E 7.08 U.S. Public Land Monument Record (3)(a)(b)(c)(d)(e)(f)(g)(h)(i). An additional sheet may be added if necessary to conform with said requirements.

(a) CORNER LOCATION: WISCRS - Oneida County
 Northeast corner of Section 2 North: 197,703.35 USft
 Township 37 North East: 318861.28 USft
 Range 10 East Datum: NAD 83(2011) ep. 2010.00
 Town of Stella GNSS Method: RTN - Direct
 County of Oneida GNSS Control: WISCORS VRS

(RECORDING AREA)

SECTION 2



(b) HISTORY OF ORIGINAL CORNER ESTABLISHMENT

Original Surveyor: Hiram C. Fellows, Deputy Surveyor
 Date of Survey: July 1859
 Original B.T.'S Birch 12" N67°W, 28 lks
 Birch 25" N54°E, 33 lks
 Sugar 8" S80°E, 12 lks
 Sugar 12" S83°W, 9 lks

(f)(g)(h) DESCRIPTION OF MONUMENT FOUND AT THIS CORNER AND IF IT WAS ACCEPTED, STATE ALL EVIDENCE (MATERIAL, TESTIMONIAL, OCCUPATIONAL, PLATS, RECORD, OTHER MONUMENTS) USED AS A BASIS FOR ESTABLISHING LOCATION. IF NOT ACCEPTED OR IF NOTHING WAS FOUND, STATE EVIDENCE USED AS BASIS FOR ESTABLISHING LOCATION. IF REESTABLISHED THROUGH LOST CORNER PROPORTIONATE METHODS, INDICATE ALL MONUMENTS, DISTANCES AND DIRECTIONS USED TO ESTABLISH. INDICATE TYPE OF MONUMENT AND SIGN POST FOUND OR SET.

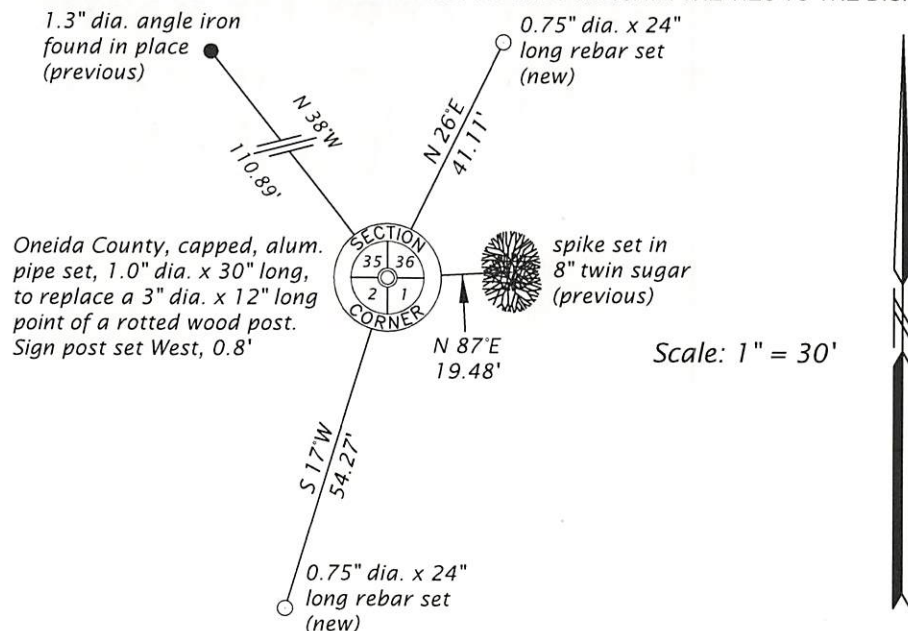
December 13 thru 16, 1909 - D. H. Vaughan, County Surveyor, Old Field Book 6, pages 116 and 117, and Dorr-Vaughan Book, page 322. Went to the nw corner Section 1, found the 2 Birch B.T.s, east one a stub. Set post and made new bearing; Hemlock 12" S64 1/2°E, 38 links (25.08), no other trees.

October 12, 1936 - Ray H. Hall, CCC Camp 75-S Minocqua, CCC Book 6, page 44 Identified by old post agreeing with orig. NW brng. still standing, by D.H.V. Hemlock (1909) down. On north slope. Set new 5"x5" Cedar post and bts: W. Birch 7" N76°W, .334 ch. (22.04'); W. Birch 8" N3 1/2°E, .463 ch. (30.56'); W. Birch, 5" S33°W, .57 ch. (37.62'); Y. Birch 3" S32°E, .395 ch. (26.07').

November 27, 2023 - James D. Rein, PLS No. 1234, scalping ground 8 inches deep, we recovered 3" dia. x 12" long wood post point, and old orange ribbon with blue paint under duff. At post point we set a 1" dia. x 30" long capped stamped aluminum monument. A birch stump with a distinct seam bears N77°W, 22.4 feet and deep stump hole, possible D.H. Vaughan hemlock bears S61°E, 22.5 feet. This corner position is harmonious with Vaughans measurement 39.73 chains (2622.18) versus ours 2619.30 feet to the quarter corner common to Sections 1 and 2. A 1.3" angle iron, apparently accepted for timber cutting purposes, bears N38°W, 110.89 feet. We set a white sign post 0.8 feet west of the corner and made additional reference ties as shown in plan.

The coordinate value shown has been verified by the average of two or more GPS observations at a markedly different time satisfying the accuracy requirements defined and qualified in the 2022 Oneida County Fee Schedule for USPLS Corners.

(c)(d)(e) PLAN VIEW OF CORNER WITH TIES TO AT LEAST 4 WITNESS MONUMENTS. IF IN DISAGREEMENT WITH PREVIOUSLY ESTABLISHED CORNER, SHOW THE DISTANCE BETWEEN THE TWO CORNERS AND ALSO INDICATE THE TIES TO THE DISPUTED CORNER.



See reverse side
for photos

(i) I, JAMES D. REIN, PROFESSIONAL LAND SURVEYOR NO. S-1234 HEREBY CERTIFY THAT THE CORNER LOCATION ON THIS RECORD WAS DETERMINED BY ME OR UNDER MY DIRECTION AND CONTROL AND THAT THIS U.S. PUBLIC LAND SURVEY MONUMENT RECORD IS CORRECT AND COMPLETE TO THE BEST OF MY KNOWLEDGE AND BELIEF.



James D. Rein
 SIGNATURE
 12-27-23
 DATE

INDEX NO. A - 21
 3810350000

REVERSE SIDE

U.S. PUBLIC LAND SURVEY MONUMENT RECORD

Note: This form is intended and designed to fulfill all requirements of the Wisconsin Administrative Code, Chapter A-E 7.08 U.S. Public Land Monument Record (3)(a)(b)(c)(d)(e)(f)(g)(h)(i). An additional sheet may be added if necessary to conform with said requirements.

Photo of Ray H. Hall BT



birch tree stump

Photo of Site



new monument in found hole

Photo of Site



rotted wood post point & new monument