

U.S. PUBLIC LAND SURVEY MONUMENT RECORD

Index No. J - 3

State of Wisconsin }
County of Oneida } ss.

I, Kip W. Soder, do hereby certify that on the 24th day of April 19 90, I found evidence of the South One-Quarter corner of Section 7 Township 38 North, Range 11 East, Fourth Principal Meridian, as described hereon; and that from this evidence I established a new monument and accessories as described hereon to perpetuate the original location of this corner.

Resident witnesses:

Kip W. Soder
Robert Schneider

History of original corner establishment:

Corner was established by William E. Daugherty in 1859.
Made the following B.T.'s; 8" Birch N 50° W 17 lks. 12" Hemlock S 10° E 8 lks.

Description of corner evidence found:

Found 1" I.P. from which the following bear; 8" N. Pine N 88° W 8.78 feet 12" N. Pine S 40° E 1.97 feet

Description of monument and accessories I established to perpetuate the original location of this corner.

Set a 2 1/2" x 3/8" Aluminum Oneida County monument stamped to identify corner.

Made the following reference monuments; Power pole #38 11 18 WI. N 38° W 22.71 feet 6" x 6" concrete monument with brass cap U.S. Coast & Geodetic Elev. monument & State Survey Station #1020 N 8° W 88.35 feet

Set plastic Survey marker Northwest 1.0 feet

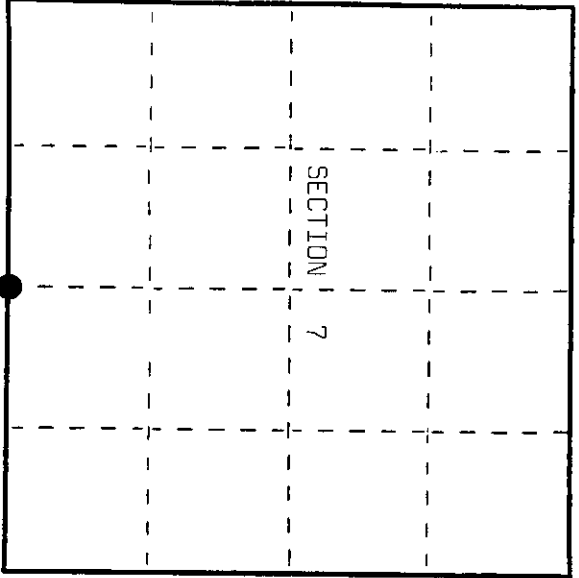
Dated at Three Lakes, Wis., this 26th day of April, 19 90

Signature: *Kip W. Soder* Title: Land Surveyor
(County Surveyor, Registered Land Surveyor, or other duly authorized official) Registration No. S-1731

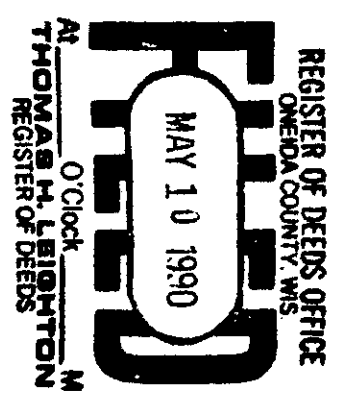
Office of Register of Deeds, County of Oneida, Wisconsin, I hereby certify that the within instrument was filed in this office for record on the _____ day of _____, 19 _____ at _____ o'clock _____ M.

(Register of Deeds)

By _____ Deputy



● = Corner monument restored.



3811070020

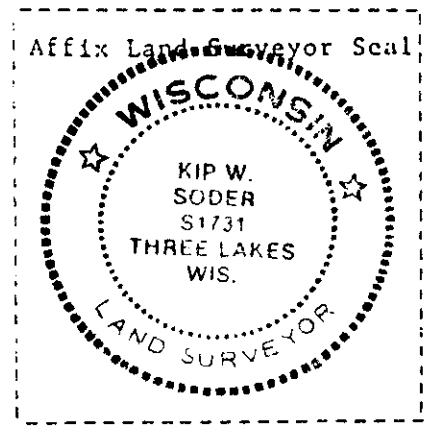
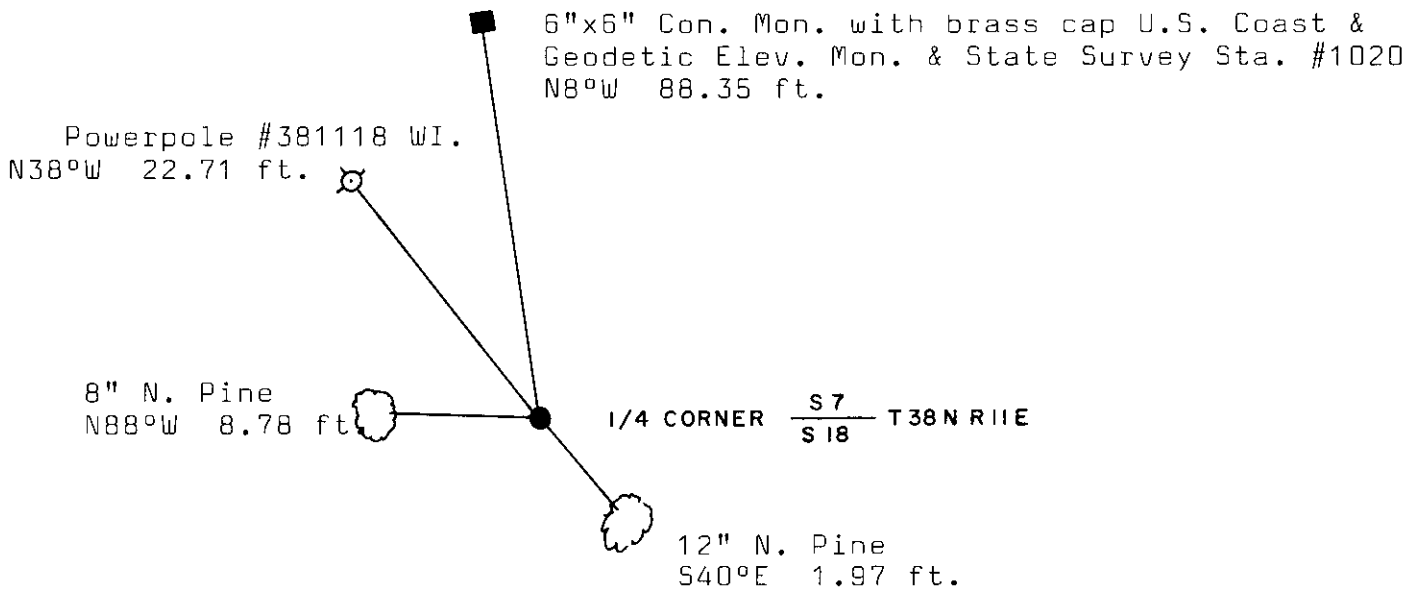
e) Describe any material discrepancy between the location of the corner as restored or reestablished and the location of that corner as previously restored or reestablished by distance and direction. Show the discrepancy on the plan view drawing under (d), above. Show the distances between the corner as previously restored or reestablished and (1) the corner as restored or reestablished, and (2) to at least 2 of the witness monuments shown on the drawing in (d), above.

None

(f) Was the corner restored through acceptance of (1) an obliterated evidence location, or, (2) a found perpetuated location?

Corner was restored through a found perpetuated location.

(g&h) Was the corner reestablished through lost corner proportionate methods? If so, show the method, including the directions and distances to other public land survey corners used as evidence or used for proportioning in determining the corner location?



(i) I, Kip W. Soder R.L.S. #1731
(type or print name) certify that the corner location shown on this record was determined by me or under my direction and control and that this U.S. Public Land Survey Monument Record is correct and complete to the best of my knowledge and belief

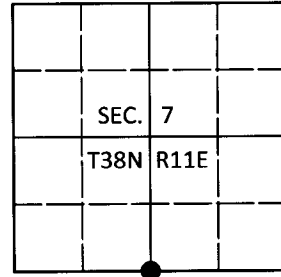
Kip W. Soder April 26, 1990
Signature Date

U.S. PUBLIC LAND SURVEY MONUMENT RECORD

Note: This form is intended and designed to fulfill all requirements of Wisconsin Administrative Code, Chapter A-E 7.08 U.S. Public Land Survey Monument Record (3)(a-i).

(a) CORNER LOCATION
 1/4 Cor. of Secs. 7 & 18
 Township 38 North
 Range 11 East of the 4th P.M.
 Town of Three Lakes
 County of Oneida

WISCRS - Oneida County
 N: 218,135.07 USft
 E: 327,244.40 USft
 Datum: NAD 83(2011)
 GNSS Method: RTN Offset
 GNSS Control: WISCORS VRS



(b) HISTORY OF ORIGINAL CORNER ESTABLISHMENT

Original Surveyor: _____ Original Accessories: _____

Date of Survey Commenced: _____
 Completed: _____

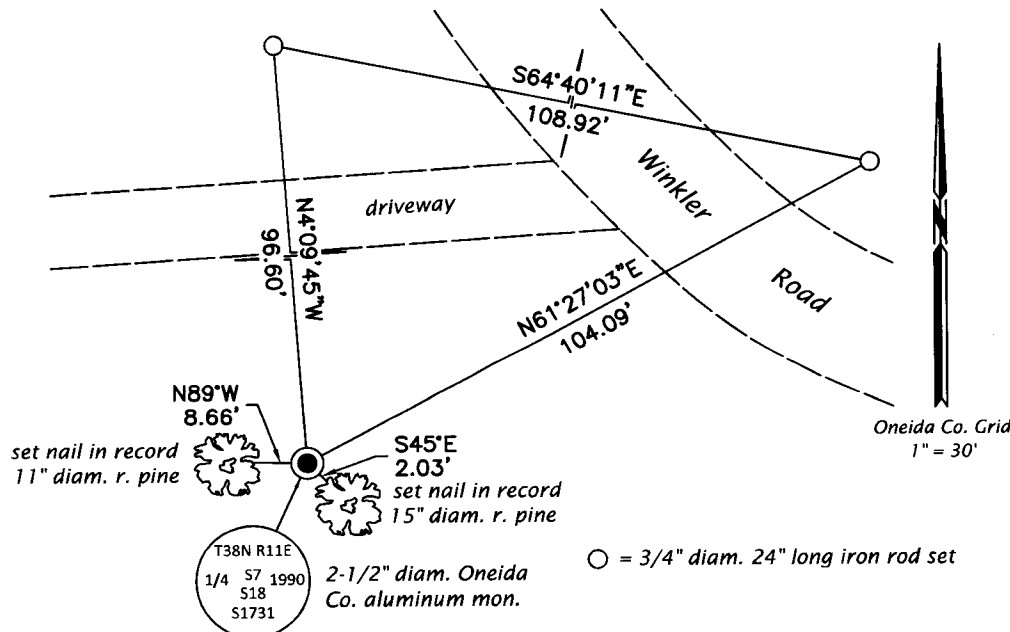
(b)(f)(g)(h) Description of monument found at this corner and if it was accepted, state all evidence (material, testimonial, occupational, plats, records, other monuments) used as a basis for accepting. If not accepted or if nothing was found, state evidence used as basis for establishing location. If re-established through lost corner proportionate methods, indicate all monuments, distances and directions used to establish. Indicate type of monument and sign post found or set.

This is a perpetuation of a previous USPLS Monument Record by Kip W. Soder, RLS dated April 26, 1990 and filed in the office of the Oneida County Register of Deeds. A complete history of the corner can be found on the previous monument record. I accept the previous location as a true and faithful perpetuation or reestablishment of the original corner location and further perpetuate it as follows.

June 22, 2017: Jeff Austin visited the corner and recovered the record monument, a 2-1/2" diam. aluminum pipe with a 3-1/4" diam. Oneida Co. aluminum cap flush with the ground surface. Soder's concrete monument accessory is in place but leaning considerably. Accessories were found or established as shown below. A white vinyl sign post was found Northwest, 0.7 ft.

The coordinate value shown has been verified by at least one of the following methods: 1) comparison to a previously GPS determined published value; 2) the value is the average of two or more GPS observations at a markedly different time; 3) one or more distances were measured back to the GPS observed corner from temporary GPS observed offset locations.

(c)(d)(e) Plan view of corner with ties to at least 4 witness monuments. If in disagreement with previously established corner, show the distances between the two corners and also indicate the ties to the disputed.



REGISTER OF DEEDS OFFICE
 ONEIDA COUNTY
 FILED

JUL 11 2017

AT _____ O'CLOCK _____ M
 KYLE J. FRANSON
 REGISTER OF DEEDS



(i) I, Michael J. Romportl, Professional Land Surveyor No. S-1624, hereby certify that the corner location on this record was determined by me or under my direction and control and that this U.S. Public Land Survey Monument Record is correct and complete to the best of my knowledge and belief.

Michael J Romportl

 Signature

7/11/2017

 Date

3811070020 (INDEX NO. J-3)