

This form is intended to fulfill requirements of Chapter A-E 7.08 (3)(a) thru (i) U.S. Public Land Survey Monument Location Record, Wisconsin Administrative Code. Use reverse side for geodetic location data and/or other continuation purposes.

U.S. PUBLIC LAND SURVEY MONUMENT LOCATION RECORD

Recorders Data

USPLS CORNER: NW Section Corner SECTION: 16 TOWNSHIP: 38 NORTH RANGE: 11 EAST

NAME OF WATERWAY FOR M.C. CORNER: N/A SECTION LINE: N/A

(CITY)(VILLAGE)(TOWN) OF: Three Lakes COUNTY OF: Oneida

Description of monument found or placed and all other evidence used as the basis for monument location; including monuments and related measurements required if the corner location was reestablished by lost corner proportionate methods. Also indicate name of original surveyor, original survey date and the corner monument, bearing trees, witness or other reference monuments established; including measured bearing and distance ties, from available records.

Found and accepted an undisturbed 2" dia. iron pipe with standard stamped BLM brass cap flush with surface of existing blacktop drive to residence at Fire No. 1298. A previously painted 24" wide white aerial photo 'T' panel is centered over the monument on pavement mat.

In September 1859, Daugherty/GLO set a wood post as the original section corner and marked OBTs, a 16" Bw N63°E 16 links and a 10" Sugar S45°W 45 links, all of which are now obliterated.

In 1952/53, Crawford/BLM set a standard 2" dia. by 30" long iron pipe monument with stamped BLM brass cap at the intersection of existing improved roads bearing West and South as the corner location as no original GLO corner evidence found; he also noted that a similar standard monument was set on a right line thru the corner monument center N63°W 50 links, which I found tipped and replumbed it for new ties below, and S63°E 50 links, which I could not find in existing lawn area; he also marked new BTs, a 6" Aspen N84.5° 164 links, now gone, and a 10" Maple S59°E 95 links, which I found OK as a 19" Maple with upper and lower face blazes open and scribing plain; all as per BLM Plat of Resurvey filed as B-1727 and BLM field notes filed as L-367 in Oneida County records..

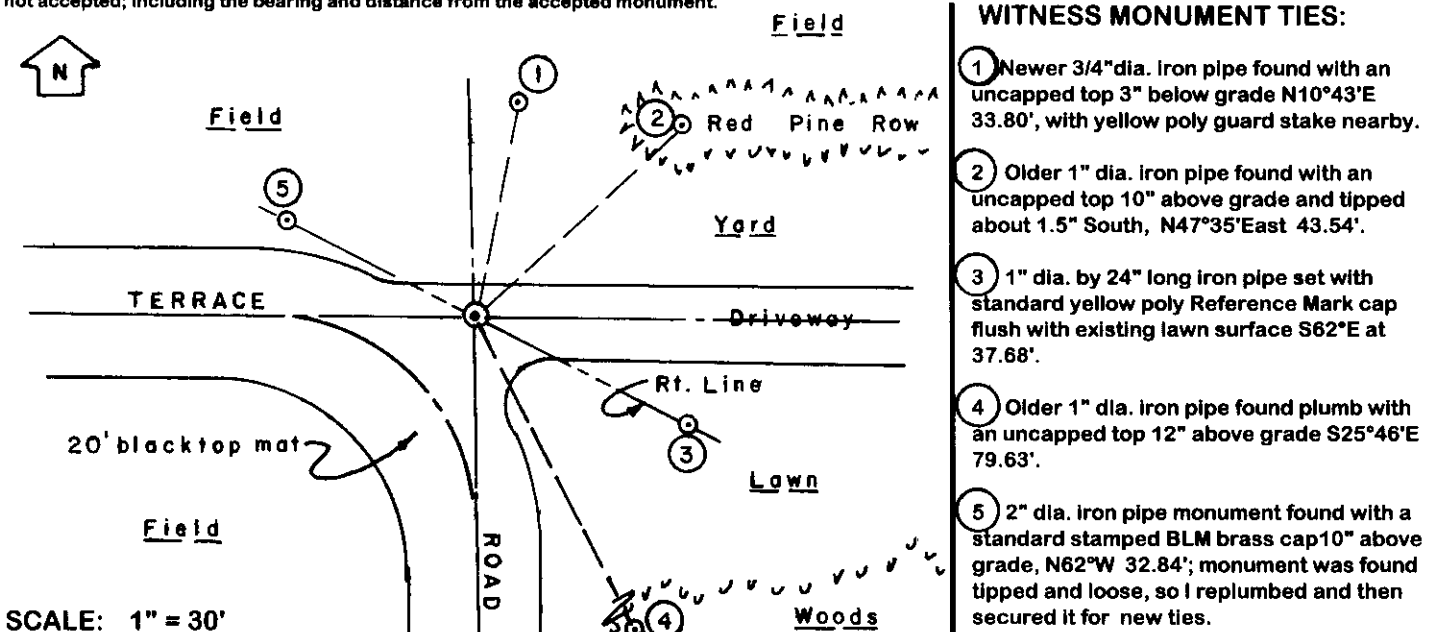
In 1963, R. Bandow found and accepted the foregoing BLM capped monument at the section corner location per Plat of Survey filed as B-1129 and B-1333 in Oneida County records.

In 1990, K. Soder also found and accepted the same monument as section corner location per Plat of Survey filed as B-2270 in Oneida County records.

This recovery completed November 3, 1998; there were no direct witnesses other than vehicle drive-bys.

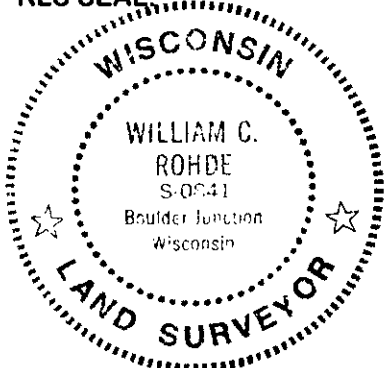
I set and wired a standard white poly 'T' corner marker post along North side of the No. 5 witness monument.

Plan view map of monument location with bearing and distance ties to a minimum of four(4) described witness or reference monuments of concrete, natural stone, iron, live bearing trees or equivalent material. If applicable, also show a minimum of two(2) bearing and distance ties to any other monument found and not accepted; including the bearing and distance from the accepted monument.



Unless otherwise indicated, all bearing tree ties are to a .25" dia. by 2.5" long PK nail with a 1.25" dia. steel washer driven into unblazed right face and a .25" dia. by 2.5" long PK nail is also driven into unblazed face of bearing tree at DBH; the basis for measured bearings is by magnetic compass to nearest degree and all tie distances are measured horizontal by steel tape corrected to nearest 1/100th feet at standard temperature of 68 degrees Fahrenheit.

RLS SEAL:



LAND SURVEYOR CERTIFICATE:

I, William C. Rohde, hereby certify that I am duly licensed as a Professional Land Surveyor in the State of Wisconsin; that this USPLS monument location was determined by me and/or under my direct supervision and control; and that this U.S. Public Land Survey Monument Location Record is true and correct to the best of my knowledge and belief.

Signed: *William C. Rohde*
William C. Rohde RLS 841

