

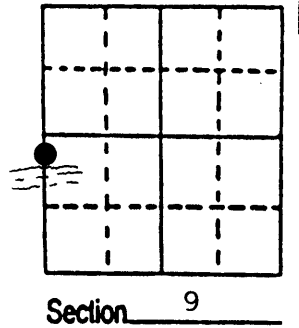
U.S. PUBLIC LAND SURVEY MONUMENT RECORD

Note: This form is intended and designed to fulfill all requirements of Wisconsin Administrative Code, Chapter A-E 7.08 U.S. Public Land Survey Monument Record (3) (a) (b) (c) (d) (e) (f) (g) (h) (i). An additional sheet may be added if necessary to conform with said requirements.

(a) Corner location: Township 38 North
 Range 11 East/West

Town/City/Village THREE LAKES

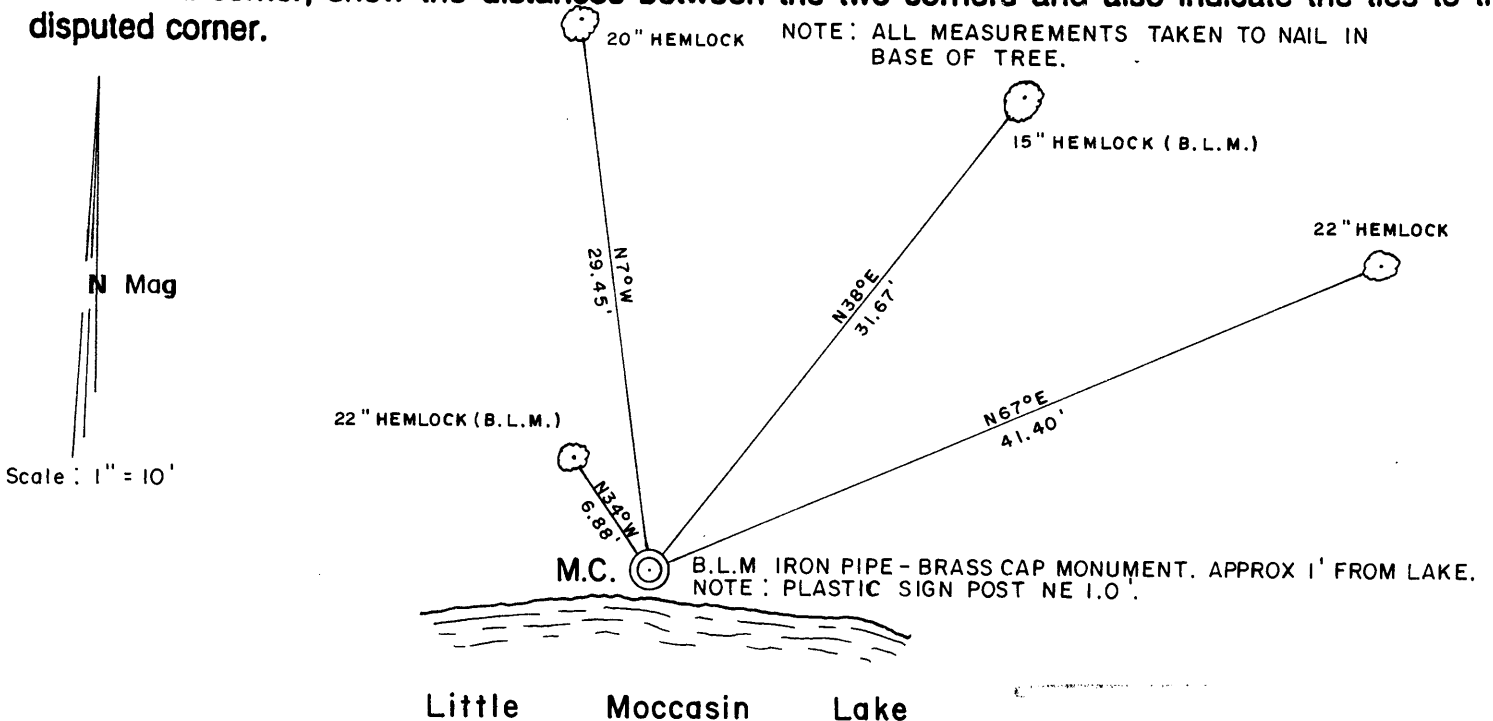
County ONEIDA



(b) (f) (g) (h) Description of monument found at this corner and if it was accepted, state all evidence (material, testimonial, occupational, plats, records, other monuments) used as a basis for accepting. If not accepted or if nothing was found, state evidence used as basis for establishing location. If reestablished through lost corner proportionate methods, indicate all monuments, distances and directions used to establish. Indicate type of monument found or set and sign post.

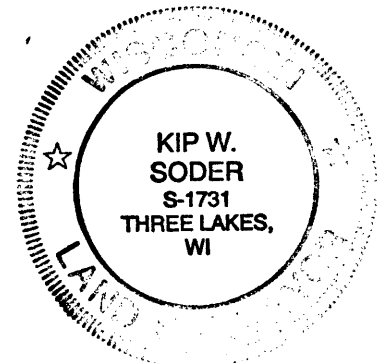
- 1859 - William daugherty. 35.00 over lake and set post for M.C.
 Original B.T.'s Hemlock 8" N50°E 231ks.
 Fir 8" N30°W 351ks
- 1953 - Hugh B. Crawford. B.L.M. Dependent Resurvey of Section Boundaries. Finds original B.T.'s and re-establishes corner. Set iron pipe-brass cap monument at M.C. position. Makes new B.T.'s.
- 1994 - Kip Soder. Uses B.L.M. monument in subdivision of Section 8.
- 2003 - Kip Soder. Prior to G.P.S. measurement of corner located M.C., made new B.T.'s and set plastic sign post.

(c) (d) (e) Plan view of corner with ties to at least 4 witness monuments. If in disagreement with previously established corner, show the distances between the two corners and also indicate the ties to the disputed corner.



(i) I, Kip W. Soder R.L.S.#1731
 (type or print name) certify that the corner location on this record was determined by me or under my direction and control and that this U.S. Public Land Survey Monument Record is correct and complete to the best of my knowledge and belief.

Kip W. Soder 5/3/04
 Signature Date



Stamp

5811081700

Index No. GH-9