

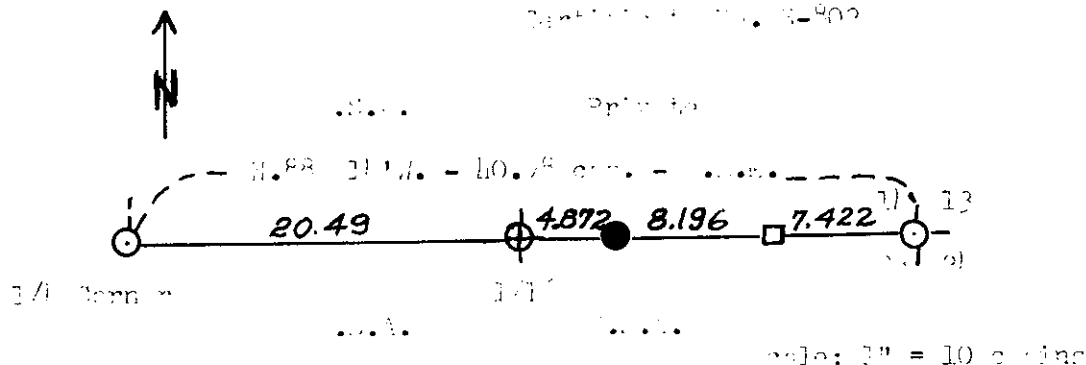
STATE OF WISCONSIN
COUNTY OF ONEIDA

State of Wisconsin }
County of Oneida }

I, Jean F. Resvick, do hereby certify that on the 12th day of March, 1967, I established the East sixteenth corner to sections 14 and 23, Township 38 North, Range 11 East, Fourth Principal Meridian, in accordance with the rules for the subdivision survey of the public lands. The plat map hereon is a correct representation of the method used and of the monuments and accessories established and installed to perpetuate the location of this corner.

Jean F. Resvick

Professional Surveyor - U. S. Forest Service
Wisconsin Certificate of Land Surveyor
Certificate No. 1-4902



Witness Corner Accessories:

Center 5"	0.819 ft.	29.61 ft.	(0.112 deg.)
W. Line 4"	0.293 ft.	21.81 ft.	(0.724 deg.)
Center 1"	0.112 ft.	20.52 ft.	(0.311 deg.)

LEGEND

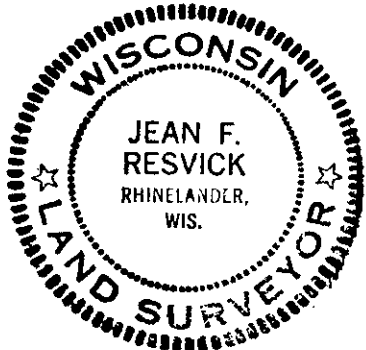
- - U. S. Survey Monuments recovered in place.
- - 1" x 1" Line Post.
- - Witness Corner established - 2" x 5" on pine copes with a cement tablet stamped to indicate corner location.
- ⊕ - 1" x 1" Center post set for 1/30 gradation between Section 14 and 23.

U. S. A. - U. S. Government Land

Office of Register of Deeds County of Oneida

I hereby certify that the within instrument was filed in the office of the _____ for record on the 12th day of January 1976, and was filed in Section _____ Page No. _____ of the County Register's Record Book No. _____

Witnessed by Doris Verage Kuehn
Title Register of Deeds



3811140010
3811140020

N-20

State of Wisconsin

County of Oneida } ss.

I James L. Will do hereby certify that on the 28th day of August 1985, I found evidence of the South one-quarter corner of Section 14 Township 38 North, Range 11 East, Fourth Principal Meridian, as described hereon; and that from this evidence I established a new monument and accessories as described hereon to perpetuate the original location of this corner.

Resident witnesses:

Michael Weber

U. S. Public Land Survey Monument Record

Index No. N-19

History of original corner establishment:

Original corner was established during the course of the subdivision of T 38 N, R 11 E, which was started Aug. 30, 1859 and completed Sept. 5, 1859 by William E. Daugherty, Deputy Surveyor.

Original B.T.'s:

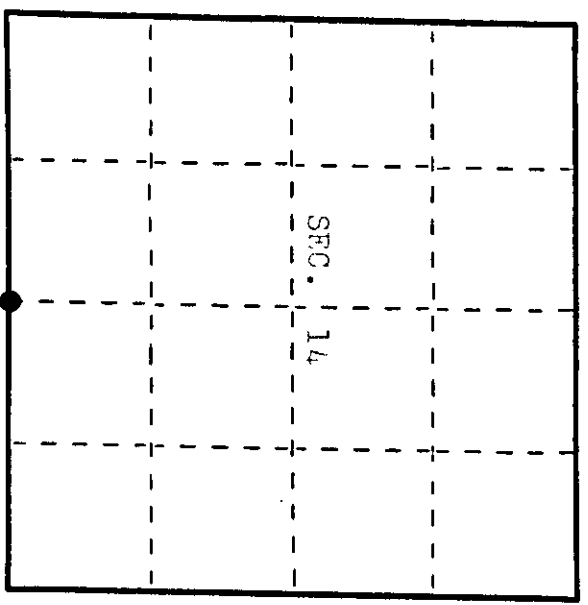
8" Tamarack N 70° W 9 lks.
8" Tamarack S 5° W 17 lks.

Description of corner evidence found:

Found a GLO 6" dia. concrete monument bras cap 4" below the swamp. Found a 4"x4" wood post 1.4' NE

Description of monument and accessories I established to perpetuate the original location of this corner.
Placed and set out the following new bearing trees:

- 4" Spruce N 66° E 37.29' (measurements are to a nail in the
2" Spruce S 90° E 9.81' side of the trees.)
3" Spruce S 37° W 20.32'
2" Spruce N 23° W 10.58'



● = Corner monument restored.

Dated at Eagle River, Wis., this 20th day of September, 1985.

Signature [Signature] Title Registered Land Surveyor, Registration No. S-1410
(County Surveyor, Registered Land Surveyor, or other duly authorized official)

Office of Register of Deeds, County of Oneida
Instrument was filed in this office for record on the 18th day of September, 1985, at 8:00 o'clock A.M.

[Signature] (Register of Deeds)

By [Signature] Deputy

Describe any material discrepancy between the location of the corner as restored or reestablished and the location of that corner as previously restored or reestablished by distance and direction. Show the discrepancy on the plan view drawing under (d), above. Show the distances between the corner as previously restored or reestablished and (1) the corner as restored or reestablished, and (2) to at least 2 of the witness monuments shown on the drawing in (d), above.

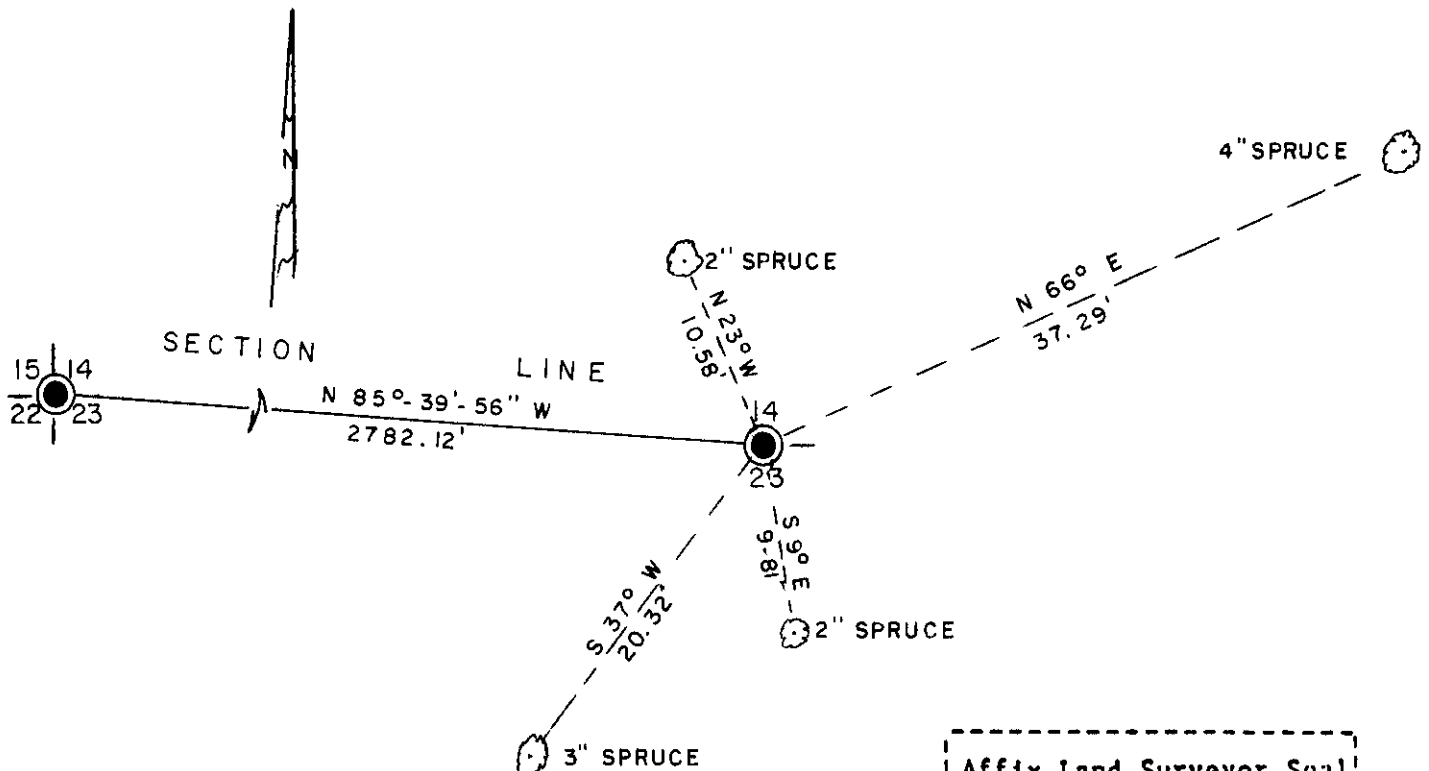
None. See sketch below.

Was the corner restored through acceptance of (1) an obliterated evidence location, or, (2) a found perpetuated location?

Corner was restored through acceptance of a found perpetuated location.

Was the corner reestablished through lost corner proportionate methods? If so, show the method, including the directions and distances to other public land survey corners used as evidence or used for proportioning in determining the corner location?

No. See sketch below.



— LEGEND —

SCALE : 1" = 10'

● G.L.O. CON. MON. BRASS CAP IN PLACE



I, James L. Will, R.L.S. 1410
 (type or print name) certify that the corner location shown on this record was determined by me or under my direction and control and that this U.S. Public Land Survey Monument Record is correct and complete to the best of my knowledge and belief.

James L. Will Sept. 20, 1985
 Signature Date

Stock No. 26273

U.S. PUBLIC LAND SURVEY MONUMENT RECORD

Index No. N-19

State of Wisconsin } ss.
County of Oneida

I William B. Cochran, do hereby certify that on the 20th day of April, 1989, I found evidence of the South Quarter corner of Section 14 Township 38 North, Range 11 East, Fourth Principal Meridian, as described hereon; and that from this evidence I established a new monument and accessories as described hereon to perpetuate the original location of this corner.

Resident witnesses:

History of original corner establishment:

Dependent Resurvey in 1941 by Hugh B. Crawford. West between Sections 14 and 23, at 40.98 chains, set corner position is restored from original bearing tree evidence. Set A concrete monument, 24 inches long, 6 inches in diameter, with a brass cap marked; S14, S23, 1/4, 1941. From which the following bear;

Cedar 8" N71°00'E 448 Links
Spruce 8" N88°15'W 481 1/2 links

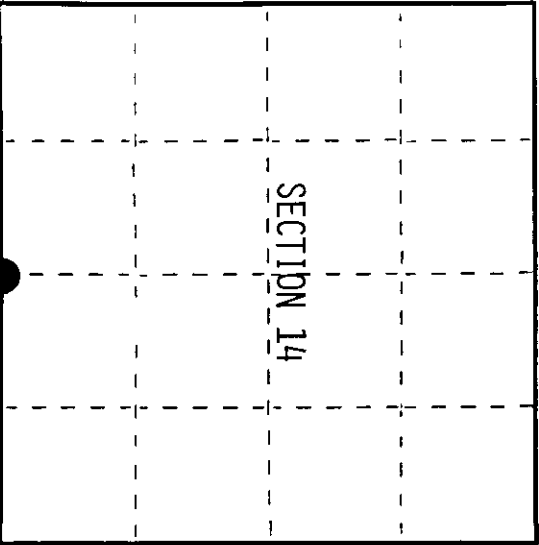
Description of corner evidence found:
Found monument as described and in place, from which the following bear;

Cedar 13" N71°00'E 295.68 feet
Spruce (Snag) N88°15'W 317.79 feet

Description of monument and accessories I established to perpetuate the original location of this corner.

Set a Steel Sign Post, West, Alongside Monument.

No other bearing trees available.



= Corner monument restored.

Dated at Hiles, Wis., this 28th day of August, 1989

Signature William B. Cochran, Land Surveyor
(County Surveyor, Registered Land Surveyor, or other duly authorized official)
Registration No. S-1107

Office of Register of Deeds, County of ... I hereby certify that the within instrument was filed in this office for record on the ... day of ... 19... at ... o'clock ... M.

(Register of Deeds)

By ... Deputy

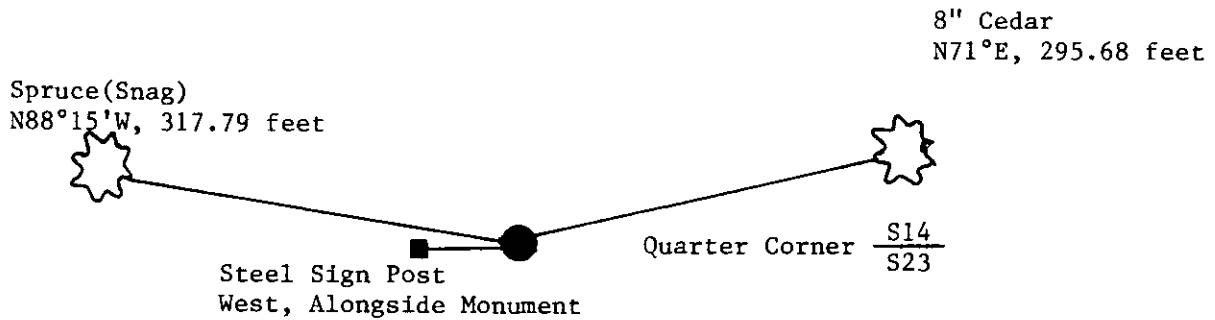
(e) Describe any material discrepancy between the location of the corner as restored or reestablished and the location of that corner as previously restored or reestablished by distance and direction. Show the discrepancy on the plan view drawing under (d), above. Show the distances between the corner as previously restored or reestablished and (1) the corner as restored or reestablished, and (2) to at least 2 of the witness monuments shown on the drawing in (d), above.

See drawing below.

(f) Was the corner restored through acceptance of (1) an obliterated evidence location, or, (2) a found perpetuated location?

Restored through acceptance of a found perpetuated location.

(g&h) Was the corner reestablished through lost corner proportionate methods? If so, show the method, including the directions and distances to other public land survey corners used as evidence or used for proportioning in determining the corner location?



REGISTER OF DEEDS OFFICE
ONEIDA COUNTY, WIS.
FILED
APR 8 1991
At _____ O'Clock _____ M
THOMAS H. LEIGHTON
REGISTER OF DEEDS



(i) I, William B. Cochrane
[type or print name] certify that the corner location shown on this record was determined by me or under my direction and control and that this U.S. Public Land Survey Monument Record is correct and complete to the best of my knowledge and belief.

William B. Cochrane August 28, 1989
Signature Date

Survey requested by: Tom Hordwin 2/8/90
District Ranger Date