



Stock No. 26273

U.S. PUBLIC LAND SURVEY MONUMENT RECORD

Index No. R-19

State of Wisconsin } ss.
County of Oneida

I, William B. Cochran, do hereby certify that on the 20th day of April, 1989, I found evidence of the South Quarter corner of Section 23 Township 38 North, Range 11 East, Fourth Principal Meridian, as described hereon; and that from this evidence I established a new monument and accessories as described hereon to perpetuate the original location of this corner.

Resident witnesses:

History of original corner establishment:
Dependent Resurvey in 1941 by Hugh B. Crawford. West between Sections 23 and 26, at proportionate distance of 40.89 1/2 chains, set a concrete monument, 24 inches long, 6 inches in diameter with a brass cap marked; S23, S26, 1/4, 1941. From which the following bear;

Cedar (Dead)	6"	N73°30'E	69 links
White Pine	10"	S 0°45'W	293 links

Description of corner evidence found:

Found monument as described and in place, from which the following bear;

Cedar (Stump) N73°30'E 45.54 feet

Description of monument and accessories I established to perpetuate the original location of this corner.

Blazed and scribed a new bearing tree;

White Birch	9"	S86°E	75.95 feet
Steel Sign Post	NW		Alongside Monument

No other bearing trees were available.

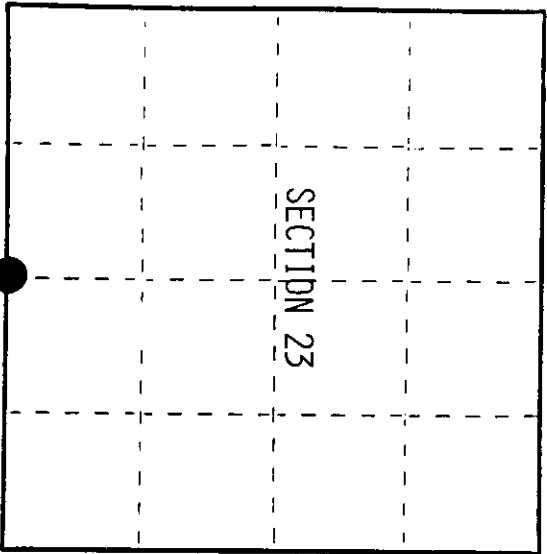
Dated at Hills, Wis., this 28th day of August, 1989

Signature *William B. Cochran* Title Land Surveyor Registration No. S-1107
(County Surveyor, Registered Land Surveyor, or other duly authorized official)

Office of Register of Deeds, County of _____, I hereby certify that the within instrument was filed in this office for record on the _____ day of _____, 19____ at _____ o'clock _____ M.

(Register of Deeds)

By _____ Deputy



020030020

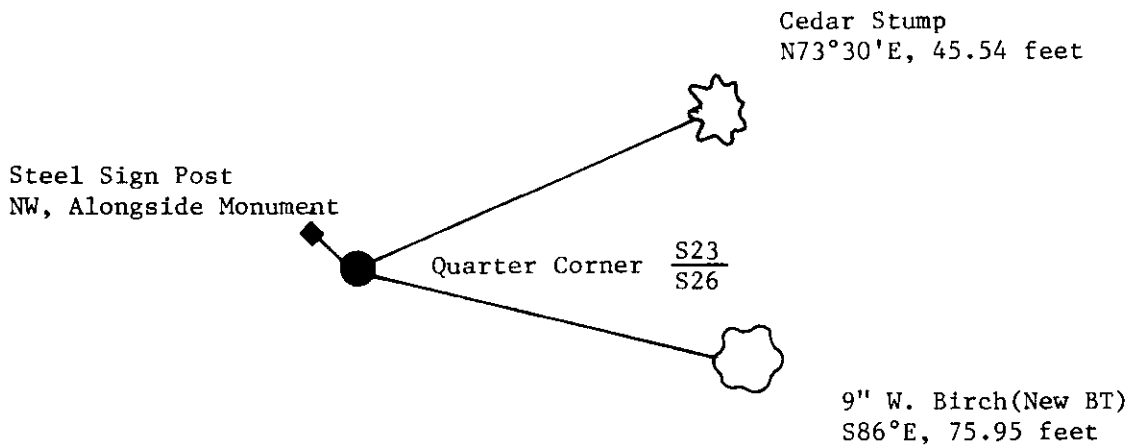
Describe any material discrepancy between the location of the corner as restored or reestablished and the location of that corner as previously restored or reestablished by distance and direction. Show the discrepancy on the plan view drawing under (d), above. Show the distances between the corner as previously restored or reestablished and (1) the corner as restored or reestablished, and (2) to at least 2 of the witness monuments shown on the drawing in (d), above.

See drawing below.

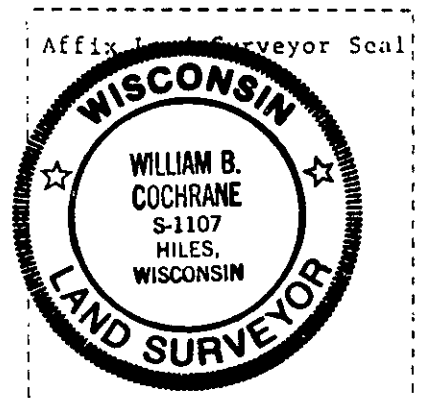
Was the corner restored through acceptance of (1) an obliterated evidence location, or, (2) a found perpetuated location?

Restored through acceptance of a found perpetuated location.

Was the corner reestablished through lost corner proportionate methods? If so, show the method, including the directions and distances to other public land survey corners used as evidence or used for proportioning in determining the corner location?



REGISTER OF DEEDS OFFICE
ONEIDA COUNTY, WIS.
FILED
APR 8 1991
At _____ O'Clock _____ M
THOMAS H. LEIGHTON
REGISTER OF DEEDS



I, William B. Cochrane
(type or print name) certify that the corner location shown on this record was determined by me or under my direction and control and that this U.S. Public Land Survey Monument Record is correct and complete to the best of my knowledge and belief.

William B. Cochrane August 28, 1989
Signature Date

Survey requested by: Sam Menden 2/8/90
District Ranger Date