



Stock No. 26273

U.S. PUBLIC LAND SURVEY MONUMENT RECORD

State of Wisconsin

County of Forest } ss.

I, William B. Cochran, do hereby certify that on the 14th day of February, 1990, I found evidence of the West Quarter corner of Section 19 Township 38 North, Range 12 East, Fourth Principal Meridian, established a new monument and accessories as described hereon to perpetuate the original location of this corner.

Resident witnesses:

History of original corner establishment:

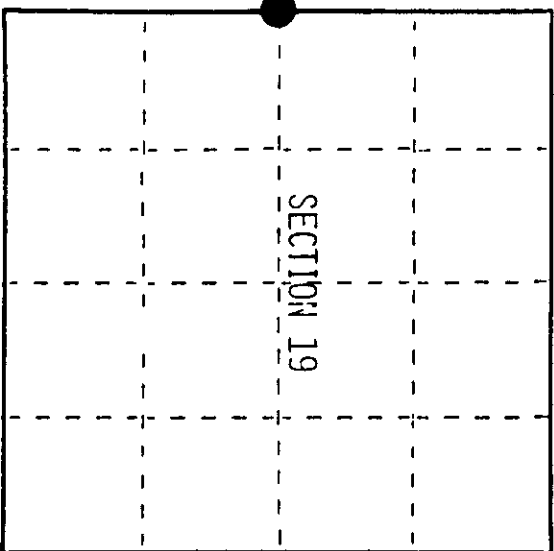
Dependent Resurvey in 1937 by Wesson Cook. N00°09'W between Sections 19 and 24, at 39.75 chains, the corner point is marked by a cedar post. In place of cedar post set an iron post, 3 feet long, 2 inches in diameter, with a brass cap marked; 1/4, S19, S24, 1937. From which the following bear: Cedar 9" N68°30'E 51 Links Cedar 7" S50°30'W 42 Links

Description of corner evidence found:

Found monument as described and in place, from which the following bear: Cedar 14" N68°30'E 34.20 feet Cedar 13" S50°00'W 28.00 feet

Description of monument and accessories I established to perpetuate the original location of this corner.

Set: Steel Sign Post North 5.00 feet



● = Corner monument restored.

Dated at Hills, Wis., this 15th day of February, 1990

Signature William B. Cochran Title Land Surveyor Registration No. S-1107 (County Surveyor, Registered Land Surveyor, or other duly authorized official)

Office of Register of Deeds, County of Hills, I hereby certify that the within instrument was filed in this office for record on the 15th day of February, 1990 at 10:00 o'clock A.M.

(Register of Deeds)

By: Deputy

Index No. P-1

FILE NUMBER 24-38-11 CANADA COUNTY

3811242000

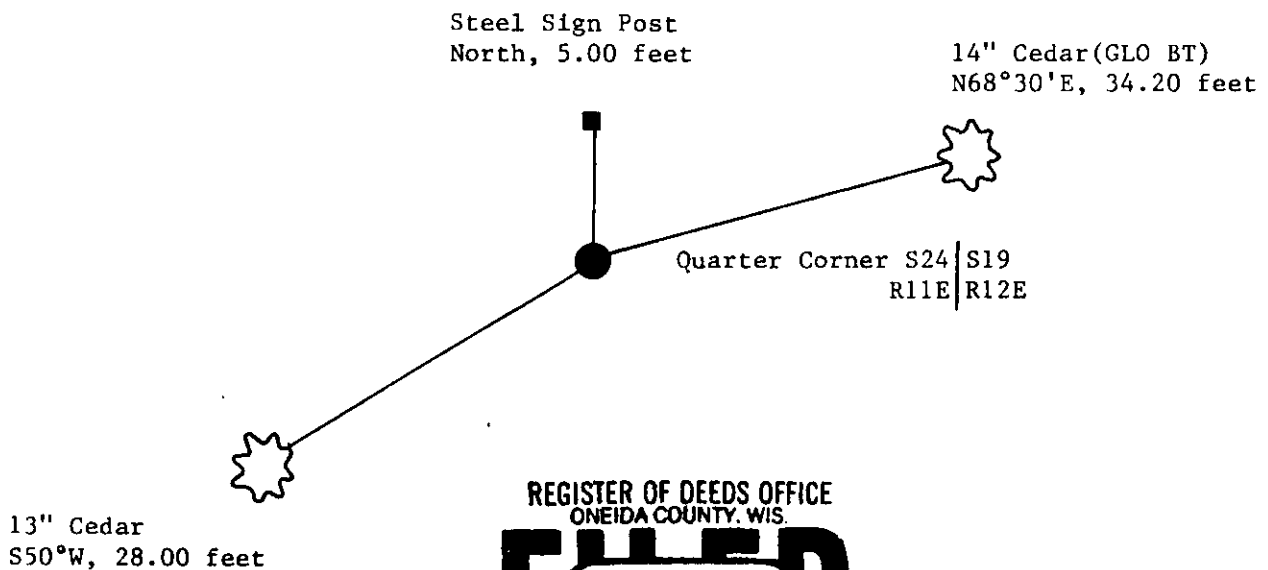
e) Describe any material discrepancy between the location of the corner as restored or reestablished and the location of that corner as previously restored or reestablished by distance and direction. Show the discrepancy on the plan view drawing under (d), above. Show the distances between the corner as previously restored or reestablished and (1) the corner as restored or reestablished, and (2) to at least 2 of the witness monuments shown on the drawing in (d), above.

See drawing below.

(f) Was the corner restored through acceptance of (1) an obliterated evidence location, or, (2) a found perpetuated location?

Restored through acceptance of a found perpetuated location.

(g&h) Was the corner reestablished through lost corner proportionate methods? If so, show the method, including the directions and distances to other public land survey corners used as evidence or used for proportioning in determining the corner location?



REGISTER OF DEEDS OFFICE
ONEIDA COUNTY, WIS.
FILED
APR 8 1991
At _____ O'Clock _____ M
THOMAS H. LEIGHTON
REGISTER OF DEEDS

Affix Land Surveyor Seal

(i) I, William B. Cochrane
(type or print name) certify that the corner location shown on this record was determined by me or under my direction and control and that this U.S. Public Land Survey Monument Record is correct and complete to the best of my knowledge and belief.

William B. Cochrane Feb. 20, 1990
Signature Date

Survey requested by; Pam Dordve 3/1/90
District Ranger Date



Stock No. 26273

U.S. PUBLIC LAND SURVEY MONUMENT RECORD

Index No. P-25

State of Wisconsin

County of Oneida } ss.

I, William B. Cochran, do hereby certify that on the 14th day of February, 1990, I found evidence of the East Quarter corner of Section 24 Township 38 North, Range 11 East, Fourth Principal Meridian, as described hereon; and that from this evidence I established a new monument and accessories as described hereon to perpetuate the original location of this corner.

Resident witnesses:

History of original corner establishment:

Dependent Resurvey in 1937 by Wesson Cook. N00°09'W between Sections 19 and 24, at 39.75 chains, the corner point is marked by a cedar post. In place of post, set an iron post, 3 feet long, 2 inches in diameter, with a brass cap marked; 1/4, S19, S24, 1937. From which the following bear:

Cedar	9"	N68°30'E	51 links
Cedar	7"	S50°30'W	42 links

Description of corner evidence found:

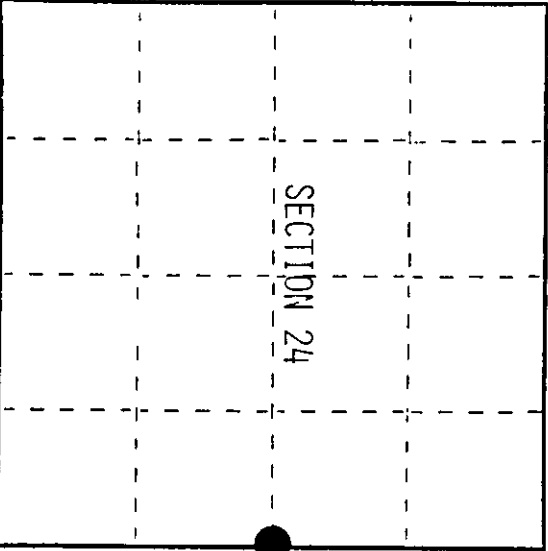
Found monument as described and in place, from which the following bear;

Cedar	14"	N68°30'E	34.20 feet
Cedar	13"	S50°00'W	28.00 feet

Description of monument and accessories I established to perpetuate the original location of this corner.

Set:

Steel Sign Post North 5.00 feet



= Corner monument restored.

Dated at Hiles Wis. this 15th day of February 19 90

Signature William B. Cochran Title Land Surveyor Registration No. S-1107 (County Surveyor, Registered Land Surveyor, or other duly authorized official)

Office of Register of Deeds, County of ... I hereby certify that the within instrument was filed in this office for record on the ... day of ... 19 ... at ... o'clock ... M.

(Register of Deeds)

By Deputy

3811242000

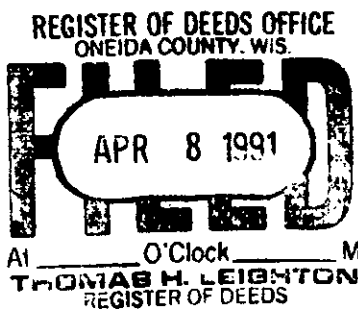
d) Describe any material discrepancy between the location of the corner as restored or reestablished and the location of that corner as previously restored or reestablished by distance and direction. Show the discrepancy on the plan view drawing under (d), above. Show the distances between the corner as previously restored or reestablished and (1) the corner as restored or reestablished, and (2) to at least 2 of the witness monuments shown on the drawing in (d), above.

See drawing below.

(f) Was the corner restored through acceptance of (1) an obliterated evidence location, or, (2) a found perpetuated location?

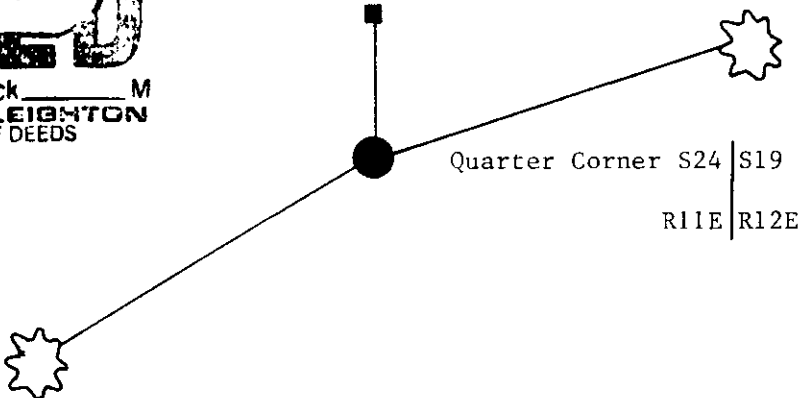
Restored through acceptance of a found perpetuated location.

(g&h) Was the corner reestablished through lost corner proportionate methods? If so, show the method, including the directions and distances to other public land survey corners used as evidence or used for proportioning in determining the corner location?

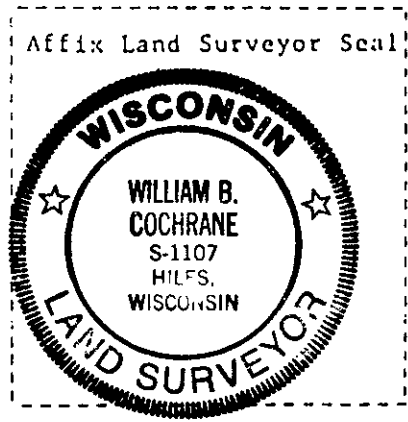


Steel Sign Post
North, 5.00 feet

14" Cedar (GLO BT)
N68°30'E, 34.20 feet



13" Cedar
S50°W, 28.00 feet



(i) I, William B. Cochrane
(type or print name) certify that the corner location shown on this record was determined by me or under my direction and control and that this U.S. Public Land Survey Monument Record is correct and complete to the best of my knowledge and belief.

William B. Cochrane Feb. 20, 1990
Signature Date

Survey requested by: Sam Gordon 3/1/90
District Ranger Date