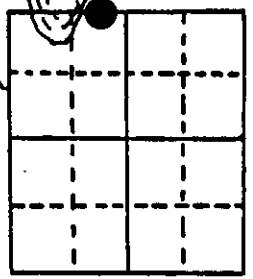


U.S. PUBLIC LAND SURVEY MONUMENT RECORD

Note: This form is intended and designed to fulfill all requirements of Wisconsin Administrative Code, Chapter A-E 5.02, U.S. Public Land Survey Monument Record (3) (a) (b) (c) (d) (e) (f) (g) (h) (i). An additional sheet may be added if necessary to conform with said requirements.

(a) Corner location: Township 38 North
 Range 11 East/West
 Town/City/Village of THREE LAKES
 County of ONEIDA

M.C. on EAST
SIDE CROOKED LK



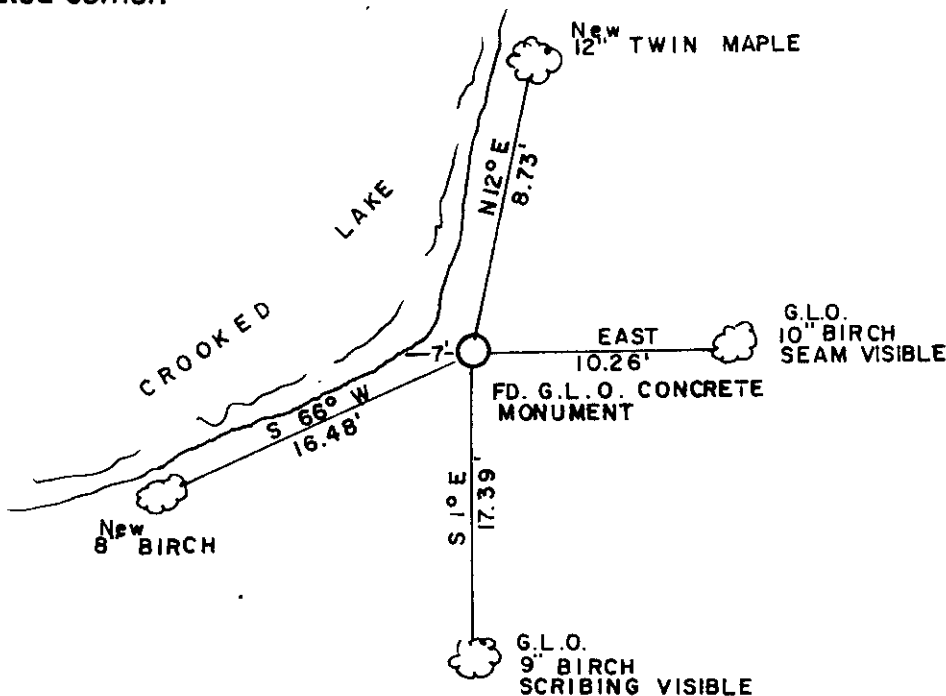
Section 35

(b) (f) (g) (h) Description of monument found at this corner and if it was accepted, state all evidence (material, testimonial, occupational, plats, records, other monuments) used as a basis for accepting. If not accepted or if nothing was found, state evidence used as basis for establishing location. If reestablished through lost corner proportionate methods, indicate all monuments, distances and directions used to establish.

-1859 William E. Daugherty established original corner @ 69.24 ch. west of N.E. corner; B.T.s Hemlock 10 N 88 E 11; Hemlock 10 S 34 E 10
 -1941 Hugh B. Crawford a surveyor with the General Land Office executed a resurvey of Sec. 35 and at the intersection of the north line of Sec. 35 and the S.E. shore of Crooked Lake set a concrete monument 24"x6" for the meander corner accepting the shore as the best available evidence of the position of the orig. corner and made the following B.T.s Birch 5" N55E 62lks.: Birch S30W 29lks.

At this corner I found the concrete monument in good condition and found the position to check with G.L.O. measurements to the N $\frac{1}{4}$ and N.W. corner of Sec. 35. I recovered 2 birch bearing trees which I believe have been made by the G.L.O. however they do not check with the bearing and distances given. I accepted the monument as the corner and made the following bearing trees:

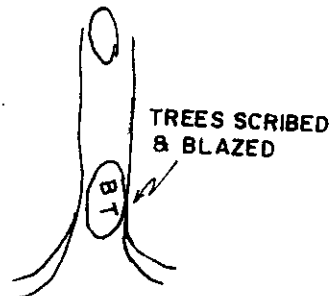
(c) (d) (e) Plan view of corner with ties to at least 4 witness monuments. If in disagreement with previously established corner, show the distances between the two corners and also indicate the ties to the disputed corner.



— MAGNETIC BEARINGS WITH A HAND HELD COMPASS
 — MEASURED TO 6" NAIL IN SIDES OF TREES
 — no scale

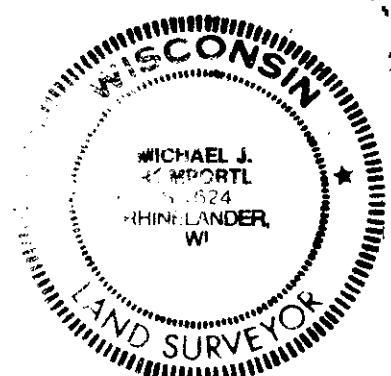
North

 N



(i) I, MICHAEL J. ROMPORTL R.L.S. 1624
 (type or print name) certify that the corner location on this record was determined by me or under my direction and control and that this U.S. Public Land Survey Monument Record is correct and complete to the best of my knowledge and belief.

Michael J. Romportl MAY 31, 1985
 Signature Date
 GENISOT & ASSOCIATES, INC — RHINELANDER, WIS.



Index No. V-18

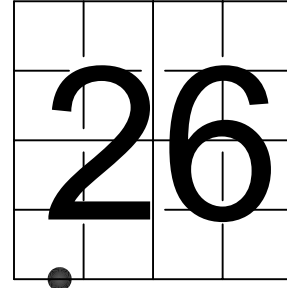
3811260034

U S PUBLIC LAND SURVEY MONUMENT RECORD

NOTE: This form is intended and designed to fulfill all requirements of Wisconsin Administrative Code, Chapter A-E 7.08 U.S. Public Land Survey Monument Record (3) (a-i)

A-E 7.08(3)(a) Identity of corner:
MEANDER CORNER SOUTH LINE OF
SECTION 26, TOWNSHIP 38 NORTH,
RANGE 11 EAST OF THE 4TH PM,
TOWN OF THREE LAKES,
COUNTY OF ONEIDA

WISCORS - ONEIDA COUNTY
N: 202,298.740 USft (XXX,XXX.XXX)
E: 346,869.840 USft (XXX,XXX.XXX)
Datum: NAD83 (2011)
GNSS Method RTK
GNSS Control WISCORS VRS



The coordinate value shown has been verified by the average of two or more GPS observations at a markedly different time. Coordinates shown in parenthesis are previously published values.

A-E 7.08(3)(b)

Original Surveyor: William E. Daugherty - August 30 - September 5, 1859

Original Accessories:

Hemlock 10	N 88° E	11 links
Hemlock 10	S 34° E	10 links

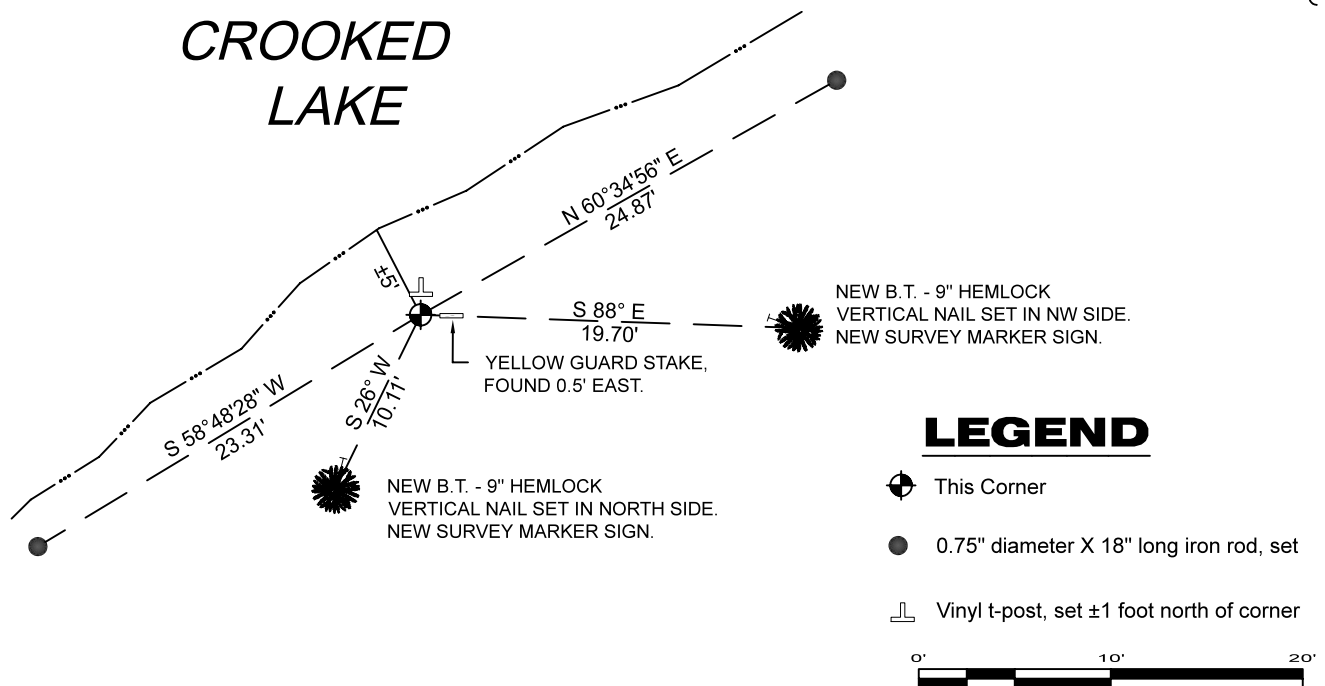
See previous U.S.Public Land Survey Monument Location Record - V-18 - May 31, 1985 - Surveyor 1624 - Michael J. Romportl - THENCE:

May 15, 2017 - Surveyor 1763 - Thomas A. Boettcher - indicates this position as "G.L.O. 6" diameter concrete monument found" on Oneida County Map #B7992.

December 27, 2023 - I found a 5.5" diameter concrete monument with a 2.5" diameter brass cap stamped to identify the corner location. The monument is ±9" above grade and ±5 feet from the shore of Crooked Lake. I also found: all of Romportl's / Crawford's bearing trees dead, in various stages of decay, and a yellow guard stake. I established 4 new witnesses as shown below.

A-E 7.08(3)(c)(d) Plan view of corner with references to at least 4 witness monuments.

BEARINGS LISTED TO THE NEAREST
SECOND ARE REFERENCED TO WISCONSIN
COUNTY COORDINATE REFERENCE
SYSTEM - ONEIDA COUNTY ZONE.
ALL OTHER BEARINGS ARE MAGNETIC.



A-E 7.08(3)(e) 1985 Surveyor found a G.L.O. concrete monument, subsequent, surveyors found the same, as did I in 2023.

A-E 7.08(3)(f) I accept this monument as a FOUND PERPETUATED LOCATION of the corner.

A-E 7.08(3)(g)(h) This corner was not determined through lost-corner-proportionate methods.

A-E 7.08(3)(i) I, Jeffrey L. DeMuth, Professional Land Surveyor No. S-2656, hereby certify that the corner location on this record was determined by me or under my direction and control, and that this U.S. Public Land Survey Monument Record is correct and complete to the best of my knowledge, and belief.



Jeffrey L. DeMuth

December 29, 2023

SIGNATURE

DATE

43811260034