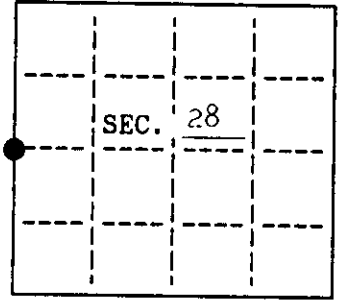


U. S. PUBLIC LAND SURVEY MONUMENT RECORD

Note: This form is intended and designed to fulfill all requirements of Wisconsin Administrative Code, Chapter A-B 7.08 U.S. Public Land Survey Monument Record (3)(a)(b)(c)(d)(e)(f)(g)(h)(i). An additional sheet may be added if necessary to conform with said requirements.

(a) CORNER LOCATION: State Plane Coordinates
 West 1/4 corner of Sec. 28 X Not available
 Township 3rd North Y Not available
 Range 11 East Datum Base _____
 Town/City Three Lakes County of Oneida



(b) HISTORY OF ORIGINAL CORNER ESTABLISHMENT
 Original Surveyor: William E. Daugherty Original B.T.'S
 Date of Survey: Commenced Aug. 30, 1859 10" Cedar N 20° W 5 lks.
 Completed Sept. 5, 1859 8" Cedar N 70° E 20 lks.

(b)(f)(g)(h) Description of monument found at this corner and if it was accepted, state all evidence (material, testimonial, occupational, plats, records, other monuments) used as a basis for accepting. If not accepted or if nothing was found, state evidence used as basis for establishing location. If reestablished through lost corner proportionate methods, indicate all monuments, distances and directions used to establish. Indicate type of monument and sign post found or set.

January 1957: Robert Bandow used & accepted a 4"x4" wood post for the corner. He does not list any bearing trees.

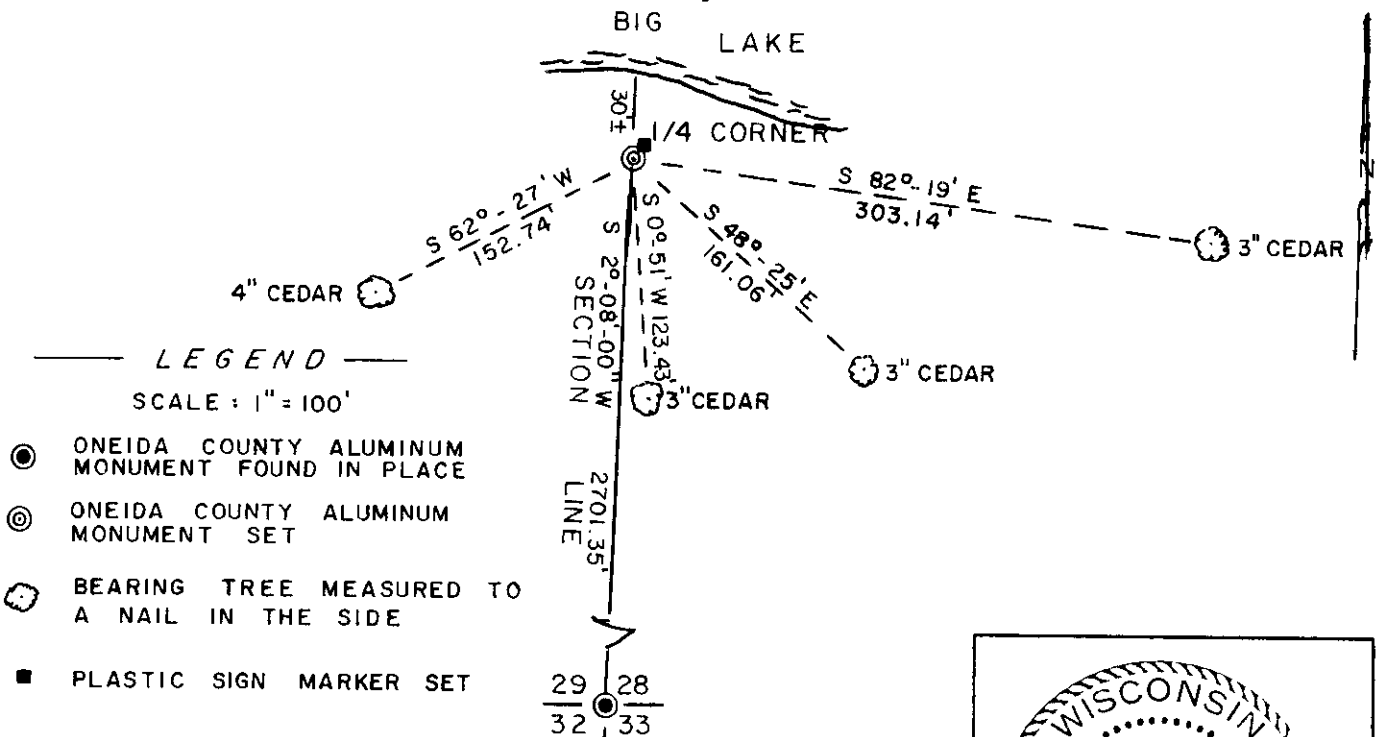
January 16, 1989: Kip W. Soder found & accepted the wood post used by Robert Bandow.

December 26, 1991: I, James L. Will found Robert Bandow's wood post and replaced it with an Oneida County aluminum monument.

Made the following bearing trees measured to a nail in the side of the trees:
 4" Cedar S 62°-27' W 152.74'
 3" Cedar S 0°-51' W 123.43'
 3" Cedar S 48°-25' E 161.06'
 3" Cedar S 82°-19' E 303.14'

Set a plastic sign marker 0.5' northeast of the corner.

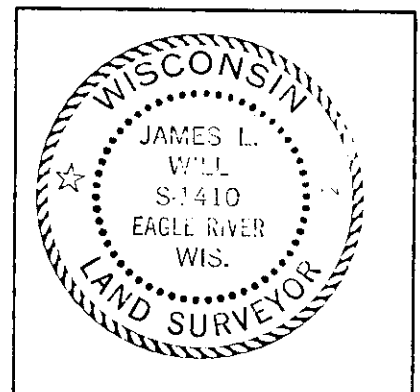
(c)(d)(e) Plan view of corner with ties to at least 4 witness monuments. If in disagreement with previously established corner, show the distances between the two corners and also indicate the ties to the disputed.



(i) I, James L. Will, R.L.S. #1410 hereby certify that the corner location on this record was determined by me or under my direction and control and that this U.S. Public Land Survey Monument Record is correct and complete to the best of my knowledge and belief.

James L. Will
 Signature

January 9, 1992
 Date



INDEX NO. T-9

3811292000