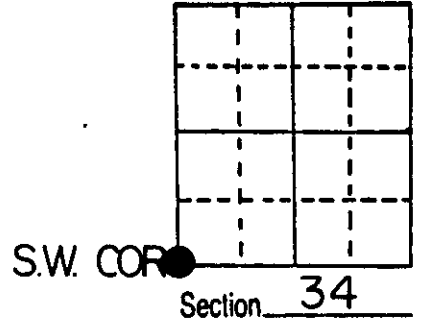


U.S. PUBLIC LAND SURVEY MONUMENT RECORD

Note: This form is intended and designed to fulfill all requirements of Wisconsin Administrative Code, Chapter A-E 5.02, U.S. Public Land Survey Monument Record (3) (a) (b) (c) (d) (e) (f) (g) (h) (i). An additional sheet may be added if necessary to conform with said requirements.

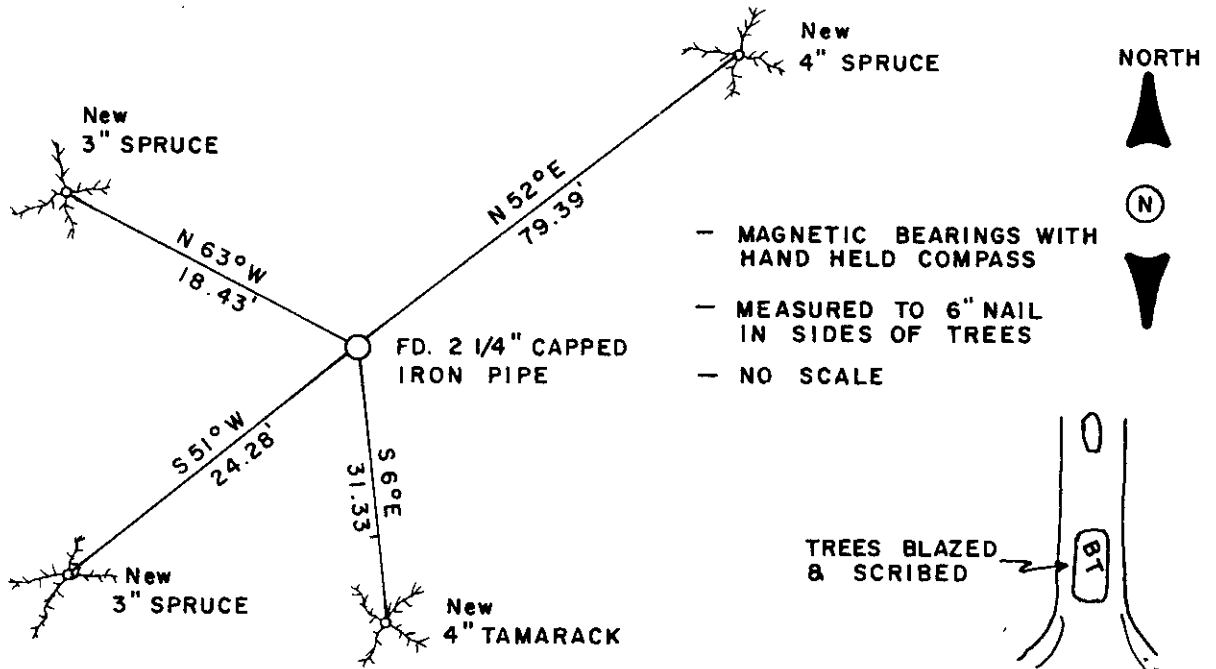
(a) Corner location: Township 38 North
 Range 11 East/West
 Town/City/Village of THREE LAKES
 County of ONEIDA



(b) (f) (g) (h) Description of monument found at this corner and if it was accepted, state all evidence (material, testimonial, occupational, plats, records, other monuments) used as a basis for accepting. If not accepted or if nothing was found, state evidence used as basis for establishing location. If reestablished through lost corner proportionate methods, indicate all monuments, distances and directions used to establish.

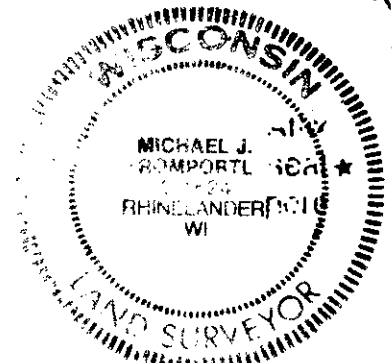
- 1857 Alfred Millard established original corner 80 chains west of SE corner. B.T.s; Tam. 6 N55 W 11 , Tam. 6 N 41 E 40 , Tam. 6 S 39 E 19 , Tam 6 S43 W 28.
- 1935 Maine states in his book , iron pipe 2 1/4" stamped cap with steel die, identified by stump of original B.T. ; Tam. 6 S 39 E 19, Mellindy set a post in it scribed orig. B.T. , his scribed post was here, also found point of original stake deep in hole. New B.T.s; Spruce 4 S65 W 68 lks., Spruce 4 N 53 E 1.45
- 1950 F.R. Wincentzen @ corner while working in Sec.34.
- At this corner I found the iron pipe and the stubs of Maines B.T. and witnessed the corner as shown below.

(c) (d) (e) Plan view of corner with ties to at least 4 witness monuments. If in disagreement with previously established corner, show the distances between the two corners and also indicate the ties to the disputed corner.



(i) I, MICHAEL J. ROMPORTL R.L.S. 1624
 (type or print name) certify that the corner location on this record was determined by me or under my direction and control and that this U.S. Public Land Survey Monument Record is correct and complete to the best of my knowledge and belief.

Michael J. Romportl MAY 31, 1985
 Signature Date



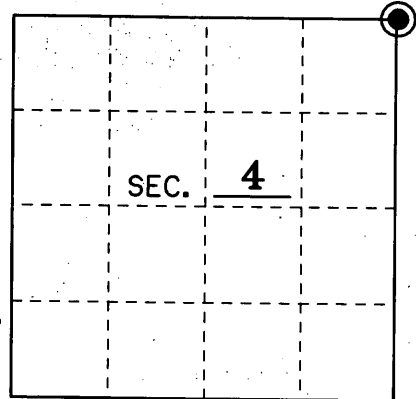
Index No. 2-13

3811330000

U.S. PUBLIC LAND SURVEY MONUMENT RECORD

Note: This form is intended and designed to fulfill all requirements of Wisconsin Administrative Code, Chapter A-E 7.08 U.S. Public Land Monument Record (3)(a)(b)(c)(d)(e)(f)(g)(h)(i). An additional sheet may be added if necessary to conform with said requirements.

(a) CORNER LOCATION: Northeast County or State Plane Coordinates
 Section 4 Corner of Section 4 Northing _____
 Township 37 North Easting _____
 Range 11 East Datum Base _____
 Township/City Piehl County of Oneida



(b) HISTORY OF ORIGINAL CORNER ESTABLISHMENT Original B.T.'s
 Original Surveyor: Hiram Fellows 6" Tamarack N 55°W 11 Lks.
 Date of Survey: July, 1859 6" Tamarack N 41°E 40 Lks.
 6" Tamarack S 39°E 19 Lks.
 6" Tamarack S 43°W 28 Lks.

(b)(f)(g)(h) Description of monument found at this corner and if it was accepted, state all evidence (material, testimonial, occupational, plats, records, other monuments) used as a basis for accepting. If not accepted or if nothing was found, state evidence used as basis for establishing location. If reestablished through lost corner proportionate methods, indicate all monuments, distances and directions used to establish. Indicate type of monument and sign post found or set.

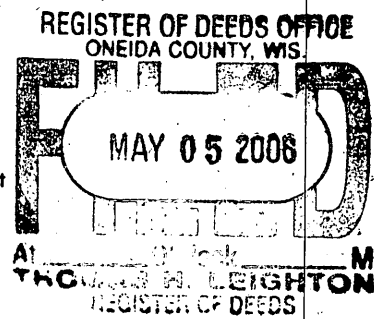
Sept. 10, 1910: J.A. Melendy of Minneapolis Cedar Lumber Co. found stumps of all four original trees. He set new post and made new B.T.'s: 3" Spruce N 31° W 42.6 lks and a 3" Tam. S 5-3/4° E 1.705 lks.

1935: Maine found 2-1/4" Iron pipe with stamped cap. He found original 6" Tam. S 39° E 19 lks. and Melendy's and original posts. He made new B.T.'s: 4" Spruce S 65° W 68 lks and a 4" Spruce N 53° E 1.45 Lks.

1950: F.R. Wincentzen found capped iron pipe and stumps of Maines B.T.'s.

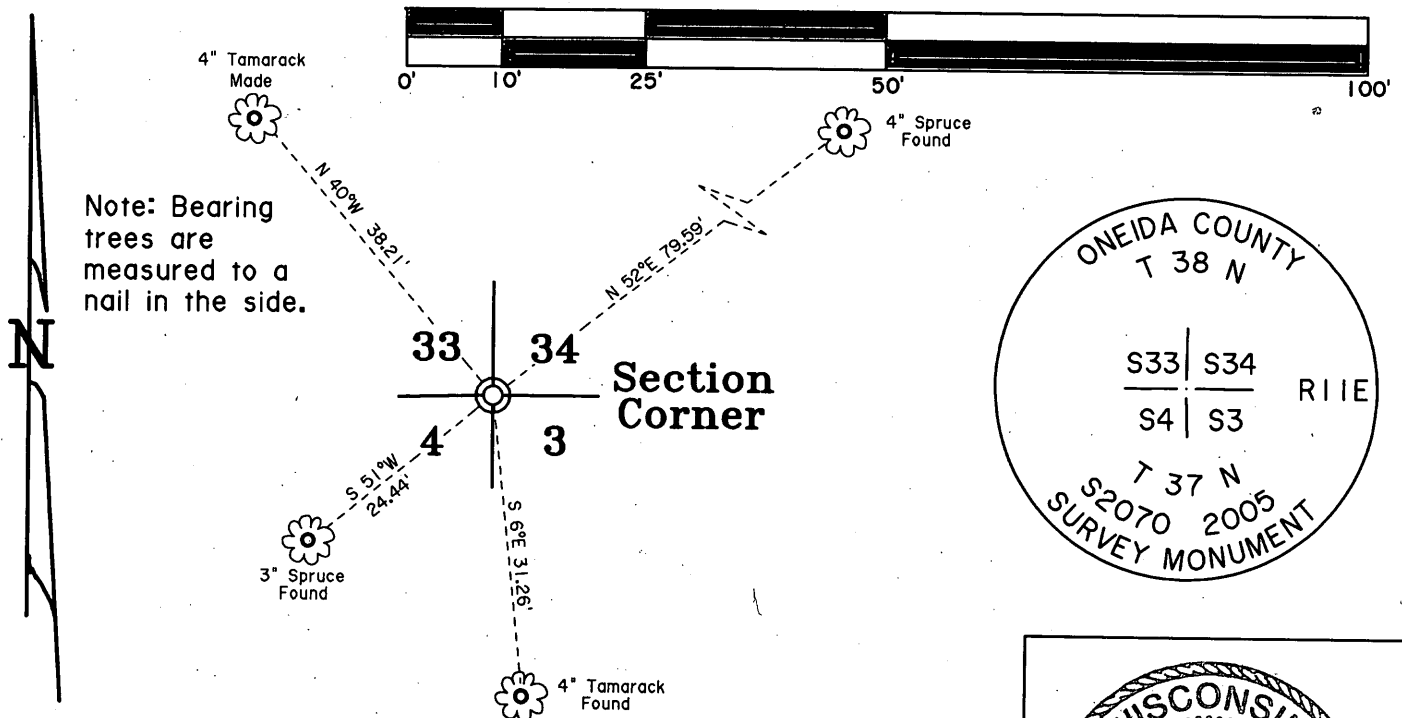
May 31, 1985: Michael Romportl finds capped iron pipe and makes new B.T.'s: 3" Spruce N 63° W 18.43 feet to nail in side, 4" Spruce N 52° E 79.39 feet to nail in side, 3" Spruce S 51° W 24.28 feet to nail in side and a 4" Tam. S 6° E 31.33 feet to nail in side.

May 19, 2005: I, Michael E. Weber find the capped iron pipe rusted off and replace with a 5 foot Oneida County Aluminum monument. I found Three of Romportl's trees and I made one new B.T. as shown below. Set a Plastic sign post 1 foot North of the corner.

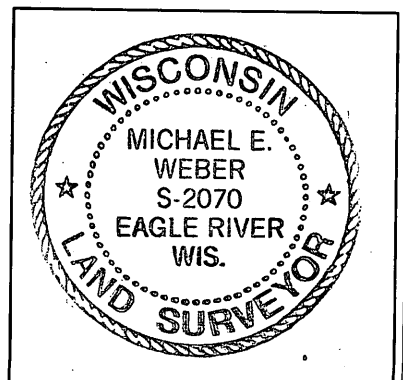
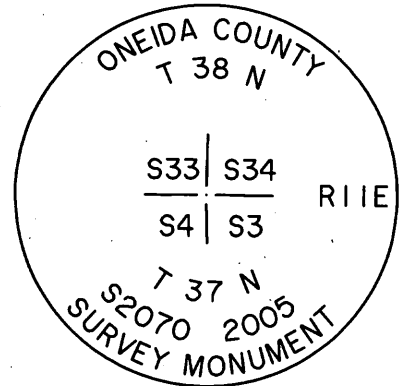


(c)(d)(e) Plan view of the corner with ties to at least 4 witness monuments. If in disagreement with previously established corner, show the distances between the two corners and also indicate the ties to the disputed.

SCALE: 1" = 20'



Note: Bearing trees are measured to a nail in the side.



(i) I, Michael E. Weber R.L.S. No. 2070

hereby certify that the corner location on this record was determined by me or under my direction and control and that this U.S. Public Land Survey Monument Record is correct and complete to the best of my knowledge and belief.

Signature Michael E. Weber Date 5-19-2005

3811330000

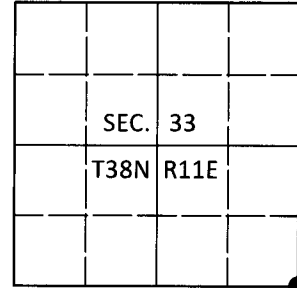
Index No. A-13

U.S. PUBLIC LAND SURVEY MONUMENT RECORD

Note: This form is intended and designed to fulfill all requirements of Wisconsin Administrative Code, Chapter A-E 7.08 U.S. Public Land Survey Monument Record (3)(a-i).

(a) CORNER LOCATION
 Cor. of Secs. 3, 4, 33 & 34
 Township 37 & 38 North
 Range 11 East of the 4th P.M.
 Town of Piehl & Three Lakes
 County of Oneida

WISCRS - Oneida County
 N: 196,596.26 USft
 E: 340,819.92 USft
 Datum: NAD83(2011)
 GNSS Method: RTN - Direct
 GNSS Control: WISCORS VRS



(b) HISTORY OF ORIGINAL CORNER ESTABLISHMENT

Original Surveyor: _____ Original Accessories: _____
 Date of Survey Commenced: _____ see previous monument record
 Completed: _____

(b)(f)(g)(h) Description of monument found at this corner and if it was accepted, state all evidence (material, testimonial, occupational, plats, records, other monuments) used as a basis for accepting. If not accepted or if nothing was found, state evidence used as basis for establishing location. If re-established through lost corner proportionate methods, indicate all monuments, distances and directions used to establish. Indicate type of monument and sign post found or set.

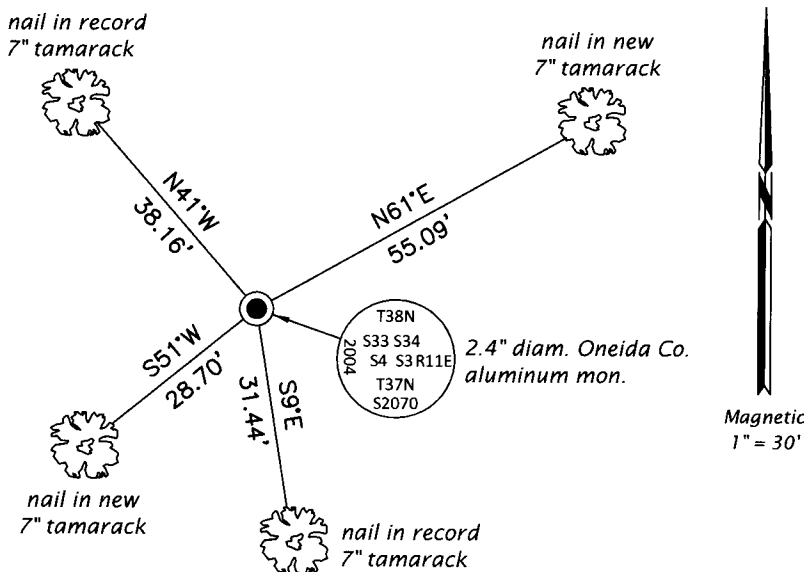
This is a perpetuation of the following monument record(s) that comprise a complete history of the corner:

May 19, 2005: USPLS Monument Record No. 3811330000 by Michael E. Weber, RLS

May 29, 2019: I found and accepted the record monument, a 2.4" diam. aluminum pipe with a 3.3" diam. Oneida Co. aluminum cap projecting 6" above the bog surface. The record bearing tree at S51°W is now standing dead. The record bearing tree at N52°E is now a stump. I found or established accessories as shown below. I found a white vinyl sign post bearing North, 1.0 ft.

The coordinate value shown has been verified by at least one of the following methods: 1) comparison to a previously GPS determined published value; 2) the value is the average of two or more GPS observations at a markedly different time; 3) one or more distances were measured back to the GPS observed corner from temporary GPS observed offset locations.

(c)(d)(e) Plan view of corner with ties to at least 4 witness monuments. If in disagreement with previously established corner, show the distances between the two corners and also indicate the ties to the disputed.

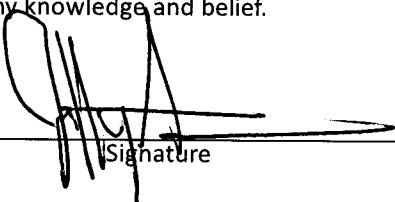


REGISTER OF DEEDS OFFICE
 ONEIDA COUNTY
 FILED

JUN 18 2019

KYLE J. FRANSON
 REGISTER OF DEEDS

(i) I, Jeffrey W. Austin, Professional Land Surveyor No. S-1885, hereby certify that the corner location on this record was determined by me or under my direction and control and that this U.S. Public Land Survey Monument Record is correct and complete to the best of my knowledge and belief.


 Signature

1 JUNE 2019
 Date