

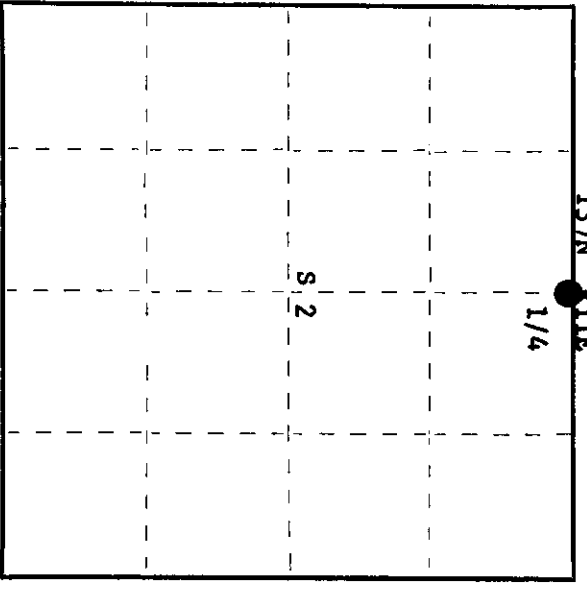
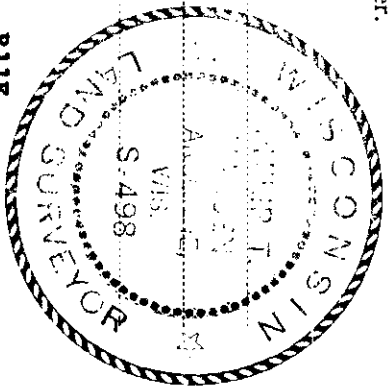
CERTIFIED LAND CORNER RESTORATION

Index No. **A-19**

State of Wisconsin }
County of **Oneida** } ss.

I **Phillip T. Hansen**, do hereby certify that on the **17th** day of **January**, 19**78**, I found evidence of the **Quarter** corner of **Section 2 & 35** Township **37 - 38**, North, Range **11 East**, Fourth Principal Meridian, as described hereon; and that from this evidence I established a new monument and accessories as described hereon to perpetuate the original location of this corner.

Resident witnesses:
Glen Barker
Jim Clafflin
Herb Wagoner



○ = Corner monument restored.

History of original corner establishment:

Original corner established by Hiram C. Fellows, Deputy Surveyor, in 1859, from which Hemlock 9" bears S60°E, 10 links; Hemlock 6" bears N40°W, 7 links. Corner recovered by J.J. Melendy, in 1910. Set new post and marked NBT - White Pine stump 40" S31 links.

Description of corner evidence found:

Recovered G.L.O. 2" Iron pipe with 2 1/2" brass cap, stamped: Monument projects 6" above ground.
Recovered Melendy's white pine stump 40" south 31 links.
Face is badly decayed, no scribe marks visible.
No evidence of G.L.O. BT's recovered.

U.S.G.L.O.S.
4 S 35
S 42
1941

Description of monument and accessories I established to perpetuate the original location of this corner.

As monument was recovered in good condition, it was left as recovered.
Marked NBT's - Maple 6" S75°W, 26.6 links,
Maple 7" S26°E, 29.5 links,
Maple 9" S86°E, 59.9 links,
Maple 9" S30°W, 30.1 links,
all scribed 1/4 BT.

Dated at **Rhineland**, Wis., this **23rd** day of **January**, 19**78**.

Signature: *Phillip T. Hansen* Title: **Registered Land Surveyor** Registration No. **S-498**
(County Surveyor, Registered Land Surveyor, or other duly authorized official)

Office of Register of Deeds, County of **Oneida** hereby certify that the within instrument was filed in this office for record on the **30th** day of **January**, 19**78** at **1:45** o'clock **P.**M.

Dorice Verage Kuehn
(Register of Deeds)

By: _____ Deputy

20021103

U.S. PUBLIC LAND SURVEY MONUMENT RECORD

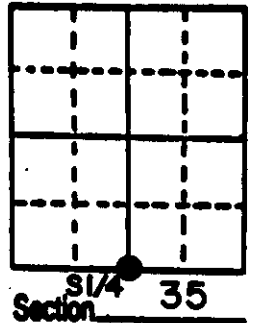
Note: This form is intended and designed to fulfill all requirements of Wisconsin Administrative Code, Chapter A-E 5.02, U.S. Public Land Survey Monument Record (a) (b) (c) (d) (e) (f) (g) (h) (i). An additional sheet may be added if necessary to conform with said requirements.

(a) Corner location: Township 38 North

Range 11 East

Town/City/Village THREE LAKE

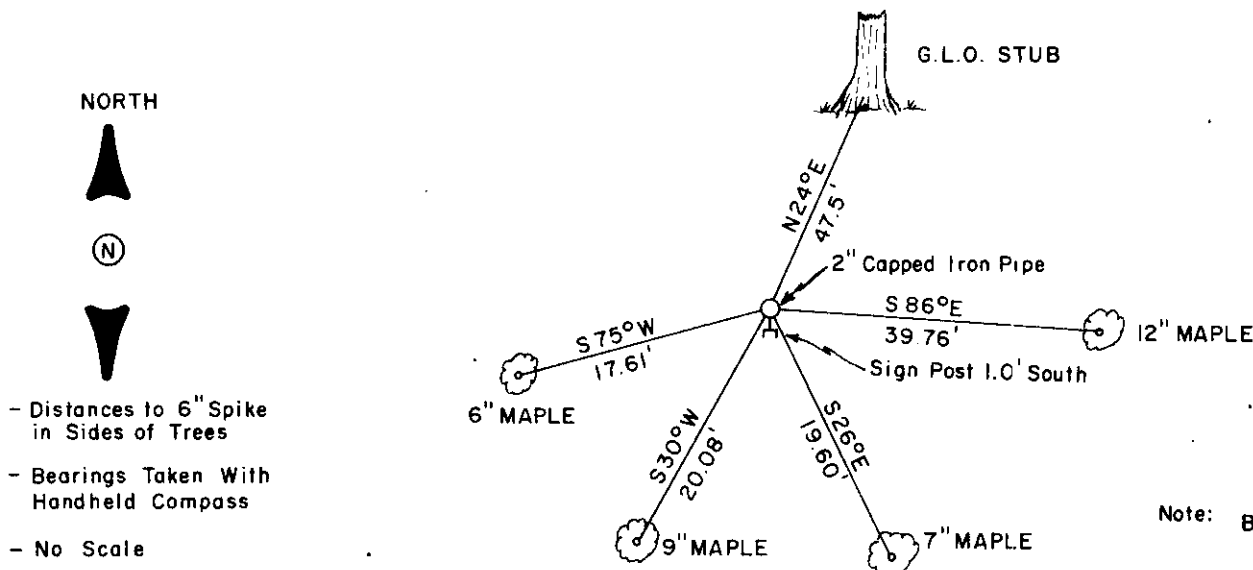
County ONEIDA



(b) (f) (g) (h) Description of monument found at this corner and if it was accepted, state all evidence (material, testimonial, occupational, plats, records, other monuments) used as a basis for accepting. If not accepted or if nothing was found, state evidence used as basis for establishing location. If reestablished through lost corner proportionate methods, indicate all monuments, distances and directions used to establish.

- 1859 Hiram Fellows established corner at 40 chains west of SE corner 35, B.T.s; Hemlock 9, S 60° E, 10; Hemlock 6, N 40° W, 7.
- 1910 Hugh B. Crawford, a surveyor with the General Land Office executed a resurvey of Sec. 35 and at the 1/4 cor. between Sec. 35 & Sec. 2, found the remains of the NW Hemlock B.T. He set a 2" x 36" capped iron pipe for the corner. B.T.s; Spruce 10, N 24 1/2° E 72 lks.; Balsam 8, S 53 1/4° E 64 lks,
- 1978 Philip Hansen a surveyor with Consolidated Papers, recovered the G.L.O. monument. (see certified land corner registration sheet A-19 on record)
- At this corner I recovered the G.L.O. monument and Hansens B.T.s in place. I set a U.S. Forest Service sign post near the corner, painted the B.T.s red and measured to the trees as shown below.

(c) (d) (e) Plan view of corner with ties to at least 4 witness monuments. If in disagreement with previously established corner, show the distances between the two corners and also indicate the ties to the disputed corner.

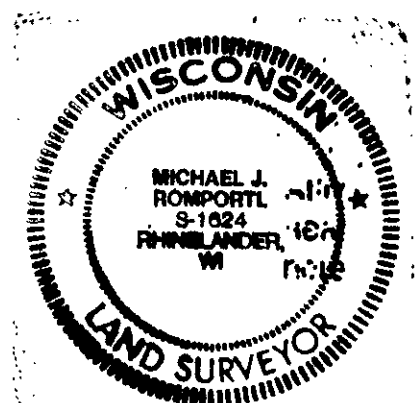


Note: BT's. by Hansen

(i) I, MICHAEL J. ROMPORTL R.L.S. - 1624
 (type or print name) certify that the corner location on this record was determined by me or under my direction and control and that this U.S. Public Land Survey Monument Record is correct and complete to the best of my knowledge and belief.

Michael J. Romportl Signature JAN. 10, 1986 Date

GENISOT & ASSOCIATES INC. - 1512 EAGLE ST. - RHINELANDER, WIS.



Index No. 2-19

3811350020