

CERTIFIED LAND CORNER RESTORATION

Index No. **A-23**

State of Wisconsin

County of **Oneida**

ss.

I **Phillip T. Hansen**, do hereby

certify that on the **17th** day of **January**, 19 **78**, I found

evidence of the **Quarter** corner of **Section 1 & 36**

Township **37 & 38**, North, Range **11 East**, Fourth Principal Meridian,

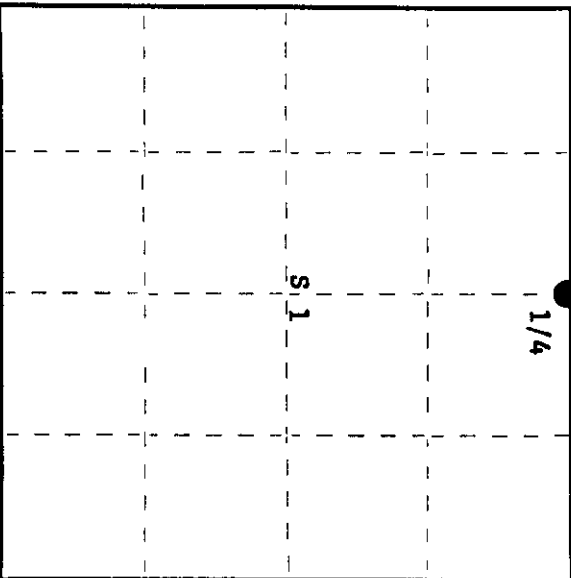
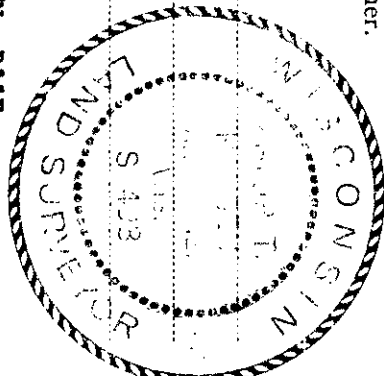
as described hereon; and that from this evidence I established a new monument and accessories as described hereon to perpetuate the original location of this corner.

Resident witnesses:

**Glen Barker**

**Jim Clafin**

**Herb Wagoner**



History of original corner establishment:

Original corner established by Hiram C. Fellows, Deputy Surveyor, in 1859, from which Hemlock 9" bears S40°W, 20 links and Hemlock 18" bears N40°E, 18 links.

Corner recovered by V.M. Maine, County Surveyor, in 1935. Recovered original Hemlock 9" S40°W, 20 links and stump of other BT. Set new post and marked NBT's - Hemlock 14" N28½°W, 50 links; Hemlock 10" N80°W, 15 links.

Description of corner evidence found:

Recovered GLO iron pipe with 2½" brass cap, stamped:

Monument projects 8" above ground. Also recovered Maine's 4" squared cedar post, scribed 1/4S-1/4S beside monument.

Recovered original BT - Hemlock 9" (20") S40°W, 20 links (19 lks), scribe marks 1/4S BT clearly visible, tree still green.

Recovered OBT's - Maine's hemlock 14" N28½°W 50 links, now a stump. Hemlock 10" (18") N80°W (N68°W) 15 links.

U.S.G.L.O.  
S 136  
S 111  
1941

Description of monument and accessories I established to perpetuate the original location of this corner.

Left monument in place as recovered.

Marked NBT's - Maple 9" N10°W, 16.25 links, scribed 1/4 BT.  
White Spruce 6" N60°E, 25.8 links, scribed 1/4 BT.  
All distances made to GLO monument.

Dated at **Rhinelander**, Wis., this **23rd** day of **January**, 19 **78**

Signature *Phillip T. Hansen* Title **Registered Land Surveyor** Registration No. **S-498**  
(County Surveyor, Registered Land Surveyor, or other duly authorized official)

Office of Register of Deeds, County of **Oneida**  
I hereby certify that the within instrument was filed in this office for record on the **6th** day of **February**, 19 **78**  
at **9:30** o'clock **A**. M.

*Donna Lange Kuehn*  
(Register of Deeds)

By \_\_\_\_\_ Deputy

07009218M



Stock No. 26273

U.S. PUBLIC LAND SURVEY MONUMENT RECORD

Index No. A-23

State of Wisconsin

County of Oneida } ss.

I, William B. Cochran, do hereby certify that on the 3rd day of December, 1989, I found evidence of the North Quarter corner of Section 1, Township 37 North, Range 11 East, Fourth Principal Meridian, as described hereon; and that from this evidence I established a new monument and accessories as described hereon to perpetuate the original location of this corner.

Resident witnesses:

History of original corner establishment:

Original Government Survey in 1859 by H.C. Fellows.

Dependent Resurvey in 1941 by Hugh B. Crawford. N81°35'W between Sections 36 and 1, at 39.19 chains, corner is determined from remains of original bearing trees. Set an iron post, 3 feet long, 2 inches in diameter, with a brass cap marked: 1/4, S36, S1, 1941, . From which the following bear:

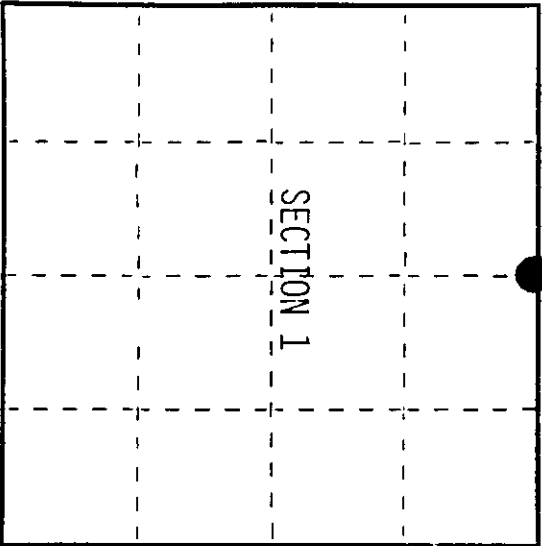
Hemlock	16"	S40°00'W	20 links (Original Bearing Tree)
Hemlock	14"	N25°30'W	51 links
Maple	8"	S74°00'E	23 links

Found monument as described and in place, from which the following bear;

Spruce	7"	N62°E	17.28 feet (Local RT)
Maple	10"	S74°E	15.18 feet (GIO BT)
Hemlock	20"	S40°W	13.20 feet (Original BT)
Maple (West Frk)	12"	N14°W	10.98 feet (Local BT)
Steel Sign Post		NW	0.50 feet

Description of monument and accessories I established to perpetuate the original location of this corner.

Painted and attached bearing tree signs to all bearing trees.



○ = Corner monument restored.

Dated at Hiles, Wis, this 30th day of January, 1990

Signature: William B. Cochran, Land Surveyor (County Surveyor, Registered Land Surveyor, or other duly authorized official) Registration No. S-1107

Office of Register of Deeds, County of Oneida, I hereby certify that the within instrument was filed in this office for record on the 30th day of January, 1990 at 10:00 o'clock A.M.

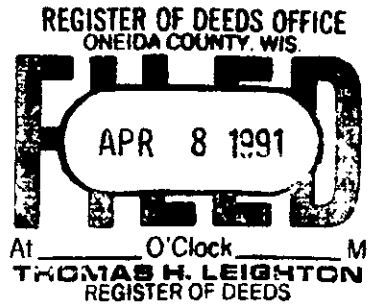
(Register of Deeds)

By: Deputy

07000020

(e) Describe any material discrepancy between the location of the corner as restored or reestablished and the location of that corner as previously restored or reestablished by distance and direction. Show the discrepancy on the plan view drawing under (d), above. Show the distances between the corner as previously restored or reestablished and (1) the corner as restored or reestablished, and (2) to at least 2 of the witness monuments shown on the drawing in (d), above.

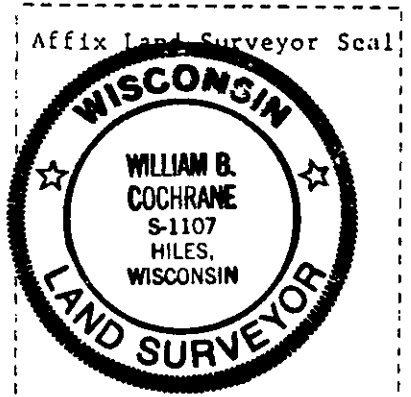
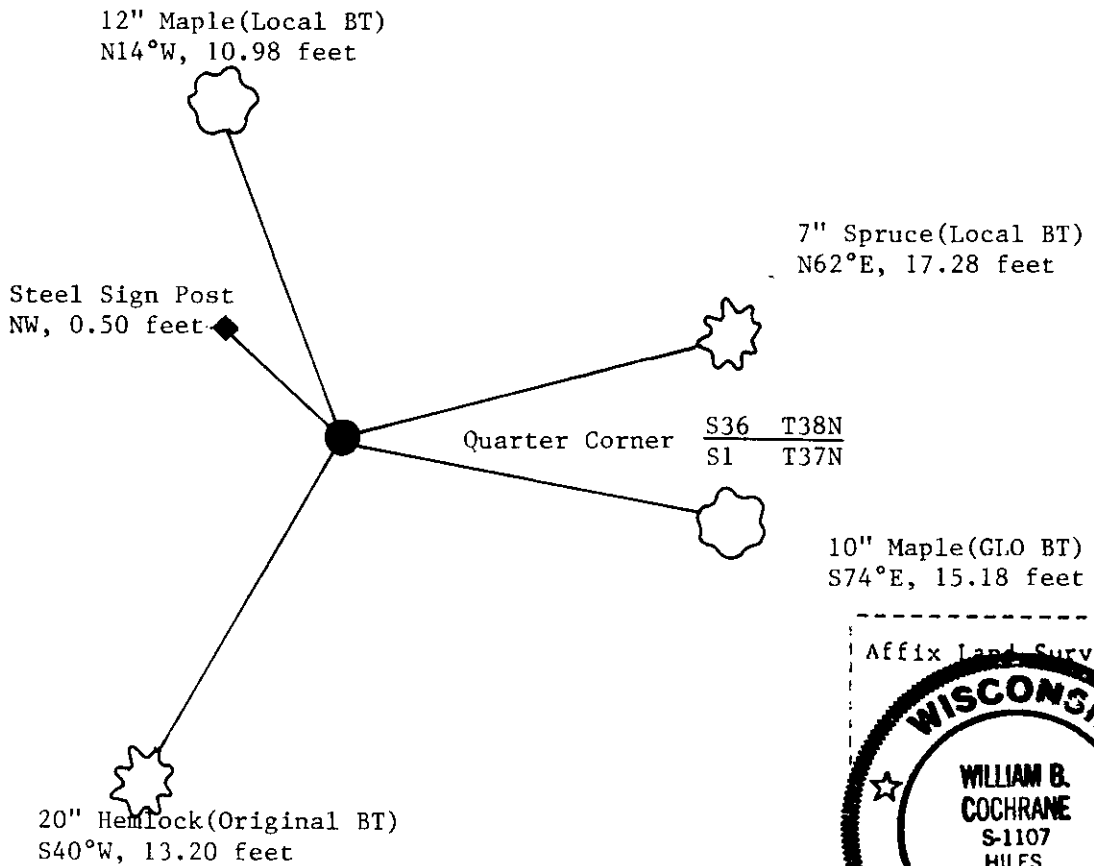
See drawing below.



(f) Was the corner restored through acceptance of (1) an obliterated evidence location, or, (2) a found perpetuated location?

Restored from acceptance of a found perpetuated location.

(g&h) Was the corner reestablished through lost corner proportionate methods? If so, show the method, including the directions and distances to other public land survey corners used as evidence or used for proportioning in determining the corner location?



(i) William B. Cochrane  
(type or print name) certify that the corner location shown on this record was determined by me or under my direction and control and that this U.S. Public Land Survey Monument Record is correct and complete to the best of my knowledge and belief.

William B. Cochrane 2/6/90  
Signature Date

Survey requested by; Cam Borki 3/1/90  
District Ranger Date

State of Wisconsin

County of Oneida

ss.

U.S. PUBLIC LAND SURVEY MONUMENT RECORD

Index No. Z-23

History of original corner establishment:  
Original Government Survey in 1859 by H.C. Fellows.

I, William B. Cochran, do hereby certify that on the 3rd day of December, 19 89, I found evidence of the South Quarter corner of Section 36 Township 38 North, Range 11 East, Fourth Principal Meridian, as described hereon, and that from this evidence I established a new monument and accessories as described hereon to perpetuate the original location of this corner.

Dependent Resurvey in 1941 by Hugh B. Crawford. N81°35'W between Sections 36 and 1, at 39.19 chains, corner is determined from remains of an original bearing tree. Set an iron post, 3 feet long, 2 inches in diameter, with a brass cap marked; 1/4, S36, S1, 1941. From which the following bear:

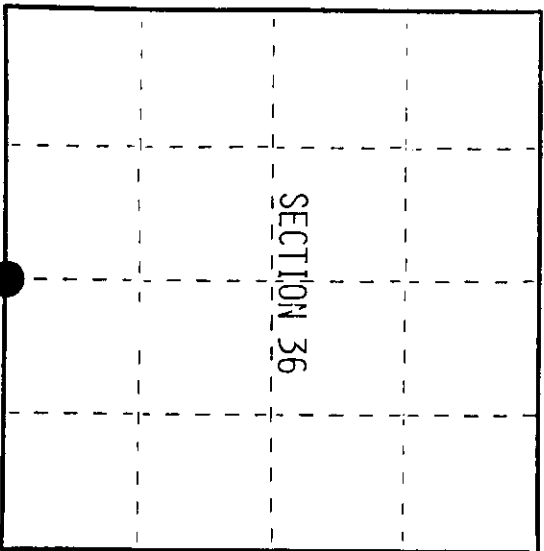
Hemlock	16"	S40°00'W	20 links(Original BT)
Hemlock	14"	N25°30'W	51 links
Maple	8"	S74°00'E	23 links

Description of corner evidence found:

Found monument as described and in place, from which the following bear;			
Spruce	7"	N62°E	17.78 feet(Local BT)
Maple	10"	S74°E	15.18 feet(GLO BT)
Hemlock	20"	S40°W	13.20 feet(Original BT)
Maple(West Frk)	12"	N14°W	10.98 feet(Local BT)
Steel Sign Post		NW	0.50 feet

Resident witnesses:

Description of monument and accessories I established to perpetuate the original location of this corner. Painted and attached bearing tree signs to all bearing trees.



● = Corner monument restored.

Dated at Hills, Wis., this 30th day of January, 19 90

Signature *William B. Cochran* Title Land Surveyor Registration No. S-1107  
(County Surveyor, Registered Land Surveyor, or other duly authorized official)

Office of Register of Deeds, County of Oneida, I hereby certify that the within instrument was filed in this office for record on the 19th day of January, 19 90 at 10 o'clock A.M.

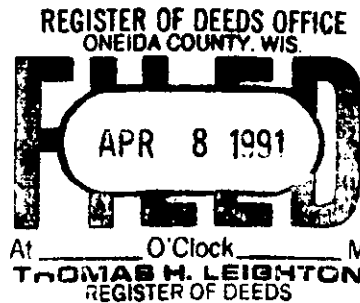
(Register of Deeds)

By Deputy

0400931187

(e) Describe any material discrepancy between the location of the corner as restored or reestablished and the location of that corner as previously restored or reestablished by distance and direction. Show the discrepancy on the plan view drawing under (d), above. Show the distances between the corner as previously restored or reestablished and (1) the corner as restored or reestablished, and (2) to at least 2 of the witness monuments shown on the drawing in (d), above.

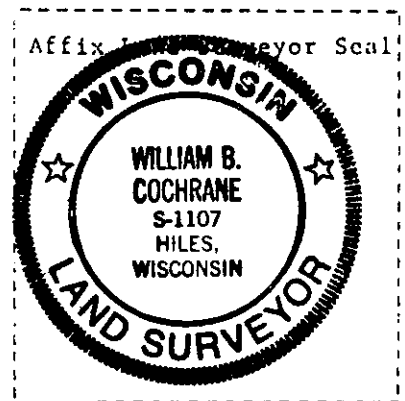
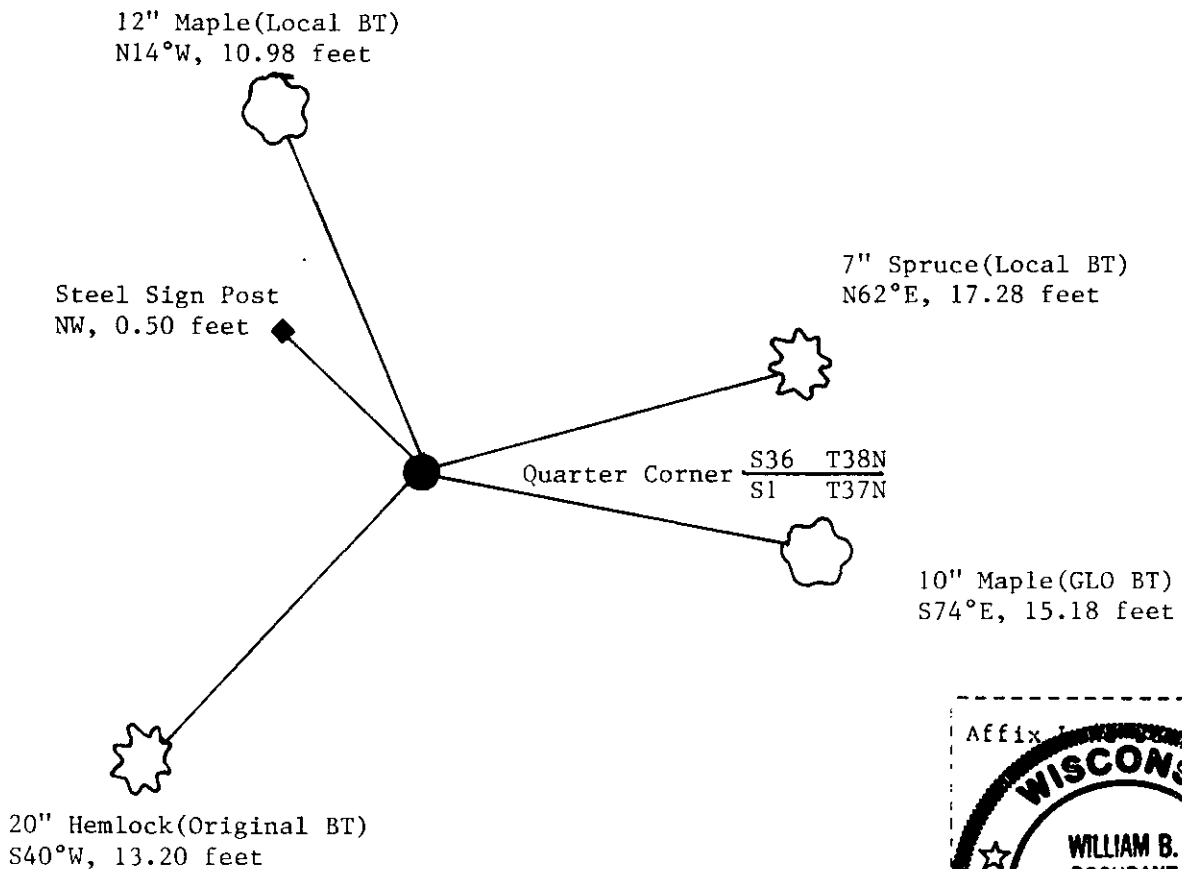
See drawing below.



(f) Was the corner restored through acceptance of (1) an obliterated evidence location, or, (2) a found perpetuated location?

Restored through acceptance of a found perpetuated location.

(g&h) Was the corner reestablished through lost corner proportionate methods? If so, show the method, including the directions and distances to other public land survey corners used as evidence or used for proportioning in determining the corner location?



(i) I, William B. Cochrane (type or print name) certify that the corner location shown on this record was determined by me or under my direction and control and that this U.S. Public Land Survey Monument Record is correct and complete to the best of my knowledge and belief.

William B. Cochrane Signature      2/6/90 Date

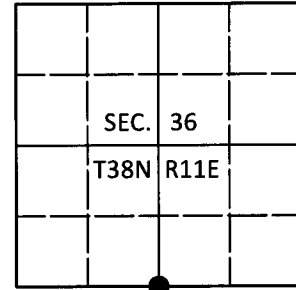
Survey requested by; Cam Yoric District Ranger      3/1/90 Date

# U.S. PUBLIC LAND SURVEY MONUMENT RECORD

Note: This form is intended and designed to fulfill all requirements of Wisconsin Administrative Code, Chapter A-E 7.08 U.S. Public Land Survey Monument Record (3)(a-i).

(a) CORNER LOCATION  
 1/4 Cor. of Secs. 1 & 36  
 Township 37 & 38 North  
 Range 11 East of the 4th P.M.  
 Town of Piehl & Three Lakes  
 County of Oneida

WISCRS - Oneida County  
 N: 196,791.03 USft  
 E: 354,455.18 USft  
 Datum: NAD 83(2011)  
 GNSS Method: RTN - Direct  
 GNSS Control: WISCORS VRS



(b) HISTORY OF ORIGINAL CORNER ESTABLISHMENT

Original Surveyor:

Original Accessories:

Date of Survey Commenced:  
 Completed:

See previous USPLS Monument Record

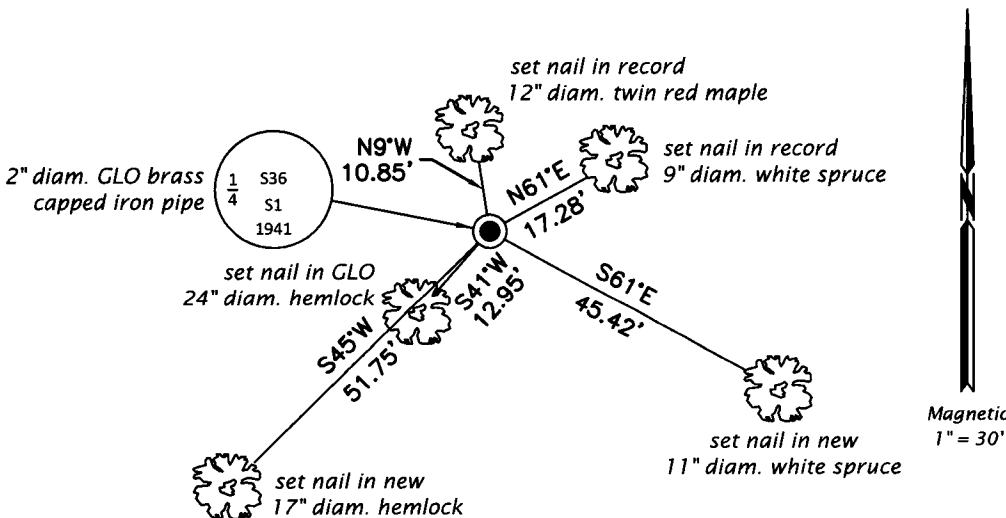
(b)(f)(g)(h) Description of monument found at this corner and if it was accepted, state all evidence (material, testimonial, occupational, plats, records, other monuments) used as a basis for accepting. If not accepted or if nothing was found, state evidence used as basis for establishing location. If re-established through lost corner proportionate methods, indicate all monuments, distances and directions used to establish. Indicate type of monument and sign post found or set.

*This is a perpetuation of a previous USPLS Monument Record by William B. Cochrane, RLS dated February 6, 1990 and filed in the office of the Oneida County Register of Deeds. A complete history of the corner can be found on the previous monument record. I accept the previous location as a true and faithful perpetuation or reestablishment of the original corner location and further perpetuate it as follows.*

*May 28, 2018: I found and accepted the record monument, a 2" diam. iron pipe with a 2-1/2" diam. GLO brass cap projecting 8" above the ground surface. The record bearing tree at S74°E is now a stump. I found or established accessories as shown below. I found a steel USFS sign post bearing Northwest 0.3 ft.*

*The coordinate value shown has been verified by at least one of the following methods: 1) comparison to a previously GPS determined published value; 2) the value is the average of two or more GPS observations at a markedly different time; 3) one or more distances were measured back to the GPS observed corner from temporary GPS observed offset locations.*

(c)(d)(e) Plan view of corner with ties to at least 4 witness monuments. If in disagreement with previously established corner, show the distances between the two corners and also indicate the ties to the disputed.

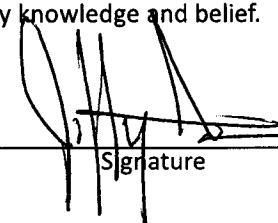


REGISTER OF DEEDS OFFICE  
 ONEIDA COUNTY  
 FILED

JUN 13 2018

KYLE J. FRANSON  
 REGISTER OF DEEDS

(i) I, Jeffrey W. Austin, Professional Land Surveyor No. S-1885, hereby certify that the corner location on this record was determined by me or under my direction and control and that this U.S. Public Land Survey Monument Record is correct and complete to the best of my knowledge and belief.

  
 Signature  
 JUNE 4, 2018  
 Date