

At \_\_\_\_\_ O'Clock \_\_\_\_\_ M  
**THOMAS H. LEIGHTON**  
REGISTER OF DEEDS

State of Wisconsin

County of Oneida

ss.

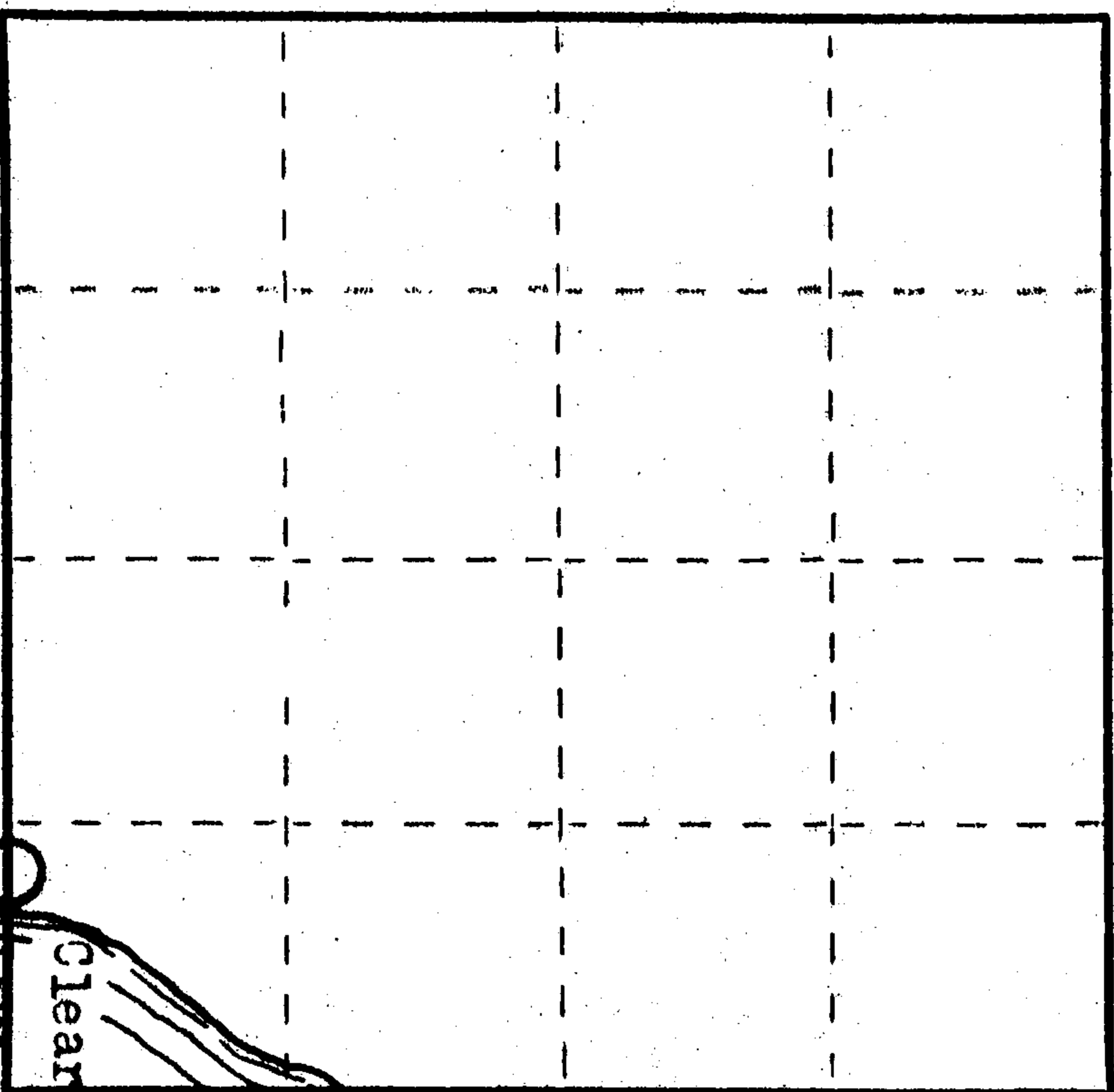
I Jerome N. Kraemer, do hereby  
certify that on the 10th day  
of July, 1978, I found  
evidence of the East Meander  
corner of Clear Lake, Section 3  
Township \_\_\_\_\_ Range  
\_\_\_\_\_ East, Fourth Principal Meridian,  
as described hereon; and that from this evidence  
I established a new monument and accessories  
as described hereon to perpetuate the original  
location of this corner.

Resident witnesses:

Robert L. Patterson

Margaret M. Burgstahler

Section 3, T39N, R1E



○ = Corner monument restored.

CERTIFIED LAND CORNER RESTORATION

History of original corner establishment:

Corner was established by Alex Anderson, Deputy Surveyor, in May of 1865 and  
was marked by a wood post, witnessed by a 10" White Birch bearing N50°W, 15 links  
and by a 10" Hemlock bearing S58°W, 22 links. Boundary was established as true  
line, not the usual random and true method of establishing such lines.

**COPY FROM  
WILDERNESS  
SURVEYING**

Index No. E 16-17  
3904030004

Description of corner evidence found:

An old cultivated field, which has since been planted in rows of conifers, has  
marked the section line since 1938 and earlier. The extreme south edge of field  
was also marked by several blazes on the trees and a post near the lake. There  
are presently several old blazes still visible. Affidavits have been signed and  
recorded in Volume 432 of Records, pages 3, 4, 5 and 6 by Robert L. Patterson and  
Margaret M. Burgstahler in reference to original section line.

Description of monument and accessories I established to perpetuate the original location of this corner.

Set a 2" diameter x 30" long Fernsten monument with a stamped 3-1/2" diameter  
cast aluminum Oneida County Cap up 12" and 31 feet west of Clear Lake. Set  
new scribed cedar post.

Made bearing trees:

P.K. nail in 6" White Birch bears N58°-08'E, 24.78 feet  
P.K. nail in 6" White Birch bears S39°-55'W, 7.50 feet  
P.K. nail in 9" Norway Pine bears N53°-08'W, 64.19 feet

Dated at Minocqua, Wis., this 9th day of March, 1979

Signature *[Signature]* Title Registered Land Surveyor Registration No. S-1148  
(County Surveyor, Registered Land Surveyor, or other duly authorized official)

Office of Register of Deeds, County of \_\_\_\_\_, I hereby certify that the within  
instrument was filed in this office for record on the \_\_\_\_\_ day of \_\_\_\_\_, 19\_\_\_\_  
at \_\_\_\_\_ o'clock \_\_\_\_\_ M.

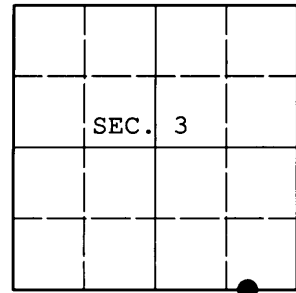
(Register of Deeds)

By \_\_\_\_\_ Deputy

**U.S. PUBLIC LAND SURVEY MONUMENT RECORD**

Note: This form is intended and designed to fulfill all requirements of Wisconsin Administrative Code, Chapter A-E 7.08 U.S. Public Land Survey Monument Record (3) (a) (b) (c) (d) (e) (f) (g) (h) (i). An additional sheet may be added if necessary to conform with said requirements.

(a) CORNER LOCATION: WISCORS (Oneida County)  
 Meander Cor. of Secs. 3 & 10 N: 256,866.054 USft  
 Township 39 North E: 122,797.247 USft  
 Range 4 East of the 4th P.M. Datum: NAD 1983(2007)  
 Town of Minocqua County of Oneida



(b) HISTORY OF ORIGINAL CORNER ESTABLISHMENT

Original Surveyor: Alexander Anderson Original Accessories:  
 Date of Survey: Commenced: May 9, 1865 birch 10" N50°W, 15 lks.  
 Completed: May 22, 1865 hemlock 10" S58°W, 22 lks.

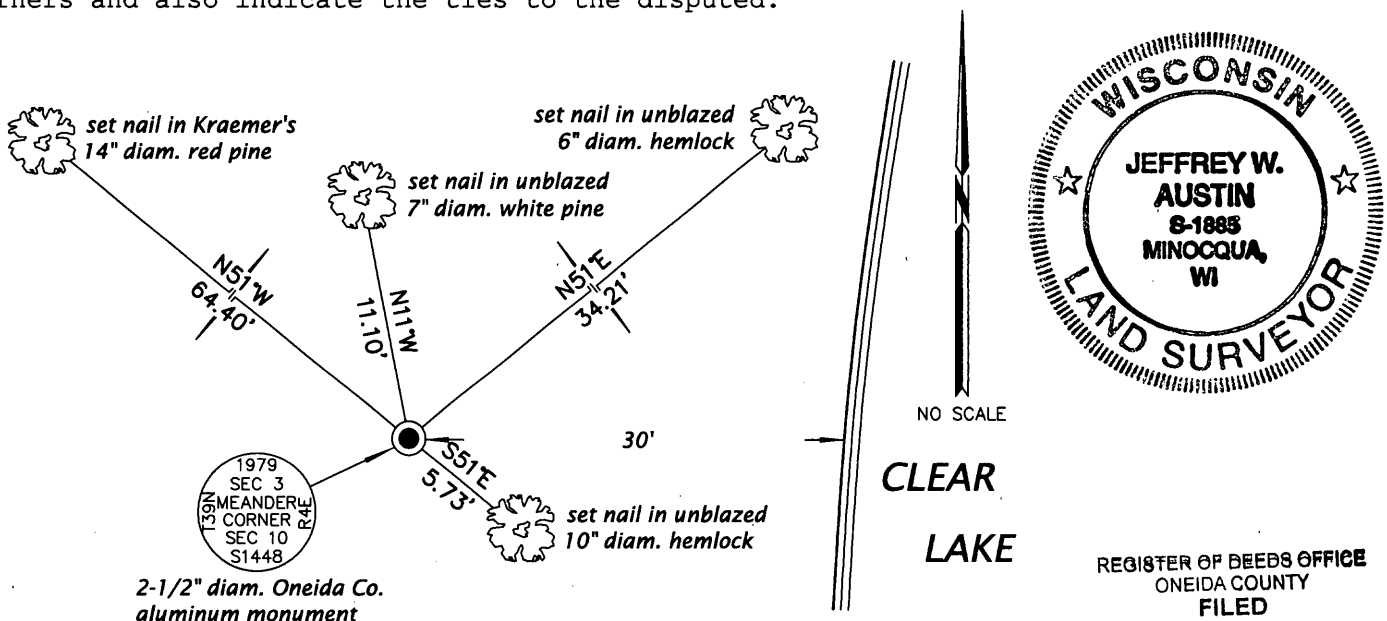
(b) (f) (g) (h) Description of monument found at this corner and if it was accepted, state all evidence (material, testimonial, occupational, plats, records, other monuments) used as a basis for accepting. If not accepted or if nothing was found, state evidence used as basis for establishing location. If re-established through lost corner proportionate methods, indicate all monuments, distances and directions used to establish. Indicate type of monument and sign post found or set.

NOTE: This is a perpetuation of a previous USPLS Monument Record by Jerome N. Kraemer, RLS dated March 9, 1979 and filed in the office of the Oneida County Register of Deeds. A complete history of the corner can be found on the previous monument record. I accept the previous location as a true and faithful perpetuation or reestablishment of the original corner location and further perpetuate it as follows.

February 18, 2013: I found and accepted Kraemer's monument, a 2-1/2" diam. aluminum pipe with 3-1/4" diam. Oneida Co. aluminum cap projecting 6" above the ground surface. Only one of Kraemer's bearing trees remain. I found or established accessories as shown below and found a white plastic sign post bearing Southeast, 1 ft. dist.

The coordinates shown were derived from offset static GPS observations referenced to a VRS control point generated by the WISCORS network.

(c) (d) (e) Plan view of corner with ties to at least 4 witness monuments. If in disagreement with previously established corner, show the distances between the two corners and also indicate the ties to the disputed.



REGISTER OF DEEDS OFFICE  
 ONEIDA COUNTY  
 FILED

APR 11 2013

AT \_\_\_\_\_ O'CLOCK \_\_\_\_\_ M  
 KYLE J. FRANSON  
 REGISTER OF DEEDS

(i) I, Jeffrey W. Austin, Registered Land Surveyor No. S-1885, hereby certify that the corner location on this record was determined by me or under my direction and control and that this U.S. Public Land Survey Monument Record is correct and complete to the best of my knowledge and belief.

MAR 26, 2013