

At _____ O'Clock _____ M
THOMAS H. LEIGHTON
FORM 98 REGISTER OF DEEDS REC

CERTIFIED LAND CORNER RESTORATION

Index No. E 13
3904040000

State of Wisconsin }
County of Oneida } ss.

I Jerome N. Kraemer, do hereby certify that on the 10th day of July, 1978, I found evidence of the southwest section corner of Section 3 Township 39, North, Range 11 East, Fourth Principal Meridian, as described hereon; and that from this evidence I established a new monument and accessories as described hereon to perpetuate the original location of this corner.

Resident witnesses:

None

History of original corner establishment:
Corner was established by Alex Anderson, Deputy Surveyor, in May of 1865, marked by a wood post, witnessed by a 1 1/2" White Pine bearing N20°W, 23 links and by a 1 1/2" Hemlock bearing S38°E, 16 links.

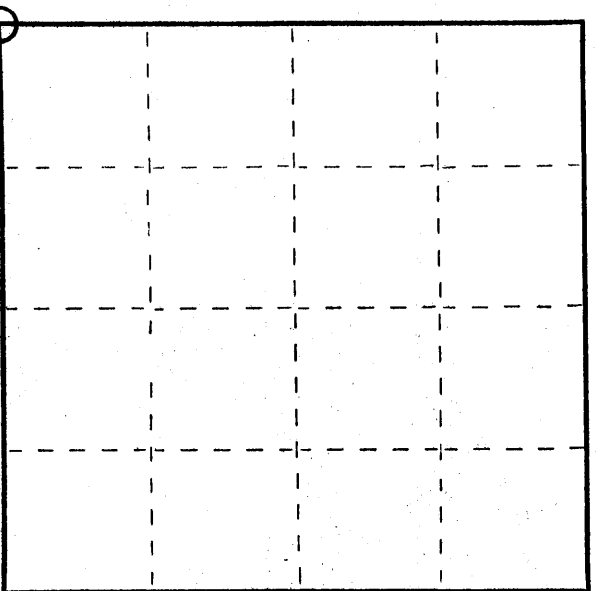
Description of corner evidence found:
No visible evidence of original bearing trees was found. Section corner has been obliterated by road construction. However, map No. 13 & 14-3-394 by Northwood's Surveyors, Inc. makes reference to the section corner and a bearing tree, a 2 1/2" Oak bearing W61°W, 31.6 feet. The bearing tree still exists.

Description of monument and accessories I established to perpetuate the original location of this corner.

Set a 2" diameter x 30" long Bernstein monument with a stamped 3-1/2" diameter cast aluminum Oneida County cap 2 inches below the ground, 18 feet west of centerline of Squaw Lake Road.

Made new bearing trees to corner:
P.K. nail in a scribed 8" White Birch bears N41°W, 38.17 feet
P.K. nail in a scribed 12" White Birch bears N41°W, 12.22 feet
P.K. nail in a scribed 8" Yellow Birch bears S50°W, 39.90 feet

**COPY FROM
WILDERNESS
SURVEYING**



Section 3, T39N, R11E

○ = Corner monument restored.

Dated at Minocqua, Wis., this 9th day of March, 1979
Signature Jerome N. Kraemer Title Registered Land Surveyor Registration No. S-11448
(County Surveyor, Registered Land Surveyor, or other duly authorized official)
Office of Register of Deeds, County of _____, I hereby certify that the within instrument was filed in this office for record on the _____ day of _____, 19____ at _____ o'clock _____ M.

(Register of Deeds)

By _____ Deputy

CERTIFIED LAND CORNER RESTORATION

State of Wisconsin }
County of Oneida } ss.

we I, Gerald B. Inman, do hereby certify that on the 12th day of June, 1981, found evidence of the Southwest corner of Section 3 Township 39 N Range 4E, Fourth Principal Meridian, as described hereon; and that ~~from this evidence~~ we established ~~a new monument and~~ accessories as described hereon to perpetuate the original location of this corner:

Description of original monument and accessories and subsequent restorations:

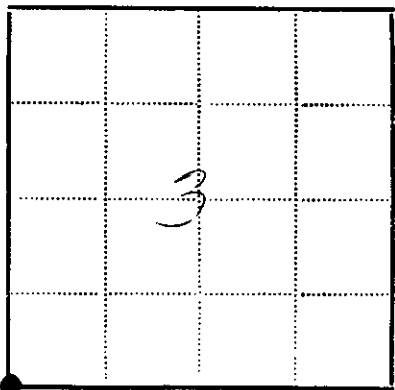
- Wood post
- 14" White Pine N20°W, 23 links
- 14" Hemlock S38°E, 46 links

Description of corner ~~evidence~~ found:

- 1-1/4" iron pipe

Description ~~of monument and~~ accessories ~~we~~ established to perpetuate the location of this corner:

- 1-1/4" iron pipe monument
- 24" Oak N61°W, 31.6'
- Iron pipe N88°18'W, 49.9 feet
- Iron pipe N17°55'E, 212.3 feet



~~Resident~~ witnesses Robert W. Conner, Jr.

Dated at Minocqua Wisconsin, this 12th day of June 1981.

Signature *Gerald B. Inman* Title R.L.S.
(County Surveyor, Registered Land Surveyor, or other duly authorized official)

Surveyors Registration No. S-891

Office of *Reg of Deeds* County of *Oneida*
I hereby certify that the within instrument was filed in this office for record on the 12 day of *June* 1981, and was filed in Book No. _____ Page No. _____ of County Records.

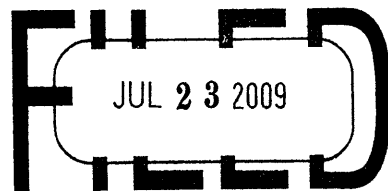
Signature *Doree V. Kuehn* Title *Reg of Deeds*
Deputy

Township _____, Range _____, Section _____, Index No. _____, Page No. _____

E-13

U.S. PUBLIC LAND SURVEY MONUMENT RECORD

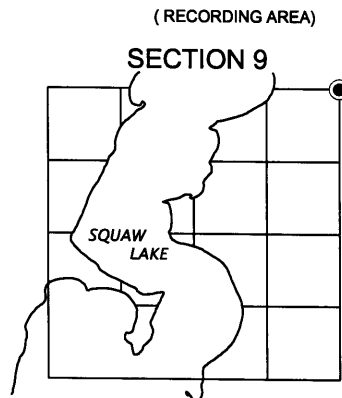
Note: This form is intended and designed to fulfill all requirements of the Wisconsin Administrative Code, Chapter A-E 7.08 U.S. Public Land Monument Record (3)(a)(b)(c)(d)(e)(f)(g)(h)(i). An additional sheet may be added if necessary to conform with said requirements.



At _____ O'Clock _____ M
THOMAS H. LEIGHTON
REGISTER OF DEEDS

(a) CORNER LOCATION: COORDINATES
NE corner of Section 9 North: N/A
Township 39 North East: N/A
Range 4 East
Town of Minocqua
County of Oneida

(b) HISTORY OF ORIGINAL CORNER ESTABLISHMENT
Original Surveyor: Alexander Anderson
Date of Survey: Commenced May 9th, 1865
Completed May 22nd, 1865
Original B.T.'S: White Pine 14" N20°W 23 links
Hemlock 14" S38°E 46 links



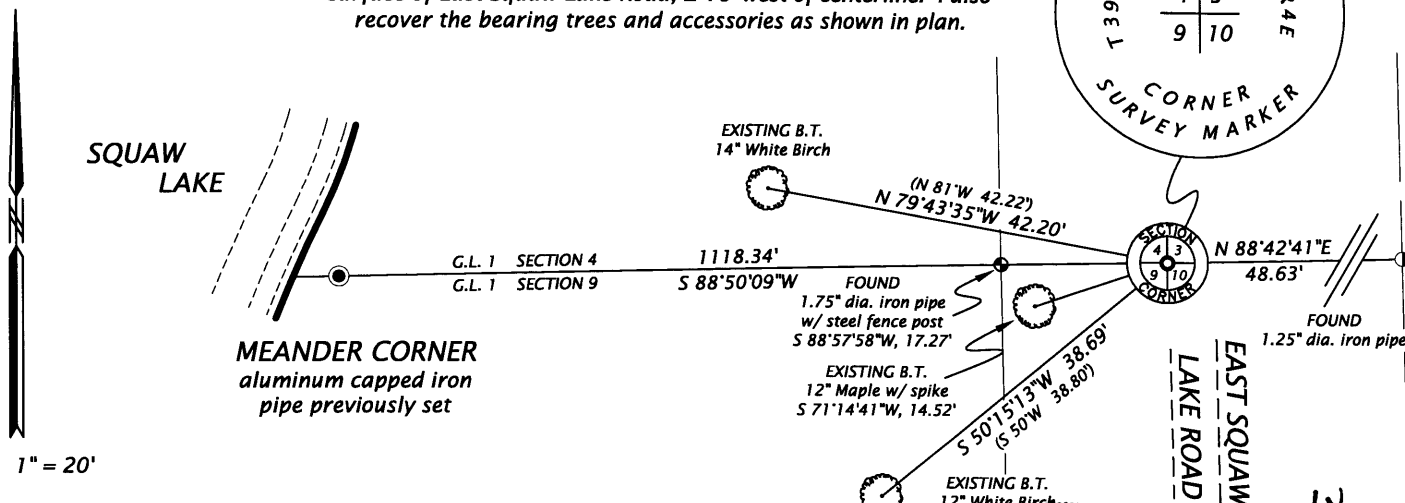
(f)(g)(h) DESCRIPTION OF MONUMENT FOUND AT THIS CORNER AND IF IT WAS ACCEPTED, STATE ALL EVIDENCE (MATERIAL, TESTIMONIAL, OCCUPATIONAL, PLATS, RECORDS, OTHER MONUMENTS) USED AS A BASIS FOR ESTABLISHING LOCATION. IF NOT ACCEPTED OF IF NOTHING WAS FOUND, STATE EVIDENCE USED AS BASIS FOR ESTABLISHING LOCATION. IF REESTABLISHED THROUGH LOST CORNER PROPORTIONATE METHODS, INDICATE ALL MONUMENTS, DISTANCES AND DIRECTIONS USED TO ESTABLISH. INDICATE TYPE OF MONUMENT AND SIGN POST FOUND OR SET.

- November 19th, 1930 - H.C. Hall, County Surveyor, per notes at the Oneida County Land Information Office (OCLIO) in H.C. Hall Book #1, on page 128, recovers "Origl NE cor. Sec. 9 identified by both origl bearings. but CDV. iron pin evidently removed for road between the bearing trees. SE brg is Hem. stp. marks OK, NW brg is 40" Hemlock (instead of W. Pine.) marks OK. Drive maple plug in road N38W .46 from Stp. This makes NW tree N20°W .22 ± As this lines up with CDV random NL we decide it is where he had the corner."
- January 5th, 1930 - H.C. Hall, County Surveyor, on map #884C recorded at the OCLIO, indicates finding the "Orig. Sec. Cor."
- July, 1966 - Northwoods Surveyors on map #C10 recorded at the OCLIO, indicates the corner and bearing trees: 36" Double Oak, N53°W, 42.1', 12" Maple, N45°E, 31.9'.
- July 10th, 1978 - Jerome N. Kraemer, S-1448, determines corner to be obliterated by road construction. Recovers Northwoods' Oak bearing tree and uses it to reestablish corner position. Sets a 2" dia. x 30" long Berntsen monument with a stamped 3.5" diameter cast aluminum Oneida County cap 2" below the ground, 18' west of centerline of Squaw Lake Road. Made new bearing trees marked with P.K. Nail: 8" White Birch, N51°W, 38.17', 12" White Birch, N81°W, 42.22', 8" Yellow Birch, S50°W, 38.80'
- June 12, 1981 - Gerald B. Inman, S-891 recovers a 1.25" dia. iron pipe for the corner and the following accessories: 24" Oak N61°W, 31.6', iron pipe N88°18'W, 49.9', iron pipe N17°55'E, 212.3". (These ties obviously from map by John H. Fisher, dated September, 1973, filed as B365)
- October 14th, 1980 - David F. McMullen, S-1340, on Certified Survey Map # 830, indicates finding an Oneida County aluminum monument with aluminum cap and the following bearing trees w/ P.K. nails: 8" White Birch, N51°W, 38.17', 12" White Birch, N81°W, 42.22', 8" Yellow Birch, S50°W, 38.80'

(c)(d)(e) PLAN VIEW OF CORNER WITH TIES TO AT LEAST 4 WITNESS MONUMENTS. IF IN DISAGREEMENT WITH PREVIOUSLY ESTABLISHED CORNER, SHOW THE DISTANCE BETWEEN THE TWO CORNERS AND ALSO INDICATE THE TIES TO THE DISPUTED CORNER.

Bearings assumed, referenced to the north line of Gov't. Lot 1, bearing S 88°50'09"W

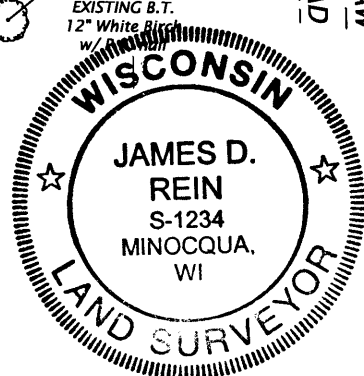
July 10, 2009 - I, James D. Rein, S-1234, recover a 2.4" dia. aluminum monument with a 3" dia. aluminum cap 5" below the surface of East Squaw Lake Road, ± 18' west of centerline. I also recover the bearing trees and accessories as shown in plan.



(i) I, JAMES D. REIN, PROFESSIONAL LAND SURVEYOR NO. S-1234 HEREBY CERTIFY THAT THE CORNER LOCATION ON THIS RECORD WAS DETERMINED BY ME OR UNDER MY DIRECTION AND CONTROL AND THAT THIS U.S. PUBLIC LAND SURVEY MONUMENT RECORD IS CORRECT AND COMPLETE TO THE BEST OF MY KNOWLEDGE AND BELIEF.

SIGNATURE

DATE



INDEX NO. E 13
3904040000