

U.S. PUBLIC LAND SURVEY MONUMENT RECORD

STATE OF WISCONSIN
ONEIDA COUNTY

Note: This form is intended and designed to fulfill all requirements of the Wisconsin Administrative Code, Chapter A-E 7.08 U.S. Public Land Monument Record (3)(a)(b)(c)(d)(e)(f)(g)(h)(i). An additional sheet may be added if necessary to conform with said requirements.

MAY 25 2017

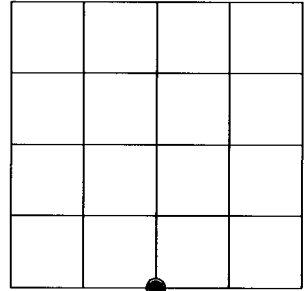
(a) CORNER LOCATION:
South Quarter Corner of Section 6
Township 39 North
Range 4 East
Town of Minocqua
County of Oneida

WISCRS - Oneida County
North: 256806.913 USft
East: 105479.135 USft
Latitude: 45° 53' 21.44033" N
Longitude: 90° 02' 00.23471" W
Datum: NAD 83(2011)
GNSS Method: RTK - Direct
GNSS Control: WISCORS VRS
Record North: 256806.952 USft
Record East: 105479.076 USft
Record Datum: NAD 83(1991)

AT _____ O'CLOCK _____ M
KYLE J. FRANSON
REGISTER OF DEEDS

(RECORDING AREA)

SECTION 6



(b) HISTORY OF ORIGINAL CORNER ESTABLISHMENT

Original Surveyor: Alex Anderson
Date of Survey: Commenced May 9th, 1865
Completed May 22nd, 1865
Original B.T.'S: Hemlock 12" N 65°W, 10 lks.
Birch 11" S 76°E 9 lks.

(f)(g)(h) DESCRIPTION OF MONUMENT FOUND AT THIS CORNER AND IF IT WAS ACCEPTED, STATE ALL EVIDENCE (MATERIAL, TESTIMONIAL, OCCUPATIONAL, PLATS, RECORD, OTHER MONUMENTS) USED AS A BASIS FOR ESTABLISHING LOCATION. IF NOT ACCEPTED OR IF NOTHING WAS FOUND, STATE EVIDENCE USED AS BASIS FOR ESTABLISHING LOCATION. IF REESTABLISHED THROUGH LOST CORNER PROPORTIONATE METHODS, INDICATE ALL MONUMENTS, DISTANCES AND DIRECTIONS USED TO ESTABLISH. INDICATE TYPE OF MONUMENT AND SIGN POST FOUND OR SET.

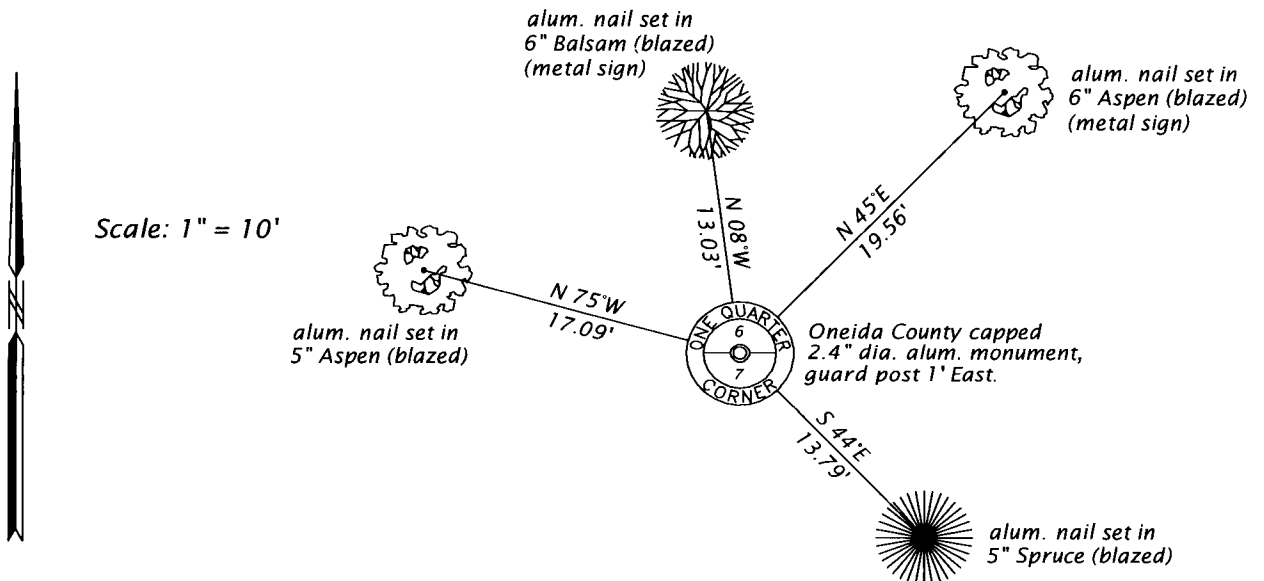
March 1963 - NEPCO surveyors, William S. Cameron and Wm. H. Stuth - maps filed in NEPCO Book 2, pages 198 and 199, shows this corner at a proportionate position.

May 14, 1993 - Michael E. Weber, RLS No. 2070, Eagle Landmark Surveying, Inc., Dwg. No. E9554-1, filed as B2775 in county surveyor's office legends this corner "ONEIDA COUNTY ALUMINUM MONUMENT SET".

April 10, 2017 - James D. Rein, PLS No. 1234, we recover an Oneida County capped 2.4" dia. aluminum extending 3" above ground level. We are unable find any evidence of the original corner, thus I accept the existing monument as a good faith reestablishment of the corner by single proportionate measurement and we make reference ties as shown in plan.

The coordinate value shown has been verified by at least one of the following methods: 1) comparison to a previously GPS determined published value; 2) the value is the average of two or more GPS observations at a markedly different time; 3) one or more distances were measured back to the GPS observed corner from temporary GPS observed offset locations.

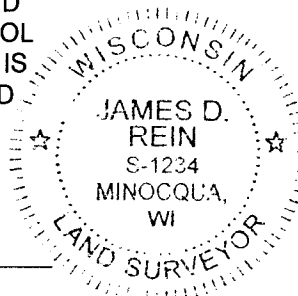
(c)(d)(e) PLAN VIEW OF CORNER WITH TIES TO AT LEAST 4 WITNESS MONUMENTS. IF IN DISAGREEMENT WITH PREVIOUSLY ESTABLISHED CORNER, SHOW THE DISTANCE BETWEEN THE TWO CORNERS AND ALSO INDICATE THE TIES TO THE DISPUTED CORNER.



(i) I, JAMES D. REIN, PROFESSIONAL LAND SURVEYOR NO. S-1234 HEREBY CERTIFY THAT THE CORNER LOCATION ON THIS RECORD WAS DETERMINED BY ME OR UNDER MY DIRECTION AND CONTROL AND THAT THIS U.S. PUBLIC LAND SURVEY MONUMENT RECORD IS CORRECT AND COMPLETE TO THE BEST OF MY KNOWLEDGE AND BELIEF.

[Handwritten Signature]
SIGNATURE

5-15-17
DATE



INDEX NO. E-3
3904060020