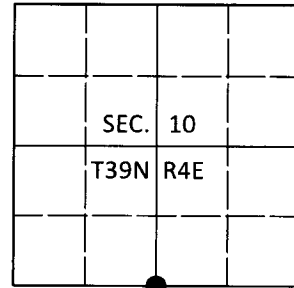


# U.S. PUBLIC LAND SURVEY MONUMENT RECORD

Note: This form is intended and designed to fulfill all requirements of Wisconsin Administrative Code, Chapter A-E 7.08 U.S. Public Land Survey Monument Record (3)(a-i).

(a) CORNER LOCATION  
 1/4 Cor. of Secs. 10 & 15  
 Township 39 North  
 Range 4 East of the 4th P.M.  
 Town of Minocqua  
 County of Oneida

WISCORS - Oneida County  
 N: 251,677.40 USft  
 E: 120,768.09 USft  
 Datum: NAD 83(2011)  
 GNSS Method: RTN - Offset  
 GNSS Control: WISCORS VRS



(b) HISTORY OF ORIGINAL CORNER ESTABLISHMENT

Original Surveyor: Alexander Anderson

Original Accessories:

Date of Survey      Commenced: May 9, 1865  
                                  Completed: May 22, 1865

Birch 10" N40°E, 20 lks.  
 Hemlock 10" S70°E, 11 lks.

(b)(f)(g)(h) Description of monument found at this corner and if it was accepted, state all evidence (material, testimonial, occupational, plats, records, other monuments) used as a basis for accepting. If not accepted or if nothing was found, state evidence used as basis for establishing location. If re-established through lost corner proportionate methods, indicate all monuments, distances and directions used to establish. Indicate type of monument and sign post found or set.

*April, 1979: On OCS Map. No. C-1107, James Marquardt, RLS identifies the corner as a 2" x 30" iron pipe set, witnessed by: 8" w. birch N16°E, 17.9'; 10" maple S56°E, 15.4'*

*May 7, 2020: I found the record monument, a 2.5" diam., 30" long iron pipe tipped almost flat in an old E-W trail. I found the record w. birch (now a stump) and the record maple as shown below. I crossed the record distances and found a distinct cavity that previously contained the iron pipe. At the corner point, I set a 2.4" diam., 30" long aluminum pipe with a 3.3" diam. Oneida Co. aluminum cap flush with the ground surface. I set a blue DEEP-1 magnet adjacent to the monument. I found or established accessories as shown below. I set a white vinyl sign post bearing Northeast, 0.7 ft.*

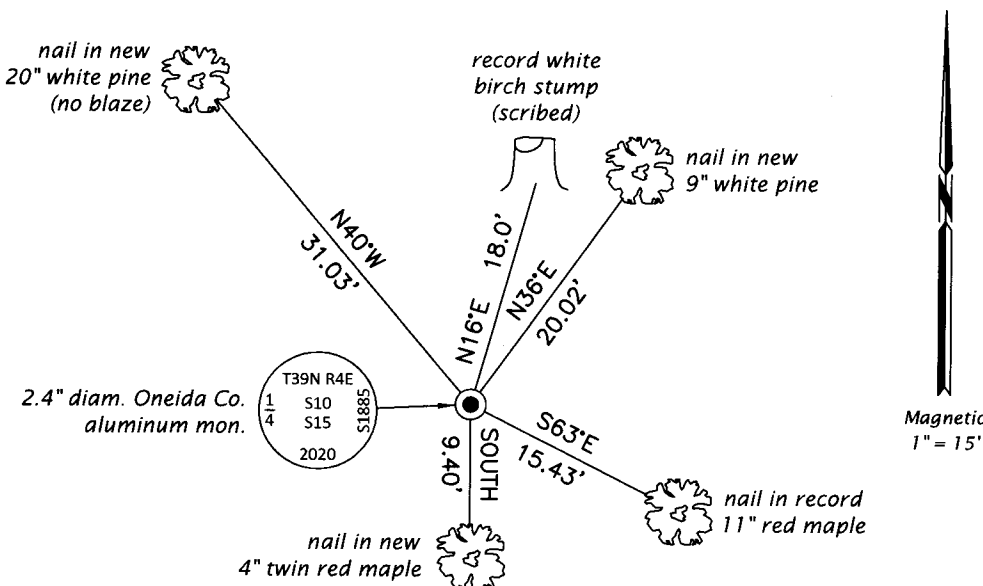
*The coordinate value shown has been verified by at least one of the following methods: 1) comparison to a previously GPS determined published value; 2) the value is the average of two or more GPS observations at a markedly different time; 3) one or more distances were measured back to the GPS observed corner from temporary GPS observed offset locations.*

REGISTER OF DEEDS OFFICE  
 ONEIDA COUNTY  
 FILED

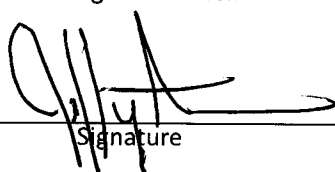
JUN 26 2020

KYLE J. FRANSON  
 REGISTER OF DEEDS

(c)(d)(e) Plan view of corner with ties to at least 4 witness monuments. If in disagreement with previously established corner, show the distances between the two corners and also indicate the ties to the disputed.



(i) I, Jeffrey W. Austin, Professional Land Surveyor No. S-1885, hereby certify that the corner location on this record was determined by me or under my direction and control and that this U.S. Public Land Survey Monument Record is correct and complete to the best of my knowledge and belief.

  
 Signature

JUNE 5, 2020  
 Date