

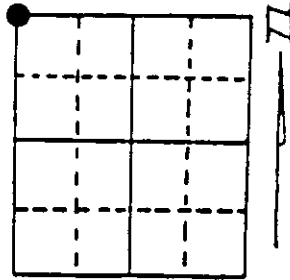
U.S. PUBLIC LAND SURVEY MONUMENT RECORD

Note: This form is intended and designed to fulfill all requirements of Wisconsin Administrative Code, Chapter A-E 7.08 U.S. Public Land Survey Monument Record (3) (a) (b) (c) (d) (e) (f) (g) (h) (i). An additional sheet may be added if necessary to conform with said requirements.

(a) Corner location: Township 39 North
 Range 5 East/West

Town/City/Village Minocqua

County Oneida



Witness Section 19

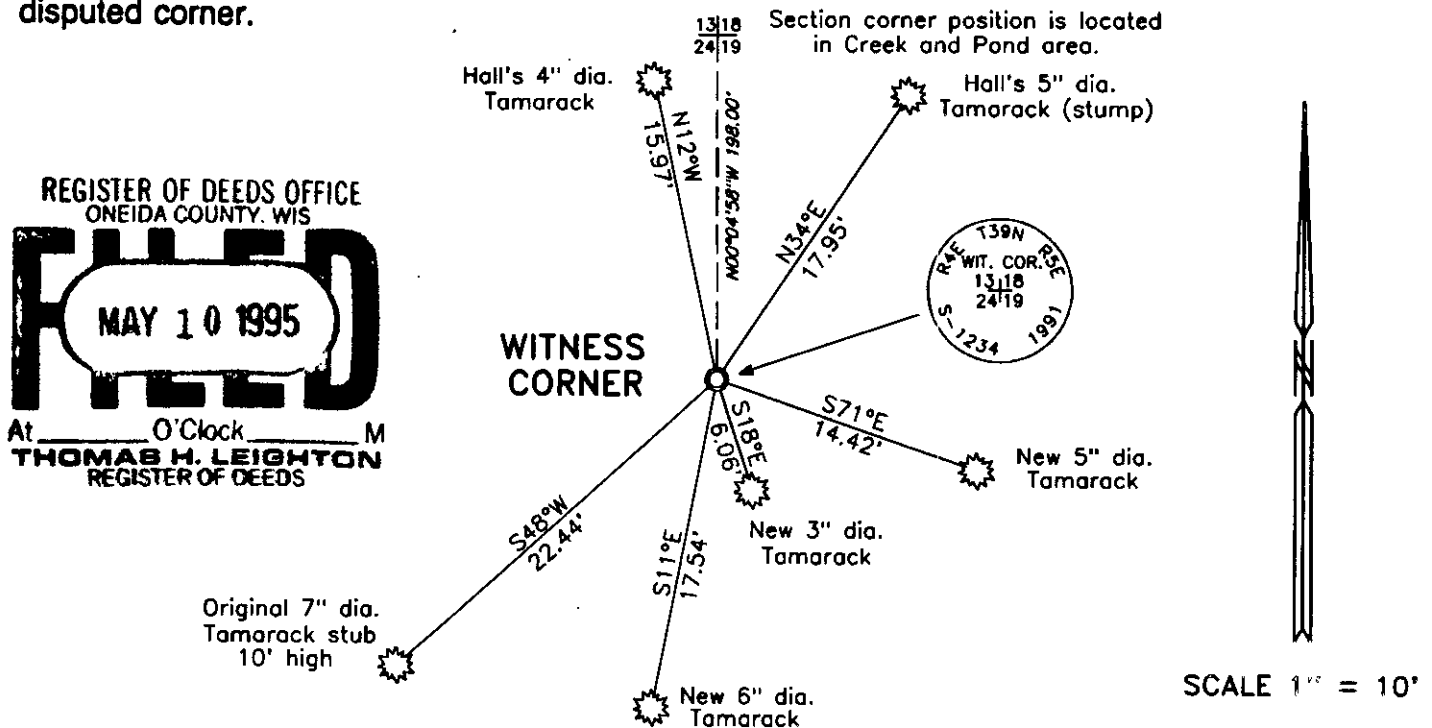
(b) (f) (g) (h) Description of monument found at this corner and if it was accepted, state all evidence (material, testimonial, occupational, plats, records, other monuments) used as a basis for accepting. If not accepted or if nothing was found, state evidence used as basis for establishing location. If reestablished through lost corner proportionate methods, indicate all monuments, distances and directions used to establish. Indicate type of monument found or set and sign post.

September, 1860: Alfred Millard, Deputy Surveyor, located section corner in Pond. Set Witness Corner 3 chains south of corner. Made bearing trees: 8" Tamarack S50°W, 34 links; 4" Tamarack S25°E, 23 links.

March, 1935: Hall, Surveyor, in CCC Book #4, found evidence of original bearing tree "SW BT ok - stub 10' hi. No other evidence to be found". Locate said Witness Corner by course & distance from the remaining bearing tree and drive a 2" x 6' perforated pipe. 2' exposed. Marked new B.T.'s: 3" Tamarack N32°E, 0.272 chains; 2" Tamarack N23°W, 0.242 chains.

April 18th, 1991: James D. Rein, Registered Land Surveyor, set a capped 2 inch diameter x 60 inch long, flange bottom aluminum monument at position of old wood post from which: an Original Tamarack bearing tree, now a 7" dia. stub 10 feet high, bears S48°W, 22.44 feet; Hall's 5" dia. Tamarack, now a stump, bears N34°E, 17.95 feet; and Hall's 4" dia. live Tamarack, marks visible, bears N12°W, 15.97 feet. Set plastic corner marker stake 1 foot Northwest of corner. See plan view for additional corner reference ties. The west quarter corner of Section 18, T39N, R5E, bears N00°04'58"W, 2630.74 feet from the section corner position in Creek and Pond area.

(c) (d) (e) Plan view of corner with ties to at least 4 witness monuments. If in disagreement with previously established corner, show the distances between the two corners and also indicate the ties to the disputed corner.



REGISTER OF DEEDS OFFICE
 ONEIDA COUNTY, WIS
FILED
 MAY 10 1995
 At _____ O'Clock _____ M
THOMAS H. LEIGHTON
 REGISTER OF DEEDS

(i) I, James D. Rein, Registered Land Surveyor No. 1234
 (type or print name) certify that the corner location on this record was determined by me or under my direction and control and that this U.S. Public Land Survey Monument Record is correct and complete to the best of my knowledge and belief.

James D. Rein Signature
 May 2nd, 1991 Date



Stamp
 3904130000

Index No. N-1