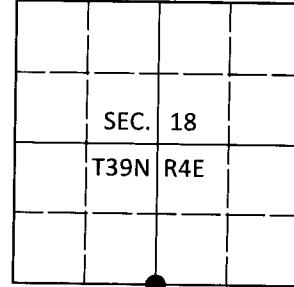


U.S. PUBLIC LAND SURVEY MONUMENT RECORD

Note: This form is intended and designed to fulfill all requirements of Wisconsin Administrative Code, Chapter A-E 7.08 U.S. Public Land Survey Monument Record (3)(a-i).

(a) CORNER LOCATION
 1/4 Cor. of Secs. 18 & 19
 Township 39 North
 Range 4 East of the 4th P.M.
 Town of Minocqua
 County of Oneida

WISCRS - Oneida County
 N: 246,476.64 USft
 E: 105,295.68 USft
 Datum: NAD83(2011)
 GNSS Method: RTN - Direct
 GNSS Control: WISCORS VRS



(b) HISTORY OF ORIGINAL CORNER ESTABLISHMENT

Original Surveyor: Alexander Anderson

Original Accessories:

Date of Survey Commenced: May 9, 1865
 Completed: May 22, 1865

cedar 8" N30°W, 9 lks.
 birch 18" S45°W, 4 lks.

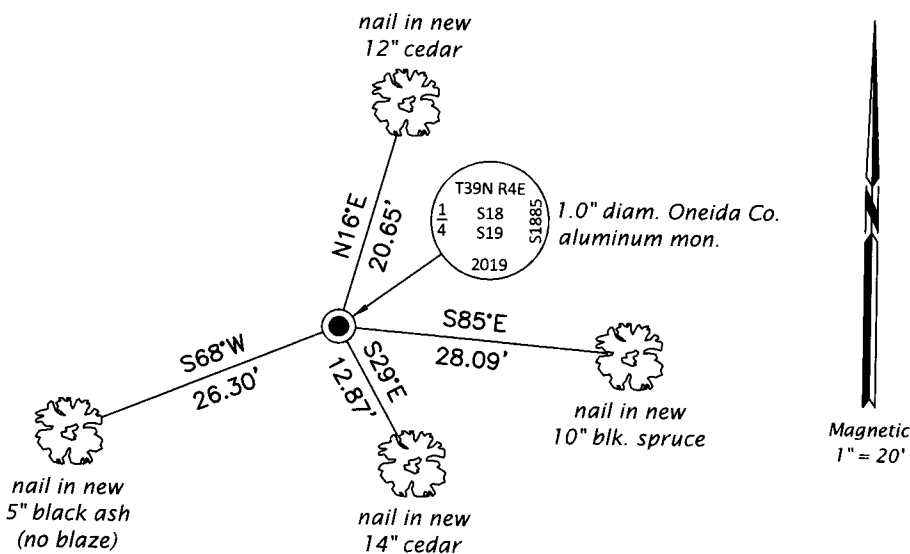
(b)(f)(g)(h) Description of monument found at this corner and if it was accepted, state all evidence (material, testimonial, occupational, plats, records, other monuments) used as a basis for accepting. If not accepted or if nothing was found, state evidence used as basis for establishing location. If re-established through lost corner proportionate methods, indicate all monuments, distances and directions used to establish. Indicate type of monument and sign post found or set.

Dec. 27, 1956: In NEPCO book 2, on page 212, a survey map by Stuth/Cameron identifies corner as "orig. 1/4 corner" with distances 40.00 ch. East and 35.20 ch. West to the section corners.

May 26, 2019: I found and accepted a 4" sq., scribed wood post. I find the distances to the section corners to be: 2643.82' East and 2392.06' West. I believe NEPCO measured or drafted the West half-mile incorrectly by 1 chain. I found no evidence of the GLO bearing trees. At the corner point, I set a 1.0" diam., 60" long aluminum pipe with a 2.5" diam. Oneida Co. aluminum cap projecting 3" above the bog surface. I established accessories as shown below. I set a white vinyl sign post bearing Northeast, 0.7 ft.

The coordinate value shown has been verified by at least one of the following methods: 1) comparison to a previously GPS determined published value; 2) the value is the average of two or more GPS observations at a markedly different time; 3) one or more distances were measured back to the GPS observed corner from temporary GPS observed offset locations.

(c)(d)(e) Plan view of corner with ties to at least 4 witness monuments. If in disagreement with previously established corner, show the distances between the two corners and also indicate the ties to the disputed.

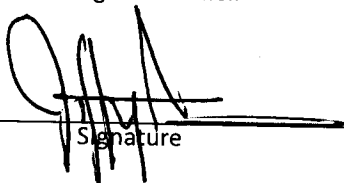


REGISTER OF DEEDS OFFICE
 ONEIDA COUNTY
 FILED

JUN 18 2019

KYLE J. FRANSON
 REGISTER OF DEEDS

(i) I, Jeffrey W. Austin, Professional Land Surveyor No. S-1885, hereby certify that the corner location on this record was determined by me or under my direction and control and that this U.S. Public Land Survey Monument Record is correct and complete to the best of my knowledge and belief.


 Signature

1 JUN 18 2019
 Date