

At \_\_\_\_\_ O'Clock \_\_\_\_\_ M

U.S. PUBLIC LAND SURVEY MONUMENT RECORD

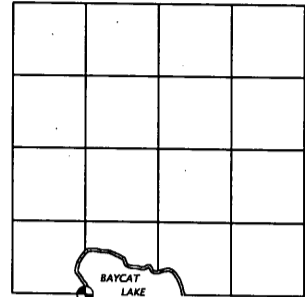
Note: This form is intended and designed to fulfill all requirements of the Wisconsin Administrative Code, Chapter A-E 7.08 U.S. Public Land Monument Record (3)(a)(b)(c)(d)(e)(f)(g)(h)(i). An additional sheet may be added if necessary to conform with said requirements.

(a) CORNER LOCATION:

West MC between S.23 & S.26  
Township 39 North  
Range 4 East  
Town of Minocqua  
County of Oneida

COORDINATES

North: 241145.5740  
East: 124433.2182  
Control Station: 1281 (by Austin 5/8/08)  
Latitude: 45°50'55.32762" N  
Longitude: 89°58'26.85798" W  
Datum: NAD 83 (1991) Method: RTK



SECTION 23

(b) HISTORY OF ORIGINAL CORNER ESTABLISHMENT

Original Surveyor: Alexander Anderson  
Date of Survey: Commenced May 9th, 1865  
Completed May 22nd, 1865

Original B.T.'S Birch 10" N27°W 17 links  
Cedar 12" S43°W 28 links

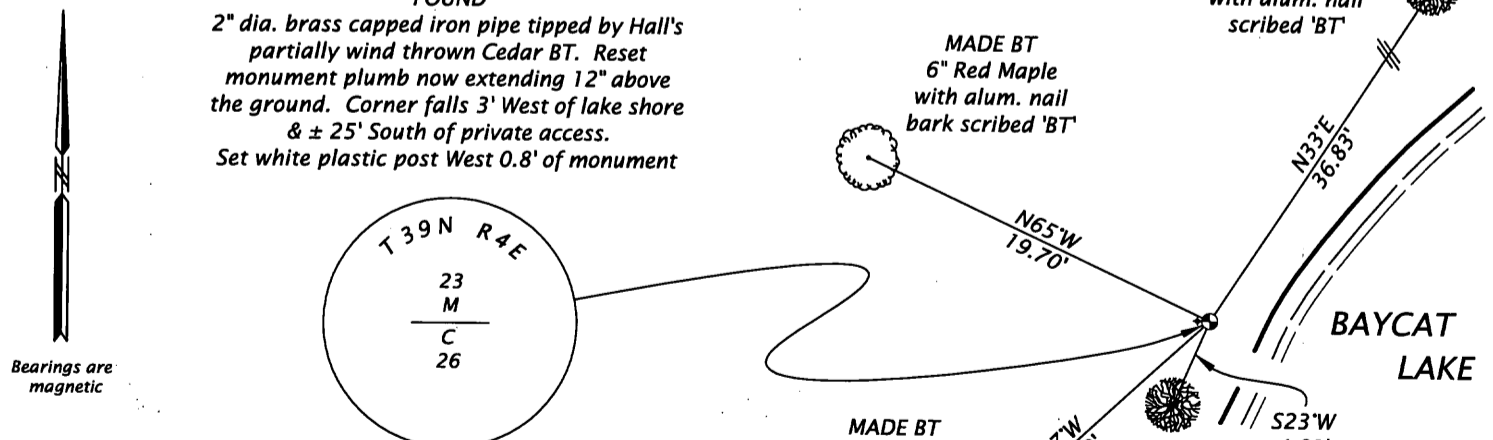
(f)(g)(h) DESCRIPTION OF MONUMENT FOUND AT THIS CORNER AND IF IT WAS ACCEPTED, STATE ALL EVIDENCE (MATERIAL, TESTIMONIAL, OCCUPATIONAL, PLATS, RECORDS, OTHER MONUMENTS) USED AS A BASIS FOR ESTABLISHING LOCATION. IF NOT ACCEPTED OF IF NOTHING WAS FOUND, STATE EVIDENCE USED AS BASIS FOR ESTABLISHING LOCATION. IF REESTABLISHED THROUGH LOST CORNER PROPORTIONATE METHODS, INDICATE ALL MONUMENTS, DISTANCES AND DIRECTIONS USED TO ESTABLISH. INDICATE TYPE OF MONUMENT AND SIGN POST FOUND OR SET.

November 18th, 1938 - R.H. Hall, Civilian Conservation Corps surveyor, per notes in CCC Book 11 pages 1 & 2 filed at the Oneida County Land Records Office indicates "Identified West MC by Origl Cedar (down) with marks visible. Set Cedar post 3' W. of water & mark: Cedar 7" S24°W .056 ch (3.96'), shoreline Tam 7" S10°E .218 ch (14.38'), shoreline Y. Birch 7" S70°E .048 ch (3.17)"

May 12th, 2008 - James D. Rein, RLS No. 1234, Recover a brass capped 2" O.D. iron pipe tipped due to Hall's partially wind thrown Cedar BT. I accept the plumb position of the monument as marking the corner location, and establish new accessories as shown in plan.

(c)(d)(e) PLAN VIEW OF CORNER WITH TIES TO AT LEAST 4 WITNESS MONUMENTS. IF IN DISAGREEMENT WITH PREVIOUSLY ESTABLISHED CORNER, SHOW THE DISTANCE BETWEEN THE TWO CORNERS AND ALSO INDICATE THE TIES TO THE DISPUTED CORNER.

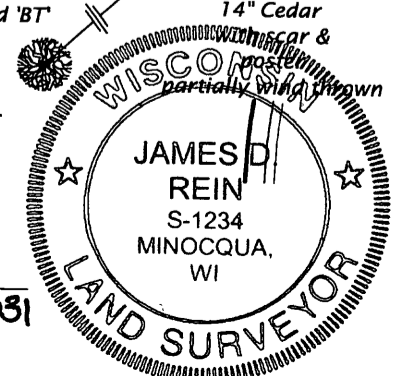
Scale 1" = 10'



(i) I, JAMES D. REIN, REGISTERED LAND SURVEYOR NO. S-1234 HEREBY CERTIFY THAT THE CORNER LOCATION ON THIS RECORD WAS DETERMINED BY ME OR UNDER MY DIRECTION AND CONTROL AND THAT THIS U.S. PUBLIC LAND SURVEY MONUMENT RECORD IS CORRECT AND COMPLETE TO THE BEST OF MY KNOWLEDGE AND BELIEF.

SIGNATURE [Handwritten Signature]

DATE 6/03/08  
3904230031



INDEX NO. R-17118