

At _____ O'Clock _____ M

U.S. PUBLIC LAND SURVEY MONUMENT RECORD

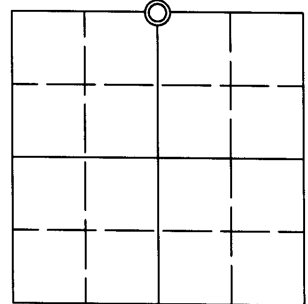
Note: This form is intended and designed to fulfill all requirements of the Wisconsin Administrative Code, Chapter A-E 7.08 U.S. Public Land Monument Record (3)(a)(b)(c)(d)(e)(f)(g)(h)(i). An additional sheet may be added if necessary to conform with said requirements.

(a) CORNER LOCATION:

North 1/4 corner of Section 36
Township 39 North
Range 4 East
Town of Minocqua
County of Oneida

O. C. COORDINATES

North: 235953.1863
East: 131310.7231
Control Station: O.C. 207
Latitude: 45°49'03.59887"N
Longitude: 89°56'30.36164"W
Datum: NAD 83 (91) Method: RTK



(b) HISTORY OF ORIGINAL CORNER ESTABLISHMENT

Original Surveyor: Alex Anderson, Deputy Surveyor
Date of Survey: Commenced - May 9th, 1865
Completed - May 22nd, 1865

Original B.T.'S: Tamarac 9" S36°E, 9 links
Tamarac 10" N3°W, 16 links

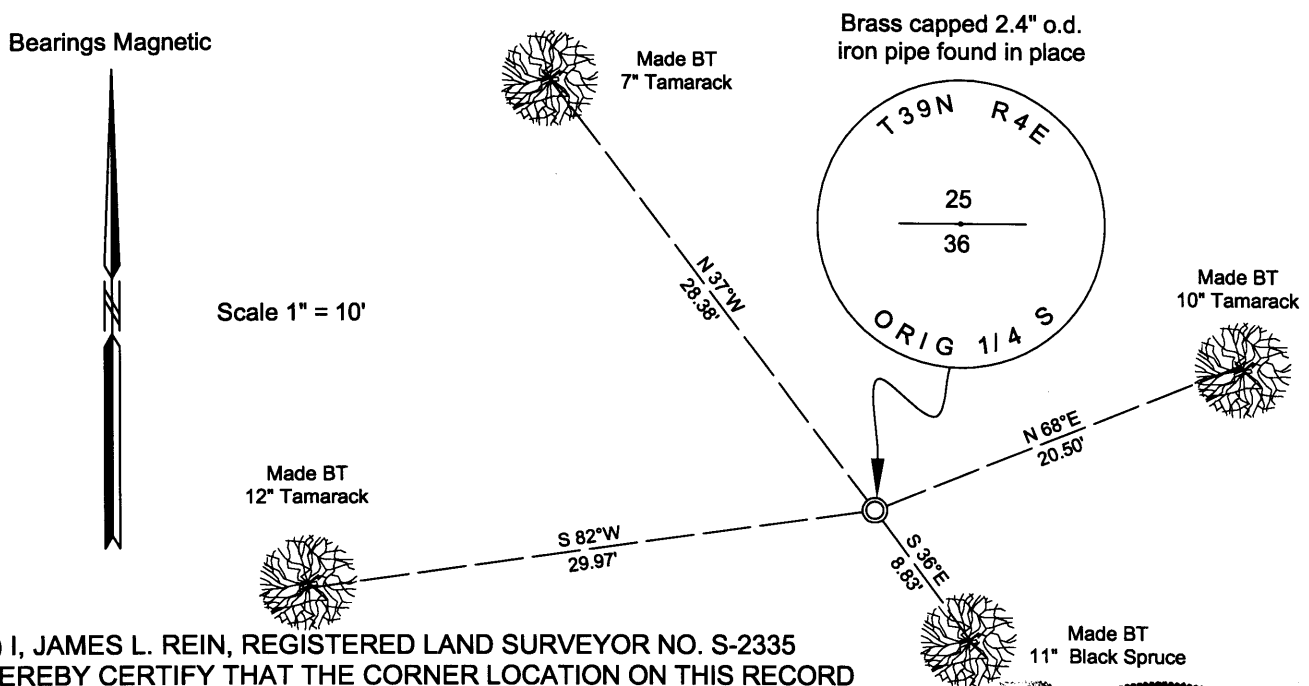
SECTION 36

(f)(g)(h) DESCRIPTION OF MONUMENT FOUND AT THIS CORNER AND IF IT WAS ACCEPTED, STATE ALL EVIDENCE (MATERIAL, TESTIMONIAL, OCCUPATIONAL, PLATS, RECORDS, OTHER MONUMENTS) USED AS A BASIS FOR ESTABLISHING LOCATION. IF NOT ACCEPTED OF IF NOTHING WAS FOUND, STATE EVIDENCE USED AS BASIS FOR ESTABLISHING LOCATION. IF REESTABLISHED THROUGH LOST CORNER PROPORTIONATE METHODS, INDICATE ALL MONUMENTS, DISTANCES AND DIRECTIONS USED TO ESTABLISH. INDICATE TYPE OF MONUMENT AND SIGN POST FOUND OR SET.

December 21, 1936 - Ray H. Hall, CC Camp 75-S Surveyor, Book 7, Page 22 - Set county monument, 10" exposed in place of iron pipe at original North 1/4 S. 36, cut-off dead north BT 5' high. Var. 0° new Tamarack 3", S59°W, 0.236 chains.

February 17, 2009 - James D. Rein, RLS No. 1234: We recover Hall's brass capped 2.4" outside diameter iron pipe extending 5 inches above ground in sparse black spruce-tamarack mix swamp. We do not replace the monument because it is in good condition. Made new bearing trees with measurements to aluminum nails set in the center of the root crown on side of trees. Set plastic post 1 foot north of corner monument.

(c)(d)(e) PLAN VIEW OF CORNER WITH TIES TO AT LEAST 4 WITNESS MONUMENTS. IF IN DISAGREEMENT WITH PREVIOUSLY ESTABLISHED CORNER, SHOW THE DISTANCE BETWEEN THE TWO CORNERS AND ALSO INDICATE THE TIES TO THE DISPUTED CORNER.



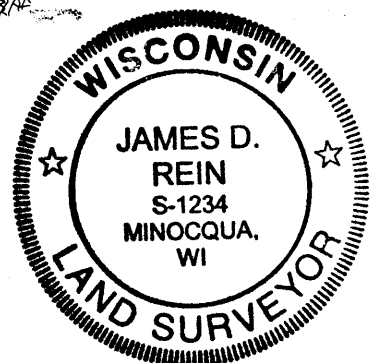
(i) I, JAMES L. REIN, REGISTERED LAND SURVEYOR NO. S-2335 HEREBY CERTIFY THAT THE CORNER LOCATION ON THIS RECORD WAS DETERMINED BY ME OR UNDER MY DIRECTION AND CONTROL AND THAT THIS U.S. PUBLIC LAND SURVEY MONUMENT RECORD IS CORRECT AND COMPLETE TO THE BEST OF MY KNOWLEDGE AND BELIEF.

SIGNATURE

3904250020

DATE

MARCH 3RD, 2009
3904250040



INDEX NO. V-23