

JUN 12 2023

KYLE J. FRANSON  
REGISTER OF DEEDS

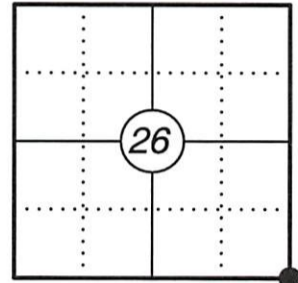
# U.S. PUBLIC LAND SURVEY MONUMENT RECORD

This form is intended and designed to fulfill all requirements of Wisconsin Administrative Code, Chapter A-E 7.08 U.S. Public Land Survey Monument Record (3) (a)(b)(c)(d)(e)(f)(g)(h)(i). An additional sheet may be added if necessary to confirm with said requirements.

**(a) Corner Location:**

SE Corner Section 26	WISCRS - Oneida County
Township 39 North	N: 235834.46
Range 4 East	E: 128582.18
Town of Minocqua	Datum: NAD 83 (2011)
County of Oneida	GNSS Method: RTK Direct
	GNSS Control: WISCRS VRS

Corner ID: 3904260000



**(b) History of Original Corner:**

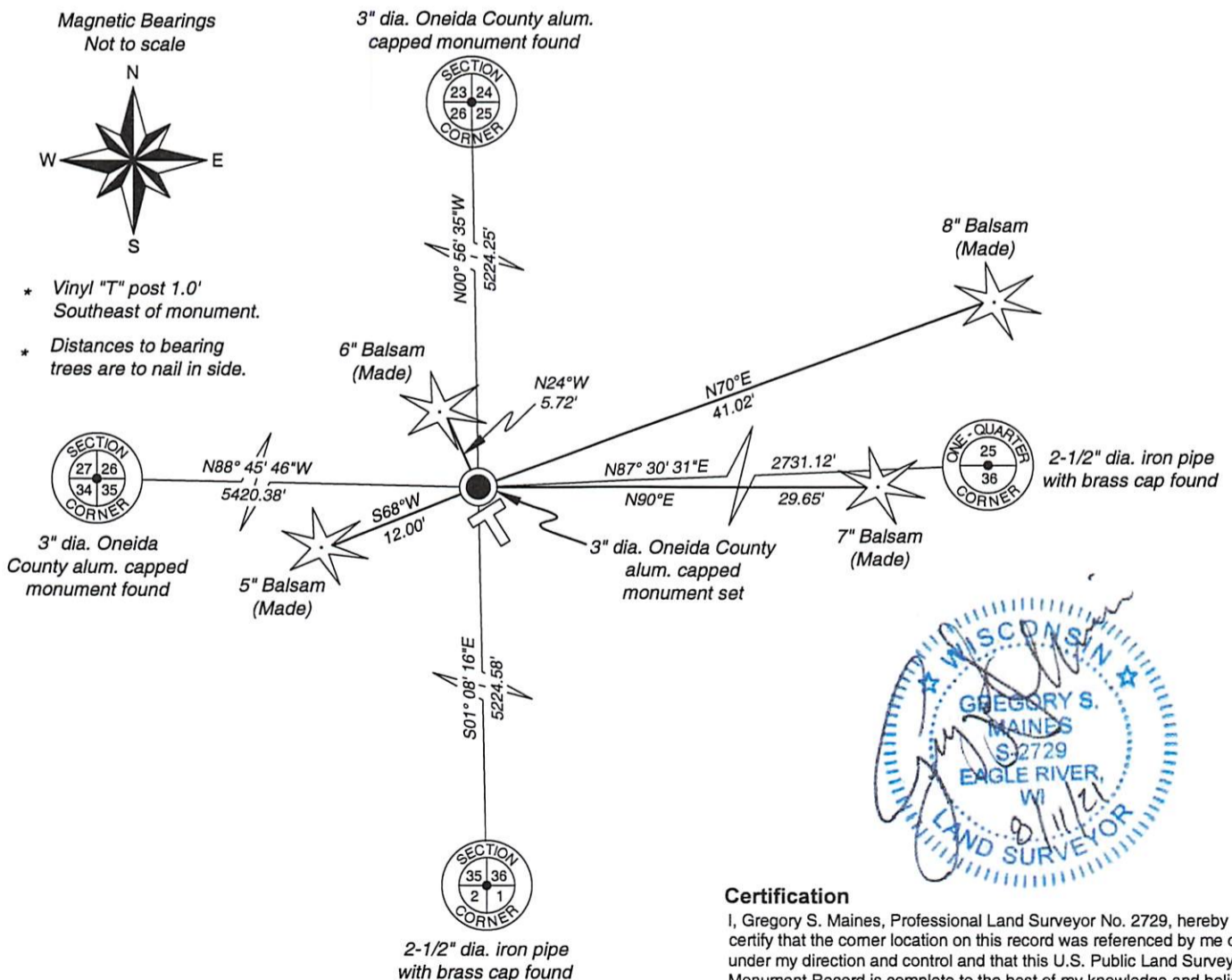
Original Surveyor: Alex Anderson	Original B.T.'s: 10" Hemlock - S 47° E, 4 Links
Date of Survey: May 9 to May 22, 1865	18" Birch - S 60° W, 10 Links

**(f)(g)(h) Description of monument found at this corner and if it was accepted, state all evidence (material, testimonial, occupational, plats, records, other monuments) used as a basis for establishing location. If reestablishing through lost corner proportionate methods, indicate all monuments, distances, and directions used to establish. Indicate type of monument and sign post found or set.**

12/11/1934 - Ray H. Hall, McDonald and Jazwiak ran west from N 1/4 Corner of Section 36 to the section corner. They could not find the section corner. (See CCC 3, Page 155)

04/06/2021 - I searched for and found no evidence of the original corner or bearing trees. I positioned the corner by double proportion between the Southwest Corner of Section 26 and the S 1/4 Corner of Section 25 and the Northeast Corner of Section 26 and the Southeast Corner of Section 35. I set a 3" dia. Oneida County aluminum capped monument stamped to identify the corner and made four bearing trees to witness the corner as shown below.

**(c)(d)(e) Plan view of corner with ties to at least four witnesses. If in disagreement with previously established corner, show the distances between the two corners and also indicate the tie to the disputed corner.**



Index No.: V-21