

U.S. PUBLIC LAND SURVEY MONUMENT RECORD
At O'Clock
THOMAS/LEIGHTON
REGISTER OF DEEDS

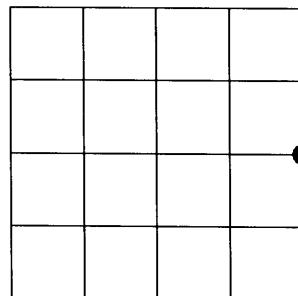
Note: This form is intended and designed to fulfill all requirements of the Wisconsin Administrative Code, Chapter A-E 7.08 U.S. Public Land Monument Record (3)(a)(b)(c)(d)(e)(f)(g)(h)(i). An additional sheet may be added if necessary to conform with said requirements.

(a) CORNER LOCATION:

East Quarter corner of Section 33
Township 39 North
Range 4 East
Town of Minocqua
County of Oneida
Wisconsin

COORDINATES

North: 233251.2655
East: 118197.2014
Control Station: MINOCQUA C GPS - 207S
Latitude: 45° 49' 29.64181" N
Longitude: 89° 58' 58.63120" W
Datum: Oneida County Grid (NAD 83 - 1991)
Method: Real Time Kinetic GPS (Direct)



SECTION 33

(b) HISTORY OF ORIGINAL CORNER ESTABLISHMENT

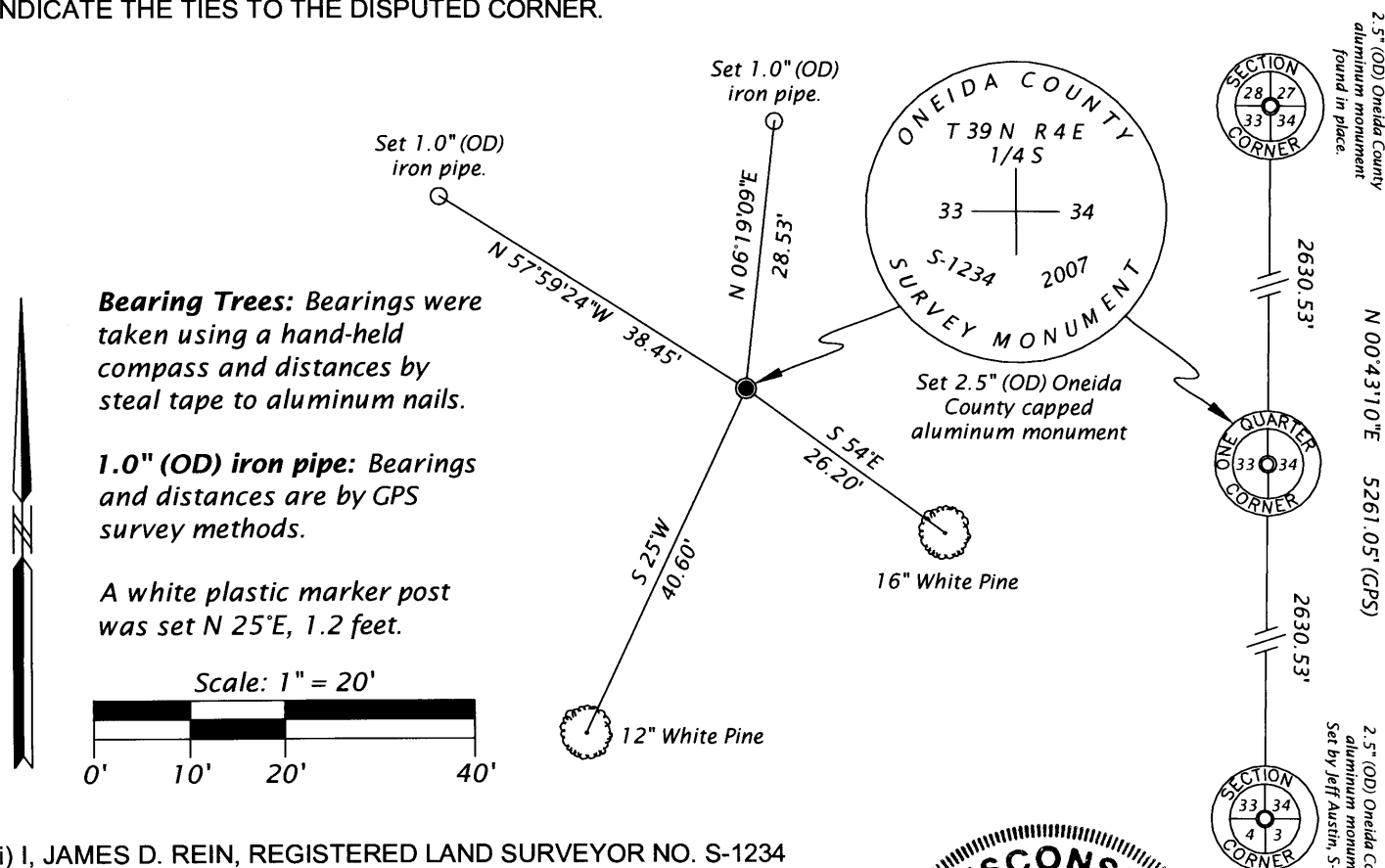
Original Surveyor: Alexander Anderson - Set 1/4 Section post
Date of Survey: Commenced - May 9, 1865
Completed - May 22, 1865

Original B.T.'S - 14" Yellow Pine, N 6°W, 12 links
24" Yellow Pine, N 53°E, 11 links

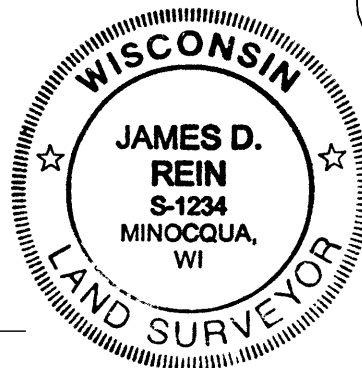
(f)(g)(h) DESCRIPTION OF MONUMENT FOUND AT THIS CORNER AND IF IT WAS ACCEPTED, STATE ALL EVIDENCE (MATERIAL, TESTIMONIAL, OCCUPATIONAL, PLATS, RECORDS, OTHER MONUMENTS) USED AS A BASIS FOR ESTABLISHING LOCATION. IF NOT ACCEPTED OF IF NOTHING WAS FOUND, STATE EVIDENCE USED AS BASIS FOR ESTABLISHING LOCATION. IF REESTABLISHED THROUGH LOST CORNER PROPORTIONATE METHODS, INDICATE ALL MONUMENTS, DISTANCES AND DIRECTIONS USED TO ESTABLISH. INDICATE TYPE OF MONUMENT AND SIGN POST FOUND OR SET.

February 2007 - I, James D. Rein, searched for and found no evidence of existing corner or accessories. By single proportionate methods I SET a 2.5" (OD) Oneida County capped aluminum monument and made two (2) new BTs and set two (2) new reference monuments as noted on the sketch below.

(c)(d)(e) PLAN VIEW OF CORNER WITH TIES TO AT LEAST 4 WITNESS MONUMENTS. IF IN DISAGREEMENT WITH PREVIOUSLY ESTABLISHED CORNER, SHOW THE DISTANCE BETWEEN THE TWO CORNERS AND ALSO INDICATE THE TIES TO THE DISPUTED CORNER.



(i) I, JAMES D. REIN, REGISTERED LAND SURVEYOR NO. S-1234 HEREBY CERTIFY THAT THE CORNER LOCATION ON THIS RECORD WAS DETERMINED BY ME OR UNDER MY DIRECTION AND CONTROL AND THAT THIS U.S. PUBLIC LAND SURVEY MONUMENT RECORD IS CORRECT AND COMPLETE TO THE BEST OF MY KNOWLEDGE AND BELIEF



SIGNATURE

DATE

3/26/07

3904332000

INDEX NO. X-13