

JUN 12 2023

KYLE J. FRANSON
REGISTER OF DEEDS

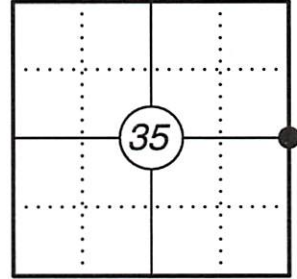
U.S. PUBLIC LAND SURVEY MONUMENT RECORD

This form is intended and designed to fulfill all requirements of Wisconsin Administrative Code, Chapter A-E 7.08 U.S. Public Land Survey Monument Record (3) (a)(b)(c)(d)(e)(f)(g)(h)(i). An additional sheet may be added if necessary to confirm with said requirements.

(a) Corner Location:

E 1/4 Corner Section 35	WISCORS - Oneida County
Township 39 North	N: 233222.69
Range 4 East	E: 128634.05
Town of Minocqua	Datum: NAD 83 (2011)
County of Oneida	GNSS Method: RTK Direct
	GNSS Control: WISCORS VRS

Corner ID: 3904352000



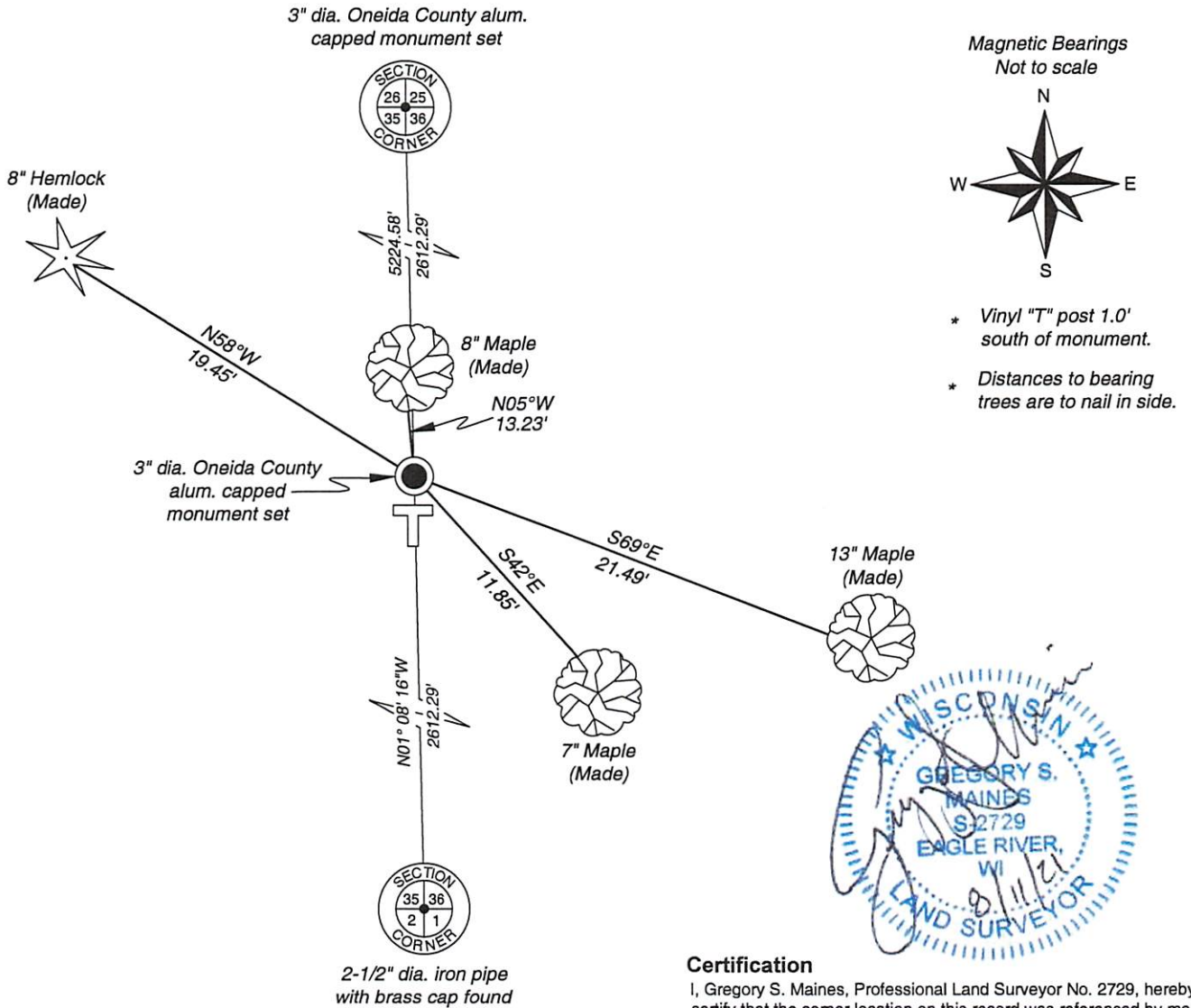
(b) History of Original Corner:

Original Surveyor: Alex Anderson	Original B.T.'s: 10" Hemlock - S 14° E, 34 Links
Date of Survey: May 9 to May 22, 1865	10" Birch - S 20° W, 20 Links

(f)(g)(h) Description of monument found at this corner and if it was accepted, state all evidence (material, testimonial, occupational, plats, records, other monuments) used as a basis for establishing location. If reestablishing through lost corner proportionate methods, indicate all monuments, distances, and directions used to establish. Indicate type of monument and sign post found or set.

04/06/2021 - I searched for and found no evidence of the original corner or bearing trees. I positioned the corner by single proportion online and midway between the southeast and northeast corners of Section 35 and set a 3" dia. Oneida County aluminum capped monument stamped to identify the corner and made four bearing trees to witness the corner as shown below.

(c)(d)(e) Plan view of corner with ties to at least four witnesses. If in disagreement with previously established corner, show the distances between the two corners and also indicate the tie to the disputed corner.



Certification

I, Gregory S. Maines, Professional Land Surveyor No. 2729, hereby certify that the corner location on this record was referenced by me or under my direction and control and that this U.S. Public Land Survey Monument Record is complete to the best of my knowledge and belief. REF: 2020054

Index No.: X-21