

Stock No. 26273

# U. S. PUBLIC LAND SURVEY MONUMENT RECORD

**INSTRUCTIONS :**

This record shall show the location of the corner and shall include all of the following nine elements (a through i).

- (a) Identify the corner by reference to the U.S. public land survey system.

**CORNER HISTORY**

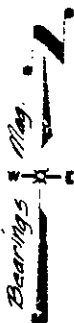
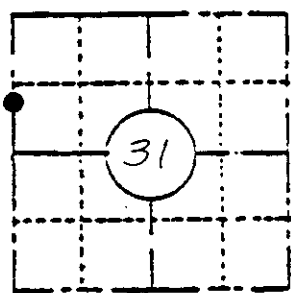
Sept. 21, 1860 - Alfred Millard, Deputy Surveyor set meander post.

Original bearing trees:

- Yellow Pine 12" N70°E, 19 lks (12.54 feet)
- Yellow Pine 12" N44°W, 12 lks (7.92 feet)

1960 - Nekoosa Papers, Inc. survey notes describe corner being monumented by concrete.

Section 31  
T39N, R5E



**LOCATION SKETCH**

(Location of landmark indicated by "●")

Compared with all record data and accepted as correct.

*Robert H. Vinal* 18 JAN 84  
Oneida County Surveyor date

- (b) Describe any record evidence, monument evidence, occupational evidence, testimonial evidence or any other material evidence you considered, and whether the monument was found or placed.

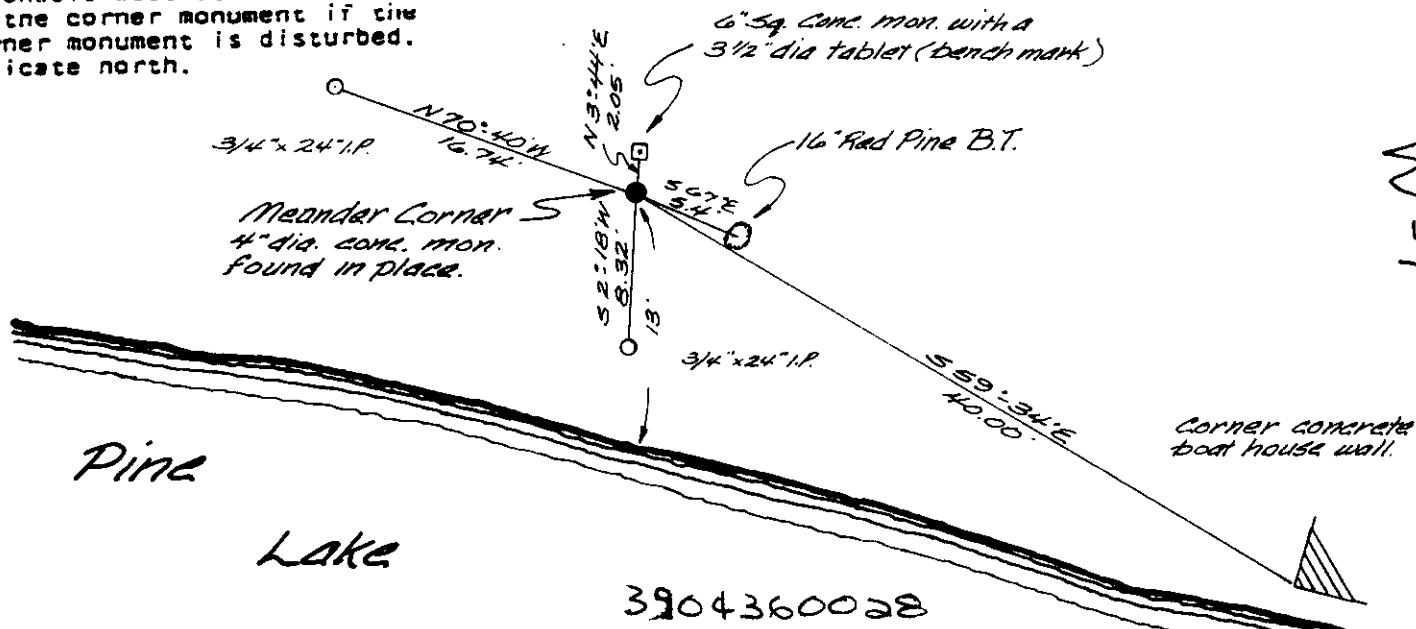
Sept. 30th, 1983 - Found a 4" diameter concrete monument extending 4" above ground, witnessed by a 16" Red Pine bearing S67°E, 5.4 feet. Remains of an old Pine Stump (badly decayed) bears N70°E, 14 feet and N44°W, 6.7 feet.

- (c) In the plan view drawing below, provide reference ties to at least 4 witness monuments, or, if the location is within a municipality, to at least 2 witness monuments. (Witness monuments shall be made of concrete, natural stone, iron or other equally durable material, except wood.) Describe witness monuments.

Scale 1"=10'

- (d) Show a plan view drawing depicting the relevant monuments and reference ties which is sufficient in detail to enable accurate relocation of the corner monument if the corner monument is disturbed. Indicate north.

North orientation is as indicated above.



3904360028

(e) Describe any material discrepancy between the location of the corner as restored or reestablished and the location of that corner as previously restored or reestablished by distance and direction. Show the discrepancy on the plan view drawing under (d), above. Show the distances between the corner as previously restored or reestablished and (1) the corner as restored or reestablished, and (2) to at least 2 of the witness monuments shown on the drawing in (d), above.

NONE

(f) Was the corner restored through acceptance of (1) an obliterated evidence location, or, (2) a found perpetuated location?

The corner was restored through acceptance of a found perpetuated location

(g&h) Was the corner reestablished through lost corner proportionate methods? If so, show the method, including the directions and distances to other public land survey corners used as evidence or used for proportioning in determining the corner location?

No

REGISTERS OFFICE ( )  
Oncida County, Wis. )

Received for Record the 18th day of  
January A.D. 1984 at  
10:00 o'clock A M. and recorded in  
Vol. \_\_\_\_\_ on page \_\_\_\_\_  
Doris Terage Kuehn  
Register

Affix Land Surveyor Seal

(i) I, JAMES D. REIN, Registered Surveyor  
(type or print name) certify that the corner location shown  
on this record was determined by me or under my direction and  
control and that this U.S. Public Land Survey Monument Record  
is correct and complete to the best of my knowledge and belief.

Signature James D Rein Date 12/14/1983

