

# U.S. PUBLIC LAND SURVEY MONUMENT RECORD

REGISTER OF DEEDS OFFICE  
ONEIDA COUNTY  
FILED

OCT 20 2022

Note: This form is intended and designed to fulfill all requirements of the Wisconsin Administrative Code, Chapter A-E 7.08 U.S. Public Land Monument Record (3)(a)(b)(c)(d)(e)(f)(g)(h)(i). An additional sheet may be added if necessary to conform with said requirements.

KYLE J. FRANSON  
REGISTER OF DEEDS

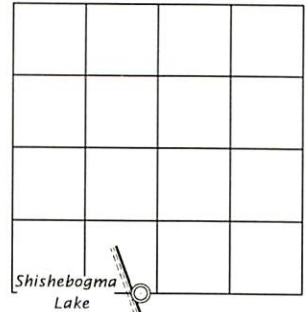
**(a) CORNER LOCATION:**

Witness Meander Corner of Section 2  
Township 39 North  
Range 5 East  
Town of Minocqua  
County of Oneida

North:  
East:  
Datum:  
GNSS Method:  
GNSS Control:

(RECORDING AREA)

**SECTION 2**



**(b) HISTORY OF ORIGINAL CORNER ESTABLISHMENT**

Original Surveyor: Alex Anderson  
Date of Survey: Commenced Septembet 15, 1863  
Completed September 20, 1863  
Original B.T.'S: white pine, 12", N 30°E, 438 links  
no other trees near

(f)(g)(h) DESCRIPTION OF MONUMENT FOUND AT THIS CORNER AND IF IT WAS ACCEPTED, STATE ALL EVIDENCE (MATERIAL, TESTIMONIAL, OCCUPATIONAL, PLATS, RECORD, OTHER MONUMENTS) USED AS A BASIS FOR ESTABLISHING LOCATION. IF NOT ACCEPTED OR IF NOTHING WAS FOUND, STATE EVIDENCE USED AS BASIS FOR ESTABLISHING LOCATION. IF REESTABLISHED THROUGH LOST CORNER PROPORTIONATE METHODS, INDICATE ALL MONUMENTS, DISTANCES AND DIRECTIONS USED TO ESTABLISH. INDICATE TYPE OF MONUMENT AND SIGN POST FOUND OR SET.

October 2, 1914 - D. H. Vaughan, County Surveyor (Old Field Book 7, page 154) went MC west of 1/4 post, found where Nutter of Wausau located MC. Also found where the W. Pine BT stood and it checked up ok. Set cedar post and made new bearing, Y. Pine 14" N 66 1/2 E, 31 lks. (20.46') \*\*Vaughn's plat MAP OF EVENSONS POINT shows distance at 31 1/2 lks. (20.79 ft.)

November 20, 1937 - E. F. Kowalke - C.W. Borth (map of survey filed as C2188) shows M.C. with no monument description.

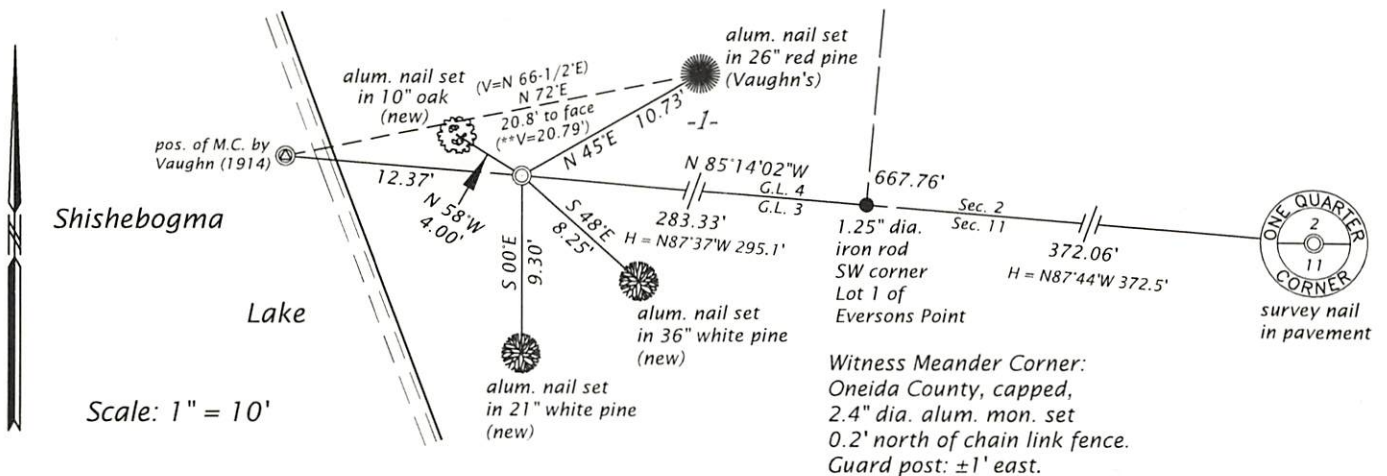
July 26-27, 1948 - Walter A. Hennig, Surveyor (Field Book 4, pages 44-46 and map of survey filed as B5983) describes a recovered a wood post for meander corner. Field notes illustrate a wood post on north side of a fence line.

June 8, 1955 - E. F. Kowalke, Surveyor (Field Book 14, page 1 and map of survey filed as B6113) shows meander corner with no description of monument. An iron pipe is shown on line between the 1/4 corner and the meander corner. This iron pipe is previously described as an iron monument on map C2188.

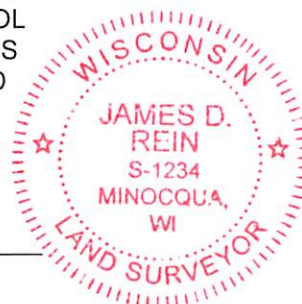
December 3, 1996 - James D. Rein, RLS No. 1234 (field notes for survey filed as B3608) show we searched for this corner and found a 2" inside diameter iron pipe lying flat on shoreline near the end of a chain link fence. We also found Vaughn's 25" dia. Red Pine bearing tree.

August 3, 2022 - James D. Rein, PLS No. 1234: I determined the corner was obliterated and reestablished the position using Hennig's 1948 field notes. This restored position is harmonious with the recovered 26" Red Pine bearing tree. Shoreline erosion now places the corner in the lake, thus we placed a witness corner as shown in the plan.

(c)(d)(e) PLAN VIEW OF CORNER WITH TIES TO AT LEAST 4 WITNESS MONUMENTS. IF IN DISAGREEMENT WITH PREVIOUSLY ESTABLISHED CORNER, SHOW THE DISTANCE BETWEEN THE TWO CORNERS AND ALSO INDICATE THE TIES TO THE DISPUTED CORNER.



(i) I, JAMES D. REIN, PROFESSIONAL LAND SURVEYOR NO. S-1234 HEREBY CERTIFY THAT THE CORNER LOCATION ON THIS RECORD WAS DETERMINED BY ME OR UNDER MY DIRECTION AND CONTROL AND THAT THIS U.S. PUBLIC LAND SURVEY MONUMENT RECORD IS CORRECT AND COMPLETE TO THE BEST OF MY KNOWLEDGE AND BELIEF.



*James D. Rein*  
SIGNATURE

9/24/22  
DATE

INDEX NO. E, 18-19

3905020022



MAY 16 2023

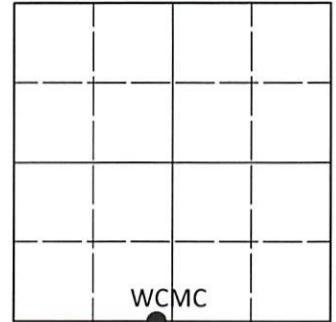
KYLE J. FRANSON  
REGISTER OF DEEDS

### U.S. PUBLIC LAND SURVEY MONUMENT RECORD

Note: This form is intended and designed to fulfill all requirements of Wisconsin Administrative Code, Chapter A-E 7.08 U.S. Public Land Survey Monument Record (3)(a-i).

(a) CORNER LOCATION  
Wit. Meander Cor. of Secs. 2 & 11  
Township 39 North  
Range 5 East of the 4th P.M.  
Town of Minocqua  
County of Oneida

WISCRS - Oneida County  
N: 256,727.59 USft  
E: 157,219.66 USft  
Datum: NAD 83(2011) ep. 2010.00  
GNSS Method: RTN - Offset  
GNSS Control: WISCORS VRS



Sec. 2, T. 39 N., R. 5 E.

(b)(f)(g)(h) Description of monument found at this corner and if it was accepted, state all evidence (material, testimonial, occupational, plats, records, other monuments) used as a basis for accepting. If not accepted or if nothing was found, state evidence used as basis for establishing location. If re-established through lost corner proportionate methods, indicate all monuments, distances and directions used to establish. Indicate type of monument and sign post found or set.

This record is a perpetuation of the following land corner document(s):

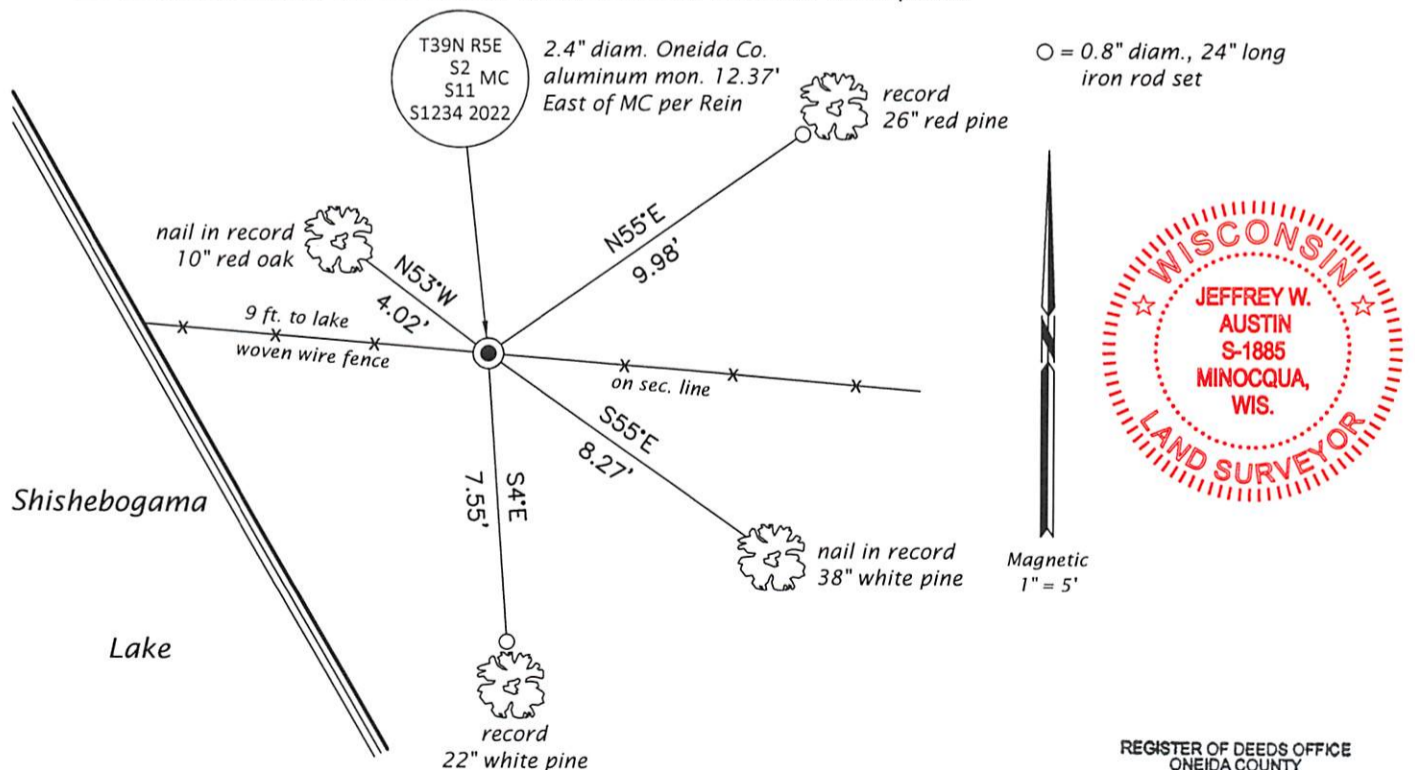
September 24, 2022: USPLS Monument Record by James D. Rein, filed in Oneida County

A complete history of the corner can be found on the previous land corner document(s). I accept the record activity as a true and faithful perpetuation or reestablishment of the original corner location and further perpetuate it as described below.

April 14, 2023: I found and accepted the record monument, a 2.4" diam. aluminum pipe, firmly set, with a 3.3" diam. Oneida Co. aluminum cap projecting 8" above the ground surface. Distances to reference monuments limited as a result of woven wire fence. I found or established accessories as indicated below. I found white vinyl sign posts bearing East, 1.0 ft. and West, 1.3 ft.

The coordinate value shown has been determined by traversing from two or more GNSS offset points satisfying the accuracy requirements defined and qualified in the 2022 Oneida County Fee Schedule for USPLS Corners.

(c)(d)(e) Plan view of corner with ties to at least 4 witness monuments. If in disagreement with previously established corner, show the distances between the two corners and also indicate the ties to the disputed.



(i) I, Jeffrey W. Austin, Professional Land Surveyor No. S-1885, hereby certify that the corner location on this record was determined by me or under my direction and control and that this U.S. Public Land Survey Monument Record is correct and complete to the best of my knowledge and belief.

*[Handwritten Signature]*  
Signature

MAY 1, 2023  
Date

REGISTER OF DEEDS OFFICE  
ONEIDA COUNTY  
FILED

MAY 16 2023

KYLE J. FRANSON  
REGISTER OF DEEDS