

# U.S. PUBLIC LAND SURVEY MONUMENT RECORD

REGISTER OF DEEDS OFFICE  
ONEIDA COUNTY  
FILED

APR 24 2020

Note: This form is intended and designed to fulfill all requirements of the Wisconsin Administrative Code, Chapter A-E 7.08 U.S. Public Land Monument Record (3)(a)(b)(c)(d)(e)(f)(g)(h)(i). An additional sheet may be added if necessary to conform with said requirements.

KYLE J. FRANSON  
REGISTER OF DEEDS

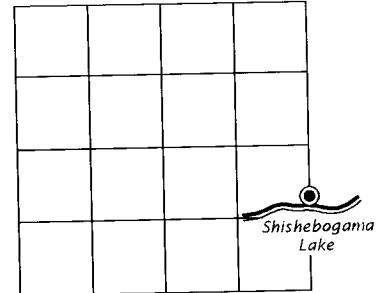
**(a) CORNER LOCATION:**

Meander Corner of Section 3  
Township 39 North  
Range 5 East  
Town of Minocqua  
County of Oneida

North:  
East:  
Datum:  
GNSS Method:  
GNSS Control:

(RECORDING AREA)

SECTION 3



**(b) HISTORY OF ORIGINAL CORNER ESTABLISHMENT**

Original Surveyor: Alexander Anderson  
Date of Survey: Commenced September 15, 1863  
Completed September 20, 1863  
Original B.T.'S : 10" White Pine, S 63°W, 54 lks.

(f)(g)(h) DESCRIPTION OF MONUMENT FOUND AT THIS CORNER AND IF IT WAS ACCEPTED, STATE ALL EVIDENCE (MATERIAL, TESTIMONIAL, OCCUPATIONAL, PLATS, RECORD, OTHER MONUMENTS) USED AS A BASIS FOR ESTABLISHING LOCATION. IF NOT ACCEPTED OR IF NOTHING WAS FOUND, STATE EVIDENCE USED AS BASIS FOR ESTABLISHING LOCATION. IF REESTABLISHED THROUGH LOST CORNER PROPORTIONATE METHODS, INDICATE ALL MONUMENTS, DISTANCES AND DIRECTIONS USED TO ESTABLISH. INDICATE TYPE OF MONUMENT AND SIGN POST FOUND OR SET.

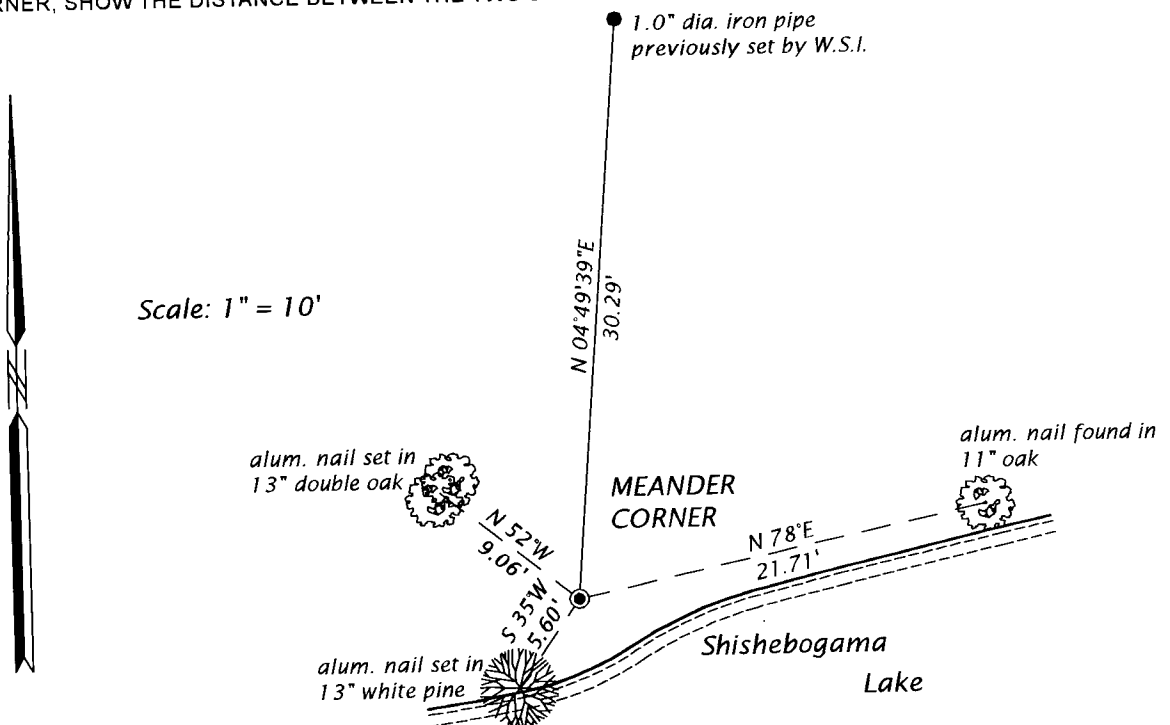
December 29, 1914 - D. H. Vaughan, County Surveyor, Page 166, Old Field Book 7, Projected line south from orig. section corner through orig. quarter corner @ 4.60 chains to set MC post @ 18.42 chains and marked a w. pine stump, 20° N 6°E, 23 1/2 links.

September 6, 1946 - Walter Hennig, Surveyor, Field Book 3, page 74, @ 4.66 chains So. of section corner found the point of D. H. Vaughan's 1/4 post and evidence of both original bt's. He projects line through quarter corner from the section corner and finds no meander corner stake and @ N 6°E, 23 1/2 links, or 15.5 feet from bt. stump drove iron monument @ S 4°W, corrected 2° for 32 year interval. Marked oak 8" N31°W, 16 feet.

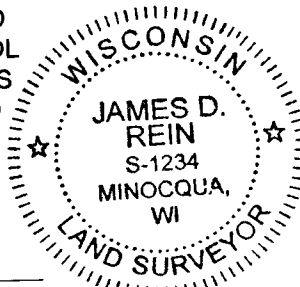
July 25, 1978 - Jerome N. Kraemer, RLS No. 1448 - Wilderness Surveying, Inc., Map 78-145 filed as C405 in county surveyor's office, identifies corner monumented by a found 1 3/4" iron pipe with a union on top, referenced by a 14" pine stump N 7°E, 13.3 feet.

**CONTINUED ON REVERSE SIDE.**

(c)(d)(e) PLAN VIEW OF CORNER WITH TIES TO AT LEAST 4 WITNESS MONUMENTS. IF IN DISAGREEMENT WITH PREVIOUSLY ESTABLISHED CORNER, SHOW THE DISTANCE BETWEEN THE TWO CORNERS AND ALSO INDICATE THE TIES TO THE DISPUTED CORNER.



(i) I, JAMES D. REIN, PROFESSIONAL LAND SURVEYOR NO. S-1234 HEREBY CERTIFY THAT THE CORNER LOCATION ON THIS RECORD WAS DETERMINED BY ME OR UNDER MY DIRECTION AND CONTROL AND THAT THIS U.S. PUBLIC LAND SURVEY MONUMENT RECORD IS CORRECT AND COMPLETE TO THE BEST OF MY KNOWLEDGE AND BELIEF.



*James D. Rein*  
SIGNATURE

2-25-20  
DATE

INDEX NO. C-D-17  
3905031200

CONTINUED FROM REVERSE SIDE

*May 16, 1996 – James D. Rein, RLS No. 1234 – Wilderness Surveying, Inc., Back Bay Condominium recorded in Volume 1 Condo's, page 67. We replaced the recovered iron pipe with an Oneida County capped 2" dia. x 30" long aluminum monument. Although a monument record was not filed, field notes show that the corner was referenced to aluminum nails in the following bt's; 8" oak N78°E, 21.68 feet; 13" w. pine S66°E, 9.66 feet; 6" w. pine S35°W, 5.60 feet; and a 10" oak N52°W, 9.06 feet.*

*October 21, 2019 – James D. Rein, PLS No. 1234 – We recovered the Oneida County capped, 2.4" o.d. aluminum monument previously set, and updated the reference ties as shown in the plan.*