

U.S. PUBLIC LAND SURVEY MONUMENT RECORD

Note: This form is intended and designed to fulfill all requirements of the Wisconsin Administrative Code, Chapter A-E 7.08 U.S. Public Land Monument Record (3)(a)(b)(c)(d)(e)(f)(g)(h)(i). An additional sheet may be added if necessary to conform with said requirements.

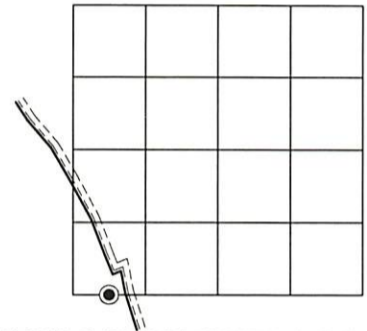
(a) CORNER LOCATION:

Meander Corner south line of Section 8
Township 39 North
Range 5 East
Town of Minocqua
County of Oneida

North:
East:
Datum: NAD
GNSS Method:
GNSS Control:

(RECORDING AREA)

SECTION 8



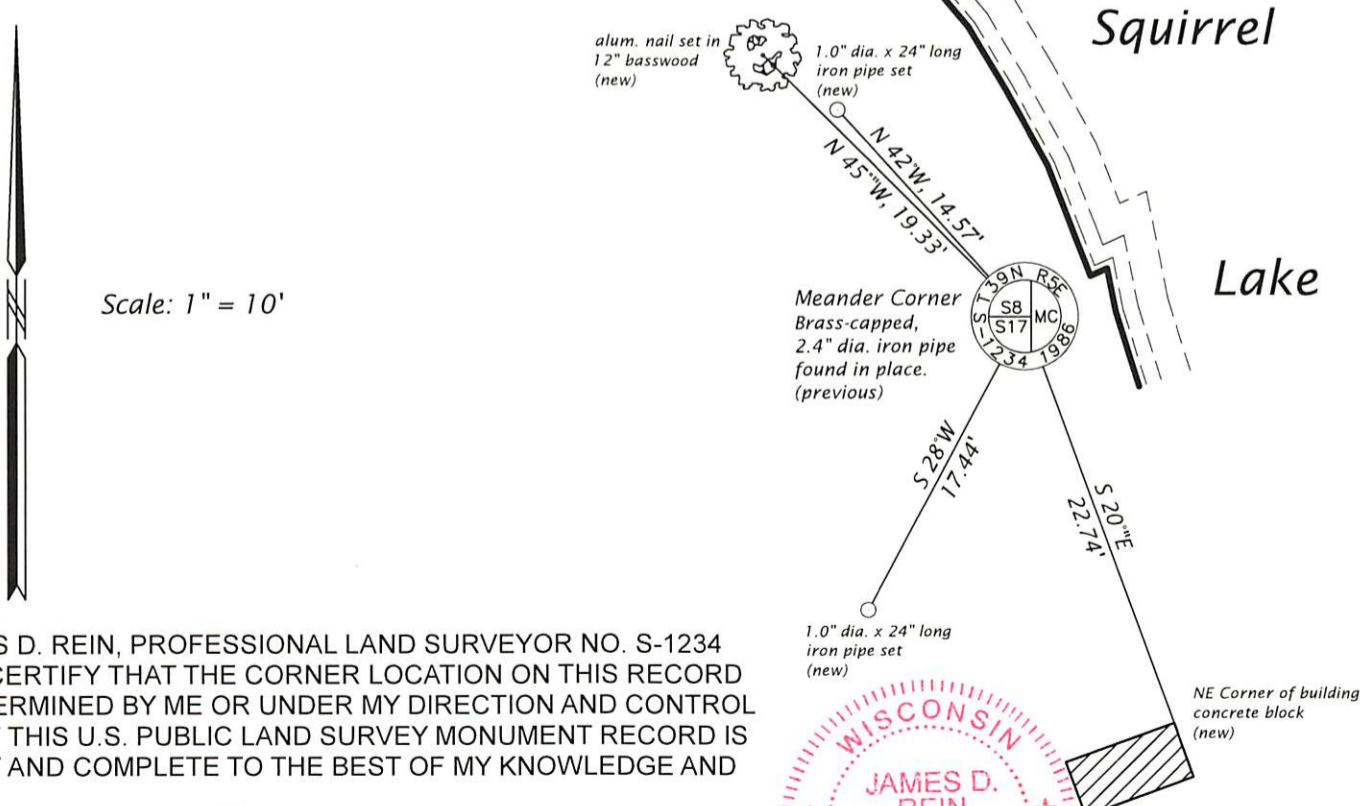
(b) HISTORY OF ORIGINAL CORNER ESTABLISHMENT

Original Surveyor: Alexander Anderson, Deputy Surveyor
Date of Survey: Commenced September 15, 1863
Completed September 20, 1863
Original B.T.'S: Hemlock 12" S 25°W, 14 links (9.24')
Hemlock 18" N 56°W, 61 links (40.26')

(f)(g)(h) DESCRIPTION OF MONUMENT FOUND AT THIS CORNER AND IF IT WAS ACCEPTED, STATE ALL EVIDENCE (MATERIAL, TESTIMONIAL, OCCUPATIONAL, PLATS, RECORD, OTHER MONUMENTS) USED AS A BASIS FOR ESTABLISHING LOCATION. IF NOT ACCEPTED OR IF NOTHING WAS FOUND, STATE EVIDENCE USED AS BASIS FOR ESTABLISHING LOCATION. IF REESTABLISHED THROUGH LOST CORNER PROPORTIONATE METHODS, INDICATE ALL MONUMENTS, DISTANCES AND DIRECTIONS USED TO ESTABLISH. INDICATE TYPE OF MONUMENT AND SIGN POST FOUND OR SET.

- March 25, 1903 - D. H. Vaughan, Oneida County Surveyor - Field Book 4, page 21: Survey of Squirrel Lake Island, recovered original post and both bearing trees. He set new post.
- April 30, 1926 - D. S. Burnett, Surveyor, Plat of Bo-Di-Lac - Old Field Book 28, page 19: Random East from corner Section 7, 8, 17 & 18, Var. 3°45'E, 583 feet had varied 1 ft. North of M.C., set lot stake @ 601 ft. (Original government distance 8.90 chains, or 587.4 feet)
- September 1974 and revisions - Stuart Foltz, RLS - Map filed as C1154 in County Surveyor's Office, of resurvey Lots 1 through 7, Blocks 1 and 5, Plat of Bo-Di-Lac, recovered 1 3/4" iron pipe, referenced by a 10" Hemlock bearing S59°E, 11.0'. Note the Northwoods Surveyors Inc. field notes for this survey described 1 3/4" iron pipe & post "IXI", referenced by a Hemlock, S 19°E, 11.0'. (Burnett's scribe mark on his posts and bearing trees were "IXI")
- July 28, 1986 - James D. Rein, RLS No.1234, Map of survey in Gov't. Lot 1, Section 17, T39N, R5E, filed as B1484 in the Oneida County Surveyor's Office, describes the corner as "Set brass capped 2" dia. x 60" long iron pipe to replace a 1 3/8" iron pipe found in place. The field notes described Burnett's old 4" sq. post wired to iron pipe and Burnett's 12" Hemlock stp. S12°E, 12.0 ft, and a 26" Hemlock N30°E, 6.10 ft.; made new bt's Hemlock 7" S71°E, 11.83 ft., 6" Basswood S5°W, 9.17'; 11" Basswood N44°W, 23.94 ft.
- September 20, 2024 - James D. Rein, PLS No. 1234, we recovered the previously set brass capped 2.4" dia. iron pipe and made new reference ties as shown in plan.

(c)(d)(e) PLAN VIEW OF CORNER WITH TIES TO AT LEAST 4 WITNESS MONUMENTS. IF IN DISAGREEMENT WITH PREVIOUSLY ESTABLISHED CORNER, SHOW THE DISTANCE BETWEEN THE TWO CORNERS AND ALSO INDICATE THE TIES TO THE DISPUTED CORNER.



(i) I, JAMES D. REIN, PROFESSIONAL LAND SURVEYOR NO. S-1234 HEREBY CERTIFY THAT THE CORNER LOCATION ON THIS RECORD WAS DETERMINED BY ME OR UNDER MY DIRECTION AND CONTROL AND THAT THIS U.S. PUBLIC LAND SURVEY MONUMENT RECORD IS CORRECT AND COMPLETE TO THE BEST OF MY KNOWLEDGE AND BELIEF.

James D. Rein
SIGNATURE

11/02/24
DATE



INDEX NO. J-5-6
3905080035