

U.S. PUBLIC LAND SURVEY MONUMENT RECORD

REGISTER OF DEEDS OFFICE
ONEIDA COUNTY
FILED

JUN 26 2020

Note: This form is intended and designed to fulfill all requirements of the Wisconsin Administrative Code, Chapter A-E 7.08 U.S. Public Land Monument Record (3)(a)(b)(c)(d)(e)(f)(g)(h)(i). An additional sheet may be added if necessary to conform with said requirements.

KYLE J. FRANSON
REGISTER OF DEEDS

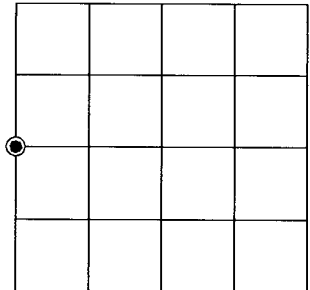
(a) CORNER LOCATION:

West Quarter Corner of Section 20
Township 39 North
Range 5 East
Town of Minocqua
County of Oneida

North:
East:
Datum:
GNSS Method:
GNSS Control:

(RECORDING AREA)

SECTION 20



(b) HISTORY OF ORIGINAL CORNER ESTABLISHMENT

Original Surveyor: Alexander Anderson
Date of Survey: Commenced September 15, 1863
Completed September 20, 1863
Original B.T.'S : 12" Hemlock, N 57°W, 21 lks.
6" Birch, N 30°E, 15 lks.

(f)(g)(h) DESCRIPTION OF MONUMENT FOUND AT THIS CORNER AND IF IT WAS ACCEPTED, STATE ALL EVIDENCE (MATERIAL, TESTIMONIAL, OCCUPATIONAL, PLATS, RECORD, OTHER MONUMENTS) USED AS A BASIS FOR ESTABLISHING LOCATION. IF NOT ACCEPTED OR IF NOTHING WAS FOUND, STATE EVIDENCE USED AS BASIS FOR ESTABLISHING LOCATION. IF REESTABLISHED THROUGH LOST CORNER PROPORTIONATE METHODS, INDICATE ALL MONUMENTS, DISTANCES AND DIRECTIONS USED TO ESTABLISH. INDICATE TYPE OF MONUMENT AND SIGN POST FOUND OR SET.

Sept. 14, 1927 - 3 Halls + car (Hall field book 101, pages 26 and 27) found post at orig. ¼ S. "No evidence of birch but the hemlock is a very good specimen - still alive scribe marks all plain

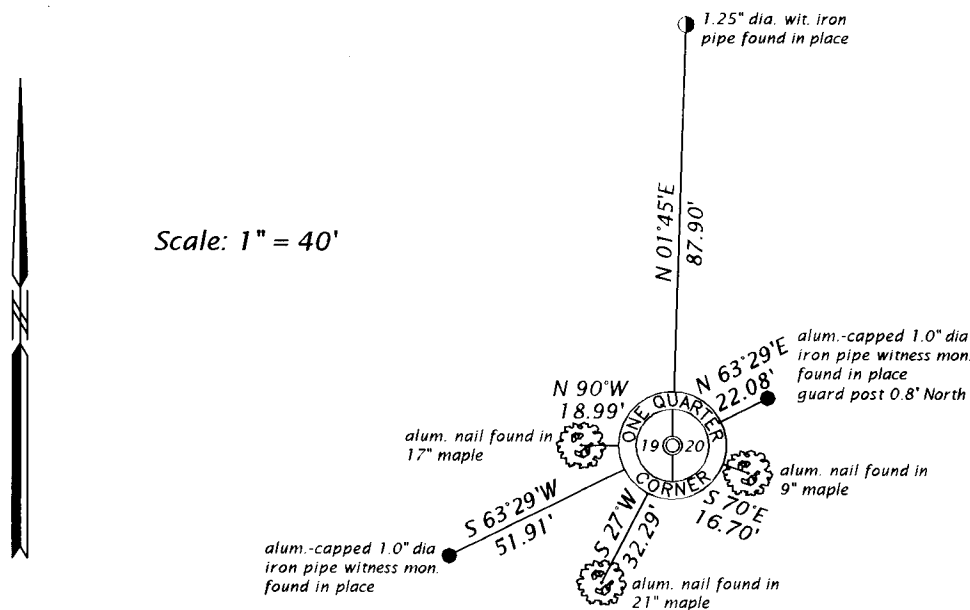
April 1945 - E. F. Kowalke (his book 3, page 4) found marked post down. Reset 14 feet from marked hemlock stump N44°W and 10 feet from rotted birch S44°W, and marked Maple 6" S60°W, 18.9 ft. and Maple 8" N27°W 6.2 ft.

Nov. 12, 1954 - E. F. Kowalke (his book 13, page 25 and map filed as L2213 in County Survey record) corner is described as I.P. in roadway, referenced by a maple 14" N86°E, 20.2 feet and a maple 12" S86°W, 19.0 feet.

Dec. 1962 - James G. Griffin, RLS (Northwoods Surveyors map dated Dec. 1962, and filed as B358 in County Survey record) describes corner referenced by 14" maple N88°E, 20.2 feet and 12" maple West, 18.5 feet.

Continued on reverse page:

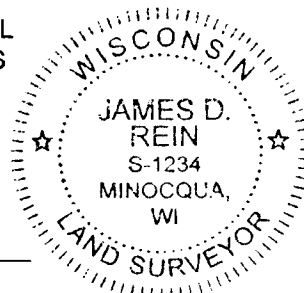
(c)(d)(e) PLAN VIEW OF CORNER WITH TIES TO AT LEAST 4 WITNESS MONUMENTS. IF IN DISAGREEMENT WITH PREVIOUSLY ESTABLISHED CORNER, SHOW THE DISTANCE BETWEEN THE TWO CORNERS AND ALSO INDICATE THE TIES TO THE DISPUTED CORNER.



(i) I, JAMES D. REIN, PROFESSIONAL LAND SURVEYOR NO. S-1234 HEREBY CERTIFY THAT THE CORNER LOCATION ON THIS RECORD WAS DETERMINED BY ME OR UNDER MY DIRECTION AND CONTROL AND THAT THIS U.S. PUBLIC LAND SURVEY MONUMENT RECORD IS CORRECT AND COMPLETE TO THE BEST OF MY KNOWLEDGE AND BELIEF.

James D. Rein
SIGNATURE

6-15-20
DATE



INDEX NO. P - 5
3905192000

Continued from reverse page:

July 9, 1993 - James D. Rein, RLS #1234 (Wilderness Surveying, Inc. Map No. 93-51, dated July 22, 1993, and filed as B2809 in County Survey record describes corner monumented by a set Oneida County capped 2" dia. alum. monument, and a note "See USPLS Mon. Rec.") The file was apparently closed before the monument record was made. The survey notes show that we replaced a found 3 1/2" dia. well pump found 4" below surface of roadbed, referenced by a 16" maple stp. N87°50'E, 20.8 feet; and made new bearing trees as follows: 6" maple S74°15'W, 16.74 feet; 5" Hemlock N28°45'E, 27.72 feet; 15" Maple N89°30'W, 19.01 feet; and a 10" maple S19°48'W, 32.32 feet: also referenced by aluminum capped 1" diameter set iron pipes bearing N63°28'40"E, 22.08 feet and S63°28'40"W, 51.90 feet.

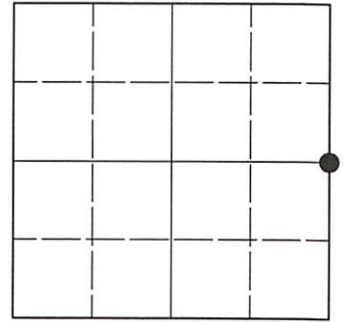
May 17, 2019 - James D. Rein, PLS No. 1234 - We recovered the Oneida County capped 2.4" outside diameter alum. monument previously set, referenced by aluminum capped iron pipes and bearing trees as shown in the plan.

U.S. PUBLIC LAND SURVEY MONUMENT RECORD

Note: This form is intended and designed to fulfill all requirements of Wisconsin Administrative Code, Chapter A-E 7.08 U.S. Public Land Survey Monument Record (3)(a-i).

(a) CORNER LOCATION
 1/4 Cor. of Secs. 19 & 20
 Township 39 North
 Range 5 East of the 4th P.M.
 Town of Minocqua
 County of Oneida

WISCRS - Oneida County
 N: 244,140.75 USft
 E: 139,570.71 USft
 Datum: NAD 83(2011) ep. 2010.00
 GNSS Method: RTN - Offset
 GNSS Control: WISCORS VRS



Sec. 19, T. 39 N., R. 5 E.

(b)(f)(g)(h) Description of monument found at this corner and if it was accepted, state all evidence (material, testimonial, occupational, plats, records, other monuments) used as a basis for accepting. If not accepted or if nothing was found, state evidence used as basis for establishing location. If re-established through lost corner proportionate methods, indicate all monuments, distances and directions used to establish. Indicate type of monument and sign post found or set.

This record is a perpetuation of the following land corner document(s):

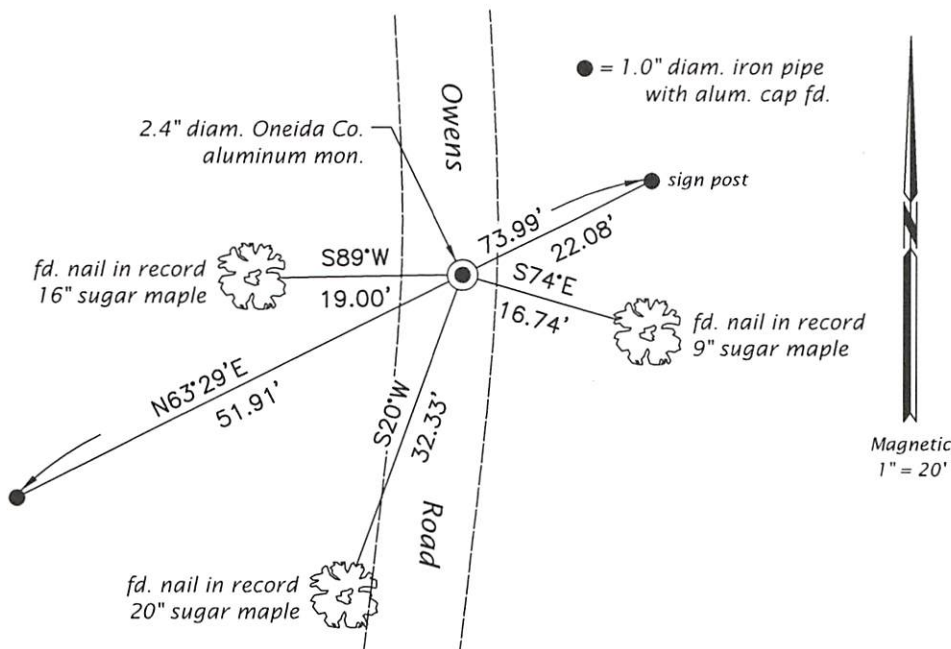
June 15, 2020: USPLS Monument Record by James D. Rein, filed in Oneida County

A complete history of the corner can be found on the previous land corner document(s). I accept the record activity as a true and faithful perpetuation or reestablishment of the original corner location and further perpetuate it as described below.

August 12, 2022: I found and accepted the record monument, a 2.4" diam. aluminum pipe, firmly set, with a 3.3" diam. Oneida Co. aluminum cap 6" beneath the gravel road surface. I found or established accessories as indicated below.

The coordinate value shown has been determined by traversing from two or more GNSS offset points satisfying the accuracy requirements defined and qualified in the 2022 Oneida County Fee Schedule for USPLS Corners.

(c)(d)(e) Plan view of corner with ties to at least 4 witness monuments. If in disagreement with previously established corner, show the distances between the two corners and also indicate the ties to the disputed.



REGISTER OF DEEDS OFFICE
 ONEIDA COUNTY
 FILED

NOV 14 2022

KYLE J. FRANSON
 REGISTER OF DEEDS

(i) I, Jeffrey W. Austin, Professional Land Surveyor No. S-1885, hereby certify that the corner location on this record was determined by me or under my direction and control and that this U.S. Public Land Survey Monument Record is correct and complete to the best of my knowledge and belief.

 SEP-17, 2022
 Signature Date