

# U.S. PUBLIC LAND SURVEY MONUMENT RECORD

REGISTER OF DEEDS OFFICE  
ONEIDA COUNTY  
FILED

JUN 26 2020

Note: This form is intended and designed to fulfill all requirements of the Wisconsin Administrative Code, Chapter A-E 7.08 U.S. Public Land Monument Record (3)(a)(b)(c)(d)(e)(f)(g)(h)(i). An additional sheet may be added if necessary to conform with said requirements.

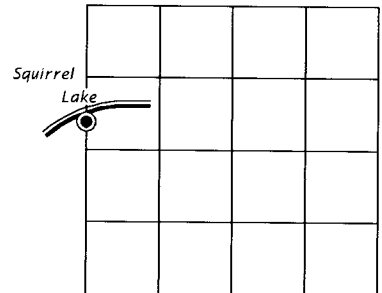
KYLE J. FRANSON  
REGISTER OF DEEDS

**(a) CORNER LOCATION:**

Meander Corner of Section 20	North:
Township 39 North	East:
Range 5 East	Datum:
Town of Minocqua	GNSS Method:
County of Oneida	GNSS Control:

(RECORDING AREA)

**SECTION 20**



**(b) HISTORY OF ORIGINAL CORNER ESTABLISHMENT**

Original Surveyor: Alexander Anderson  
 Date of Survey: Commenced September 15, 1863  
 Completed September 20, 1863  
 Original B.T.'S : 8" Maple, N 28°E, 10 lks.  
 5" Birch, S 25°W, 16 lks.

(f)(g)(h) DESCRIPTION OF MONUMENT FOUND AT THIS CORNER AND IF IT WAS ACCEPTED, STATE ALL EVIDENCE (MATERIAL, TESTIMONIAL, OCCUPATIONAL, PLATS, RECORD, OTHER MONUMENTS) USED AS A BASIS FOR ESTABLISHING LOCATION. IF NOT ACCEPTED OR IF NOTHING WAS FOUND, STATE EVIDENCE USED AS BASIS FOR ESTABLISHING LOCATION. IF REESTABLISHED THROUGH LOST CORNER PROPORTIONATE METHODS, INDICATE ALL MONUMENTS, DISTANCES AND DIRECTIONS USED TO ESTABLISH. INDICATE TYPE OF MONUMENT AND SIGN POST FOUND OR SET.

October 20, 1927 - 3 Halls + car (Hall field book 101, pages 53 and 54) Set M.C. #35 on west line Sec. 20 by an average course of all corners run in Sec. 20. Set post and mark w. birch 7" S 1°W, .121 ch., and w. birch 7" S 48°E, .19 chains.

April 1945 - E. F. Kowlke (his book 3, page 4) No stake, two birch bt's, no record. Set temporary stake at intersection of bt facing, and shows distance of 7.75 ch., or 511.5 ft. north from ¼ corner.

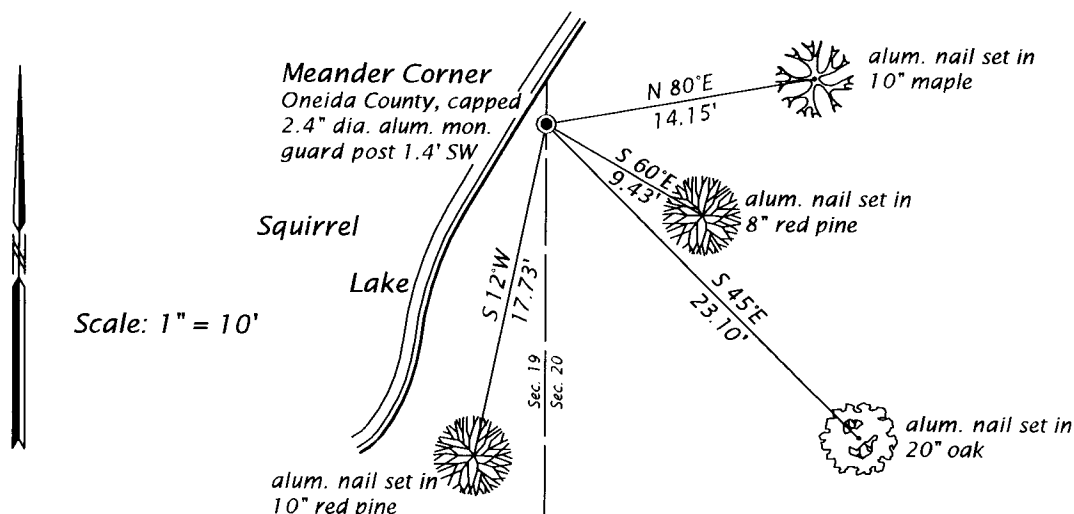
July 5 & 6, 1946 - Walter Hennig (his book 3, page 44) describes corner monument as "new post", referenced by a birch 6" N 4°15'W, 8.3 ft. and a birch 6" S 47 ½°E, 12.4 ft.

August 29, 1953 - E. F. Kowalke (his book 11, page 61, being a survey for James Owen in Section 19) shows a bearing of N 0°20'W, and a distance of 511.7 feet north from the ¼ corner to the M.C., marked by a "Post & I.P."

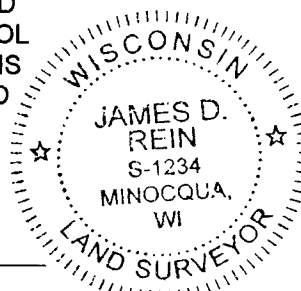
Sept. 28, 1995 - Stuart L. Foltz, RLS No. 1170 (map of survey filed as C1185 in County Survey record describes the meander corner as "Oneida Co. alum. mon. set" at a bearing of N 00°11'12"W, and a distance of 511.40 feet from the ¼ corner.

June 4, 2019 - James D. Rein, PLS No. 1234 - We recovered, and I accepted an Oneida County capped 2.4" dia. aluminum monument extending 4" above ground level, marked to identify the corner. We made reference ties to four new bearing trees as shown on the plan.

(c)(d)(e) PLAN VIEW OF CORNER WITH TIES TO AT LEAST 4 WITNESS MONUMENTS. IF IN DISAGREEMENT WITH PREVIOUSLY ESTABLISHED CORNER, SHOW THE DISTANCE BETWEEN THE TWO CORNERS AND ALSO INDICATE THE TIES TO THE DISPUTED CORNER.



(i) I, JAMES D. REIN, PROFESSIONAL LAND SURVEYOR NO. S-1234 HEREBY CERTIFY THAT THE CORNER LOCATION ON THIS RECORD WAS DETERMINED BY ME OR UNDER MY DIRECTION AND CONTROL AND THAT THIS U.S. PUBLIC LAND SURVEY MONUMENT RECORD IS CORRECT AND COMPLETE TO THE BEST OF MY KNOWLEDGE AND BELIEF.



*James D. Rein* 6-15-20  
 SIGNATURE DATE

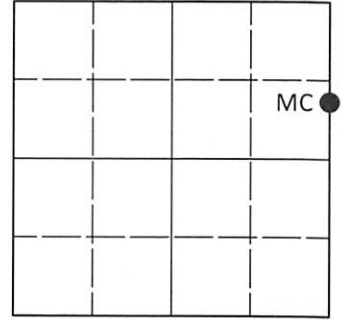
INDEX NO. O-P - 5  
 3905192700

**U.S. PUBLIC LAND SURVEY MONUMENT RECORD**

Note: This form is intended and designed to fulfill all requirements of Wisconsin Administrative Code, Chapter A-E 7.08 U.S. Public Land Survey Monument Record (3)(a-i).

(a) CORNER LOCATION  
 Meander Cor. of Secs. 19 & 20  
 Township 39 North  
 Range 5 East of the 4th P.M.  
 Town of Minocqua  
 County of Oneida

WISCRS - Oneida County  
 N: 244,651.70 USft  
 E: 139,589.65 USft  
 Datum: NAD 83(2011) ep. 2010.00  
 GNSS Method: RTN - Direct  
 GNSS Control: WISCORS VRS



Sec. 19, T. 39 N., R. 5 E.

(b)(f)(g)(h) Description of monument found at this corner and if it was accepted, state all evidence (material, testimonial, occupational, plats, records, other monuments) used as a basis for accepting. If not accepted or if nothing was found, state evidence used as basis for establishing location. If re-established through lost corner proportionate methods, indicate all monuments, distances and directions used to establish. Indicate type of monument and sign post found or set.

*This record is a perpetuation of the following land corner document(s):*

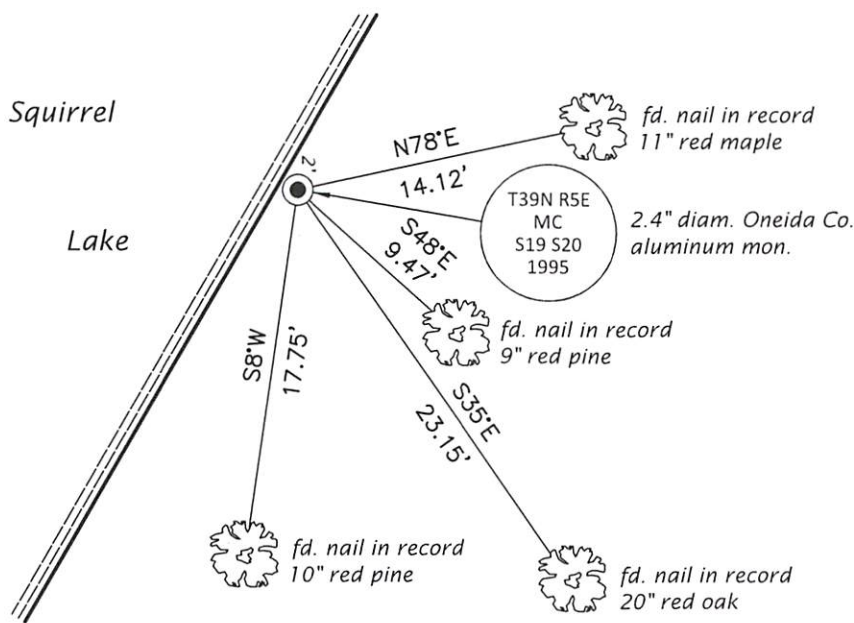
*June 15, 2020: USPLS Monument Record by James D. Rein, filed in Oneida County*

*A complete history of the corner can be found on the previous land corner document(s). I accept the record activity as a true and faithful perpetuation or reestablishment of the original corner location and further perpetuate it as described below.*

*August 12, 2022: I found and accepted the record monument, a 2.4" diam. aluminum pipe, loosely set, with a 3.3" diam. Oneida Co. aluminum cap projecting 4" above the ground surface. I found or established accessories as indicated below. I found a white vinyl sign post bearing Southwest, 1.4 ft.*

*The coordinate value shown is the weighted mean of two or more GNSS observations at markedly different times satisfying the accuracy requirements defined and qualified in the 2022 Oneida County Fee Schedule for USPLS Corners.*

(c)(d)(e) Plan view of corner with ties to at least 4 witness monuments. If in disagreement with previously established corner, show the distances between the two corners and also indicate the ties to the disputed.



REGISTER OF DEEDS OFFICE  
 ONEIDA COUNTY  
 FILED

NOV 14 2022

KYLE J. FRANSON  
 REGISTER OF DEEDS

(i) I, Jeffrey W. Austin, Professional Land Surveyor No. S-1885, hereby certify that the corner location on this record was determined by me or under my direction and control and that this U.S. Public Land Survey Monument Record is correct and complete to the best of my knowledge and belief.

*[Handwritten Signature]*  
 Signature

SEP. 17, 2022  
 Date