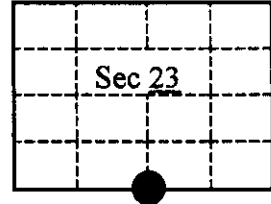


U.S. PUBLIC LAND SURVEY MONUMENT RECORD

Note: This form is intended and designed to fulfill all requirements of Wisconsin Administrative Code, Chapter A-E 7.08 U.S. Land Survey Monument Record (3)(a)(b)(c)(d)(e)(f)(g)(h)(i). An additional sheet may be added if necessary to conform with said requirements.

(a) CORNER LOCATION: State Plane Coordinates
 S¼ Corner of Sec. 23 X _____
 Township 39 North Y _____
 Range 5 East Datum Base _____
 Town Minocqua County of Oneida

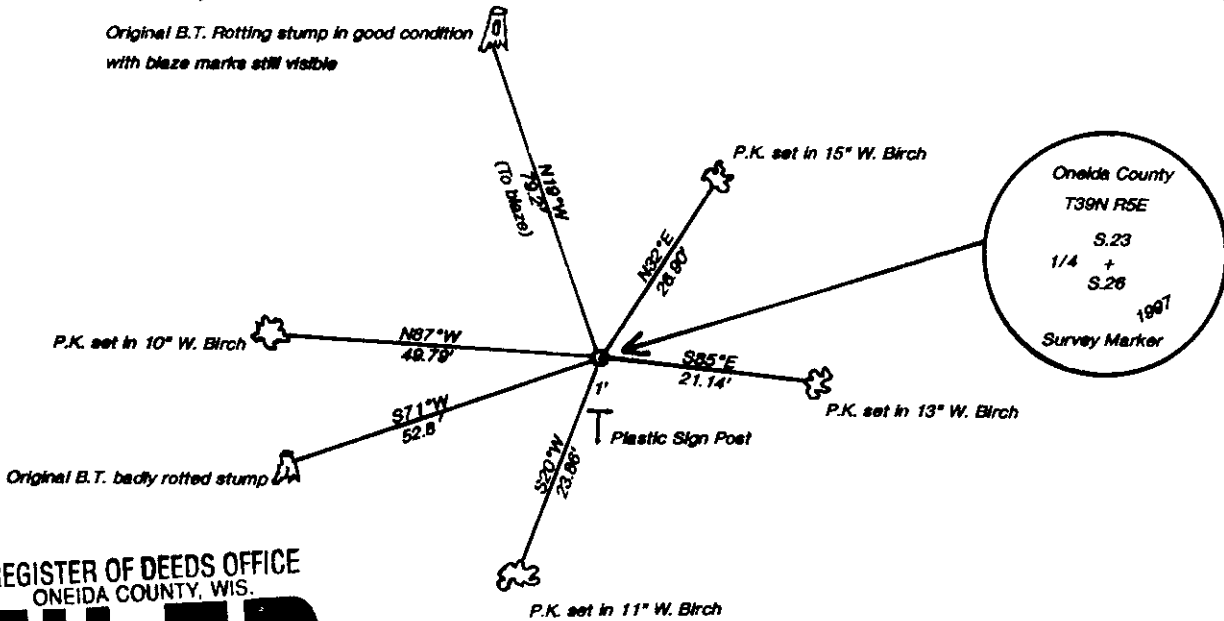


(b) HISTORY OF ORIGINAL CORNER ESTABLISHMENT Original B.T.'s
 Original Surveyor: Alex Anderson Yellow Pine 12", S70½°W, 80 links (52.80')
 Date of Survey: Commenced Sept., 1863 Yellow Pine 12", N20°W, 120 links (79.20')
 Completed _____

(b)(f)(g)(h) Description of monument found at this corner and if it was accepted, state all evidence (material, testimonial, occupational, plats, records, other monuments) used as a basis for accepting. If not accepted or if nothing was found, state evidence used as basis for establishing location. If reestablished through lost corner proportionate methods, indicate all monuments, distances and directions used to establish. Indicate type of monument and sign post found or set.

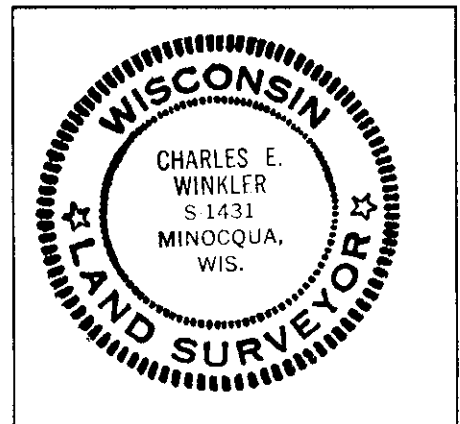
- 1863 - Alex Anderson set post for ¼ corner
- 1966 - Nepco (Stuth) shows monument with B.T. Pine stump 12", S70°W, 52.0'
- 1997 - I recovered and accepted a ¾" diameter tie-rod shaft with two B.T. stumps. Also found a 3" square wood post and 1¾" iron pipe up 27" adjacent. I replaced the ¾" diameter tie-rod shaft with an Oneida County aluminum monument and made four new B.T.'s.

(c)(d)(e) Plan view of corner with ties to at least 4 witness monuments. If in disagreement with previously established corner, show the distances between the two corners and also indicate the ties to the disputed.



REGISTER OF DEEDS OFFICE
 ONEIDA COUNTY, WIS.
FILED
 JAN 18 1999

(i) I, Charles E. Winkler, #S-1431
 hereby certify that the corner location on this record was determined by me or under my direction and control and that this U.S. Public Land Survey Monument Record is correct and complete to the best of my knowledge and belief.



Index No. R 19

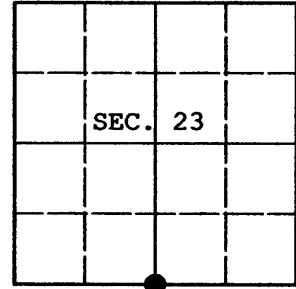
Charles E. Winkler 1/12/1999
 Signature Foltz & Associates, Inc. Date

3905230020

U.S. PUBLIC LAND SURVEY MONUMENT RECORD

Note: This form is intended and designed to fulfill all requirements of Wisconsin Administrative Code, Chapter A-E 7.08 U.S. Public Land Survey Monument Record (3) (a) (b) (c) (d) (e) (f) (g) (h) (i). An additional sheet may be added if necessary to conform with said requirements.

(a) CORNER LOCATION: Plane Coordinates
 1/4 Cor. of Secs. 23 & 26 X:
 Township 39 North Y:
 Range 5 East of the 4th P.M. Datum:
 Town of Minocqua County of Oneida



(b) HISTORY OF ORIGINAL CORNER ESTABLISHMENT

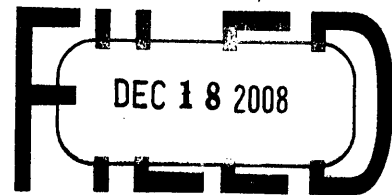
Original Surveyor: Alexander Anderson Original Accessories:
 Date of Survey: Commenced Sep. 15, 1863 Y. Pine 12" S.70-1/2°W., 80 lks.
 Completed Sep. 20, 1863 Y. Pine 12" N.20°W., 120 lks.

(b) (f) (g) (h) Description of monument found at this corner and if it was accepted, state all evidence (material, testimonial, occupational, plats, records, other monuments) used as a basis for accepting. If not accepted or if nothing was found, state evidence used as basis for establishing location. If re-established through lost corner proportionate methods, indicate all monuments, distances and directions used to establish. Indicate type of monument and sign post found or set.

NOTE: This is a perpetuation of a previous USPLS Monument Record by Charles E. Winkler, RLS dated January 12, 1999 and filed in the office of the Oneida County Register of Deeds. A complete history of the corner can be found on the previous monument record. I accept the previous location as a true and faithful perpetuation or reestablishment of the original corner location and further perpetuate it as follows.

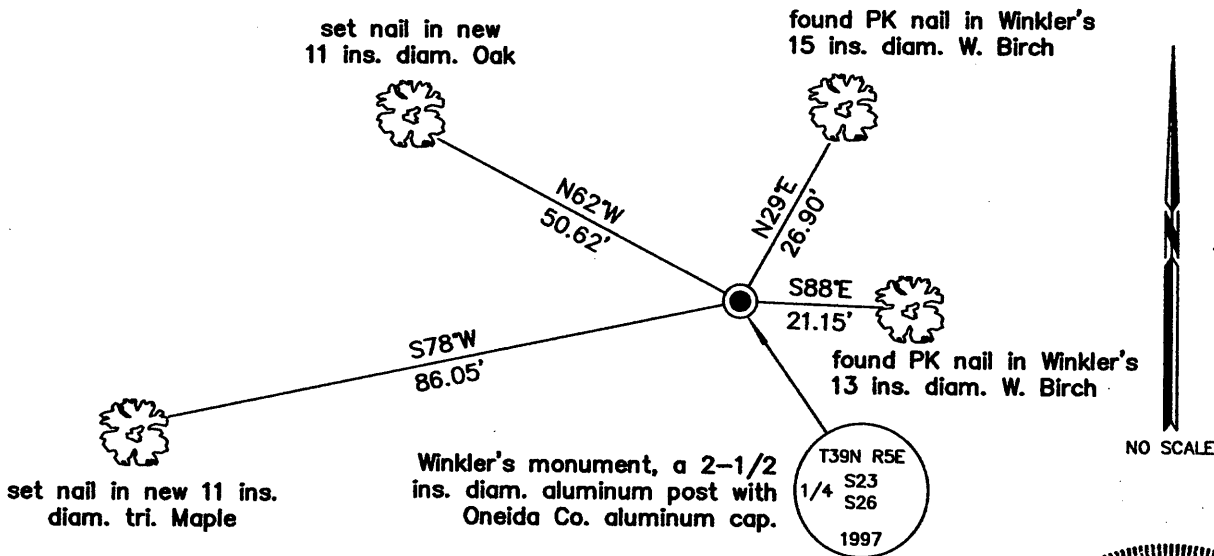
April 23, 2008: I found and accepted Winkler's monument, an aluminum post, 2-1/2 ins. diam. with Oneida Co. aluminum cap projecting 6 ins. above the ground surface. Two of Winkler's birch are dead or have been cut. I established accessories as shown below and found a white plastic sign post bearing South, 1-1/2 ft. dist.

REGISTER OF DEEDS OFFICE
 ONEIDA COUNTY, WIS.



At _____ O'Clock _____ M
THOMAS H. LEIGHTON
 REGISTER OF DEEDS

(c) (d) (e) Plan view of corner with ties to at least 4 witness monuments. If disagreement with previously established corner, show the distances between the two corners and also indicate the ties to the disputed.



(i) I, Jeffrey W. Austin, Registered Land Surveyor No. S-1885, hereby certify upon honor that the corner location on this record was determined by me or under my direction and control and that this U.S. Public Land Survey Monument Record is correct and complete to the best of my knowledge and belief.

Signature _____ Date DEC. 12, 2008



INDEX NO. R-19 (3905230020)