

U.S. PUBLIC LAND SURVEY MONUMENT RECORD

NOTE: This form is intended and designed to fulfill all requirements of Wisconsin Administrative Code, Chapter A-E 7.08 U.S. Public Land Survey Monument Record. An additional sheet may be added if necessary to conform with said requirements.

CORNER LOCATION

Quarter Corner common to Sections 26 and 35
Township 39 North, Range 5 East of the 4th P.M.
Town of Minocqua, Oneida County, Wisconsin

CORNER ID:
3905260020

6	5	4	3	2	1
7	8	9	10	11	12
18	17	16	15	14	13
19	20	21	22	23	24
30	29	28	27	26	25
31	32	33	34	35	36

T39N - R5E

HISTORY OF ORIGINAL CORNER ESTABLISHMENT

ORIGINAL SURVEYOR: Anderson, Alex
DATE OF SURVEY: September 1863
ORIGINAL ACCESSORIES: At 39.70 ch, set quarter post
5" Tamarac, N5°W, 300 lks.
No other trees near

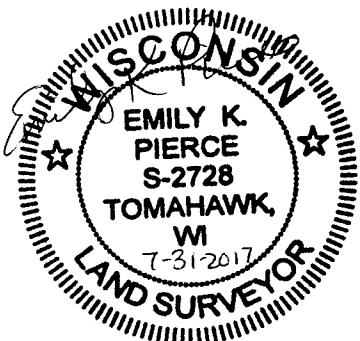
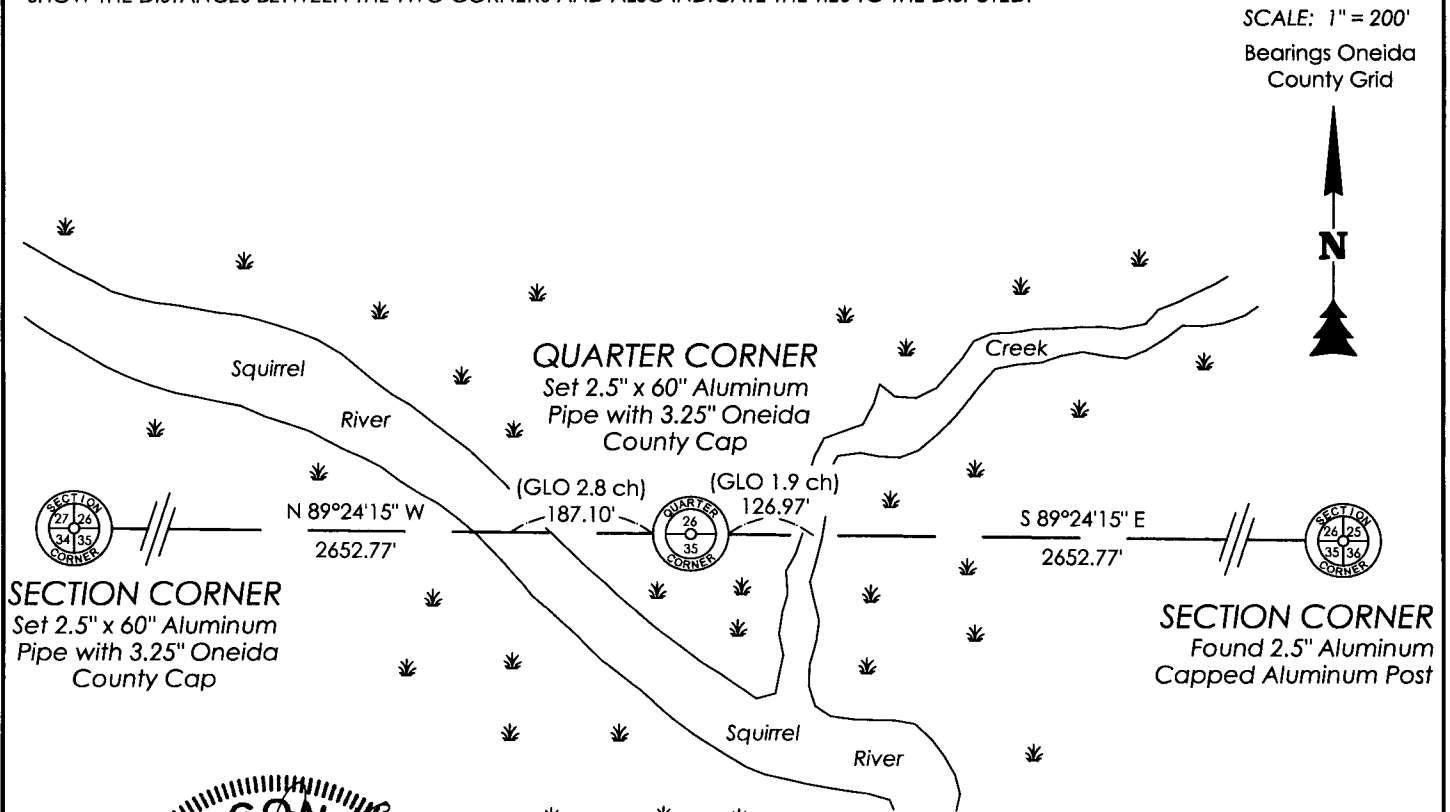
COORDINATES:
Oneida County, NAD 83(2011)
N: 235767.39
E: 157831.28

DESCRIPTION OF MONUMENT FOUND AT THIS CORNER AND IF IT WAS ACCEPTED, STATE ALL EVIDENCE MATERIAL, TESTIMONIAL, OCCUPATIONAL, PLATS, RECORDS, OTHER MONUMENTS USED AS A BASIS FOR ACCEPTING. IF NOT ACCEPTED OR IF NOTHING WAS FOUND, STATE EVIDENCE USED AS BASIS FOR ESTABLISHING LOCATION. IF RE-ESTABLISHED THROUGH LOST CORNER PROPORTIONATE METHODS, INDICATE ALL MONUMENTS, DISTANCES AND DIRECTIONS USED TO ESTABLISH. INDICATE TYPE OF MONUMENT AND SIGN POST FOUND OR SET.

July 10, 2017, Jeff Austin visited corner location and searched large area, finding no evidence. Squirrel River and creek are at flood with 2 feet of standing water at corner location. No evidence of original bearing tree. If a stump still remains, it's under water. Computed single proportion between the SW and SE corners of Section 26. This location fits well with GLO calls east and west to Squirrel River and creek. Accepted single proportion as corner location and set a 2.5" x 60" aluminum pipe with a 3.25" Oneida County aluminum cap at the corner location and a white vinyl sign post 1 foot north. At this time, there was no appropriate location to place accessories to the corner. None set.

The coordinate value shown has been verified by at least one of the following methods: 1) comparison to a previously GPS determined published value; 2) the value is the average of two or more GPS observations at a markedly different time; 3) one or more distances were measured back to the GPS observed corner from temporary GPS observed offset locations.

PLAN VIEW OF CORNER WITH TIES TO AT LEAST 4 WITNESS MONUMENTS. IF IN DISAGREEMENT WITH PREVIOUSLY ESTABLISHED CORNER, SHOW THE DISTANCES BETWEEN THE TWO CORNERS AND ALSO INDICATE THE TIES TO THE DISPUTED.



REGISTER OF DEEDS OFFICE
ONEIDA COUNTY
FILED

AUG 10 2017

AT _____ O'CLOCK
KYLE J. FRANSON
REGISTER OF DEEDS

I, Emily K. Pierce, Professional Land Surveyor No. S-2728, hereby certify that the corner location on this record was determined by me or under my direction and control and that this U.S. Public Land Survey Monument Record is correct and complete to the best of my knowledge and belief.

Emily K. Pierce

Emily K. Pierce, PLS No. S-2728
STEIGERWALDT LAND SURVEYING, LLC

V-19