

U.S. PUBLIC LAND SURVEY MONUMENT RECORD

REGISTER OF DEEDS OFFICE
ONEIDA COUNTY
FILED

JAN 03 2019

KYLE J. FRANSON
REGISTER OF DEEDS

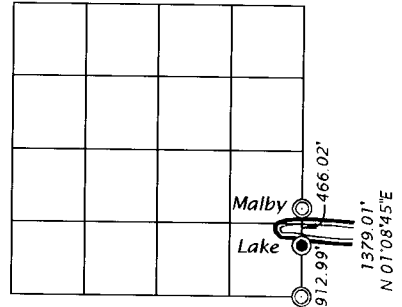
Note: This form is intended and designed to fulfill all requirements of the Wisconsin Administrative Code, Chapter A-E 7.08 U.S. Public Land Monument Record (3)(a)(b)(c)(d)(e)(f)(g)(h)(i). An additional sheet may be added if necessary to conform with said requirements.

(a) CORNER LOCATION:

South Meander Corner on east of Section 7 North:
Township 39 North East:
Range 6 East Datum:
Town of Minocqua GNSS Method:
County of Oneida GNSS Control:

(RECORDING AREA)

SECTION 7



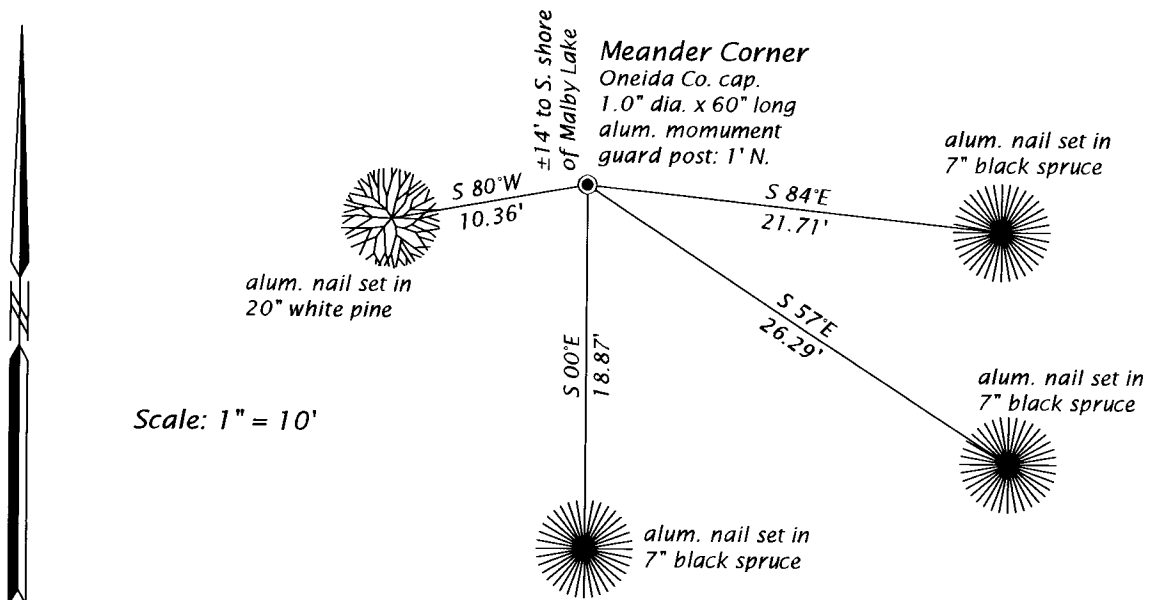
(b) HISTORY OF ORIGINAL CORNER ESTABLISHMENT

Original Surveyor: Alexander Anderson
Date of Survey: Commenced October 13, 1863
Completed October 23, 1863.
Original B.T.'S: 9" W. Pine, S 12°E, 201 lks.
9" W. Pine, S 15°W, 210 lks.

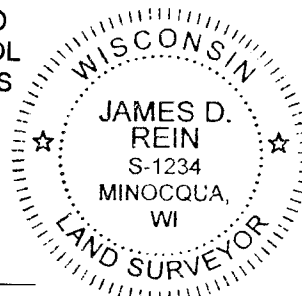
(f)(g)(h) DESCRIPTION OF MONUMENT FOUND AT THIS CORNER AND IF IT WAS ACCEPTED, STATE ALL EVIDENCE (MATERIAL, TESTIMONIAL, OCCUPATIONAL, PLATS, RECORD, OTHER MONUMENTS) USED AS A BASIS FOR ESTABLISHING LOCATION. IF NOT ACCEPTED OR IF NOTHING WAS FOUND, STATE EVIDENCE USED AS BASIS FOR ESTABLISHING LOCATION. IF REESTABLISHED THROUGH LOST CORNER PROPORTIONATE METHODS, INDICATE ALL MONUMENTS, DISTANCES AND DIRECTIONS USED TO ESTABLISH. INDICATE TYPE OF MONUMENT AND SIGN POST FOUND OR SET.

December 10, 2018 - James D. Rein, PLS No. 1234, We are unable to recover any original or subsequent resurvey evidence for this meander corner, thus I determine it to be lost and re-establish it by setting an Oneida County capped 1" diameter x 60' long aluminum monument on a line between the corner common to Sections 7, 8, 17 and 18 and the meander corner near the northerly shore of Malby Lake located on the line common to Sections 7 and 8. We referenced the corner monument by a guard post and bearing trees as shown in the plan.

(c)(d)(e) PLAN VIEW OF CORNER WITH TIES TO AT LEAST 4 WITNESS MONUMENTS. IF IN DISAGREEMENT WITH PREVIOUSLY ESTABLISHED CORNER, SHOW THE DISTANCE BETWEEN THE TWO CORNERS AND ALSO INDICATE THE TIES TO THE DISPUTED CORNER.



(i) I, JAMES D. REIN, PROFESSIONAL LAND SURVEYOR NO. S-1234 HEREBY CERTIFY THAT THE CORNER LOCATION ON THIS RECORD WAS DETERMINED BY ME OR UNDER MY DIRECTION AND CONTROL AND THAT THIS U.S. PUBLIC LAND SURVEY MONUMENT RECORD IS CORRECT AND COMPLETE TO THE BEST OF MY KNOWLEDGE AND BELIEF.



James D. Rein
SIGNATURE

12-27-18
DATE

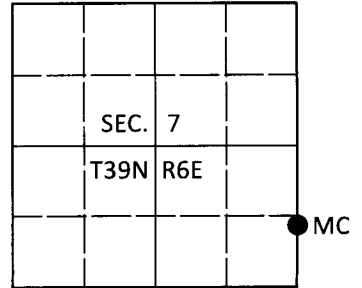
INDEX NO. H-J 5
3906070800

U.S. PUBLIC LAND SURVEY MONUMENT RECORD

Note: This form is intended and designed to fulfill all requirements of Wisconsin Administrative Code, Chapter A-E 7.08 U.S. Public Land Survey Monument Record (3)(a-i).

(a) CORNER LOCATION
 Meander Cor. of Secs. 7 & 8
 Township 39 North
 Range 6 East of the 4th P.M.
 Town of Minocqua
 County of Oneida

WISCRS - Oneida County
 N: 252,592.66 USft
 E: 170,701.69 USft
 Datum: NAD 83(2011)
 GNSS Method: RTN - Direct
 GNSS Control: WISCORS VRS



(b) HISTORY OF ORIGINAL CORNER ESTABLISHMENT

Original Surveyor:

Original Accessories:

Date of Survey Commenced:
 Completed:

See previous USPLS Monument Record

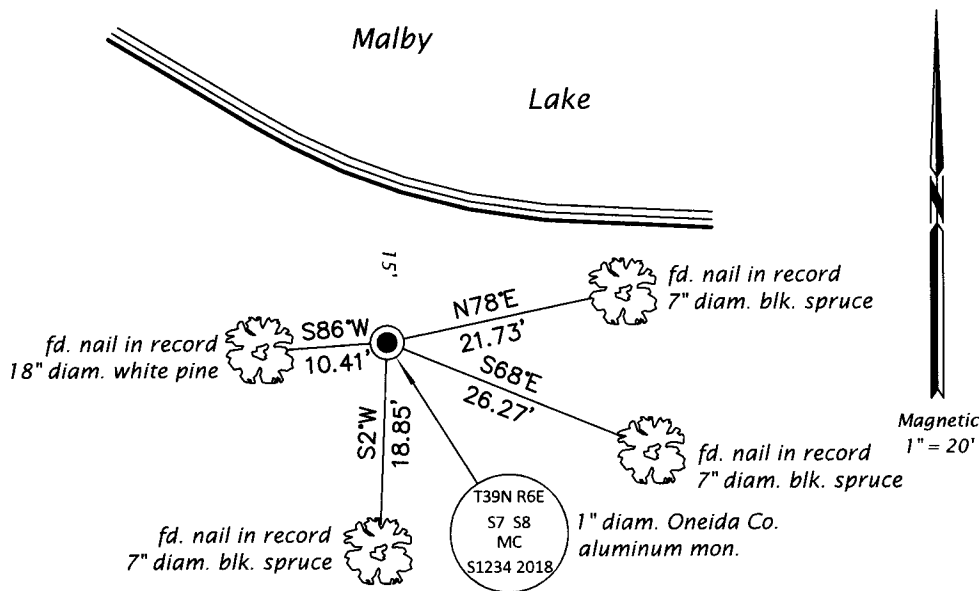
(b)(f)(g)(h) Description of monument found at this corner and if it was accepted, state all evidence (material, testimonial, occupational, plats, records, other monuments) used as a basis for accepting. If not accepted or if nothing was found, state evidence used as basis for establishing location. If re-established through lost corner proportionate methods, indicate all monuments, distances and directions used to establish. Indicate type of monument and sign post found or set.

This is a perpetuation of a previous USPLS Monument Record by James D. Rein, RLS dated Dec. 27, 2018 and filed in the office of the Oneida County Register of Deeds. A complete history of the corner can be found on the previous monument record. I accept the previous location as a true and faithful perpetuation or reestablishment of the original corner location and further perpetuate it as follows.

Mar. 20, 2019: I found and accepted the record monument, a 1" diam. aluminum pipe with a 2-1/2" diam. Oneida Co. aluminum cap projecting 12" above the bog surface. I found or established accessories as shown below. I found a white vinyl sign post bearing North, 1.0 ft.

The coordinate value shown has been verified by at least one of the following methods: 1) comparison to a previously GPS determined published value; 2) the value is the average of two or more GPS observations at a markedly different time; 3) one or more distances were measured back to the GPS observed corner from temporary GPS observed offset locations.

(c)(d)(e) Plan view of corner with ties to at least 4 witness monuments. If in disagreement with previously established corner, show the distances between the two corners and also indicate the ties to the disputed.



REGISTER OF DEEDS OFFICE
 ONEIDA COUNTY
 FILED

APR 10 2019

KYLE J. FRANSON
 REGISTER OF DEEDS

(i) I, Jeffrey W. Austin, Professional Land Surveyor No. S-1885, hereby certify that the corner location on this record was determined by me or under my direction and control and that this U.S. Public Land Survey Monument Record is correct and complete to the best of my knowledge and belief.

[Handwritten Signature]
 Signature

1 APR 2019
 Date