

# U.S. PUBLIC LAND SURVEY MONUMENT RECORD

Note: This form is intended and designed to fulfill all requirements of the Wisconsin Administrative Code, Chapter A-E 7.08 U.S. Public Land Monument Record (3)(a)(b)(c)(d)(e)(f)(g)(h)(i). An additional sheet may be added if necessary to conform with said requirements.

REGISTER OF DEEDS OFFICE  
ONEIDA COUNTY  
FILED

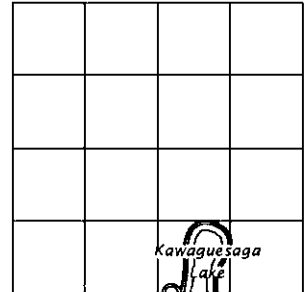
MAY 04 2016

(a) CORNER LOCATION: COORDINATES  
W. Meander Corner of Sections 9 & 10 North:  
Township 39 North East:  
Range 6 East Control Station:  
Town of Minocqua Latitude:  
County of Oneida Longitude:  
Datum:  
Method:

AT \_\_\_\_\_ O'CLOCK \_\_\_\_\_ M  
KYLE J. FRANSON  
REGISTER OF DEEDS

( RECORDING AREA)

SECTION 9



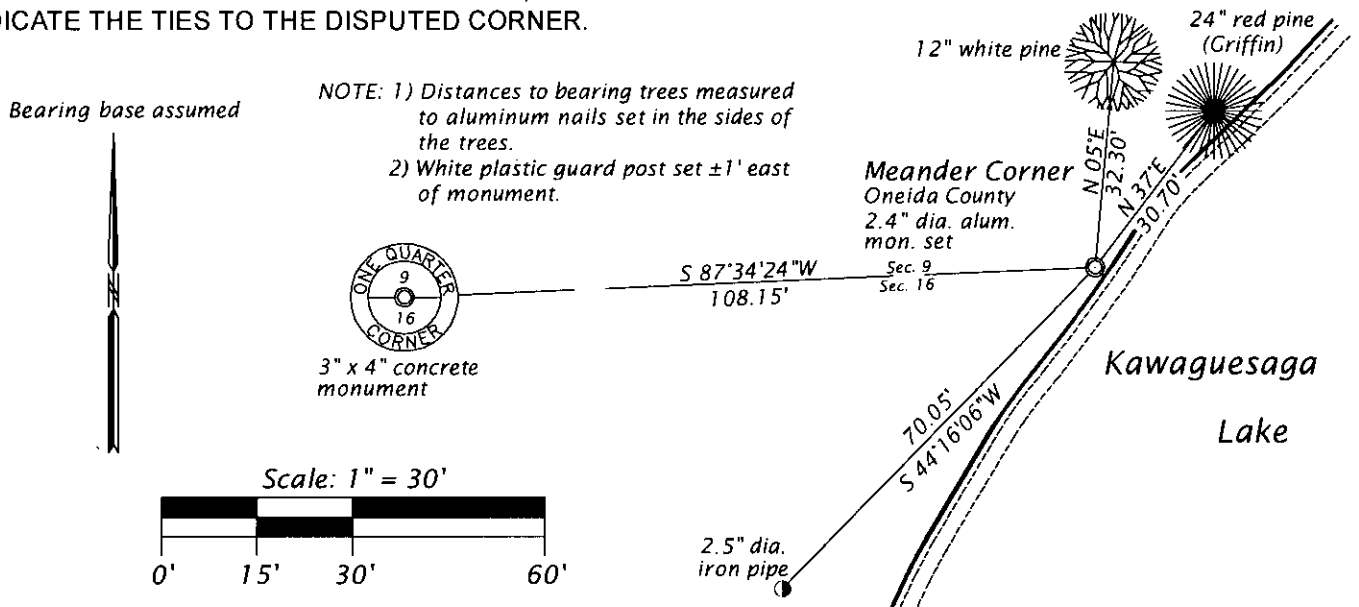
(b) HISTORY OF ORIGINAL CORNER ESTABLISHMENT

Original Surveyor: Alexander Anderson  
Date of Survey: Commenced Oct. 13, 1863  
Completed Oct. 23, 1863  
Original B.T.'S: Birch 5", N 19°W, 9 lks.  
Birch 6", S 87°W, 33 lks.

(f)(g)(h) DESCRIPTION OF MONUMENT FOUND AT THIS CORNER AND IF IT WAS ACCEPTED, STATE ALL EVIDENCE (MATERIAL, TESTIMONIAL, OCCUPATIONAL, PLATS, RECORDS, OTHER MONUMENTS) USED AS A BASIS FOR ESTABLISHING LOCATION. IF NOT ACCEPTED OR IF NOTHING WAS FOUND, STATE EVIDENCE USED AS BASIS FOR ESTABLISHING LOCATION. IF REESTABLISHED THROUGH LOST CORNER PROPORTIONATE METHODS, INDICATE ALL MONUMENTS, DISTANCES AND DIRECTIONS USED TO ESTABLISH. INDICATE TYPE OF MONUMENT AND SIGN POST FOUND OR SET.

- 1967 - October 1967, James G. Griffin, platted Neville's Pleasant View Subdivision. They show a concrete monument found in place at the meander corner location. BT.: 16" N. Pine, N 38°E, 30.0'.
- 1972 - August 1972, John H. Fisher, performs a survey in Section 9 and show a concrete monument at the meander corner location. BT.: 16" N. Pine, N 38°E, 30.0'
- 2015 - December 24, 2015, James D. Rein, while surveying the Public Landing in Section 16, found and accepted a 4.5" sq. concrete monument, broken and laid over, at the meander corner location. The red pine bt still present. I replaced the concrete monument with an Oneida County flanged-bottom aluminum monument, 2.4" dia. x 30" long. See below for reference ties.

(c)(d)(e) PLAN VIEW OF CORNER WITH TIES TO AT LEAST 4 WITNESS MONUMENTS. IF IN DISAGREEMENT WITH PREVIOUSLY ESTABLISHED CORNER, SHOW THE DISTANCE BETWEEN THE TWO CORNERS AND ALSO INDICATE THE TIES TO THE DISPUTED CORNER.



(i) I, JAMES D. REIN, PROFESSIONAL LAND SURVEYOR NO. S-1234 HEREBY CERTIFY THAT THE CORNER LOCATION ON THIS RECORD WAS DETERMINED BY ME OR UNDER MY DIRECTION AND CONTROL AND THAT THIS U.S. PUBLIC LAND SURVEY MONUMENT RECORD IS CORRECT AND COMPLETE TO THE BEST OF MY KNOWLEDGE AND BELIEF.

*James D. Rein*  
SIGNATURE 12-24-15  
DATE



3906090019

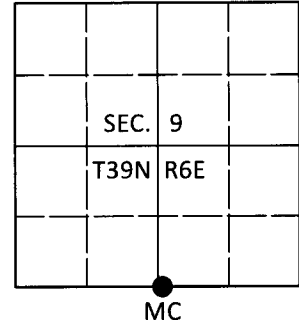
INDEX NO. 511-12

# U.S. PUBLIC LAND SURVEY MONUMENT RECORD

Note: This form is intended and designed to fulfill all requirements of Wisconsin Administrative Code, Chapter A-E 7.08 U.S. Public Land Survey Monument Record (3)(a-i).

(a) CORNER LOCATION  
 Meander Cor. of Secs. 9 & 16  
 Township 39 North  
 Range 6 East of the 4th P.M.  
 Town of Minocqua  
 County of Oneida

WISCRS - Oneida County  
 N: 251,757.60 USft  
 E: 178,770.49 USft  
 Datum: NAD 83(2011)  
 GNSS Method: RTN - Offset  
 GNSS Control: WISCORS VRS



(b) HISTORY OF ORIGINAL CORNER ESTABLISHMENT

Original Surveyor:

Original Accessories:

Date of Survey Commenced:  
 Completed:

See previous USPLS Monument Record

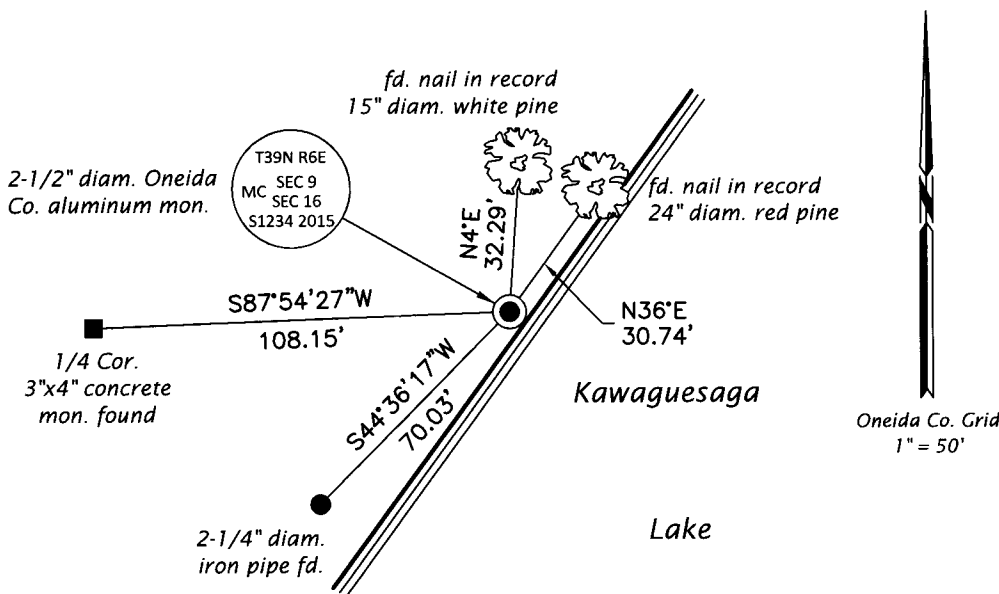
(b)(f)(g)(h) Description of monument found at this corner and if it was accepted, state all evidence (material, testimonial, occupational, plats, records, other monuments) used as a basis for accepting. If not accepted or if nothing was found, state evidence used as basis for establishing location. If re-established through lost corner proportionate methods, indicate all monuments, distances and directions used to establish. Indicate type of monument and sign post found or set.

*This is a perpetuation of a previous USPLS Monument Record by James D. Rein, RLS dated Dec. 24, 2015 and filed in the office of the Oneida County Register of Deeds. A complete history of the corner can be found on the previous monument record. I accept the previous location as a true and faithful perpetuation or reestablishment of the original corner location and further perpetuate it as follows.*

*Mar. 19, 2019: I found and accepted the record monument, a 2-1/2" diam. aluminum pipe with a 3-1/4" diam. Oneida Co. aluminum cap flush with the ground surface. I found or established accessories as shown below. I found a white vinyl sign post bearing East, 1.0 ft.*

*The coordinate value shown has been verified by at least one of the following methods: 1) comparison to a previously GPS determined published value; 2) the value is the average of two or more GPS observations at a markedly different time; 3) one or more distances were measured back to the GPS observed corner from temporary GPS observed offset locations.*

(c)(d)(e) Plan view of corner with ties to at least 4 witness monuments. If in disagreement with previously established corner, show the distances between the two corners and also indicate the ties to the disputed.

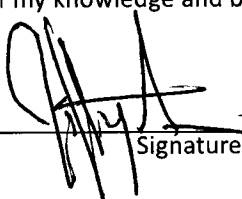


REGISTER OF DEEDS OFFICE  
 ONEIDA COUNTY  
 FILED

APR 10 2019

KYLE J. FRANSON  
 REGISTER OF DEEDS

(i) I, Jeffrey W. Austin, Professional Land Surveyor No. S-1885, hereby certify that the corner location on this record was determined by me or under my direction and control and that this U.S. Public Land Survey Monument Record is correct and complete to the best of my knowledge and belief.

  
 Signature

1 APR 2019  
 Date

3906090019 (INDEX NO. J-11,12)