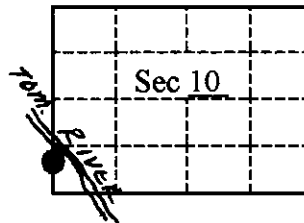


U S PUBLIC LAND SURVEY MONUMENT RECORD

Note: This form is intended and designed to fulfill all requirements of Wisconsin Administrative Code, Chapter A-E 7.08 U.S. Land Survey Monument Record (3)(a)(b)(c)(d)(e)(f)(g)(h)(i). An additional sheet may be added if necessary to conform with said requirements.

(a) CORNER LOCATION State Plane Coordinates
 Witness Mean Corner of Sec 10 X _____
 Township 39 North Y _____
 Range 6 East Datum Base _____
 Town Minocqua County of Oneida



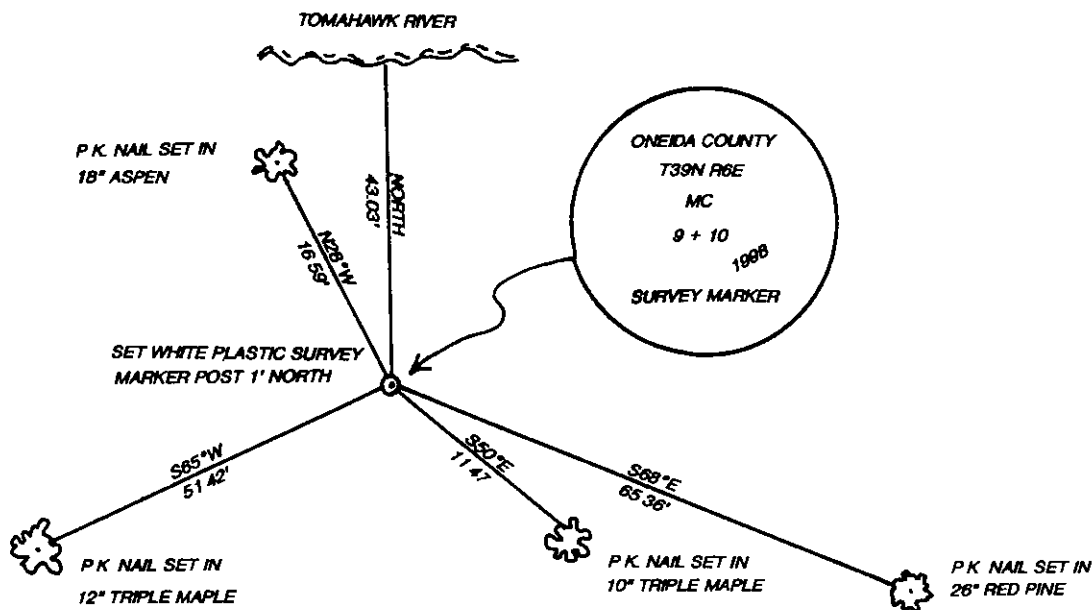
(b) HISTORY OF ORIGINAL CORNER ESTABLISHMENT Original B T 's

Original Surveyor Alex Anderson 10" Hemlock, N77°W, 30 lks
 Date of Survey Commenced Oct, 1863 5" Birch, S48°E, 22 lks
 Completed Oct, 1863

(b)(f)(g)(h) Description of monument found at this corner and if it was accepted, state all evidence (material, testimonial, occupational, plats, records, other monuments) used as a basis for accepting. If not accepted or if nothing was found, state evidence used as basis for establishing location. If reestablished through lost corner proportionate methods, indicate all monuments, distances and directions used to establish. Indicate type of monument and sign post found or set.

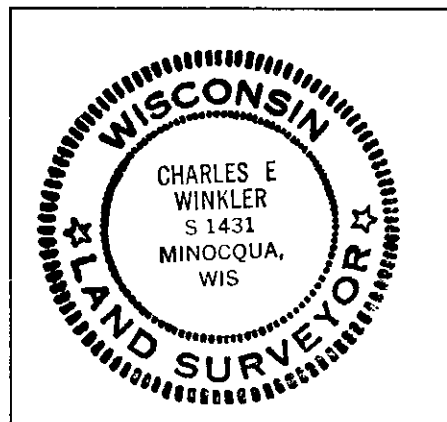
- 1959 - E F Kowalke set iron pipe and post on line between southwest section corner and west 1/4 corner and tied to a 9" Twin Birch bearing N48°E, 2 3'
- 1963 - Northwoods Surveyors (Griffin) found an iron pipe witnessed by a 6" W Birch, N48°E, 2 4'
- 1978 - Wilderness Surveyors found a 1" iron pipe and set a 2" iron pipe 8 97' south on section line to protect from erosion
- 1998 - I found the 2" iron pipe previously set by Wilderness and replaced said iron pipe with an Oneida County aluminum monument as a witness to the meander corner, now out

(c)(d)(e) Plan view of corner with ties to at least 4 witness monuments. If in disagreement with previously established corner, show the distances between the two corners and also indicate the ties to the disputed



(i) I, Charles E Winkler, S- 1431 hereby certify that the corner location on this record was determined by me or under my direction and control and that this U.S. Public Land Survey Monument Record is correct and complete to the best of my knowledge and belief.

Signature Charles E. Winkler Date 5/11/1999
 Foltz & Associates, Inc



3906090400

Index No. H-5-13