

U.S. PUBLIC LAND SURVEY MONUMENT RECORD

REGISTER OF DEEDS OFFICE
ONEIDA COUNTY
FILED

OCT 10 2019

Note: This form is intended and designed to fulfill all requirements of the Wisconsin Administrative Code, Chapter A-E 7.08 U.S. Public Land Monument Record (3)(a)(b)(c)(d)(e)(f)(g)(h)(i). An additional sheet may be added if necessary to conform with said requirements.

KYLE J. FRANSON
REGISTER OF DEEDS

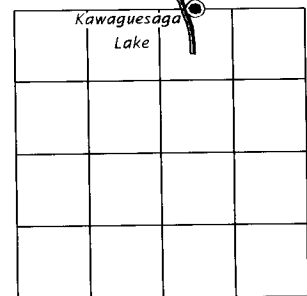
(a) CORNER LOCATION:

Witness Meander Corner of Section 15
Township 39 North
Range 6 East
Town of Minocqua
County of Oneida

North:
East:
Datum:
GNSS Method:
GNSS Control:

(RECORDING AREA)

SECTION 15



(b) HISTORY OF ORIGINAL CORNER ESTABLISHMENT

Original Surveyor: Alexander Anderson
Date of Survey: Commenced October 13, 1863
Completed October 23, 1863
Original B.T.'S: yellow pine, 8", S 50°E, 98 lks. (64.68')
yellow pine, 24", N 20°E, 278 lks. (183.48')

(f)(g)(h) DESCRIPTION OF MONUMENT FOUND AT THIS CORNER AND IF IT WAS ACCEPTED, STATE ALL EVIDENCE (MATERIAL, TESTIMONIAL, OCCUPATIONAL, PLATS, RECORD, OTHER MONUMENTS) USED AS A BASIS FOR ESTABLISHING LOCATION. IF NOT ACCEPTED OR IF NOTHING WAS FOUND, STATE EVIDENCE USED AS BASIS FOR ESTABLISHING LOCATION. IF REESTABLISHED THROUGH LOST CORNER PROPORTIONATE METHODS, INDICATE ALL MONUMENTS, DISTANCES AND DIRECTIONS USED TO ESTABLISH. INDICATE TYPE OF MONUMENT AND SIGN POST FOUND OR SET.

March 17, 1903 - B. F. Dorr, Oneida County Surveyor: Old Field Book 4A, page 141, Dorr - Vaughan Book, page 226; 19.28 chains west of east meander corner between Sections 10 and 15 found original Y. Pine stp. 14", N20°E, 278 lks, marked rotted off; original Y. Pine stp. 8", S57 1/2°E, 98 lks.

September 1, 1936 - Harry C. Hall, Oneida County Surveyor: Hall's Field Book 33, page 38 in Vilas County records; SW cor. Lot 4, Sec. 10-39-6, found car axle, Orig. Cor. Y. Pine stump, 24" N11°15'E, 176.1 feet. Original corner about 26 feet west of axle; New bt's, Y. Pine 13", N48°20'E, 56 feet, and a Y. Pine 12", S63°30'E, 69.5 feet

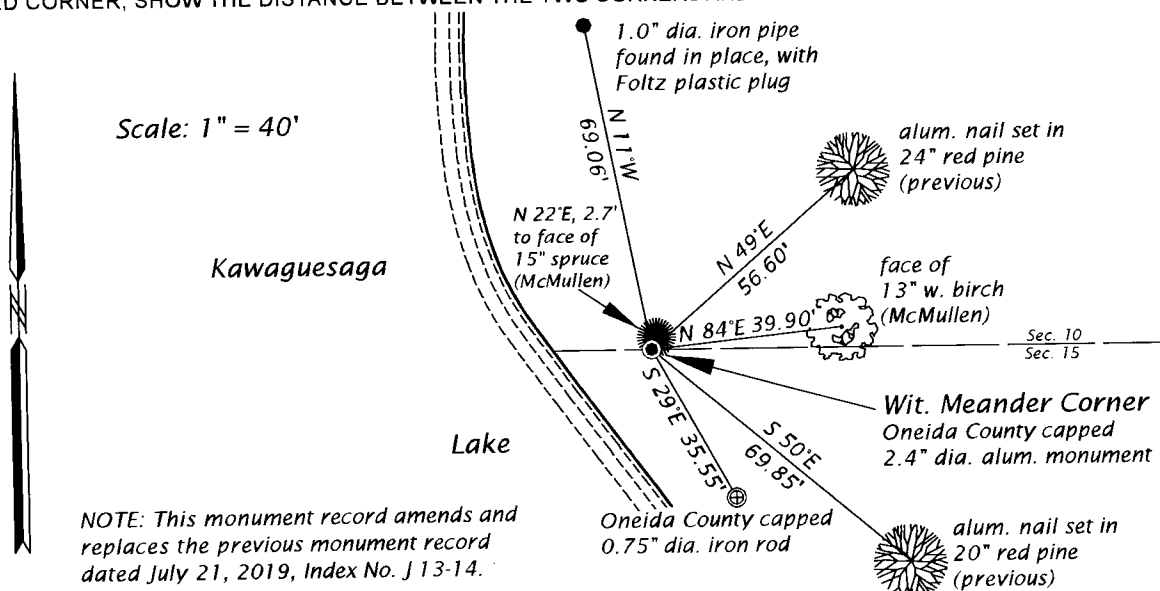
May 31 - June 1, 1948 - Walter A. Hennig, Surveyor: Field Book 6, page 2; Found axle shaft referenced by a Norway Pine 14", S62°E, 69.5 feet; and a Norway Pine 18", N47°E, 55.5 feet

March 20 and 21, 1953 - E. F. Kowalke, Surveyor: Field Book 11, page 16; Found auto axle shaft referenced by Nor. Pine 22", N48°E, 55.4 feet, and a Nor. Pine 22", S60°E, 69 feet

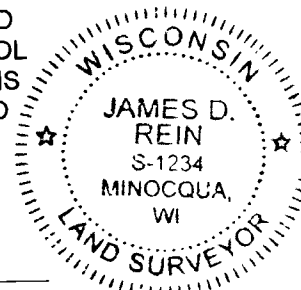
Sept. 12, 1989 - David F. McMullen, RLS 1340: not filed monument record, "Found 1 1/2" iron pipe with old axle along side of it" "Replaced iron pipe with an Oneida County capped 2 1/2" dia. alum pipe" and made ties as shown on his plan. (This record was not available at the time of our original field survey.

March 22, 2019 - James D. Rein, PLS No. 1234: we recovered an Oneida County capped 2.4" aluminum monument, referenced by a 24" unmarked Red Pine, N 49°E, 56.60 feet, and a 20" unmarked Red Pine, S 50°W, 69.85 feet. We returned to corner on July 18, 2019, and made additional ties to McMullen's bearing trees as shown in this plan.

(c)(d)(e) PLAN VIEW OF CORNER WITH TIES TO AT LEAST 4 WITNESS MONUMENTS. IF IN DISAGREEMENT WITH PREVIOUSLY ESTABLISHED CORNER, SHOW THE DISTANCE BETWEEN THE TWO CORNERS AND ALSO INDICATE THE TIES TO THE DISPUTED CORNER.



(i) I, JAMES D. REIN, PROFESSIONAL LAND SURVEYOR NO. S-1234 HEREBY CERTIFY THAT THE CORNER LOCATION ON THIS RECORD WAS DETERMINED BY ME OR UNDER MY DIRECTION AND CONTROL AND THAT THIS U.S. PUBLIC LAND SURVEY MONUMENT RECORD IS CORRECT AND COMPLETE TO THE BEST OF MY KNOWLEDGE AND BELIEF.



[Handwritten Signature]
SIGNATURE

11-02-19
DATE

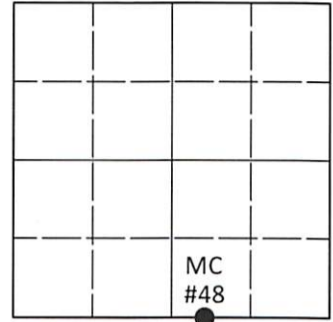
INDEX NO. J 15-16
39061000-16

U.S. PUBLIC LAND SURVEY MONUMENT RECORD

Note: This form is intended and designed to fulfill all requirements of Wisconsin Administrative Code, Chapter A-E 7.08 U.S. Public Land Survey Monument Record (3)(a-i).

(a) CORNER LOCATION
 Meander Cor. of Secs. 10 & 15
 Township 39 North
 Range 6 East of the 4th P.M.
 Town of Minocqua
 County of Oneida

WISCRS - Oneida County
 N: 251,318.34 USft
 E: 184,347.70 USft
 Datum: NAD 83(2011) ep. 2010.00
 GNSS Method: RTN - Offset
 GNSS Control: WISCORS VRS



Sec. 10, T. 39 N., R. 6 E.

(b)(f)(g)(h) Description of monument found at this corner and if it was accepted, state all evidence (material, testimonial, occupational, plats, records, other monuments) used as a basis for accepting. If not accepted or if nothing was found, state evidence used as basis for establishing location. If re-established through lost corner proportionate methods, indicate all monuments, distances and directions used to establish. Indicate type of monument and sign post found or set.

This record is a perpetuation of the following land corner document(s):

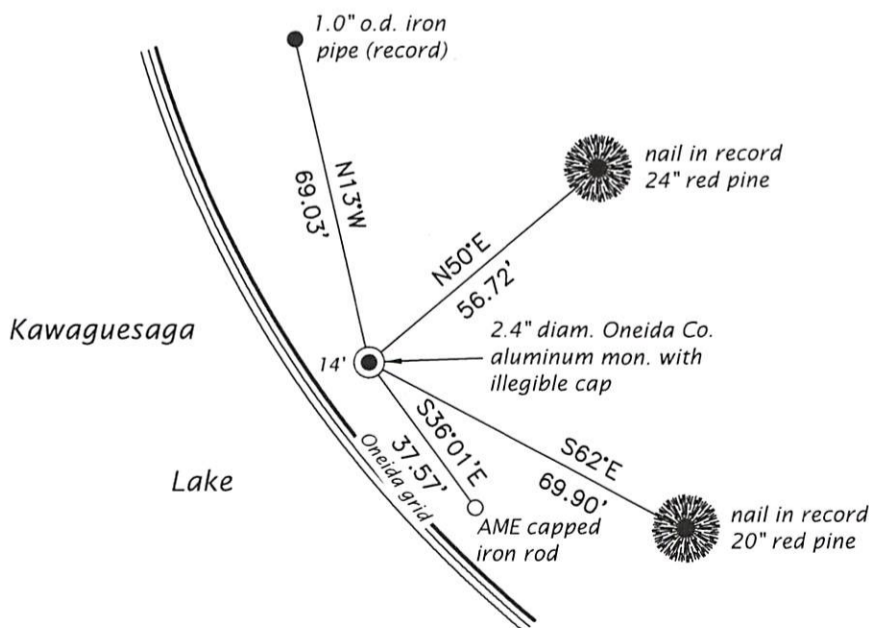
Nov. 2, 2019: USPLS Monument Record by James D. Rein, filed in Oneida County

A complete history of the corner can be found on the previous land corner document(s). I accept the record activity as a true and faithful perpetuation or reestablishment of the original corner location and further perpetuate it as described below.

Feb. 15, 2022: I found and accepted the record monument, a 2.4" diam. aluminum pipe, firmly set, with a 3.3" diam. Oneida Co. aluminum cap flush with the ground surface. Both of McMullen's trees are in place as depicted on Rein's record. I found or established accessories as indicated below. I was unable to set a sign post due to frost.

The coordinate value shown has been determined by traversing from two or more offset points, the coordinates of which are the result of GNSS observations.

(c)(d)(e) Plan view of corner with ties to at least 4 witness monuments. If in disagreement with previously established corner, show the distances between the two corners and also indicate the ties to the disputed.



REGISTER OF DEEDS OFFICE
 ONEIDA COUNTY
 FILED

MAR 07 2022

KYLE J. FRANSON
 REGISTER OF DEEDS

(i) I, Jeffrey W. Austin, Professional Land Surveyor No. S-1885, hereby certify that the corner location on this record was determined by me or under my direction and control and that this U.S. Public Land Survey Monument Record is correct and complete to the best of my knowledge and belief.

[Handwritten Signature]
 Signature

FEB. 22, 2022
 Date