

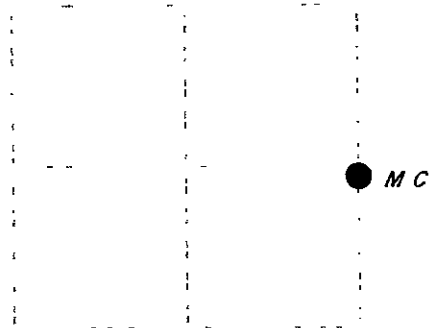
U. S. PUBLIC LAND SURVEY MONUMENT RECORD

Note: This form is intended and designed to fulfill all requirements of Wisconsin Administrative Code, Chapter A-E 7.49 U.S. Public Land Survey Monument Record (3)(a)(b), (c)(d)(e)(f)(g)(h)(i). An additional sheet may be added if necessary to conform with said requirements.

(a) Corner location: Township 39 North
Range 6 East

Town of Minocqua

Oneida County, Wisconsin



Section 10

(b)(1)(A) Description of monument found at this corner and if it was accepted, state all evidence (material, testimonial, occupational, plats, records, other monuments) used as a basis for accepting. If not accepted or if nothing was found, state evidence used as basis for establishing location. If reestablished through lost corner proportionate methods, indicate all monuments, distances and directions used to establish. Indicate type of monument found or set and sign post.

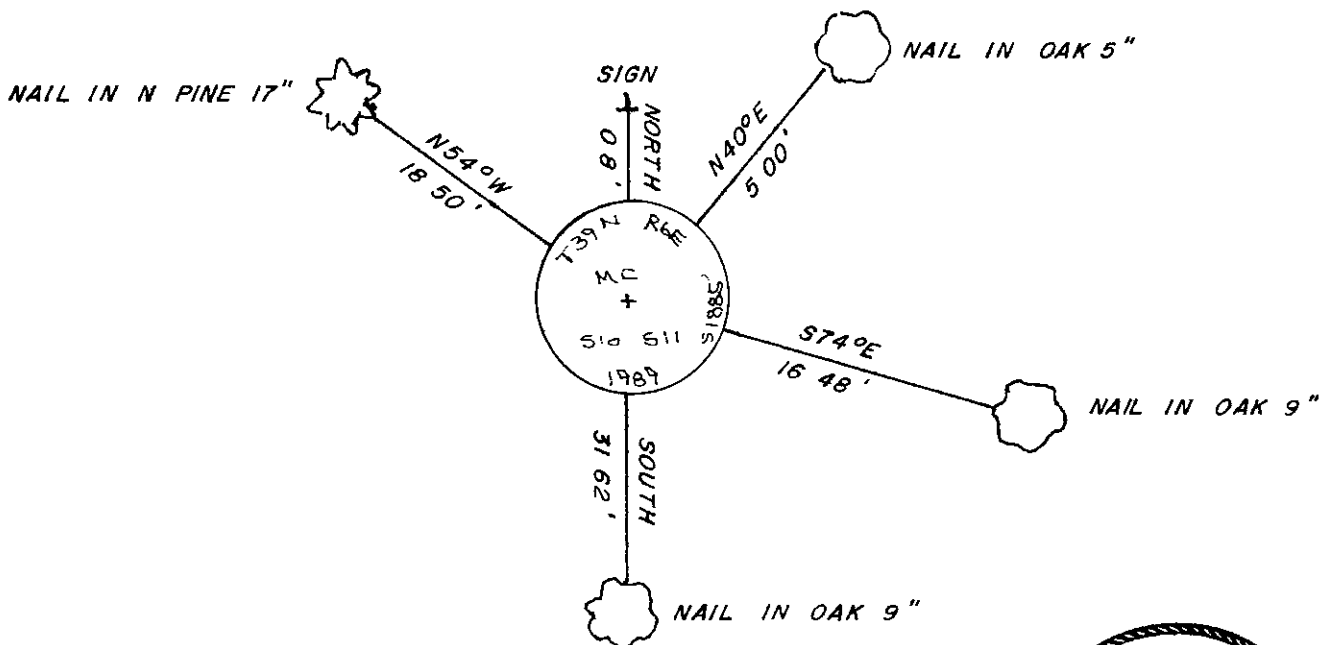
October, 1883: Alexander Anderson set a wood post: N.Pine 20° S47-1 2°W, 9 lks. E.Oak 10° S45°E, 15 lks.

December, 1877: Map 8-409 Northwoods Surveyors accepts iron pipe. N.Pine 15° N60°W, 18.2 .

7-10-85, 5-22-87, 7-20-87 John H. Fisher and Associates certified survey maps show corner as 3/4" iron rod: N.Pine 15° N55°W, 18.2

November 30, 1989. I found and accepted a 3/4" dia. 36" long iron rod and replaced rod with 2-1/2" dia. 30" long aluminum pipe with 3-1/4" dia. aluminum tablet stamped as shown below. I established the following witnesses: set nail in N.Pine 17° N54°W, 18.5" , set nail in Oak 9" South, 31.62 , set nail in Oak 9" S74°E, 16.48 , set nail in Oak 5" N40°E, 5.00 , set plastic sign post North, 0.8 , Bullhead Lake North, 20". Bearing trees were blazed with only snow blaze.

(c)(1)(a) Plan view of corner with ties to at least four witness monuments. If in disagreement with previously established corner, show the distances between the two corners and also indicate the ties to the disputed corner.



I, Jeffrey W. Austin, Registered Land Surveyor S-1885 certify that the corner location on this record was determined by me or under my direction and control and that this U.S. Public Land Survey Monument Record is correct and complete to the best of my knowledge and belief.

Jeffrey W. Austin

JANUARY 23, 1990



INDEX NO 36-17

3906101800