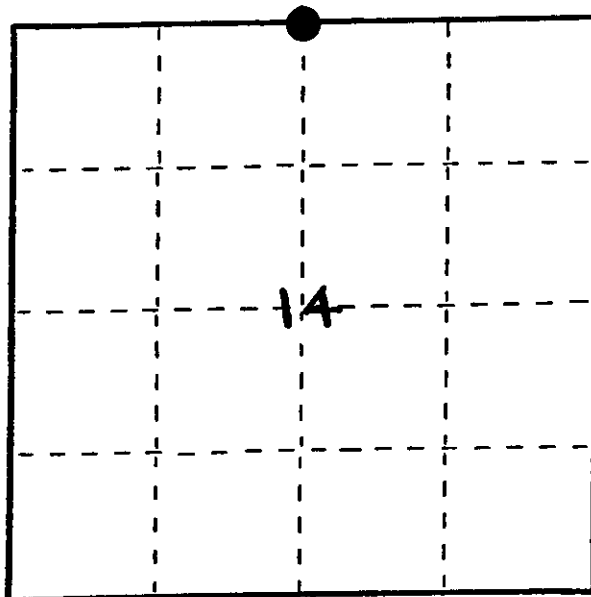


State of Wisconsin }
County of ONEIDA } ss.

I DAVID W. DIONNE, do hereby certify that on the 3RD day of JANUARY, 1985, I found evidence of the NORTH ONE-QUARTER corner of SECTION 14 Township 39, North, Range EAST, Fourth Principal Meridian, as described hereon, and that from this evidence I established a new monument and accessories as described hereon to perpetuate the original location of this corner.

Resident witnesses:

TERRY GOLDING



● = Corner monument restored.

U. S. Public Land Survey Monument Record

Index No. J-19

History of original corner establishment

Original corner was established in the course of the subdivision of T39N, R6E, which commenced Oct. 15, 1863 and was completed Oct. 23, 1863 by Alexander ANDERSON, Deputy Surveyor.

Original bearing trees:

Tamarac 5" S50 1/2 E, 18.71ks.
W. Pine 9" N45 1/2 E, 31.51ks.

Description of corner evidence found:

Leaning wood post scribed 1/4 S.

Description of monument and accessories I established to perpetuate the original location of this corner.

SET stamped Oneida County Monument and witness as shown in sketch. (See reverse)

Dated at _____, Wis, this _____ day of _____, 19__

Signature _____ Title ONEIDA County Surveyor. Registration No. _____
(County Surveyor, Registered Land Surveyor, or other duly authorized official)

Office of Register of Deeds, County of Oneida I hereby certify that the within instrument was filed in this office for record on the 12 day of June, 1986 at 8:20 o'clock A. M.

Christophe Kuehn
(Register of Deeds)

By Cyrus A. Pires Deputy

390610020

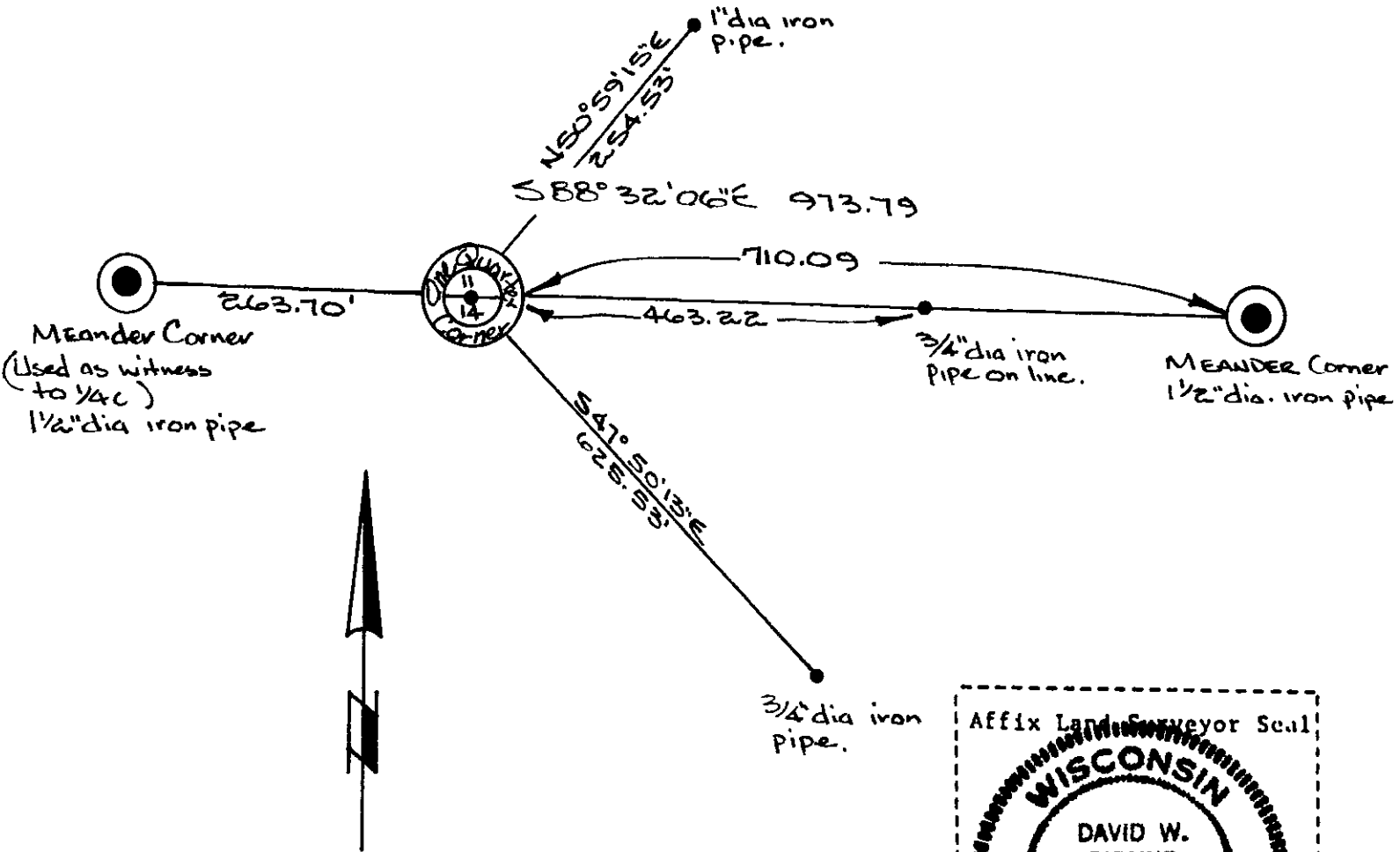
Describe any material discrepancy between the location of the corner as restored or reestablished and the location of that corner as previously restored or reestablished by distance and direction. Show the discrepancy on the plan view drawing under (d), above. Show the distances between the corner as previously restored or reestablished and (1) the corner as restored or reestablished, and (2) to at least 2 of the witness monuments shown on the drawing in (d), above.

See sketch below.

Was the corner restored through acceptance of (1) an obliterated evidence location, or, (2) a found perpetuated location?

Corner was restored by control established in a survey by J. D. Rein, R.L.S. # 5-1234, dated April 10, 1978. Wood post had slumped from position established in that survey. Oneida County monument set in calculated position.

Was the corner reestablished through lost corner proportionate methods? If so, show the method, including the directions and distances to other public land survey corners used as evidence or used for proportioning in determining the corner location?



I, David W. Dionne
 (Type or print name) certify that the corner location shown on this record was determined by me or under my direction and control and that this U.S. Public Land Survey Monument Record is correct and complete to the best of my knowledge and belief.

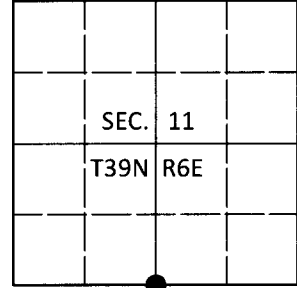
David W. Dionne 1/4/85
 Signature Date

U.S. PUBLIC LAND SURVEY MONUMENT RECORD

Note: This form is intended and designed to fulfill all requirements of Wisconsin Administrative Code, Chapter A-E 7.08 U.S. Public Land Survey Monument Record (3)(a-i).

(a) CORNER LOCATION
 1/4 Cor. of Secs. 11 & 14
 Township 39 North
 Range 6 East of the 4th P.M.
 Town of Minocqua
 County of Oneida

WISCRS - Oneida County
 N: 251,260.28 USft
 E: 189,357.33 USft
 Datum: NAD 83(2011)
 GNSS Method: RTN - Direct
 GNSS Control: WISCORS VRS



(b) HISTORY OF ORIGINAL CORNER ESTABLISHMENT

Original Surveyor:

Original Accessories:

Date of Survey Commenced:
 Completed:

See previous USPLS Monument Record

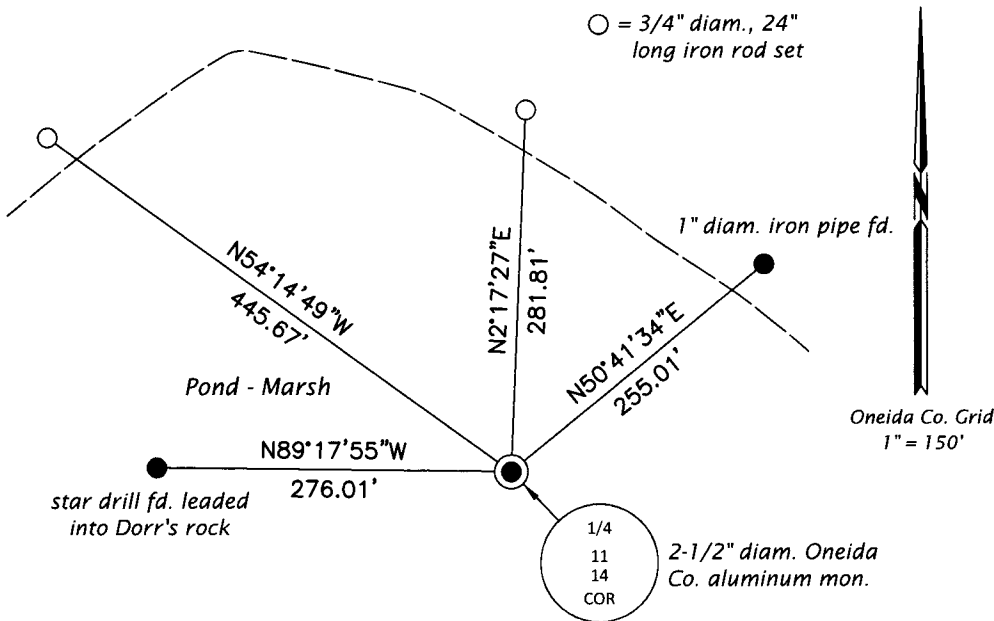
(b)(f)(g)(h) Description of monument found at this corner and if it was accepted, state all evidence (material, testimonial, occupational, plats, records, other monuments) used as a basis for accepting. If not accepted or if nothing was found, state evidence used as basis for establishing location. If re-established through lost corner proportionate methods, indicate all monuments, distances and directions used to establish. Indicate type of monument and sign post found or set.

This is a perpetuation of a previous USPLS Monument Record by David W. Dionne, RLS dated Jan. 3, 1985 and filed in the office of the Oneida County Register of Deeds. A complete history of the corner can be found on the previous monument record. I accept the previous location as a true and faithful perpetuation or reestablishment of the original corner location and further perpetuate it as follows.

Mar. 19, 2019: I found and accepted the record monument, a 2-1/2" diam. aluminum pipe with a 3-1/4" diam. Oneida Co. aluminum cap flush with the marsh surface. I found or established accessories as shown below. I found a 4" sq. cedar sign post bearing South, 1.0 ft.

The coordinate value shown has been verified by at least one of the following methods: 1) comparison to a previously GPS determined published value; 2) the value is the average of two or more GPS observations at a markedly different time; 3) one or more distances were measured back to the GPS observed corner from temporary GPS observed offset locations.

(c)(d)(e) Plan view of corner with ties to at least 4 witness monuments. If in disagreement with previously established corner, show the distances between the two corners and also indicate the ties to the disputed.



REGISTER OF DEEDS OFFICE
 ONEIDA COUNTY
 FILED

APR 10 2019

KYLE J. FRANSON
 REGISTER OF DEEDS

(i) I, Jeffrey W. Austin, Professional Land Surveyor No. S-1885, hereby certify that the corner location on this record was determined by me or under my direction and control and that this U.S. Public Land Survey Monument Record is correct and complete to the best of my knowledge and belief.


 Signature

1 APR 2019
 Date