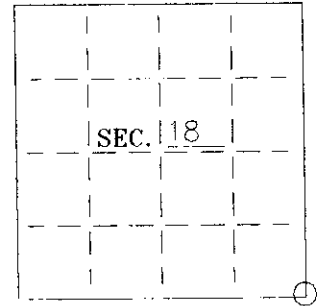


# U. S. PUBLIC LAND SURVEY MONUMENT RECORD

Note: This form is intended and designed to fulfill all requirements of Wisconsin Administrative Code—Chapter A-E 7.08 U. S. Public Land Survey Monument Record (3)(a)(b)(c)(d)(e)(f)(g)(h)(i). An additional sheet may be added if necessary to conform with said requirements.

(a) CORNER LOCATION: State Plane Coordinates  
SE corner of Sec. 18 X \_\_\_\_\_  
 Township 39 North Y \_\_\_\_\_  
 Range 06 East Datum Base \_\_\_\_\_  
 Town/~~XXX~~ Minocqua County of Oneida



(b) HISTORY OF ORIGINAL CORNER ESTABLISHMENT:  
 Original Surveyor: Alexander Anderson  
 Date of Survey: Commenced Oct 15, 1863  
 Completed Oct 23, 1863

Original B.T.'S

Aspen	9"	S18 1/2°E	9 Links
Birch	8"	S28°W	21 Links

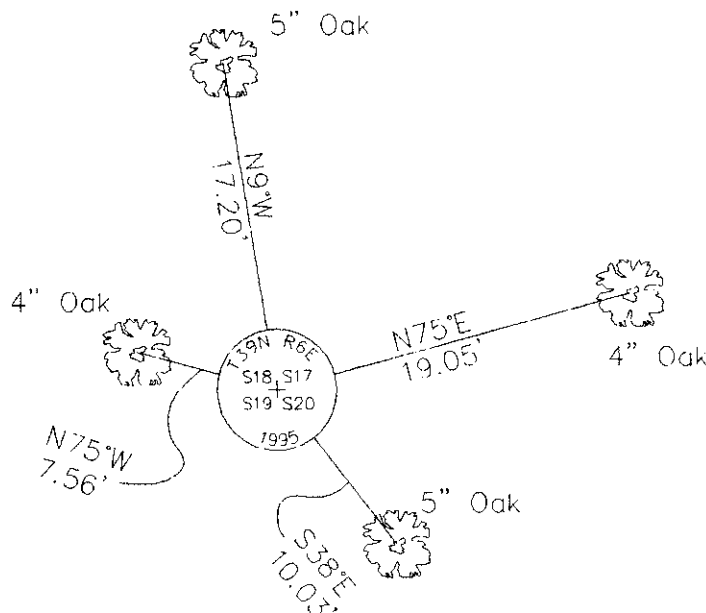
(b)(f)(g)(h) Description of monument found at this corner and if it was accepted—state all evidence (material—testimonial—occupation—plats—records—other monuments) used as a basis for accepting. If not accepted or if nothing was found state evidence used as basis for establishing location. If reestablished through lost corner proportionate methods indicate all monuments—distances and directions used to establish. Indicate type of monument and sign post found or set.

March 11, 1989—William Stuth Map—References old 8" Maple N62°E 18.0', 6" Maple S28°E 10.0', 8" Maple N62°E 18.0'.

October 10, 1995—Found 2" Iron Pipe and downed wood post and two old BT's; 10" scribed White Pine snag N65°W 26.1' and clump of Maple stumps N73°E 19'(Stuth).

Accepted 2" Iron Pipe and replaced it with a 2-1/2" dia. by 30" long, aluminum capped Oneida County Monument.  
 Set plastic sign post 1-1/2' North.

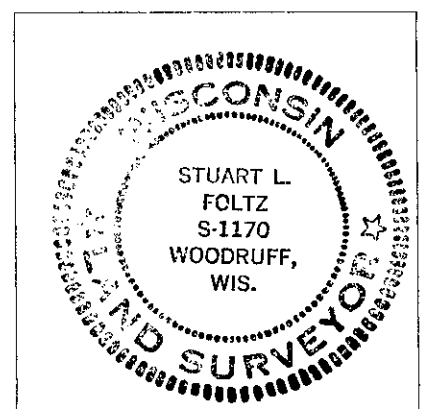
(c)(d)(e) Plan view of corner with ties to at least 4 witness monuments. If in disagreement with previously established corner—show the distances between the two corners and also indicate the ties to the disputed.



Set 16d galvanized nails in side of bearing trees.  
 Placed survey marker plaque on front of bearing trees.

(i) I Stuart L. Foltz  
 hereby certify that the corner location on this record was determined by me or under my direction and control and that this U.S. Public Land Survey Monument Record is correct and complete to the best of my knowledge and belief.

Stuart L. Foltz 12-20-95  
 Signature Date



INDEX NO. N-5