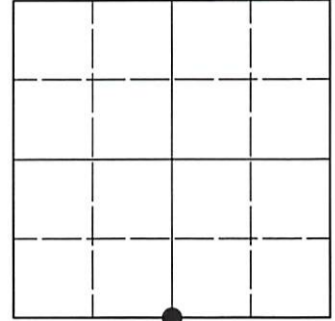


**U.S. PUBLIC LAND SURVEY MONUMENT RECORD**

Note: This form is intended and designed to fulfill all requirements of Wisconsin Administrative Code, Chapter A-E 7.08 U.S. Public Land Survey Monument Record (3)(a-i).

(a) CORNER LOCATION  
 1/4 Cor. of Secs. 19 & 30  
 Township 39 North  
 Range 6 East of the 4th P.M.  
 Town of Minocqua  
 County of Oneida

WISCORS - Oneida County  
 N: 240,954.59 USft  
 E: 168,077.58 USft  
 Datum: NAD 83(2011) ep. 2010.00  
 GNSS Method: RTN - Direct  
 GNSS Control: WISCORS VRS



Sec. 19, T. 39 N., R. 6 E.

(b)(f)(g)(h) Description of monument found at this corner and if it was accepted, state all evidence (material, testimonial, occupational, plats, records, other monuments) used as a basis for accepting. If not accepted or if nothing was found, state evidence used as basis for establishing location. If re-established through lost corner proportionate methods, indicate all monuments, distances and directions used to establish. Indicate type of monument and sign post found or set.

October, 1863: GLO survey by Alexander Anderson, U.S. Deputy Surveyor. East corrected between Secs. 19 and 30, at 34.80 chs. set a wood post witnessed by: tamarack 7 N55°E, 10 lks.; cedar 5 S62°E, 10 lks.

November, 1982: On page 281 of NEPCO book 2, W.H. Stuth identifies corner as "iron pipe or cap by others."

January 21, 2002: On OCS map no. B-4948, James D. Rein identifies corner as 1" x 84" aluminum monument.

June 19, 2023: I found and accepted the record monument, a 1.0" diam. aluminum pipe, firmly set, with a 2.5" diam. Oneida Co. aluminum cap projecting 4" above the bog surface. The corner is in a very wet alder swamp with no other accessories available. I found or established accessories as indicated below. I found a white vinyl sign post bearing Southeast, 0.8 ft.

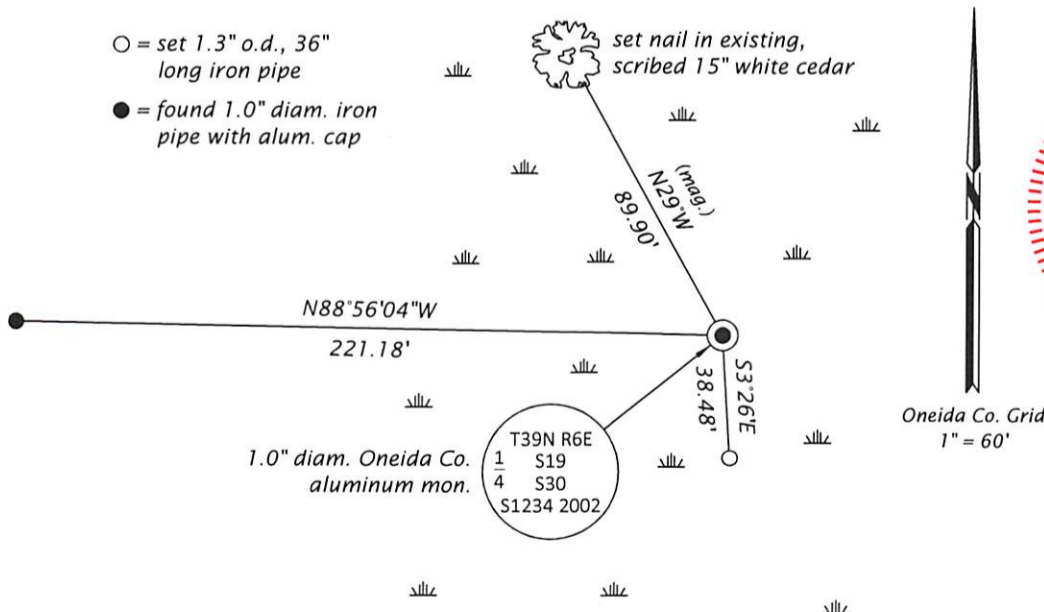
The coordinate value shown is the weighted mean of two or more GNSS observations at markedly different times satisfying the accuracy requirements defined and qualified in the 2022 Oneida County Fee Schedule for USPLS Corners.

REGISTER OF DEEDS OFFICE  
 ONEIDA COUNTY  
 FILED

JUL 06 2023

KYLE J. FRANSON  
 REGISTER OF DEEDS

(c)(d)(e) Plan view of corner with ties to at least 4 witness monuments. If in disagreement with previously established corner, show the distances between the two corners and also indicate the ties to the disputed.



(i) I, Jeffrey W. Austin, Professional Land Surveyor No. S-1885, hereby certify that the corner location on this record was determined by me or under my direction and control and that this U.S. Public Land Survey Monument Record is correct and complete to the best of my knowledge and belief.

  
 Signature

JULY 1, 2023  
 Date