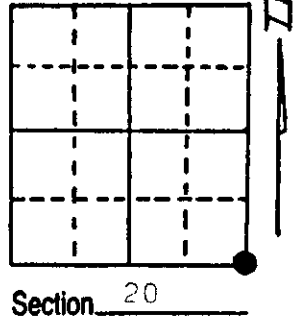


# U.S. PUBLIC LAND SURVEY MONUMENT RECORD

**Note:** This form is intended and designed to fulfill all requirements of Wisconsin Administrative Code, Chapter A-E 5.02, U.S. Public Land Survey Monument Record (3) (a) (b) (c) (d) (e) (f) (g) (h) (i). An additional sheet may be added if necessary to conform with said requirements. 39

(a) Corner location: Township \_\_\_\_\_ North  
 Range \_\_\_\_\_ East/West  
 Town/City/Village \_\_\_\_\_  
 County \_\_\_\_\_ Oneida



(b) (f) (g) (h) Description of monument found at this corner and if it was accepted, state all evidence (material, testimonial, occupational, plats, records, other monuments) used as a basis for accepting. If not accepted or if nothing was found, state evidence used as basis for establishing location. If reestablished through lost corner proportionate methods, indicate all monuments, distances and directions used to establish.

Found and accepted 3"x4"x37' concrete monument and old wood post scribed S20 S21 S28 S29. (Monument called for in abutting subdivision). Also next to monument : 2"x43" iron pipe (removed), 1/2"x1 1/2"x36" iron bar(removed).

Existing PTs:

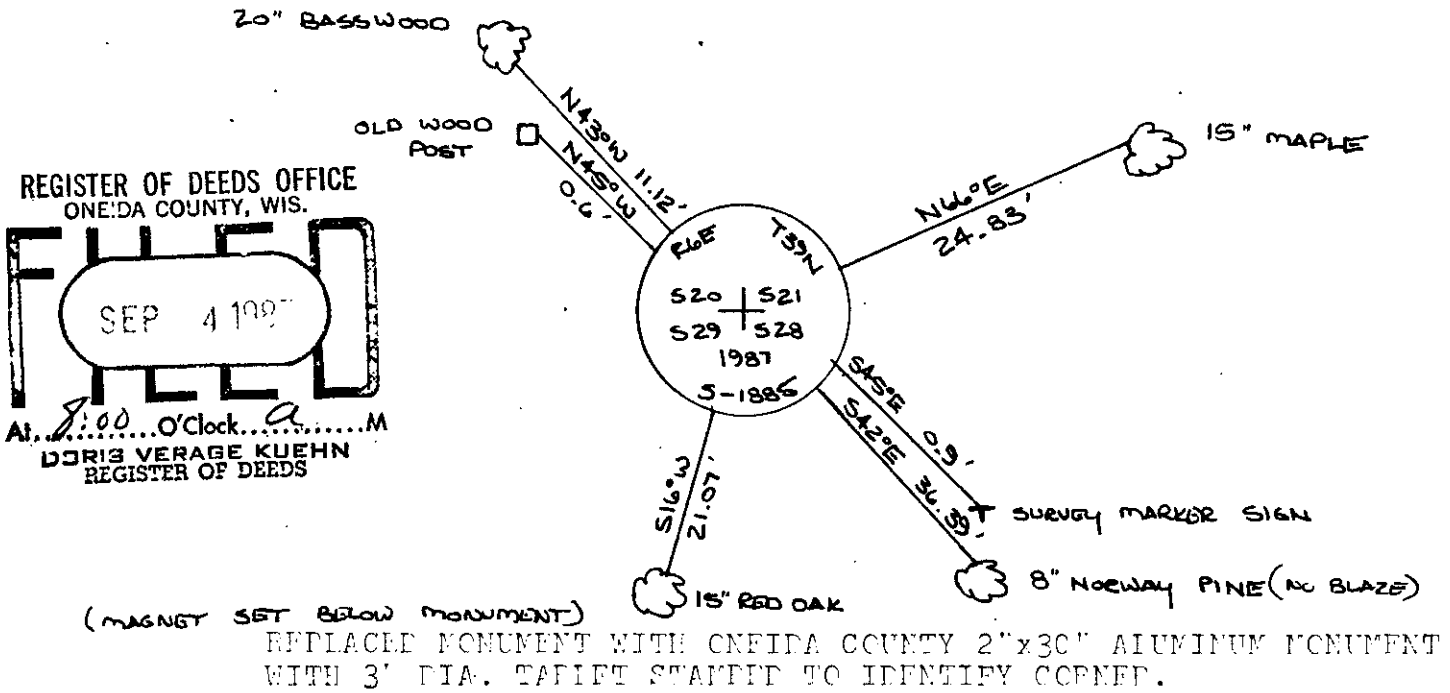
- Passwood 20" (used for new PT)
- Red Oak 15' (used for new PT)
- Maple? (dead) S64°E 24.5'
- Maple 15' (used for new PT)
- Red Oak 12" West 9.5'

Original survey performed by Alexander Anderson in October, 1863.

Wood post set: Yellow Pine 10" N68°E 17 links  
 Aspen 10" N38°W 33 links

(c) (d) (e) Plan view of corner with ties to at least 4 witness monuments. If in disagreement with previously established corner, show the distances between the two corners and also indicate the ties to the disputed corner.

Fearing trees scribed and blazed - distances to nail in tree.



REGISTER OF DEEDS OFFICE  
 ONEIDA COUNTY, WIS.  
**FILED**  
 SEP 4 1987  
 At 8:00 O'Clock  
 DORIS VERAGE KUEHN  
 REGISTER OF DEEDS

(MAGNET SET BELOW MONUMENT)  
 REPLACE MONUMENT WITH ONEIDA COUNTY 2"x30" ALUMINUM MONUMENT WITH 3" DIA. TAPEIT STAMPED TO IDENTIFY CORNER.

(i) I, Jeffrey W. Austin  
 (type or print name) certify that the corner location on this record was determined by me or under my direction and control and that this U.S. Public Land Survey Monument Record is correct and complete to the best of my knowledge and belief.

Signature [Signature] Date 8-30-87



Index No. R9

390620 0000