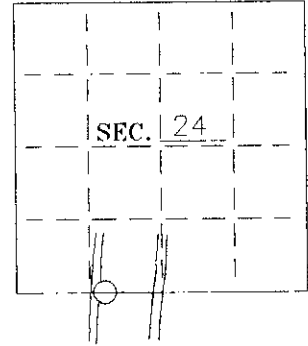


U. S. PUBLIC LAND SURVEY MONUMENT RECORD

Note: This form is intended and designed to fulfill all requirements of Wisconsin Administrative Code-Chapter A-E 7.08 U. S. Public Land Survey Monument Record (3)(a)(b)(c)(d)(e)(f)(g)(h)(i). An additional sheet may be added if necessary to conform with said requirements.

(a) CORNER LOCATION:
 W. MC corner of Sec. 24
 S. Line 39 North
 Range 06 East
 Town/R~~XX~~ Minocqua

State Plane Coordinates
 X _____
 Y _____
 Datum Base _____
 County of Oneida



(b) HISTORY OF ORIGINAL CORNER ESTABLISHMENT:
 Original Surveyor: Alexander Anderson
 Date of Survey: Commenced October 15, 1863
 Completed October 23, 1863

Original B.T.'S

Birch 5" S27 1/2°W 30 lks
 Aspen 5" N11 1/2°W 14 lks

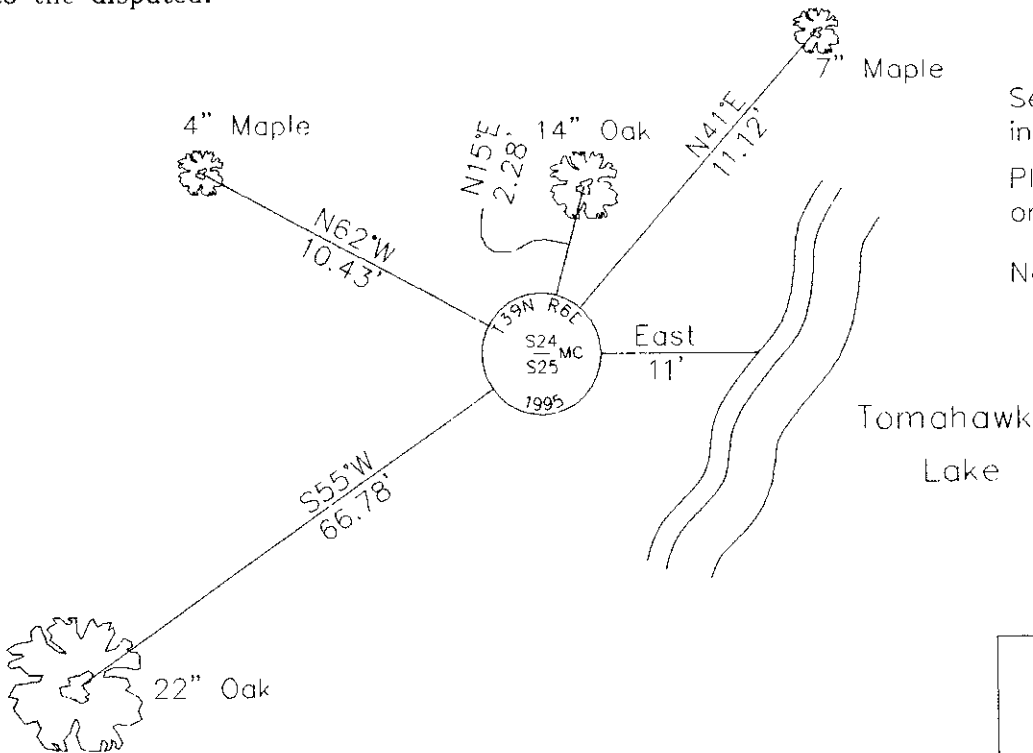
(b)(f)(g)(h) Description of monument found at this corner and if it was accepted--state all evidence (material--testimonial--occupation--plats--records--other monuments) used as a basis for accepting. If not accepted or if nothing was found state evidence used as basis for establishing location. If reestablished through lost corner proportionate methods indicate all monuments--distances and directions used to establish. Indicate type of monument and sign post found or set.

May 1966--William Cameron map--references 3/4" iron pipe as Meander Corner and shows a 1-1/2" iron pipe S23°-11'W, 115.0'.

October 18, 1995--found 3/4" iron pipe witnessed by Cameron's 1-1/2" iron pipe and red top: S23°W, 115'.

Accepted the location of the 3/4" iron pipe and replaced it with a 2-1/2" dia. by 30" long aluminum-capped Oneida County monument. Set plastic signpost 1-1/2' northeast.

(c)(d)(e) Plan view of corner with ties to at least 4 witness monuments. If in disagreement with previously established corner--show the distances between the two corners and also indicate the ties to the disputed.



Set 16d galvanized nails in side of bearing trees.

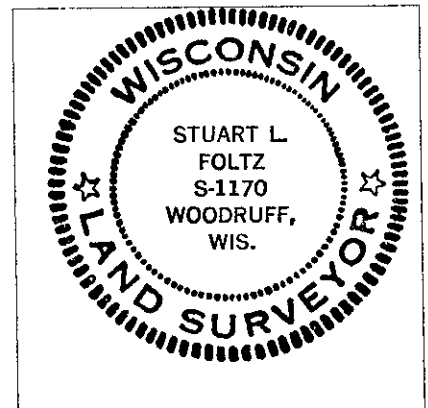
Placed survey marker plaque on front of bearing trees.

Note: Bearing trees have not been blazed.

(i) I Stuart L. Foltz
 hereby certify that the corner location on this record was determined by me or under my direction and control and that this U.S. Public Land Survey Monument Record is correct and complete to the best of my knowledge and belief.

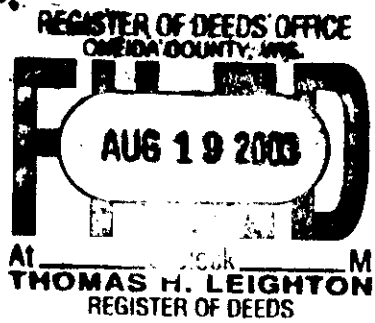
Stuart L. Foltz
 Signature

12-20-95
 Date



INDEX NO. R-22/23

3906240028



This form is intended to fulfill the requirements of Chapter A-E7.08 (3)(a) thru (i) U.S. Public Land Survey Monument Location Record, Wisconsin Administrative Code. Use the reverse side of form for continuation.

U.S. PUBLIC LAND SURVEY MONUMENT LOCATION RECORD

Recorders Data

USPLS CORNER: WEST WIT MC SECTION: 25 TOWNSHIP: 39 NORTH RANGE: 6 EAST
 NAME OF WATERWAY FOR M.C. CORNER : LAKE TOMAHAWK SECTION LINE: NORTH
 (CITY)(VILLAGE)(TOWN) OF: MINOCQUA COUNTY OF: ONEIDA

Description of monument found or placed and all other evidence used as the basis for monument location; including monuments and measurements required if the corner location was reestablished by lost corner proportionate methods. Also indicate name of the original surveyor, original survey date and the corner monument, bearing trees, witness or other reference monuments established, including measured bearing and distance ties, from available survey records.

Found and accepted a plumb and stable standard 2" dia. aluminum pipe monument with Oneida County cap stamped in 1995 by an unknown surveyor; also a standard white poly 'T' marker post 11" NE; corner falls about 10 feet West of existing lakeshore bearing N10°E at NE corner of an improved lake lot at Fire No. 7896 Avis Lane.

In October 1863, Alexander Anderson/GLO set a wood post as the original corner and noted OBTs: a 5" Bw S27.5°W 30 links and a 5" Aspen N11.5°W 14 links; all now obliterated.

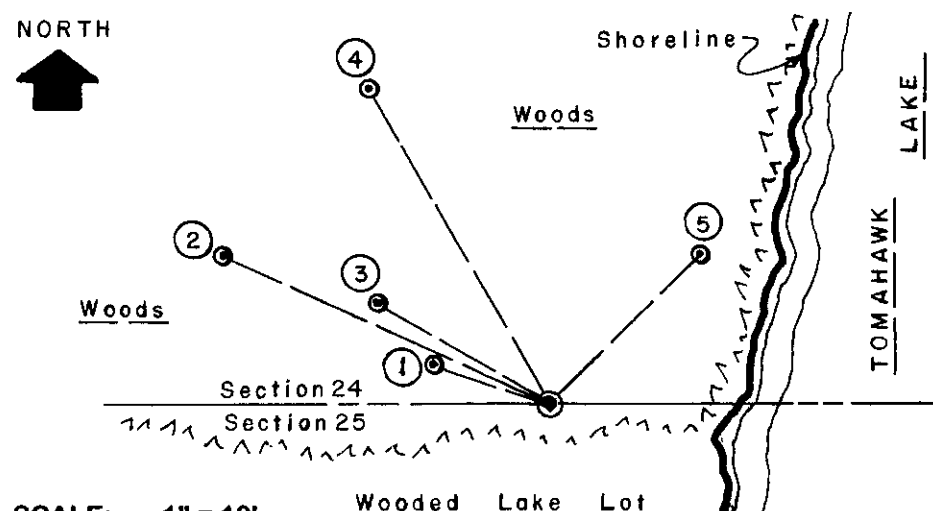
In 1978, John Fisher/RLS 836 notes a 1" iron pipe at this corner per Volume 2 of Certified Survey Maps Page 522, Volume 2 of Certified Survey Maps Page 523 and Plat of Survey L-118 in Oneida County records; no BT ties noted.

In 1978, James Marquardt/RLS 1405 notes a 1" iron pipe at this corner per plats of survey filed as A-267 and A-274 in Oneida County survey records and also in 1980 per Plat of Survey L-284 and Volume 3 of Certified Survey Maps Page 781 in Oneida County records; no BT ties noted.

In December 2001, Jeff Austin/RLS 1885 notes a standard Oneida County aluminum monument found at this corner per Plat of Survey filed as A-1082 in Oneida County survey records; no BT ties noted.

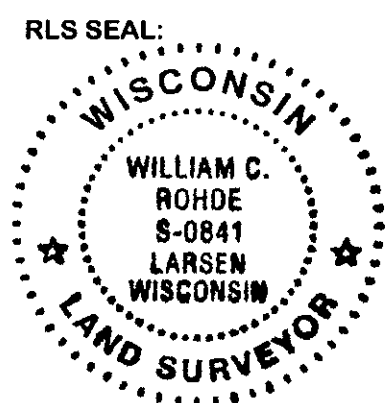
This recovery completed June 11, 2003; there were no direct witnesses.

Plan view map of monument location with bearing and distance ties to a minimum of four(4) described witness or reference monuments of concrete, natural stone, iron, live bearing trees or equivalent material. If applicable, also show a minimum of two(2) bearing and distance ties to any other monument found and not accepted; including the bearing and distance from the accepted monument.



- WITNESS MONUMENT TIES:**
- ① New 9" Mr BT N70°W 6.48'.
 - ② New 10" Mr BT N65°W 18.58'.
 - ③ Old 5.5" Mr with 20d nail in lower right face N60°W 10.30'.
 - ④ New 6" twin Mr N30°W 18.92'.
 - ⑤ Old 9" Mr BT with 20d nail in lower right face N45°E 11.01'.
- All new ties to my usual PKnail/washer in lower right face. I flagged all BTs, the corner monument and 'T' marker post with blaze orange tape.

SCALE: 1" = 10'
 Unless otherwise indicated, all bearing tree ties are to a .25" dia. by 2.5" long PK nail with a 1.25" dia. steel washer driven into unblazed right face and a .25" dia. by 2.5" long PK nail with a 2" dia. steel washer stamped BT is also driven into unblazed face of bearing tree at DBH; the basis for measured bearings is by compass to nearest degree and all tie distances are measured horizontal by steel tape corrected to nearest 1/100th feet at standard temperature of 68° F.



LAND SURVEYOR CERTIFICATE:
 I, William C. Rohde, hereby certify that I am duly licensed as a Professional Land Surveyor in the State of Wisconsin; that this USPLS monument location was determined by me and/or under my direct supervision and control; and that this U.S. Public Land Survey Monument Location Record is true and correct to the best of my knowledge and belief.
 Signed: *William C. Rohde*
 William C. Rohde RLS 841

