

U.S. PUBLIC LAND SURVEY MONUMENT RECORD

REGISTER OF DEEDS OFFICE
ONEIDA COUNTY
FILED

JAN 28 2019

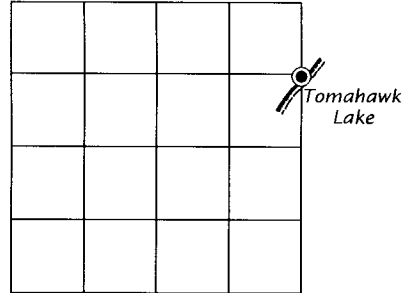
Note: This form is intended and designed to fulfill all requirements of the Wisconsin Administrative Code, Chapter A-E 7.08 U.S. Public Land Monument Record (3)(a)(b)(c)(d)(e)(f)(g)(h)(i). An additional sheet may be added if necessary to conform with said requirements.

KYLE J. FRAMON
REGISTER OF DEEDS

(a) CORNER LOCATION: WISCRS
North Meander Corner of Section 25 North:
Township 39 North East:
Range 6 East Datum:
Town of Minocqua GNSS Method:
County of Oneida GNSS Control:

(RECORDING AREA)

SECTION 25



(b) HISTORY OF ORIGINAL CORNER ESTABLISHMENT

Original Surveyor: Alfred Millard
Date of Survey: Commenced September 1860
Completed September 1860
Original B.T.'S: Tamarack 8° N 75°E 25 lks
Spruce 9° N 44°W 14 lks

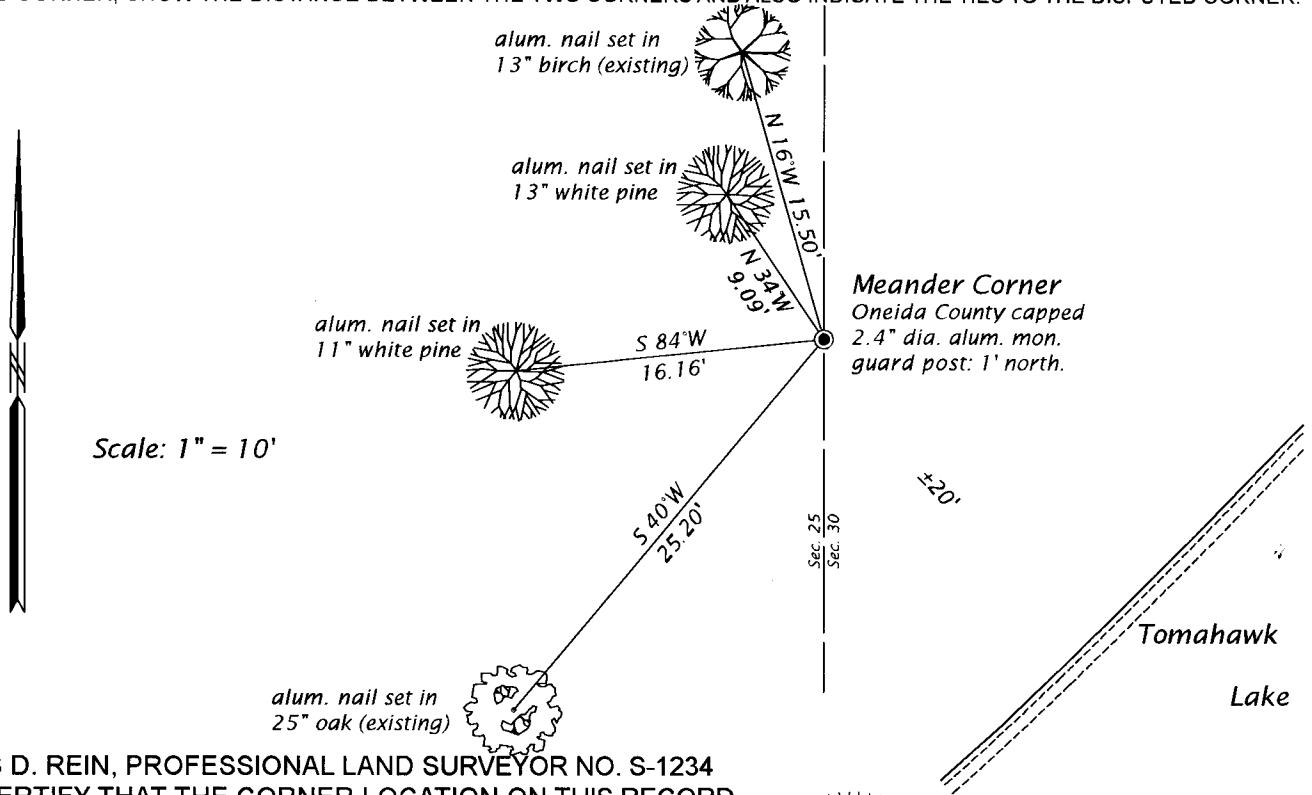
(f)(g)(h) DESCRIPTION OF MONUMENT FOUND AT THIS CORNER AND IF IT WAS ACCEPTED, STATE ALL EVIDENCE (MATERIAL, TESTIMONIAL, OCCUPATIONAL, PLATS, RECORD, OTHER MONUMENTS) USED AS A BASIS FOR ESTABLISHING LOCATION. IF NOT ACCEPTED OR IF NOTHING WAS FOUND, STATE EVIDENCE USED AS BASIS FOR ESTABLISHING LOCATION. IF REESTABLISHED THROUGH LOST CORNER PROPORTIONATE METHODS, INDICATE ALL MONUMENTS, DISTANCES AND DIRECTIONS USED TO ESTABLISH. INDICATE TYPE OF MONUMENT AND SIGN POST FOUND OR SET.

December 2, 1960 - Joseph C. Kirby, RLS No. 253, for Genisot Engineering Co., Dwg. No. 2698 map, filed as C2425 in the Oneida County Surveyor's Office, appears to indicate an iron pipe placed on line between the quarter corner common to Sections 25 and 30 and the corner common to Sections 19-24-25 and 30.

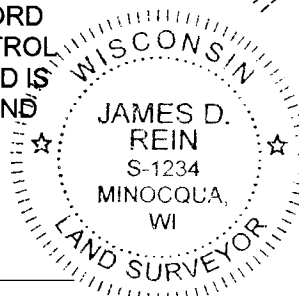
March 1, 1972 - John H. Fisher, RLS No. 836 - recorded plat of Point Clear, describes meander corner monumented by a 1 1/2" dia. iron pipe, referenced by bt's; a 10" W. Birch N 15°W, 15.5 feet, and by a 14" Oak bearing S40°W, 25.2 feet.

May 11, 2018 - James D. Rein, PLS No. 1234 - We recovered a 1 1/2" dia. x 38" long iron pipe, referenced by the Oak and W. Birch bt's., which I accept as the best evidence for the re-establishment of the original corner position. We replaced the pipe with capped 2.4" dia. x 30" long flange bottom aluminum monument and made new reference ties as below in plan.

(c)(d)(e) PLAN VIEW OF CORNER WITH TIES TO AT LEAST 4 WITNESS MONUMENTS. IF IN DISAGREEMENT WITH PREVIOUSLY ESTABLISHED CORNER, SHOW THE DISTANCE BETWEEN THE TWO CORNERS AND ALSO INDICATE THE TIES TO THE DISPUTED CORNER.



(i) I, JAMES D. REIN, PROFESSIONAL LAND SURVEYOR NO. S-1234 HEREBY CERTIFY THAT THE CORNER LOCATION ON THIS RECORD WAS DETERMINED BY ME OR UNDER MY DIRECTION AND CONTROL AND THAT THIS U.S. PUBLIC LAND SURVEY MONUMENT RECORD IS CORRECT AND COMPLETE TO THE BEST OF MY KNOWLEDGE AND BELIEF.



SIGNATURE *James D. Rein*

DATE 1-10-19

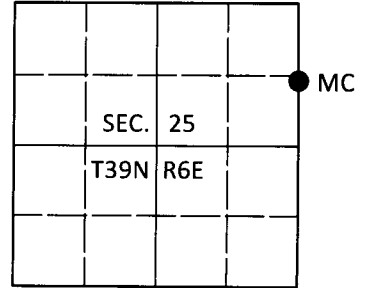
INDEX NO. S-T - 25
3906252900

U.S. PUBLIC LAND SURVEY MONUMENT RECORD

Note: This form is intended and designed to fulfill all requirements of Wisconsin Administrative Code, Chapter A-E 7.08 U.S. Public Land Survey Monument Record (3)(a-i).

(a) CORNER LOCATION
 Meander Cor. of Secs. 25 & 30
 Township 39 North
 Range 6 & 7 East of the 4th P.M.
 Town of Minocqua & Woodruff
 County of Oneida

WISCORS - Oneida County
 N: 239,696.60 USft
 E: 197,058.85 USft
 Datum: NAD 83(2011)
 GNSS Method: RTN - Offset
 GNSS Control: WISCORS VRS



(b) HISTORY OF ORIGINAL CORNER ESTABLISHMENT

Original Surveyor:

Original Accessories:

Date of Survey Commenced:
 Completed:

See previous USPLS Monument Record

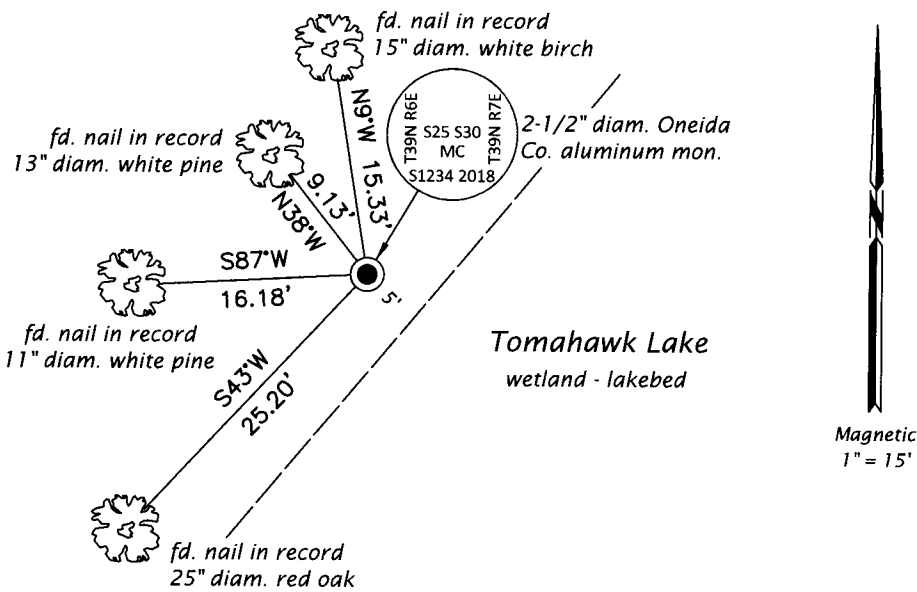
(b)(f)(g)(h) Description of monument found at this corner and if it was accepted, state all evidence (material, testimonial, occupational, plats, records, other monuments) used as a basis for accepting. If not accepted or if nothing was found, state evidence used as basis for establishing location. If re-established through lost corner proportionate methods, indicate all monuments, distances and directions used to establish. Indicate type of monument and sign post found or set.

This is a perpetuation of a previous USPLS Monument Record by James D. Rein, RLS dated Jan. 10, 2019 and filed in the office of the Oneida County Register of Deeds. A complete history of the corner can be found on the previous monument record. I accept the previous location as a true and faithful perpetuation or reestablishment of the original corner location and further perpetuate it as follows.

Mar. 17, 2019: I found and accepted the record monument, a 2-1/2" diam. aluminum pipe with a 3-1/4" diam. Oneida Co. aluminum cap projecting 4" above the ground surface. I found or established accessories as shown below. I found a white vinyl sign post bearing North, 1.0 ft.

The coordinate value shown has been verified by at least one of the following methods: 1) comparison to a previously GPS determined published value; 2) the value is the average of two or more GPS observations at a markedly different time; 3) one or more distances were measured back to the GPS observed corner from temporary GPS observed offset locations.

(c)(d)(e) Plan view of corner with ties to at least 4 witness monuments. If in disagreement with previously established corner, show the distances between the two corners and also indicate the ties to the disputed.

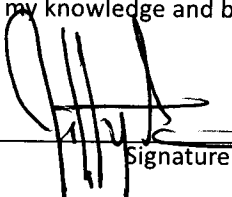


REGISTER OF DEEDS OFFICE
 ONEIDA COUNTY
 FILED

APR 10 2019

KYLE J. FRANSON
 REGISTER OF DEEDS

(i) I, Jeffrey W. Austin, Professional Land Surveyor No. S-1885, hereby certify that the corner location on this record was determined by me or under my direction and control and that this U.S. Public Land Survey Monument Record is correct and complete to the best of my knowledge and belief.


 Signature

1 APR 2019
 Date