

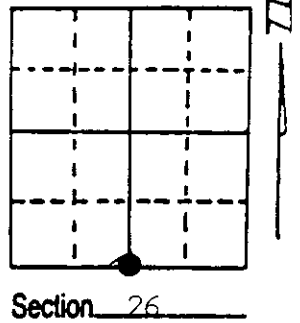
# U.S. PUBLIC LAND SURVEY MONUMENT RECORD

Note: This form is intended and designed to fulfill all requirements of Wisconsin Administrative Code, Chapter A-E 7.08 U.S. Public Land Survey Monument Record (3) (a) (b) (c) (d) (e) (f) (g) (h) (i). An additional sheet may be added if necessary to conform with said requirements.

(a) Corner location: Township 39 North  
 Range 6 East/West

Town/City/Village Minocqua

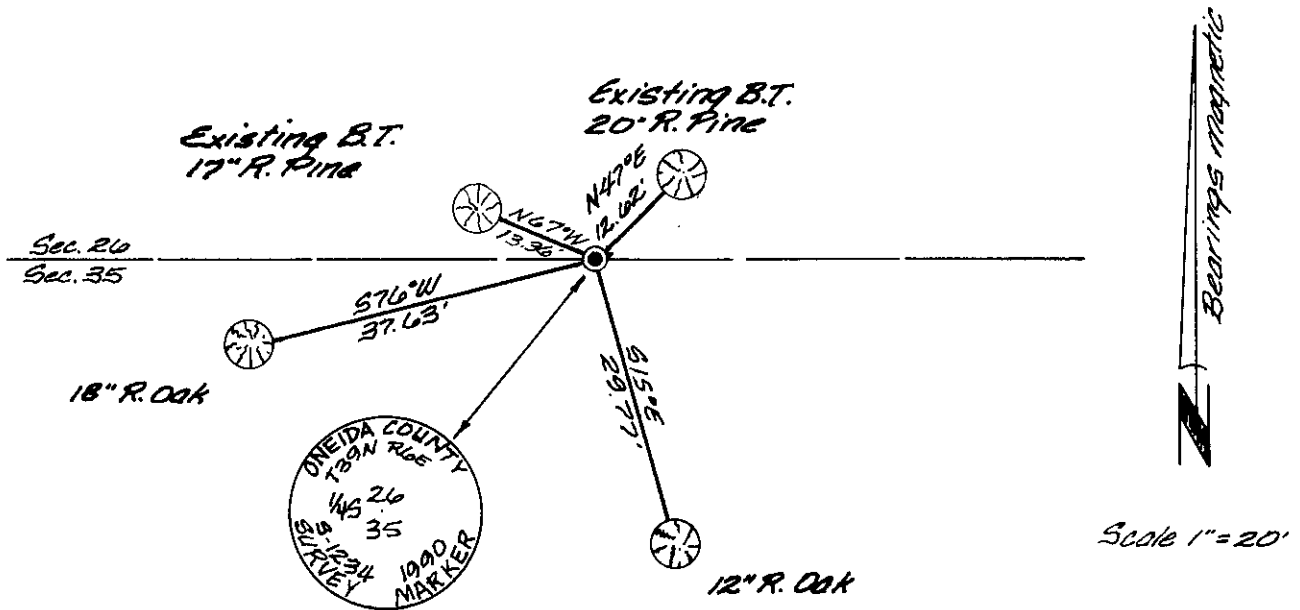
County Oneida



(b) (f) (g) (h) Description of monument found at this corner and if it was accepted, state all evidence (material, testimonial, occupational, plats, records, other monuments) used as a basis for accepting. If not accepted or if nothing was found, state evidence used as basis for establishing location. If reestablished through lost corner proportionate methods, indicate all monuments, distances and directions used to establish. Indicate type of monument found or set and sign post.

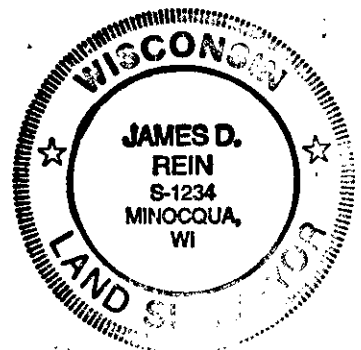
- Oct. 16th, 1863 - Alexander Anderson, Deputy Surveyor, set  $\frac{1}{4}$  post referenced by two bearing trees: a 10" Birch bearing N43°E, 6 links; and a 7" Y. Pine bearing S17°E, 7 links.
- Nov. 1949 - Walter A. Hennig, Surveyor, recovered a 1½" dia. iron pipe and a pine post referenced by the remains of the original Pine bearing tree, now a stump, bearing S17°E, 4.6 feet. Made two new reference ties to a 14" N. Pine bearing N47°E, 12.2'; and to a 12" N. Pine bearing N63°W, 13.0'.
- Feb. 16th, 1976 - James D. Rein, Registered Land Surveyor, recovered a 1 3/4" dia. iron pipe referenced by two of Hennig's bearing trees: a 16" N. Pine bearing N63°W, 13.0'; and a 18" N. Pine bearing N47°E, 12.2'.
- June 16th, 1990 - James D. Rein, Registered Land Surveyor, recovered a 1 3/4" dia. iron pipe referenced by two existing bearing trees. Replaced iron pipe with a capped 2" dia. aluminum monument and made two new reference ties as shown in plan view. Set plastic post 3/4 foot Southeast of corner monument.

(c) (d) (e) Plan view of corner with ties to at least 4 witness monuments. If in disagreement with previously established corner, show the distances between the two corners and also indicate the ties to the disputed corner.



(i) I, James D. Rein, Registered Land Surveyor No. 1234  
 (type or print name) certify that the corner location on this record was determined by me or under my direction and control and that this U.S. Public Land Survey Monument Record is correct and complete to the best of my knowledge and belief.

James D. Rein June 16th, 1990  
 Signature Date



Index No. V-19

Stamp  
 3906260020