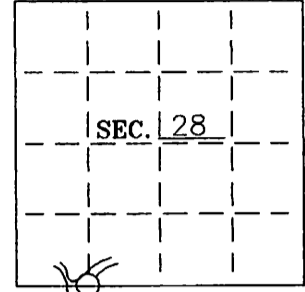


**U. S. PUBLIC LAND SURVEY MONUMENT RECORD**

Note: This form is intended and designed to fulfill all requirements of Wisconsin Administrative Code—Chapter A-E 7.08 U. S. Public Land Survey Monument Record (3)(a)(b)(c)(d)(e)(f)(g)(h)(i). An additional sheet may be added if necessary to conform with said requirements.

(a) CORNER LOCATION: State Plane Coordinates  
 MC S line corner of Sec. 28 X \_\_\_\_\_  
 Township 39 North Y \_\_\_\_\_  
 Range 06 East Datum Base \_\_\_\_\_  
 Town/XXX Minocqua County of Oneida



(b) HISTORY OF ORIGINAL CORNER ESTABLISHMENT: Original B.T.'S  
 Original Surveyor: Alexander Anderson  
 Date of Survey: Commenced October 15, 1863 Y. Pine 14" S12°W 21 lks  
 Completed October 23, 1863 Y. Pine 16" N70°E 17 lks

(b)(f)(g)(h) Description of monument found at this corner and if it was accepted—state all evidence (material—testimonial—occupation—plats—records—other monuments) used as a basis for accepting. If not accepted or if nothing was found state evidence used as basis for establishing location. If reestablished through lost corner proportionate methods indicate all monuments—distances and directions used to establish. Indicate type of monument and sign post found or set.

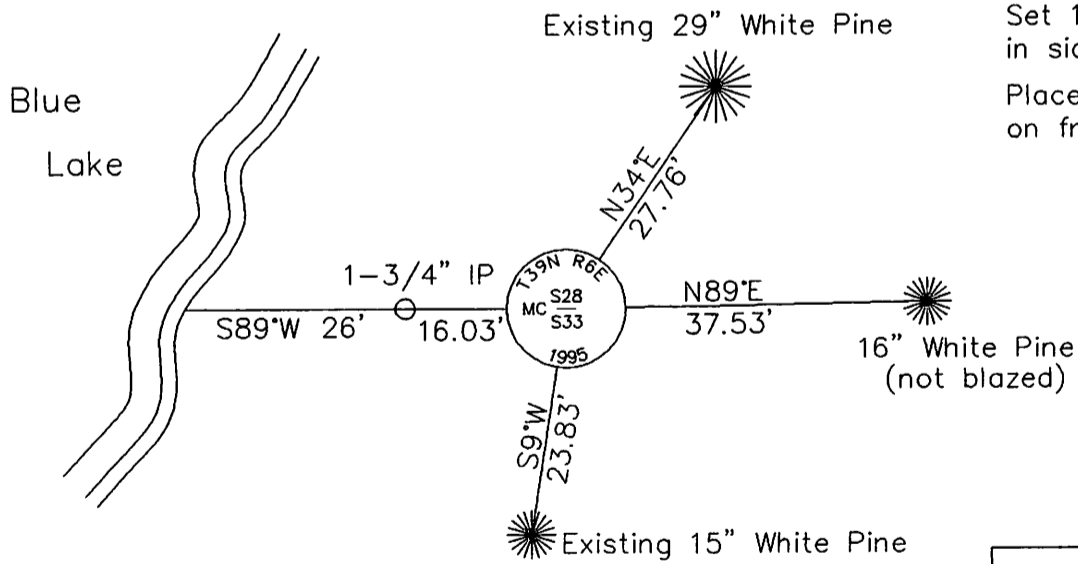
December 1928--Notes of Hall's subdivision of Sec 28--references the following BT's: White Pine 18" N34°E 26.9' and White Pine 11" S9 3/4°W 23.5'.

August 1971--John Fisher map--references iron pipe set S88° 09'W 14.5' from 1/8 corner also an 8" Hemlock N80°W 4.5' and an 18" White Pine S65°W 6.7'.

October 19, 1995--Found 4" square concrete monument labeled "MC" and two original stumps--Red Pine stump N71°E 11.7'(17lks) and Red Pine stump S14°W 14.2'(21lks). Also found a 1-3/4" iron pipe S89°W 16.03' which is probably the Fisher pipe.

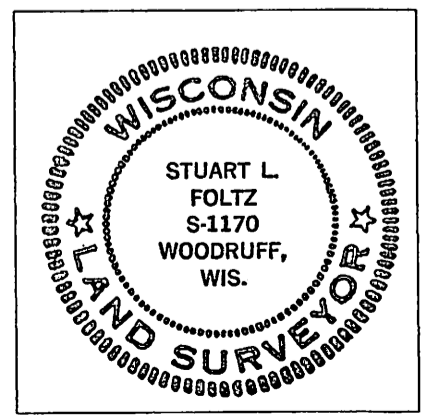
Replaced 4" concrete with a 2-1/2" dia. by 30" long aluminum-capped Oneida County monument. Set a plastic signpost 1-1/2' northeast.

(c)(d)(e) Plan view of corner with ties to at least 4 witness monuments. If in disagreement with previously established corner—show the distances between the two corners and also indicate the ties to the disputed.



Set 16d galvanized nails in side of bearing trees.  
 Placed survey marker plaque on front of bearing trees.

(i) I Stuart L. Foltz  
 hereby certify that the corner location on this record was determined by me or under my direction and control and that this U.S. Public Land Survey Monument Record is correct and complete to the best of my knowledge and belief.



INDEX NO. V-10-11

Stuart L. Foltz 12-20-95  
 Signature Date

29 MRS/16/21  
 3906280034

# U.S. PUBLIC LAND SURVEY MONUMENT RECORD

Note: This form is intended and designed to fulfill all requirements of the Wisconsin Administrative Code, Chapter A-E 7.08 U.S. Public Land Monument Record (3)(a)(b)(c)(d)(e)(f)(g)(h)(i). An additional sheet may be added if necessary to conform with said requirements.

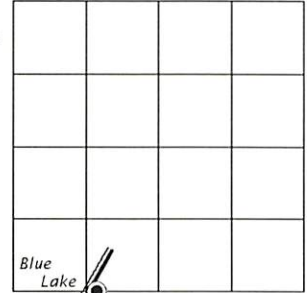
**(a) CORNER LOCATION:**

E. Meander Corner south line of Section 28  
 Township 39 North  
 Range 6 East  
 Town Minocqua  
 County of Oneida

North:  
 East:  
 Datum:  
 GNSS Method:  
 GNSS Control:

(RECORDING AREA)

**SECTION 28**



**(b) HISTORY OF ORIGINAL CORNER ESTABLISHMENT**

Original Surveyor:  
 Date of Survey: Commenced \_\_\_\_\_  
 Completed \_\_\_\_\_  
 Original B.T.'S \_\_\_\_\_

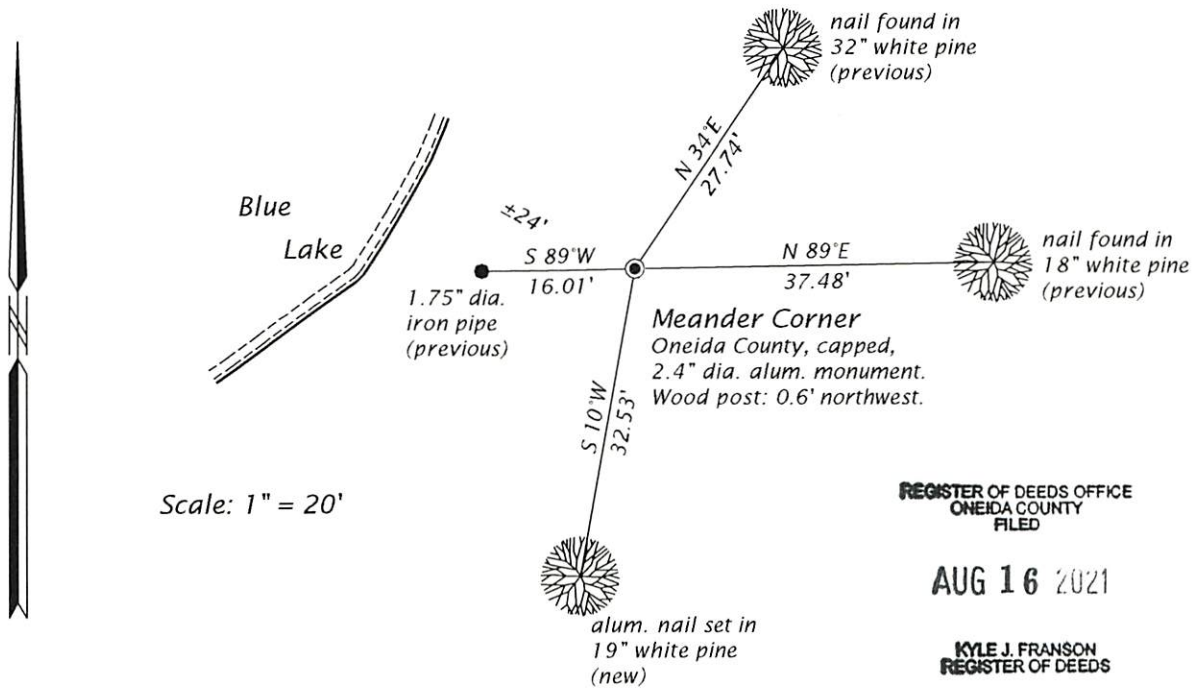
SEE PREVIOUS U.S.P.L.S. MONUMENT RECORD DATED DECEMBER 20, 1995.

(f)(g)(h) DESCRIPTION OF MONUMENT FOUND AT THIS CORNER AND IF IT WAS ACCEPTED, STATE ALL EVIDENCE (MATERIAL, TESTIMONIAL, OCCUPATIONAL, PLATS, RECORD, OTHER MONUMENTS) USED AS A BASIS FOR ESTABLISHING LOCATION. IF NOT ACCEPTED OR IF NOTHING WAS FOUND, STATE EVIDENCE USED AS BASIS FOR ESTABLISHING LOCATION. IF REESTABLISHED THROUGH LOST CORNER PROPORTIONATE METHODS, INDICATE ALL MONUMENTS, DISTANCES AND DIRECTIONS USED TO ESTABLISH. INDICATE TYPE OF MONUMENT AND SIGN POST FOUND OR SET.

This is a perpetuation of a previous U.S.P.L.S. Monument Record by Stuart L. Foltz, RLS, dated December 20, 1995, and filed in the office of the Oneida County Register of Deeds. A complete history of the corner can be found on the previous monument record. I accept the previous location as a true and faithful perpetuation or reestablishment of the original corner location and further perpetuate it as follows.

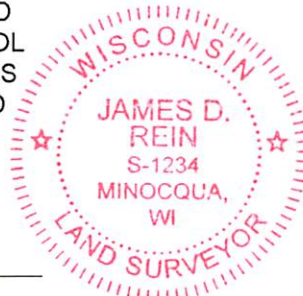
July 23, 2021, we found, and I accepted the Oneida County, aluminum-capped monument set by Foltz in 1995. The southwesterly white pine bearing tree is now a stump. See below for updated witnesses.

(c)(d)(e) PLAN VIEW OF CORNER WITH TIES TO AT LEAST 4 WITNESS MONUMENTS. IF IN DISAGREEMENT WITH PREVIOUSLY ESTABLISHED CORNER, SHOW THE DISTANCE BETWEEN THE TWO CORNERS AND ALSO INDICATE THE TIES TO THE DISPUTED CORNER.



(i) I, JAMES D. REIN, PROFESSIONAL LAND SURVEYOR NO. S-1234 HEREBY CERTIFY THAT THE CORNER LOCATION ON THIS RECORD WAS DETERMINED BY ME OR UNDER MY DIRECTION AND CONTROL AND THAT THIS U.S. PUBLIC LAND SURVEY MONUMENT RECORD IS CORRECT AND COMPLETE TO THE BEST OF MY KNOWLEDGE AND BELIEF.

James D Rein 8/10/21  
 SIGNATURE DATE



INDEX NO. V 10-11  
 3906280029