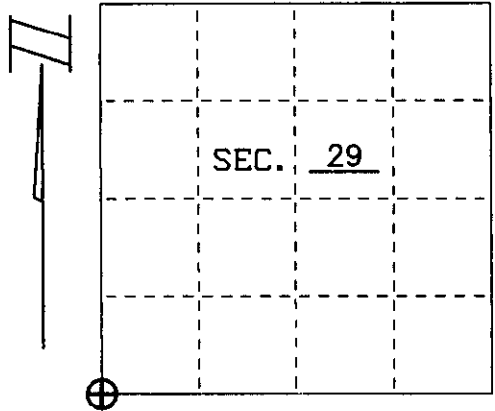


U. S. P U B L I C L A N D S U R V E Y M O N U M E N T R E C O R D

Note: This form is intended and designed to fulfill all requirements of Wisconsin Administrative Code, Chapter A-E 7.08 U.S. Public Land Survey Monument Record (3)(a)(b)(c)(d)(e)(f)(g)(h)(i). An additional sheet may be added if necessary to conform with said requirements.

(a) CORNER LOCATION Township 39 North
Range 6 East

Town of Minocqua
County of Oneida, State of Wisconsin



(b)(f)(g)(h) Description of monument found at this corner and if it was accepted, state all evidence (material, testimonial, occupational, plats, records, other monuments) used as a basis for accepting. If not accepted or if nothing was found, state evidence used as basis for establishing location, if reestablished through lost corner proportionate methods, indicate all monuments, distances and directions used to establish. Indicate type of monument and sign post found or set.

Oct. 15-23, 1863 Alexander Anderson, Deputy Surveyor

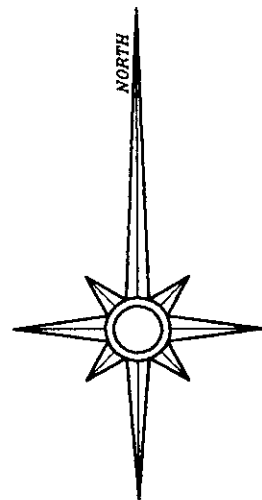
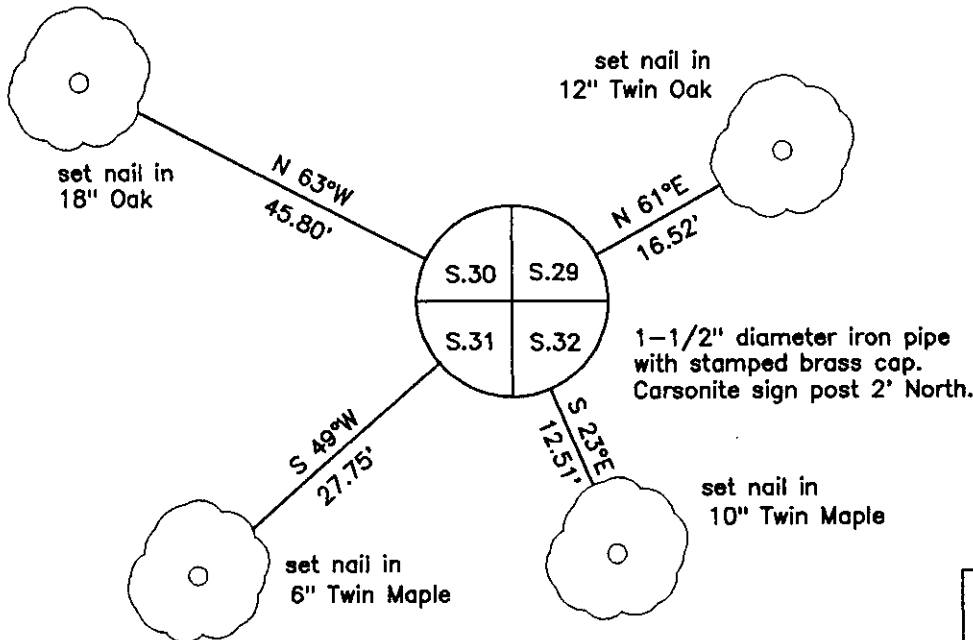
Original Bearing Trees:
Birch 8" N 57°W 27lks
Birch 10" N 35°E 14lks

November, 1996 Harry C. Hall finds evidence of the original Section Corner bearing trees. He set an iron pipe and made the following bearing trees:
W. Pine 15" N 22 1/2°E 138.5'
Maple 11" N 40°W 133.8'

July, 1974 John H. Fisher, Northwoods Surveyors finds Halls corner and Pine B.T. stump in the Plat of Sandpiper.

Nov. 20, 1996 I found Halls iron pipe and bark scribed the bearing trees as shown below. I found carsonite post North, 2 feet

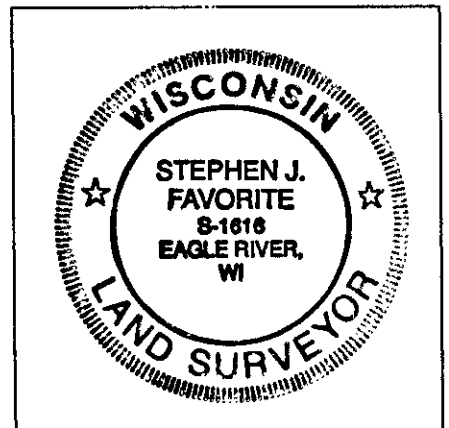
(c)(d)(e) Plan view of corner with ties to at least 4 witness monuments. If in disagreement with previously established corner, show the distances between the two corners and also indicate the ties to the disputed.



NOT TO SCALE

(i) I, Stephen J. Favorite, hereby certify that the corner location on this record was determined by me or under my direction and control and that this U.S. Public Land Survey Monument Record is correct and complete to the best of my knowledge and belief.

Stephen J. Favorite
Stephen J. Favorite
R.L.S. #S-1616
Date 12/9/96



INDEX NO. V 5

390630 0000