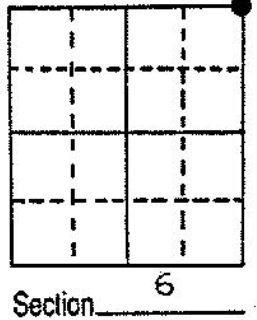


U.S. PUBLIC LAND SURVEY MONUMENT RECORD

Note: This form is intended and designed to fulfill all requirements of Wisconsin Administrative Code, Chapter A-E 5.02, U.S. Public Land Survey Monument Record (3) (a) (b) (c) (d) (e) (f) (g) (h) (i). An additional sheet may be added if necessary to conform with said requirements.

(a) Corner location: Township 38 North
 Range 6 East/West

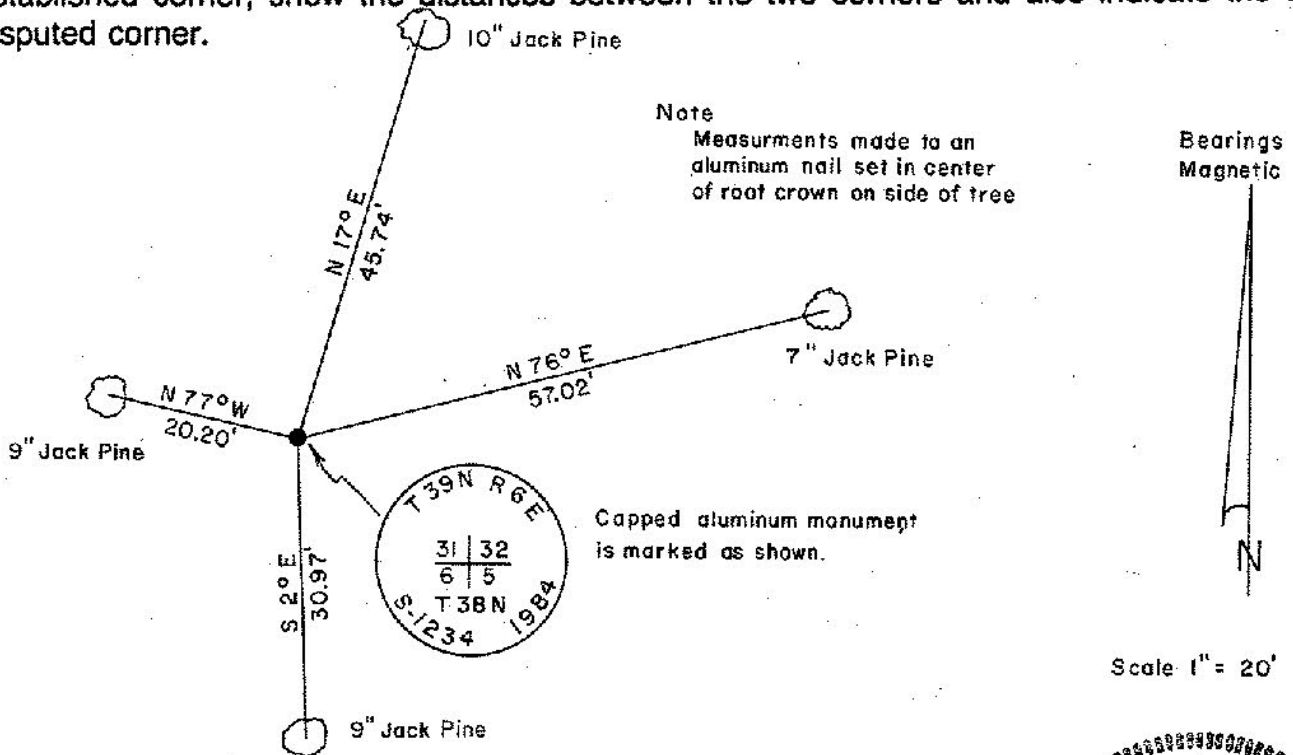
Town/City/Village HAZELHURST
 County ONEIDA



(b) (f) (g) (h) Description of monument found at this corner and if it was accepted, state all evidence (material, testimonial, occupational, plats, records, other monuments) used as a basis for accepting. If not accepted or if nothing was found, state evidence used as basis for establishing location. If reestablished through lost corner proportionate methods, indicate all monuments, distances and directions used to establish.

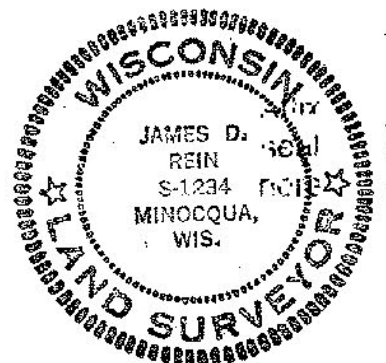
Sept. 20 1860- Alfred Millard, Deputy Surveyor - Set post to corner.
 Original bearing trees: Y. Pine 10" S34°E, 63 lks;
 Y. Pine 20" S28°E, 32 lks; Y. Pine 14" S45°W, 108 lks; Y. Pine 8" N33°W, 56 lks.
 June 22 1933- Ray H. Hall, Deputy County Surveyor- Found D. H. Vaughn's ^{post} in old R.R. grade. This checks with one stp which has boxing in evidence and with hole where other was removed. New bearing trees: Jack Pine 6" S58°W, .561 ch; Jack Pine S26½°E, .798 ch.
 Dec. 11 1984- James D. Rein, RLS- Replaced a found 1½" dia x 24" long iron pipe and old scribed post with a capped 2" dia. x 30" long magnetic aluminum monument extending 2" above ground in old railroad grade. Hall's 14" Jack Pine stump bears S58°W, 36.9 feet. Set new cedar post one foot Northwest of corner. Made new BTs as shown below in plan view.

(c) (d) (e) Plan view of corner with ties to at least 4 witness monuments. If in disagreement with previously established corner, show the distances between the two corners and also indicate the ties to the disputed corner.



(i) I, JAMES D. REIN, Reg. Land Surveyor No. S-1234
 (type or print name) certify that the corner location on this record was determined by me or under my direction and control and that this U.S. Public Land Survey Monument Record is correct and complete to the best of my knowledge and belief.

James D Rein Jan 31st, 1985
 Signature Date



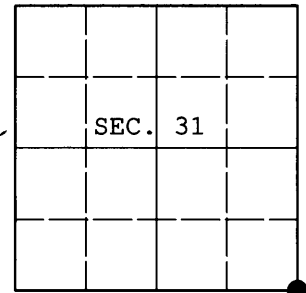
Index No. A-5

3906310000

U.S. PUBLIC LAND SURVEY MONUMENT RECORD

Note: This form is intended and designed to fulfill all requirements of Wisconsin Administrative Code, Chapter A-E 7.08 U.S. Public Land Survey Monument Record (3) (a) (b) (c) (d) (e) (f) (g) (h) (i). An additional sheet may be added if necessary to conform with said requirements.

(a) CORNER LOCATION: Plane Coordinates
 Cor. of Secs. 5, 6, 31 & 32 N:
 Township 38 & 39 North E:
 Range 6 East of the 4th P.M. Datum:
 Town of Minocqua County of Oneida



(b) HISTORY OF ORIGINAL CORNER ESTABLISHMENT

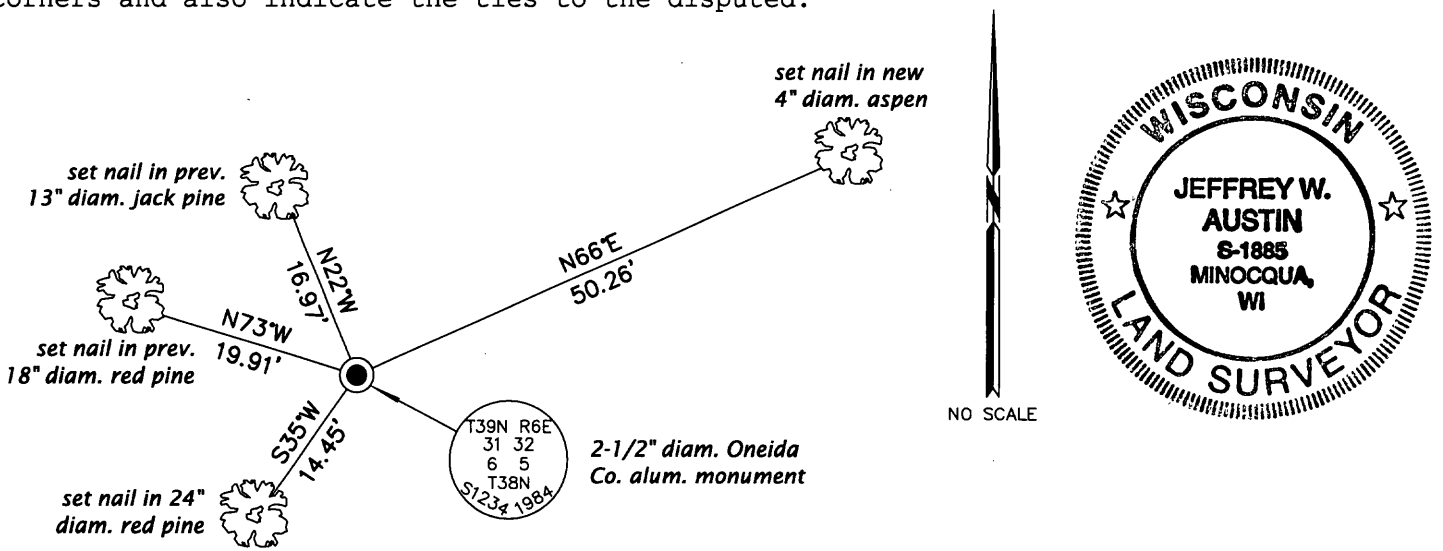
Original Surveyor: Alfred Millard	Original Accessories:
Date of Survey: Commenced: Sept., 1860	y. pine 10" N34°E, 63 lks.
Completed: Sept., 1860	y. pine 20" S28°E, 32 lks.
	y. pine 14" S45°W, 108 lks.
	y. pine 8" N33°W, 56 lks.

(b) (f) (g) (h) Description of monument found at this corner and if it was accepted, state all evidence (material, testimonial, occupational, plats, records, other monuments) used as a basis for accepting. If not accepted or if nothing was found, state evidence used as basis for establishing location. If re-established through lost corner proportionate methods, indicate all monuments, distances and directions used to establish. Indicate type of monument and sign post found or set.

NOTE: This is a perpetuation of a previous USPLS Monument Record by James D. Rein, RLS dated January 31, 1985 and filed in the office of the Oneida County Register of Deeds. A complete history of the corner can be found on the previous monument record. I accept the previous location as a true and faithful perpetuation or reestablishment of the original corner location and further perpetuate it as follows.

July 22, 2012: I found and accepted Rein's monument, a 2-1/2" diam. aluminum pipe with 3-1/4" diam. Oneida Co. aluminum cap projecting 2" above the ground surface. I found or established accessories as shown below and found a white plastic sign post bearing Northeast, 1 ft. dist.

(c) (d) (e) Plan view of corner with ties to at least 4 witness monuments. If in disagreement with previously established corner, show the distances between the two corners and also indicate the ties to the disputed.

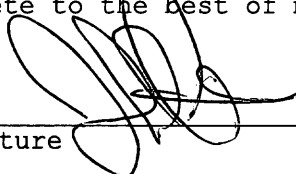


REGISTER OF DEEDS OFFICE
 ONEIDA COUNTY
 FILED

MAR 11 2013

(i) I, Jeffrey W. Austin, Registered Land Surveyor No. S-1885, hereby certify that the corner location on this record was determined by me or under my direction and control and that this U.S. Public Land Survey Monument Record is correct and complete to the best of my knowledge and belief.

AT _____ O'CLOCK _____ M
 KYLE J. FRANSON
 REGISTER OF DEEDS

Signature 

FEB. 27, 2013

Date

3906310000 (INDEX NO. Z-5)