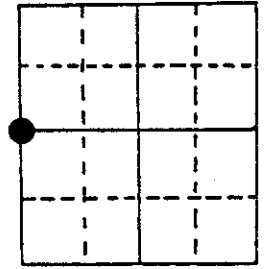


U.S. PUBLIC LAND SURVEY MONUMENT RECORD

Note: This form is intended and designed to fulfill all requirements of Wisconsin Administrative Code, Chapter A-E 5.02, U.S. Public Land Survey Monument Record (3) (a) (b) (c) (d) (e) (f) (g) (h) (i). An additional sheet may be added if necessary to conform with said requirements.

(a) Corner location: Township 39 North
 Range 6 East/West
 Town/City/Village MINOCQUA
 County ONEIDA

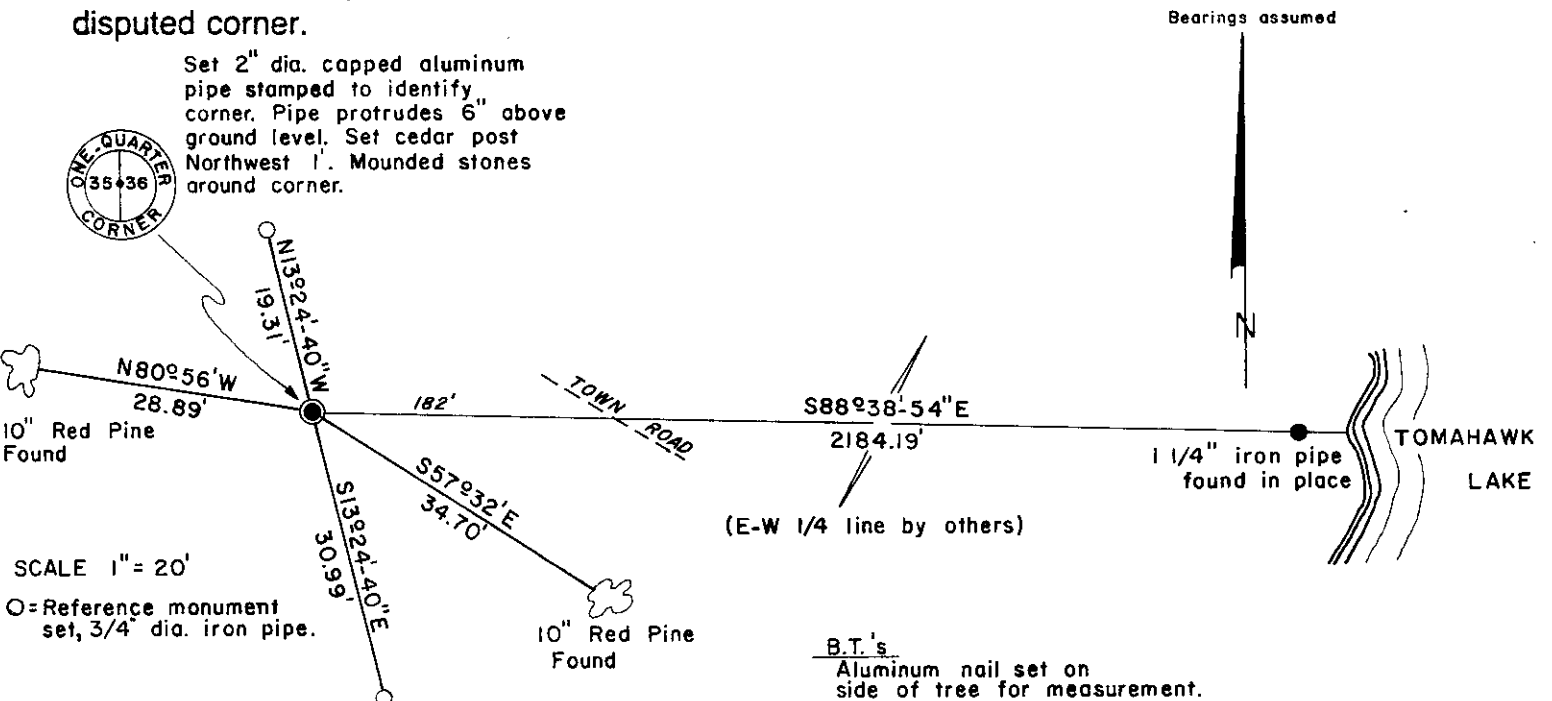


Section 36

(b) (f) (g) (h) Description of monument found at this corner and if it was accepted, state all evidence (material, testimonial, occupational, plats, records, other monuments) used as a basis for accepting. If not accepted or if nothing was found, state evidence used as basis for establishing location. If reestablished through lost corner proportionate methods, indicate all monuments, distances and directions used to establish.

- October 1863 - Alexander Anderson, Deputy Surveyor, set original one-quarter section post. Original bearing trees: Birch 12" N79-1/2°W, 86 links; Birch 12" S81°E, 63 links.
- October 1938 - Harry C. Hall, map of survey illustrates section line and survey 825 feet south of one-quarter corner.
- January 1951 - E. F. Kowalke map of survey notes quarter corner as a post.
- January 1964 - L. W. Scott survey map shows one-quarter corner as post found.
- October 31, 1984 - Jerome N. Kraemer, found 2" diameter iron pipe and old 5" square oak post scribed 1/4. Found 10" R.Pine, S57°E, 34.70 feet; found 10" R.Pine, N80°W, 28.89 feet; found Hemlock, down and rotted, face blaze good, scribed 1/4 S BT, N75°E, 38-1/2 feet. Accepted corner position as quarter corner and replaced found 2" iron pipe and post with an Oneida County 2" diameter aluminum pipe.

(c) (d) (e) Plan view of corner with ties to at least 4 witness monuments. If in disagreement with previously established corner, show the distances between the two corners and also indicate the ties to the disputed corner.



(i) I, JEROME N. KRAEMER
 (type or print name) certify that the corner location on this record was determined by me or under my direction and control and that this U.S. Public Land Survey Monument Record is correct and complete to the best of my knowledge and belief.

Jerome N. Kraemer December 10th, 1984
 Signature Date



3906352000

Index No. X-21