

U.S. PUBLIC LAND SURVEY MONUMENT RECORD

Note: This form is intended and designed to fulfill all requirements of Wisconsin Administrative Code, Chapter A-E 5.02, U.S. Public Land Survey Monument Record (3) (a) (b) (c) (d) (e) (f) (g) (h) (i). An additional sheet may be added if necessary to conform with said requirements.

(a) Corner location: Township 39 North

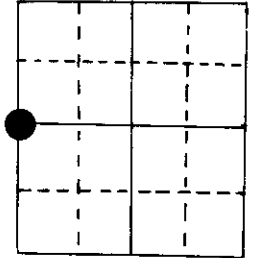
Range 7 East ~~3~~

Town ~~Oneida~~ of Woodruff

County Oneida

1 3/4 " iron pipe

W 1/4 Section 20



(b) (f) (g) (h) Description of monument found at this corner and if it was accepted, state all evidence (material, testimonial, occupational, plats, records, other monuments) used as a basis for accepting. If not accepted or if nothing was found, state evidence used as basis for establishing location. If reestablished through lost corner proportionate methods, indicate all monuments, distances and directions used to establish.

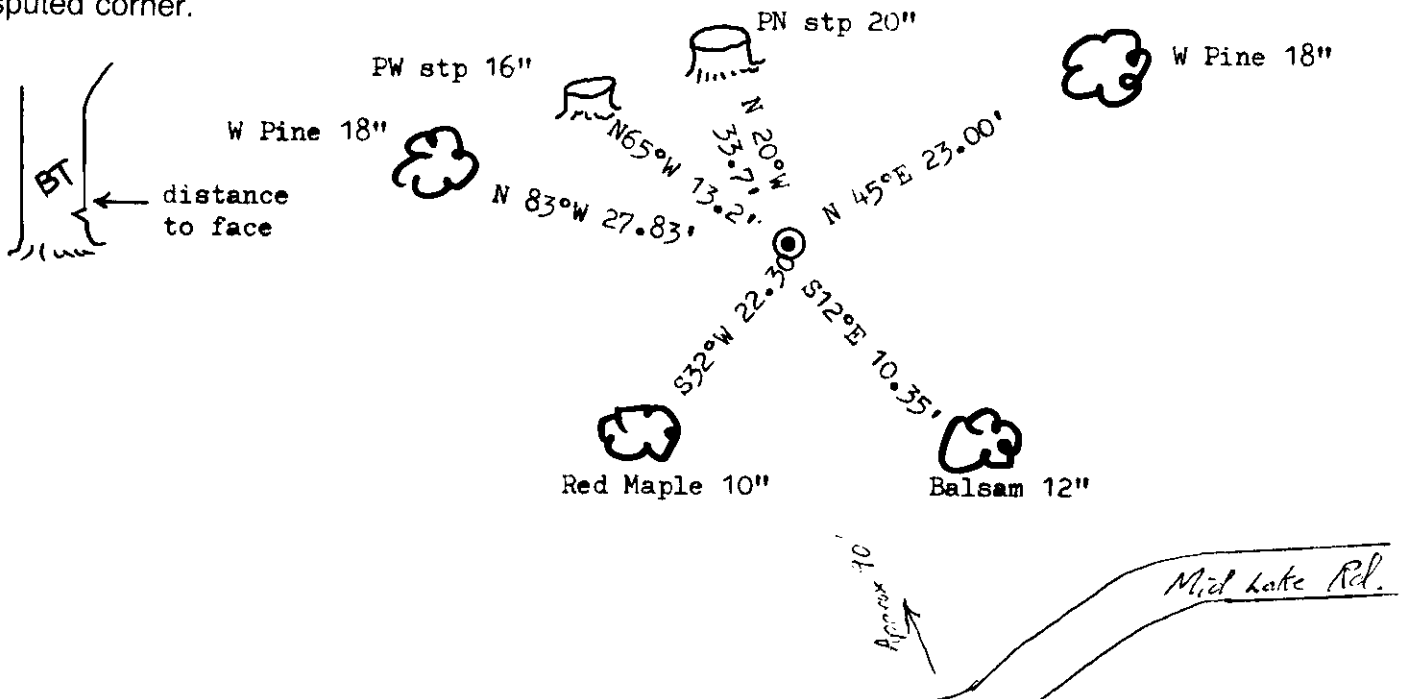
Original Alex Anderson Sept 1863. OBT's BW 10" S 15°E 10 lks, PW 16" N 65°W 20 lks

Hennig in 1947 found 1/4 cor. from map but field notes not indexed so they can not be looked up. No BT's shown. Monument type not indicated.

Vissers & Freund in 2/28/78 found i.p. & wood post with BT's PN stp 20" N 20°W 33.7'
PW stp 16" N 65°W 13.2'.

I found on Feb. 1984 the 1 3/3 " i.p. but the wood post was gone, just hole in ground.
Found both stps & BT's PW 18" N 45°E 23.00', PW 18" N 83°W 27.83'.
Made new BT's FB 12" S 12°E 10.35', MR 10" S 32°W 22.30'

(c) (d) (e) Plan view of corner with ties to at least 4 witness monuments. If in disagreement with previously established corner, show the distances between the two corners and also indicate the ties to the disputed corner.



(i) I, Marvin E. Seymour
(type or print name) certify that the corner location on this record was determined by me or under my direction and control and that this U.S. Public Land Survey Monument Record is correct and complete to the best of my knowledge and belief.

Marvin E. Seymour April 19, 1984
Signature Date



3907192000

P-5

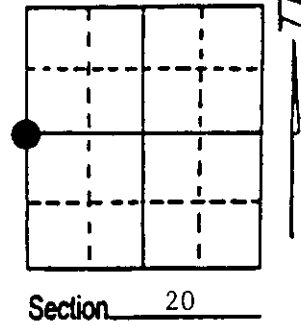
U.S. PUBLIC LAND SURVEY MONUMENT RECORD

Note: This form is intended and designed to fulfill all requirements of Wisconsin Administrative Code, Chapter A-E 7.08 U.S. Public Land Survey Monument Record (3) (a) (b) (c) (d) (e) (f) (g) (h) (i). An additional sheet may be added if necessary to conform with said requirements.

(a) Corner location: Township 39 North
 Range 7 East/West

Town/City/Village Woodruff

County Oneida



(b) (f) (g) (h) Description of monument found at this corner and if it was accepted, state all evidence (material, testimonial, occupational, plats, records, other monuments) used as a basis for accepting. If not accepted or if nothing was found, state evidence used as basis for establishing location. If reestablished through lost corner proportionate methods, indicate all monuments, distances and directions used to establish. Indicate type of monument found or set and sign post.

Sept. 1863 - Alexander Anderson established this corner at 40.0 chains and set a wood post with two BTs:

10" Birch, S15°E, 10 Links 16" W. Pine, N65°W, 20 Links

1930s - Hall made new BT: 20" Pine Stump, N20°W, 33.7'

1947, 1978 & 1984 - DNR personnel perpetuated corner.

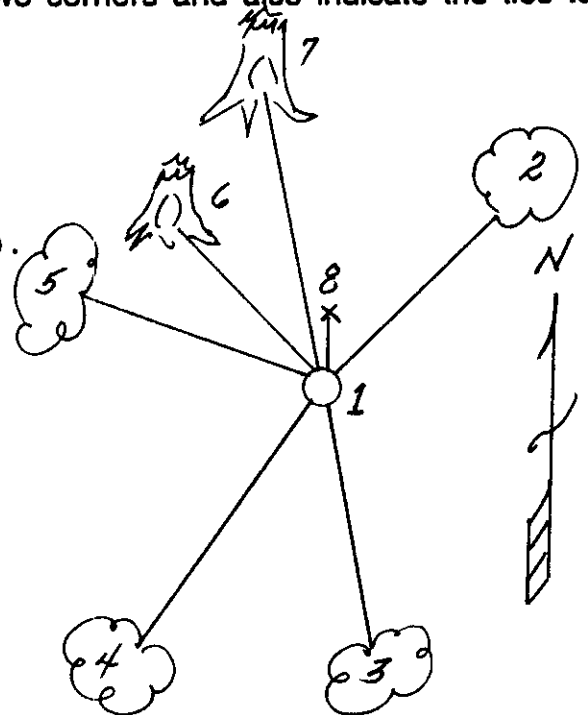
4/1992 - Milo E. Stefan found iron pipe marking corner with new BTs by Marvin Seymour in 1984, Halls BT stump and original Pine Stump.

I placed an aluminum monument, verified the BTs and set plastic sign post.

(c) (d) (e) Plan view of corner with ties to at least 4 witness monuments. If in disagreement with previously established corner, show the distances between the two corners and also indicate the ties to the disputed corner.

- 1) 2" x 30" aluminum monument.
- 2) 18" White Pine, N45°E, 23.80'.
- 3) 12" Balsam Fir, S7°E, 10.99'.
- 4) 10" Red Maple, S38°W, 22.52'.
- 5) 18" White Pine, N80°W, 28.28'.
- 6) 16" White Pine Stump, N65°W, 13.2' (original).
- 7) 20" White Pine Stump, N20°W, 33.7' (Halls).
- 8) Plastic sign post, North, 1.0'.

Distances to nail in side of BTs.
 Stump blaze scribed "BT".



(i) I, Milo E. Stefan
 (type or print name) certify that the corner location on this record was determined by me or under my direction and control and that this U.S. Public Land Survey Monument Record is correct and complete to the best of my knowledge and belief.

Milo E. Stefan
 Signature

August 4, 1992

Date



Stamp

3907192000

Index No. P-5

U.S. PUBLIC LAND SURVEY MONUMENT RECORD

DEC 07 2017

Note: This form is intended and designed to fulfill all requirements of the Wisconsin Administrative Code, Chapter A-E 7.08 U.S. Public Land Monument Record (3)(a)(b)(c)(d)(e)(f)(g)(h)(i). An additional sheet may be added if necessary to conform with said requirements.

AT _____ O'CLOCK _____ M
KYLE J. FRANSON
REGISTER OF DEEDS

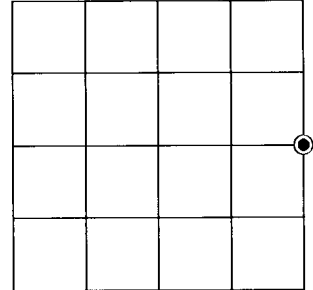
(a) CORNER LOCATION:

East Quarter Corner of Section 19
Township 39 North
Range 7 East
Town of Woodruff
County of Oneida

North:
East:
Datum:
GNSS Method:
GNSS Control:

(RECORDING AREA)

SECTION 19



(b) HISTORY OF ORIGINAL CORNER ESTABLISHMENT

Original Surveyor:
Date of Survey: Commenced _____
Completed _____
Original B.T.'S _____

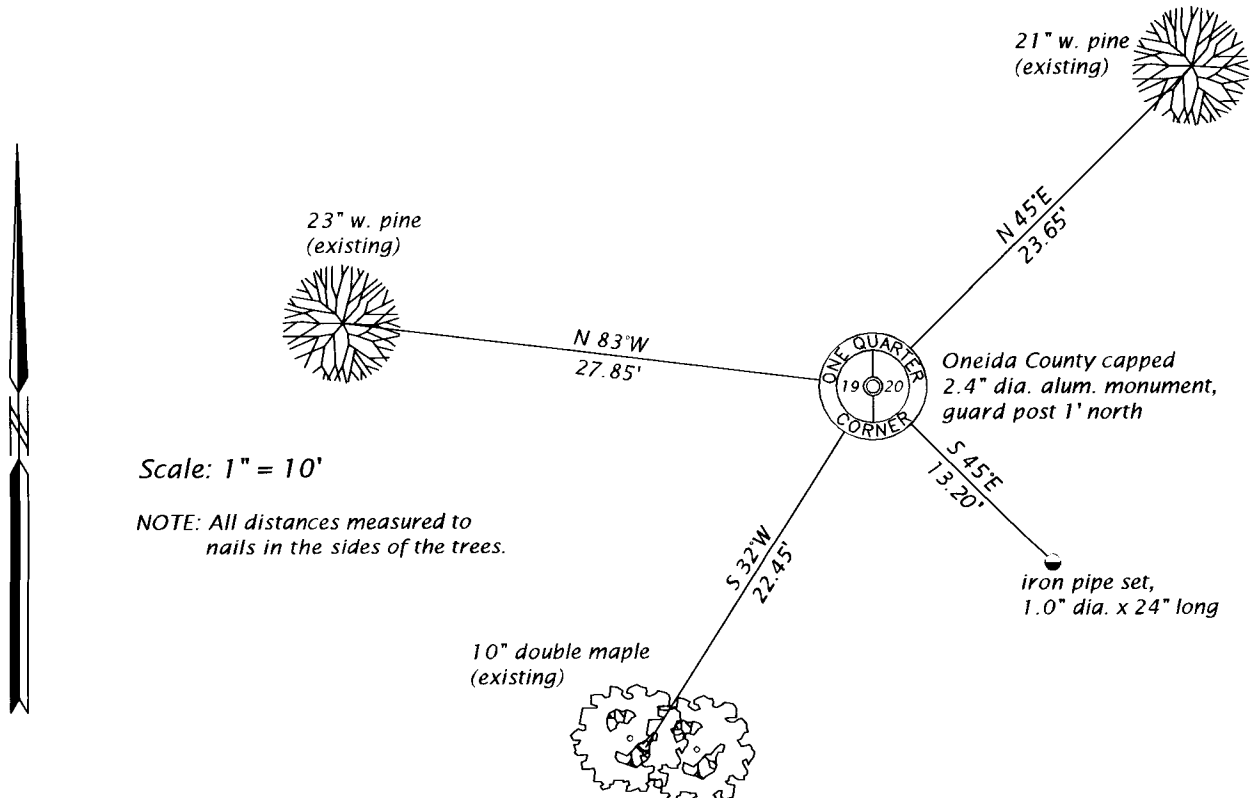
**SEE PREVIOUS U.S.P.L.S. MONUMENT
RECORD DATED AUGUST 4, 1992.**

(f)(g)(h) DESCRIPTION OF MONUMENT FOUND AT THIS CORNER AND IF IT WAS ACCEPTED, STATE ALL EVIDENCE (MATERIAL, TESTIMONIAL, OCCUPATIONAL, PLATS, RECORD, OTHER MONUMENTS) USED AS A BASIS FOR ESTABLISHING LOCATION. IF NOT ACCEPTED OR IF NOTHING WAS FOUND, STATE EVIDENCE USED AS BASIS FOR ESTABLISHING LOCATION. IF REESTABLISHED THROUGH LOST CORNER PROPORTIONATE METHODS, INDICATE ALL MONUMENTS, DISTANCES AND DIRECTIONS USED TO ESTABLISH. INDICATE TYPE OF MONUMENT AND SIGN POST FOUND OR SET.

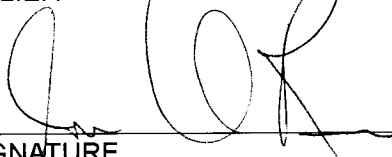
This is a perpetuation of a previous U.S.P.L.S. Monument Record by Milo E. Stefan, RLS, dated August 4, 1992, and filed in the office of the Oneida County Register of Deeds. A complete history of the corner can be found on the previous monument record. I accept the previous location as a true and faithful perpetuation or reestablishment of the original corner location and further perpetuate it as follows.

September 26, 2017, James D. Rein, PLS No. S-1234, found and accepted the Oneida County capped aluminum monument set by Stefan in 1992. His southeasterly balsam is now gone - see below for updated witnesses.

(c)(d)(e) PLAN VIEW OF CORNER WITH TIES TO AT LEAST 4 WITNESS MONUMENTS. IF IN DISAGREEMENT WITH PREVIOUSLY ESTABLISHED CORNER, SHOW THE DISTANCE BETWEEN THE TWO CORNERS AND ALSO INDICATE THE TIES TO THE DISPUTED CORNER.



(i) I, JAMES D. REIN, PROFESSIONAL LAND SURVEYOR NO. S-1234 HEREBY CERTIFY THAT THE CORNER LOCATION ON THIS RECORD WAS DETERMINED BY ME OR UNDER MY DIRECTION AND CONTROL AND THAT THIS U.S. PUBLIC LAND SURVEY MONUMENT RECORD IS CORRECT AND COMPLETE TO THE BEST OF MY KNOWLEDGE AND BELIEF.


SIGNATURE

12-01-17
DATE



INDEX NO. P-5
3907192000