

U.S. PUBLIC LAND SURVEY MONUMENT RECORD

Note: This form is intended and designed to fulfill all requirements of Wisconsin Administrative Code, Chapter A-E 5.02, U.S. Public Land Survey Monument Record (3) (a) (b) (c) (d) (e) (f) (g) (h) (i). An additional sheet may be added if necessary to conform with said requirements.

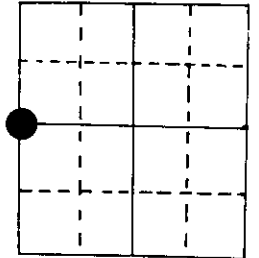
(a) Corner location: Township 39 North

Range 7 East ~~8~~

Town ~~Woodruff~~ of Woodruff

County Oneida

2" iron pipe



W 1/4 Section 28

(b) (f) (g) (h) Description of monument found at this corner and if it was accepted, state all evidence (material, testimonial, occupational, plats, records, other monuments) used as a basis for accepting. If not accepted or if nothing was found, state evidence used as basis for establishing location. If reestablished through lost corner proportionate methods, indicate all monuments, distances and directions used to establish.

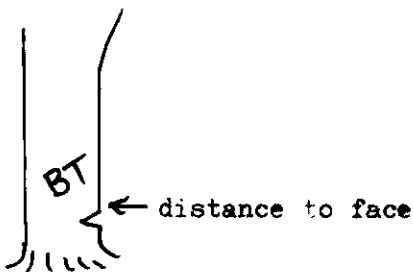
Original Alex Anderson Sept 1863. OBT's Maple 9" S 77°W 16 lks, Maple 9" S 68½°E 16 lks
Dorr was at the cor. in 1897 & 1899.


Vaughan in 12/24/15 set W 1/4 at 40.44½, Pw stp 30" S 65°E 20 lks, Pw stp 36" S 25½°W 58 lks

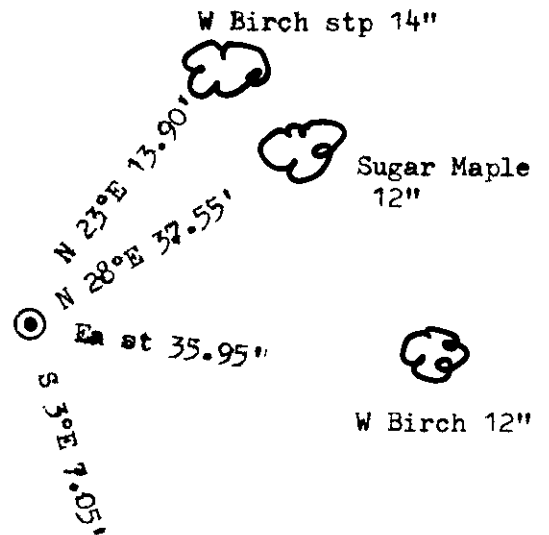
Visser's in 10/15/78 found 2" i.p., BT's BW 1 1/4" N 23°E 13.90', Asp 10" S 3°E 7.05'
OR 14" N 34°W 21.95'

I found on March 1984 the 2" i.p. & BT's but the OR 14" is S 84°W 29.95', Bw 14" is stp.
Made new BT's MH 12" N 28°E 37.55', BW 12" east 35.95'

(c) (d) (e) Plan view of corner with ties to at least 4 witness monuments. If in disagreement with previously established corner, show the distances between the two corners and also indicate the ties to the disputed corner.

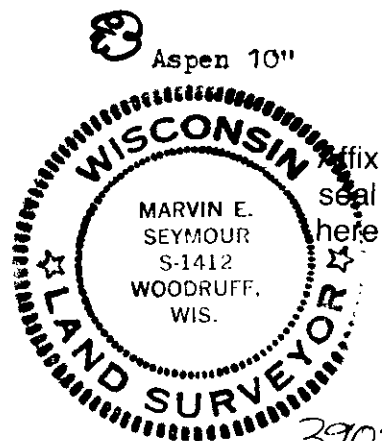


 S 84°W 29.95'
Red Oak 14"



(i) I, Marvin E. Seymour
(type or print name) certify that the corner location on this record was determined by me or under my direction and control and that this U.S. Public Land Survey Monument Record is correct and complete to the best of my knowledge and belief.

Marvin E. Seymour April 24, 1984
Signature Date



3907292000

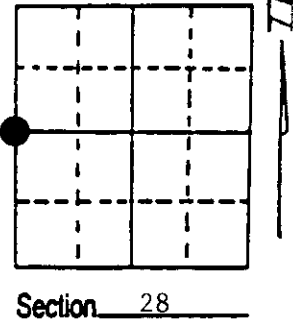
7-9

U.S. PUBLIC LAND SURVEY MONUMENT RECORD

Note: This form is intended and designed to fulfill all requirements of Wisconsin Administrative Code, Chapter A-E 7.08 U.S. Public Land Survey Monument Record (3) (a) (b) (c) (d) (e) (f) (g) (h) (i). An additional sheet may be added if necessary to conform with said requirements.

(a) Corner location: Township 39 North
 Range 7 East/West

Town/City/Village Woodruff
 County Oneida



(b) (f) (g) (h) Description of monument found at this corner and if it was accepted, state all evidence (material, testimonial, occupational, plats, records, other monuments) used as a basis for accepting. If not accepted or if nothing was found, state evidence used as basis for establishing location. If reestablished through lost corner proportionate methods, indicate all monuments, distances and directions used to establish. Indicate type of monument found or set and sign post.

Sept. 1863 - Alexander Anderson established this corner at 40.00 chains, set a wood post and made two BTs:

9" Maple, S77°W, 16 Links 9" Maple, S68½°E, 16 Links

1897 & 1899 - Dorr was at corner.

12/24/1915 - Vaughan restored corner by Lost Methods and at 40.44½ chains set post and two new ties:

30" W. Pine Stump, S65°E, 20 Links 36" W. Pine Stump, S25½°W, 58 Links

10/15/1978 - Vissers found iron pipe marking corner with both of Vaughan BTs present. He made three new BTs:

14" White Birch, N23°E, 13.90' 10" Aspen, S3°E, 7.05'
 14" Red Oak, N34°W, 21.95'

3/1984 - Marvin Seymour found Visser's work and made two new BTs:

12" Hard Maple, N28°E, 37.55' 12" White Birch, East, 35.95'

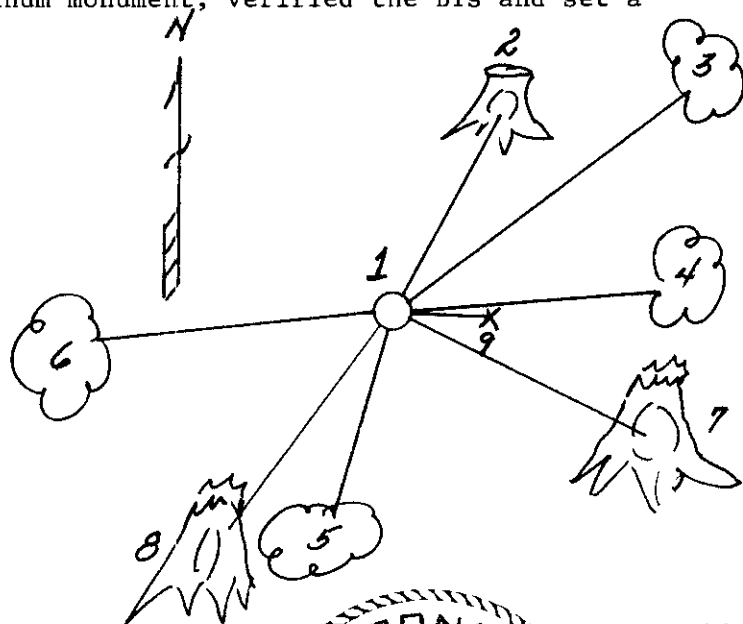
4/1992 - Milo E. Stefan found 2" iron pipe marking corner as restored by Vaughan in 1915.

(c) (d) (e) Plan view of corner with ties to at least 4 witness monuments. If in disagreement with previously established corner, show the distances between the two corners and also indicate the ties to the disputed corner.

His BT stumps are in good condition. Vissers and Seymours BTs in good condition except northeast Birch by Vissers is now a stump. We replaced iron pipe with an aluminum monument, verified the BTs and set a plastic sign post.

- 1) 2" x 30" aluminum monument.
- 2) 14" White Birch Stump, N23°E, 13.9'.
- 3) 12" Red Maple, N38°E, 38.32'.
- 4) 12" White Birch, N81°E, 35.75'.
- 5) 10" Aspen, S11°W, 7.05'.
- 6) 14" Red Oak, S84°W, 30.63'.
- 7) 30" White Pine Stump, S65°E, 13.2'.
- 8) 36" White Pine Stump, S25½°W, 38.3'.
- 9) Plastic sign post, East, 1.0'.

Distances to nail in side of BTs.
 Stump blaze scribed "BT".



(i) I, Milo E. Stefan
 (type or print name) certify that the corner location on this record was determined by me or under my direction and control and that this U.S. Public Land Survey Monument Record is correct and complete to the best of my knowledge and belief.

Milo E. Stefan August 4, 1992
 Signature Date



Index No. T-9

Stamp 3907292000

U.S. PUBLIC LAND SURVEY MONUMENT RECORD

Note: This form is intended and designed to fulfill all requirements of the Wisconsin Administrative Code, Chapter A-E 7.08 U.S. Public Land Monument Record (3)(a)(b)(c)(d)(e)(f)(g)(h)(i). An additional sheet may be added if necessary to conform with said requirements.

REGISTER OF DEEDS OFFICE
ONEIDA COUNTY
FILED

APR 24 2020

KYLE J. FRANSON
REGISTER OF DEEDS

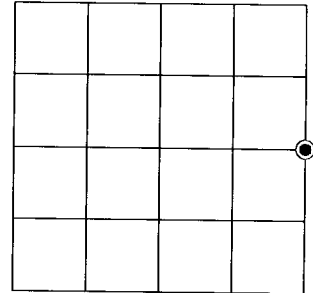
(a) CORNER LOCATION:

East Quarter Corner of Section 29
Township 39 North
Range 7 East
Town of Woodruff
County of Oneida

North:
East:
Datum:
GNSS Method:
GNSS Control:

(RECORDING AREA)

SECTION 29



(b) HISTORY OF ORIGINAL CORNER ESTABLISHMENT

Original Surveyor:
Date of Survey: Commenced
Completed
Original B.T.'S

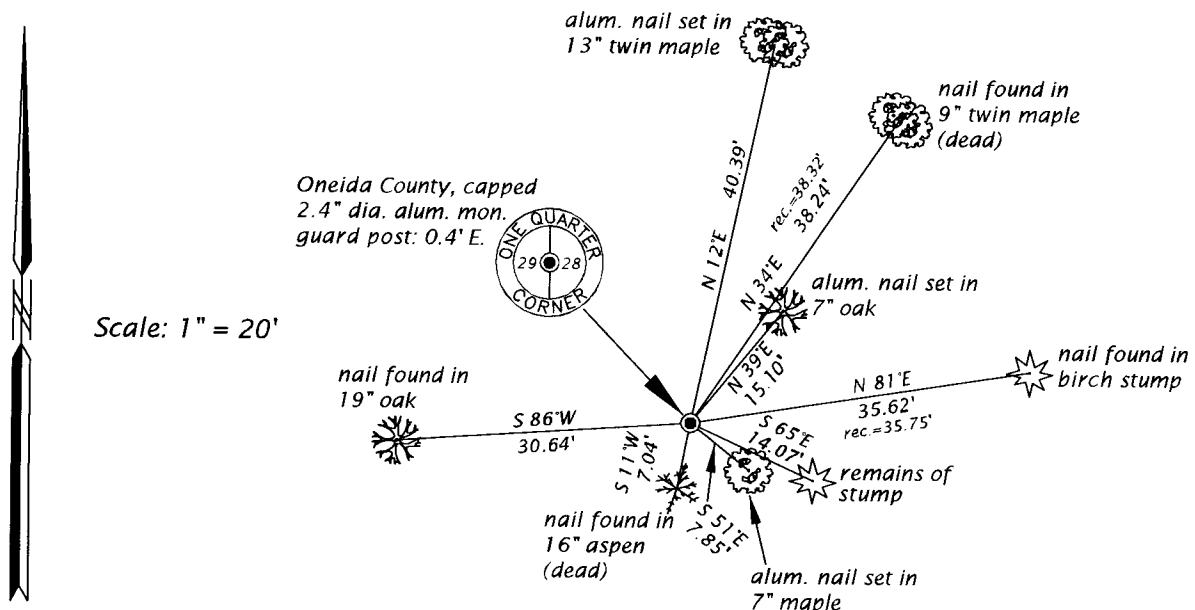
SEE PREVIOUS U.S.P.L.S. MONUMENT
RECORD DATED AUGUST 4, 1992.

(f)(g)(h) DESCRIPTION OF MONUMENT FOUND AT THIS CORNER AND IF IT WAS ACCEPTED, STATE ALL EVIDENCE (MATERIAL, TESTIMONIAL, OCCUPATIONAL, PLATS, RECORD, OTHER MONUMENTS) USED AS A BASIS FOR ESTABLISHING LOCATION. IF NOT ACCEPTED OR IF NOTHING WAS FOUND, STATE EVIDENCE USED AS BASIS FOR ESTABLISHING LOCATION. IF REESTABLISHED THROUGH LOST CORNER PROPORTIONATE METHODS, INDICATE ALL MONUMENTS, DISTANCES AND DIRECTIONS USED TO ESTABLISH. INDICATE TYPE OF MONUMENT AND SIGN POST FOUND OR SET.

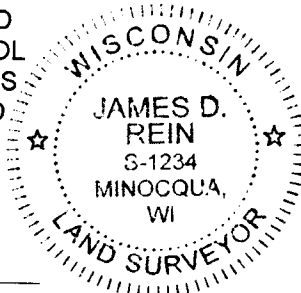
This is a perpetuation of a previous U.S.P.L.S. Monument Record by Milo Stefan, RLS, dated August 4, 1992, and filed in the office of the Oneida County Register of Deeds. A complete history of the corner can be found on the previous monument record. I accept the previous location as a true and faithful perpetuation or reestablishment of the original corner location and further perpetuate it as follows.

February 5, 2020, I, James D. Rein, P.L.S. No. S-1234, found and accepted the capped, aluminum monument set by Stefan in 1992. Some of Stefan's stumps are now gone and some of his bearing trees are now dead or stumps - see below for updated witnesses.

(c)(d)(e) PLAN VIEW OF CORNER WITH TIES TO AT LEAST 4 WITNESS MONUMENTS. IF IN DISAGREEMENT WITH PREVIOUSLY ESTABLISHED CORNER, SHOW THE DISTANCE BETWEEN THE TWO CORNERS AND ALSO INDICATE THE TIES TO THE DISPUTED CORNER.



(j) I, JAMES D. REIN, PROFESSIONAL LAND SURVEYOR NO. S-1234 HEREBY CERTIFY THAT THE CORNER LOCATION ON THIS RECORD WAS DETERMINED BY ME OR UNDER MY DIRECTION AND CONTROL AND THAT THIS U.S. PUBLIC LAND SURVEY MONUMENT RECORD IS CORRECT AND COMPLETE TO THE BEST OF MY KNOWLEDGE AND BELIEF.



James D. Rein 2/14/20
SIGNATURE DATE

INDEX NO. T-9
3907292000