

# U.S. PUBLIC LAND SURVEY MONUMENT RECORD

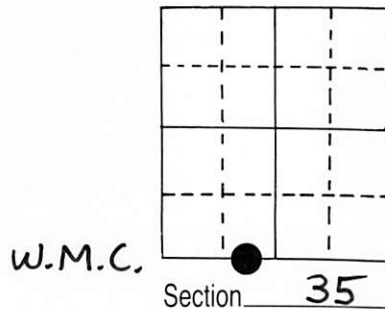
Note: This form is intended and designed to fulfill all requirements of Wisconsin Administrative Code, Chapter A-E 5.02, U.S. Public Land Survey Monument Record (3) (a) (b) (c) (d) (e) (f) (g) (h) (i). An additional sheet may be added if necessary to conform with said requirements.

(a) Corner location: Township 39 North

Range 7 East/~~West~~

Town/~~City/Village~~                      of Woodruff

County Oneida



2" iron pipe with D.N.R. brass cap ( in water)

Section 35

(b) (f) (g) (h) Description of monument found at this corner and if it was accepted, state all evidence (material, testimonial, occupational, plats, records, other monuments) used as a basis for accepting. If not accepted or if nothing was found, state evidence used as basis for establishing location. If reestablished through lost corner proportionate methods, indicate all monuments, distances and directions used to establish.

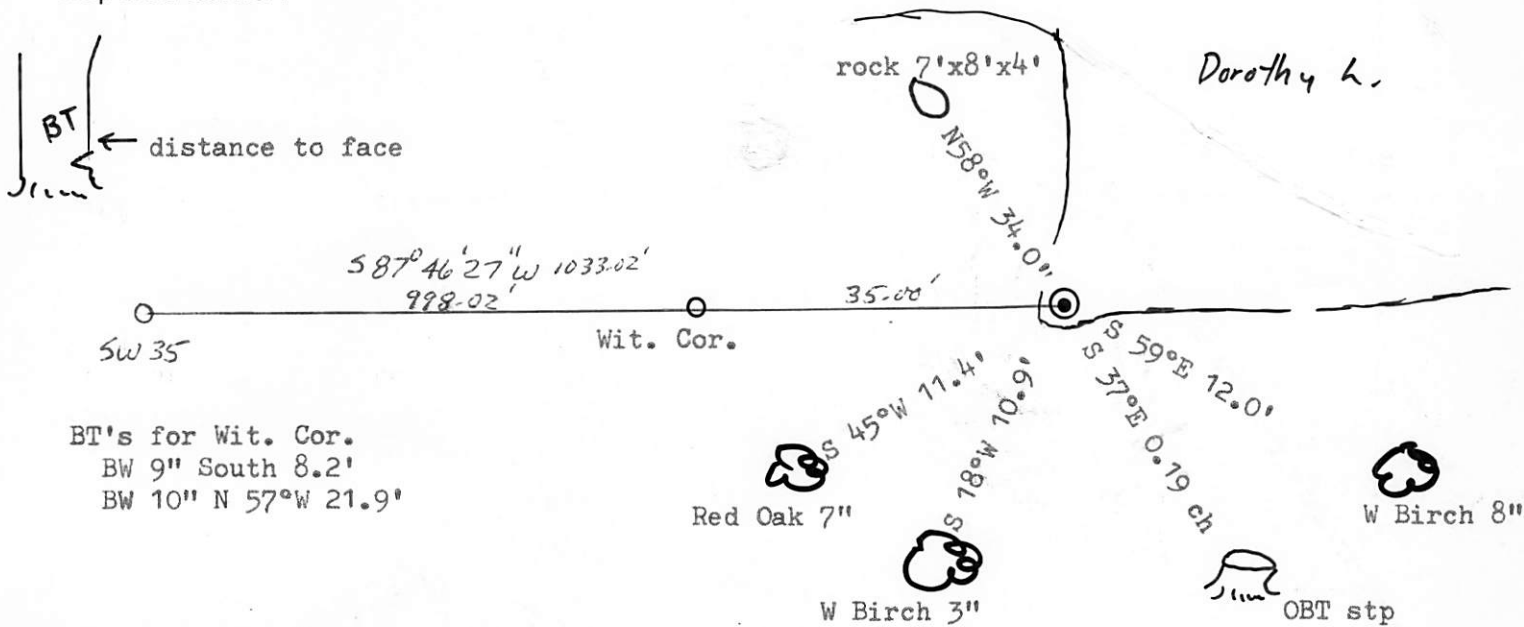
Original Alex Anderson Sept 1860. OBT's PY 16" S 37°E 19 lks, PY 24" S 9°W 33 lks

Hall , 1932, at 63.761 west of SE 32 & 15.675 east of SW 32 set 6x6 conc post.  
orig. stp S 37°E 0.19 ch

Ilg, 1965, found conc post, made BT's BW 8" S 59°E 0.182 ch, OR 7" S 45°W 0.172 ch  
& OBT stp S 37°E Rock 7'x8'x4' N 58°W 0.515 ch

Seymour & Copp on 10/26/77 found 6x6 conc post and replaced it with brass cap pipe.  
Both BT's & rock OK, new BT BW 3" S 18°W 10.9'  
Witness cor, D.N.R. brass cap, set on line to SW 32 at 35.00' west of M.C.

(c) (d) (e) Plan view of corner with ties to at least 4 witness monuments. If in disagreement with previously established corner, show the distances between the two corners and also indicate the ties to the disputed corner.



(i) I, Marvin E. Seymour  
(type or print name) certify that the corner location on this record was determined by me or under my direction and control and that this U.S. Public Land Survey Monument Record is correct and complete to the best of my knowledge and belief.

Marvin E. Seymour April 30, 1984  
Signature Date



39073500  
2-1984  
328

# U.S. PUBLIC LAND SURVEY MONUMENT RECORD

REGISTER OF DEEDS OFFICE  
ONEIDA COUNTY  
FILED

SEP 27 2021

Note: This form is intended and designed to fulfill all requirements of the Wisconsin Administrative Code, Chapter A-E 7.08 U.S. Public Land Monument Record (3)(a)(b)(c)(d)(e)(f)(g)(h)(i). An additional sheet may be added if necessary to conform with said requirements.

KYLE J. FRANSON  
REGISTER OF DEEDS

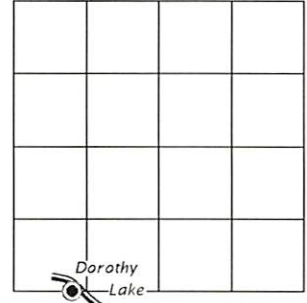
(a) CORNER LOCATION:

Meander Corner of Section 35  
Township 39 North  
Range 7 East  
Town of Woodruff  
County of Oneida

North:  
East:  
Datum:  
GNSS Method:  
GNSS Control:

(RECORDING AREA)

SECTION 35



(b) HISTORY OF ORIGINAL CORNER ESTABLISHMENT

Original Surveyor:  
Date of Survey: Commenced  
Completed  
Original B.T.'S

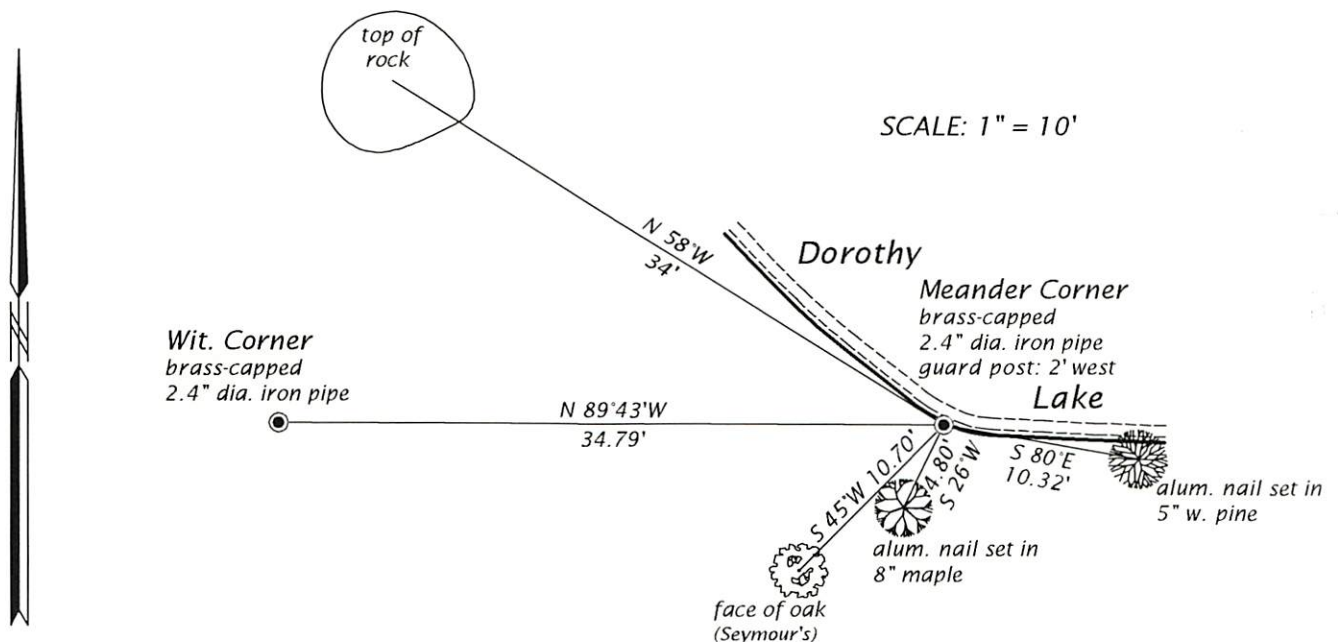
SEE PREVIOUS U.S.P.L.S. MONUMENT  
RECORD DATED APRIL 30, 1984.

(f)(g)(h) DESCRIPTION OF MONUMENT FOUND AT THIS CORNER AND IF IT WAS ACCEPTED, STATE ALL EVIDENCE (MATERIAL, TESTIMONIAL, OCCUPATIONAL, PLATS, RECORD, OTHER MONUMENTS) USED AS A BASIS FOR ESTABLISHING LOCATION. IF NOT ACCEPTED OR IF NOTHING WAS FOUND, STATE EVIDENCE USED AS BASIS FOR ESTABLISHING LOCATION. IF REESTABLISHED THROUGH LOST CORNER PROPORTIONATE METHODS, INDICATE ALL MONUMENTS, DISTANCES AND DIRECTIONS USED TO ESTABLISH. INDICATE TYPE OF MONUMENT AND SIGN POST FOUND OR SET.

This is a perpetuation of a previous U.S.P.L.S. Monument Record by Marvin E. Seymour, RLS, dated April 30, 1984, and filed in the office of the Oneida County Register of Deeds. A complete history of the corner can be found on the previous monument record. I accept the previous location as a true and faithful perpetuation or reestablishment of the original corner location and further perpetuate it as follows.

March 12, 2018, I, James D. Rein, P.L.S. No. S-1234, found and accepted the brass-capped iron pipe set by Seymour. Seymour's southeasterly and southwesterly birch witnesses are now gone or laid over - see below for updated witnesses.

(c)(d)(e) PLAN VIEW OF CORNER WITH TIES TO AT LEAST 4 WITNESS MONUMENTS. IF IN DISAGREEMENT WITH PREVIOUSLY ESTABLISHED CORNER, SHOW THE DISTANCE BETWEEN THE TWO CORNERS AND ALSO INDICATE THE TIES TO THE DISPUTED CORNER.



(i) I, JAMES D. REIN, PROFESSIONAL LAND SURVEYOR NO. S-1234 HEREBY CERTIFY THAT THE CORNER LOCATION ON THIS RECORD WAS DETERMINED BY ME OR UNDER MY DIRECTION AND CONTROL AND THAT THIS U.S. PUBLIC LAND SURVEY MONUMENT RECORD IS CORRECT AND COMPLETE TO THE BEST OF MY KNOWLEDGE AND BELIEF.

*James D. Rein*  
SIGNATURE

9-15-21  
DATE



INDEX NO. Z 17-18  
3907350032